

2020 CENSUS PROFILE

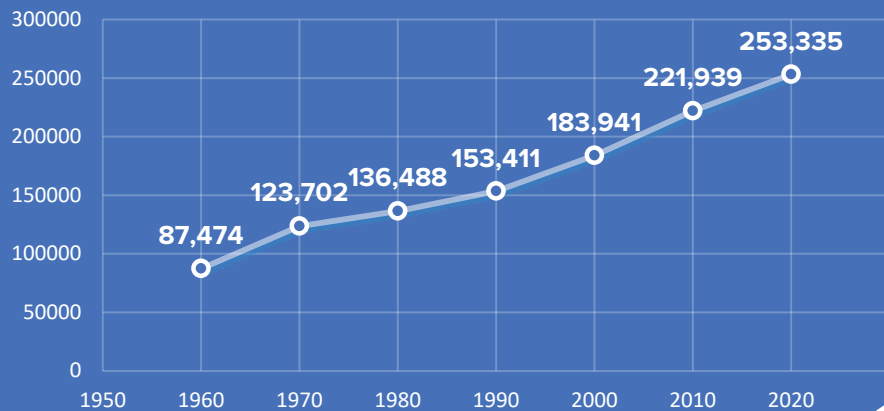
Clay County, Missouri

In 2020, Clay County, Missouri, was the third most populous county in the nine-county MARC Region with 253,335 persons. Representing more than 12% of the region's total residents, Clay County grew by nearly 20% from 2010, faster than any other county in the MARC region. Clay County has experienced strong growth since 1990.

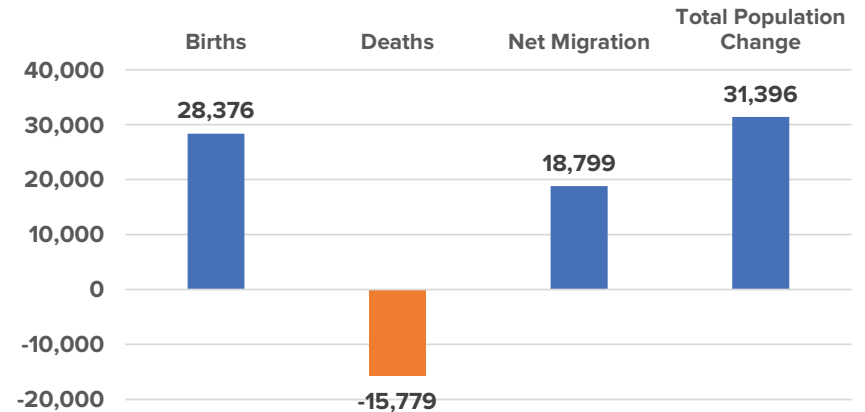
Clay County added 31,396 persons during the decade. This ranked third in the region and was due to both a natural increase (births over deaths) of 12,597 residents and a net in-migration of 18,799 persons. Population change by race and ethnicity mirrors the region's trend with most (79%) of the county's growth due to increases in persons of color. Persons of color saw their share of the county's population increase from approximately 16% in 2010 to 24% in 2020.

The largest increases in population by race and ethnicity were experienced by individuals identifying as two or more races, white alone, black alone, Hispanic, and Asian and Pacific Islander alone.

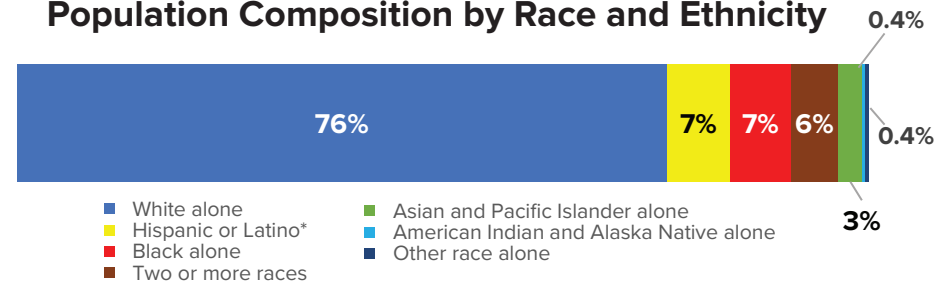
Clay County Total Population 1960 – 2020



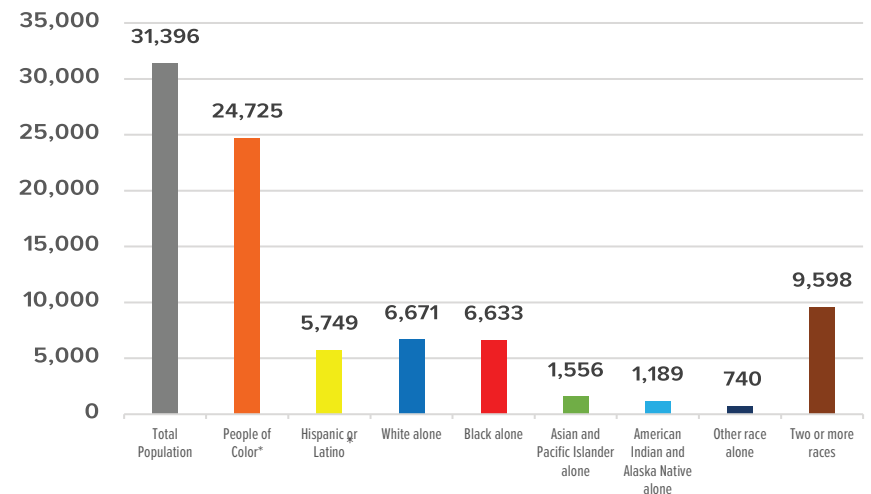
Components of Population Change, 2010–2020



Population Composition by Race and Ethnicity

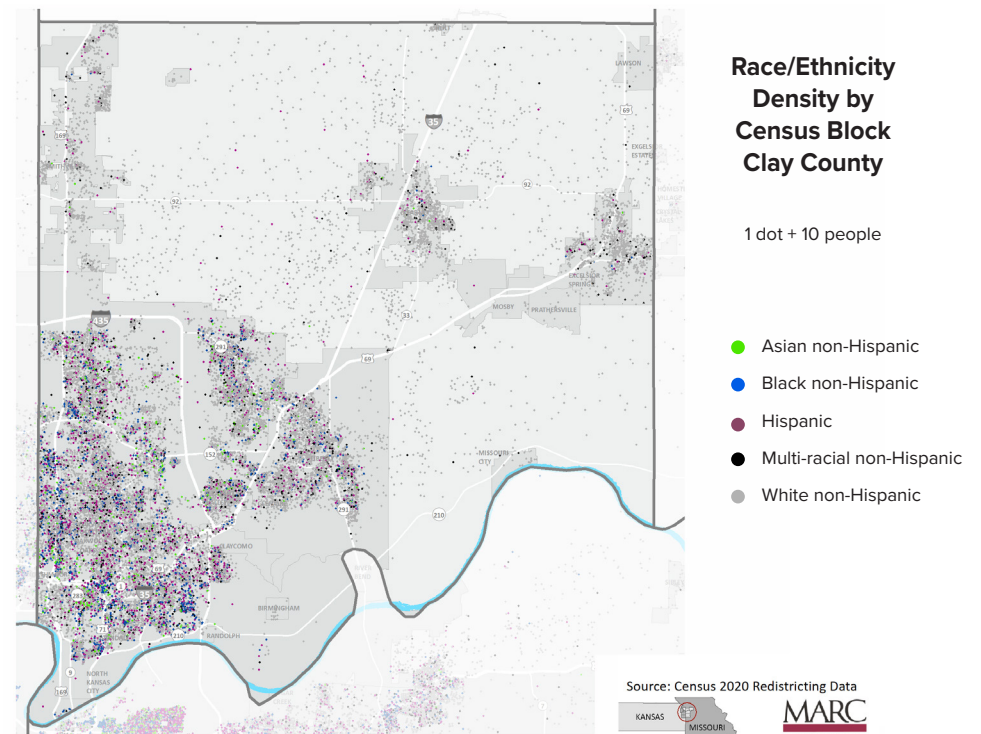
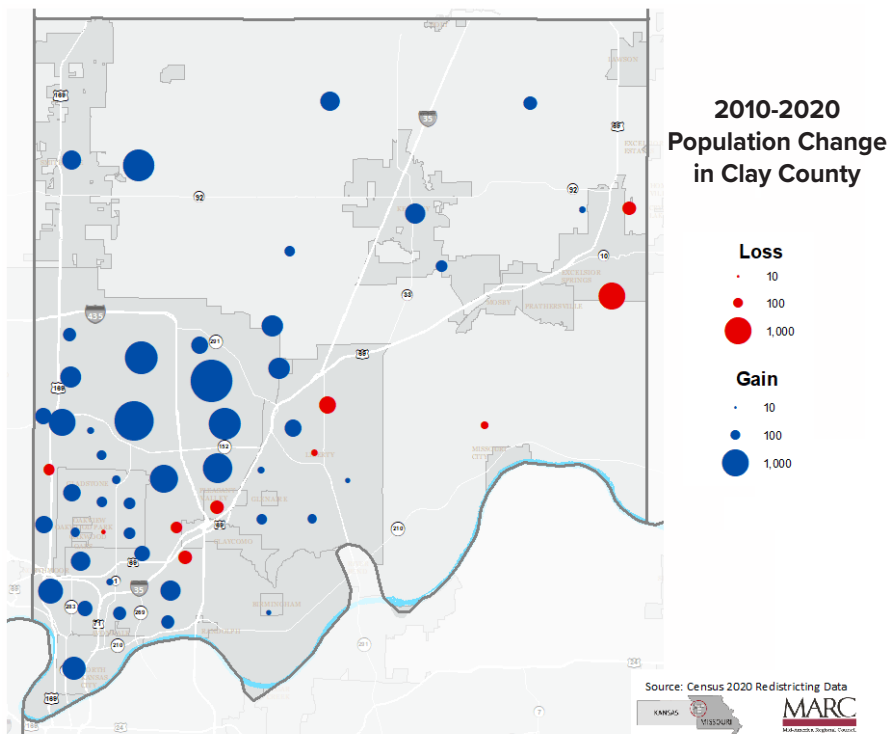


Population Change, 2010–2020



*Hispanic and Latino residents are included in their own category and have been subtracted from the other racial groups.

Clay County, Missouri Population, Race/Ethnicity	2010 Census Population	2020 Census Population	Change, 2010-2020	Percent Change, 2010-2020	Share of 2010	Share of 2020	Difference in Share, 2010-2020
Total Population	221,939	253,335	31,396	14%	100%	100%	0.0%
Hispanic or Latino (of any race)	13,101	18,850	5,749	44%	5.9%	7.4%	1.5%
Not Hispanic or Latino	208,838	234,485	25,647	12%	94.1%	92.6%	-1.5%
White alone	186,611	193,282	6,671	4%	84.1%	76.3%	-7.8%
Black alone	11,220	17,853	6,633	59%	5.1%	7.0%	2.0%
Asian and Pacific Islander alone	5,052	7,063	2,011	40%	2.3%	2.8%	0.5%
American Indian and Alaska Native alone	1,015	1,009	-6	-1%	0.5%	0.4%	-0.1%
Other race alone	272	1,012	740	272%	0.1%	0.4%	0.3%
Two or more races	4,668	14,266	9,598	206%	2.1%	5.6%	3.5%
People of Color*	35,328	60,053	24,725	70%	15.9%	23.7%	7.8%



* People of Color: Hispanic or Latino + Black alone + Asian and Pacific Islander alone + American Indian/Alaskan alone + Other race alone + Two or more races