

BNIM

ARCHITECTS

people. innovation.design.



Transforming Our Community by Design: This is our Defining Moment


Prepared by:

BNIM Architects for the Mid-America Regional Council

A Regional Framework

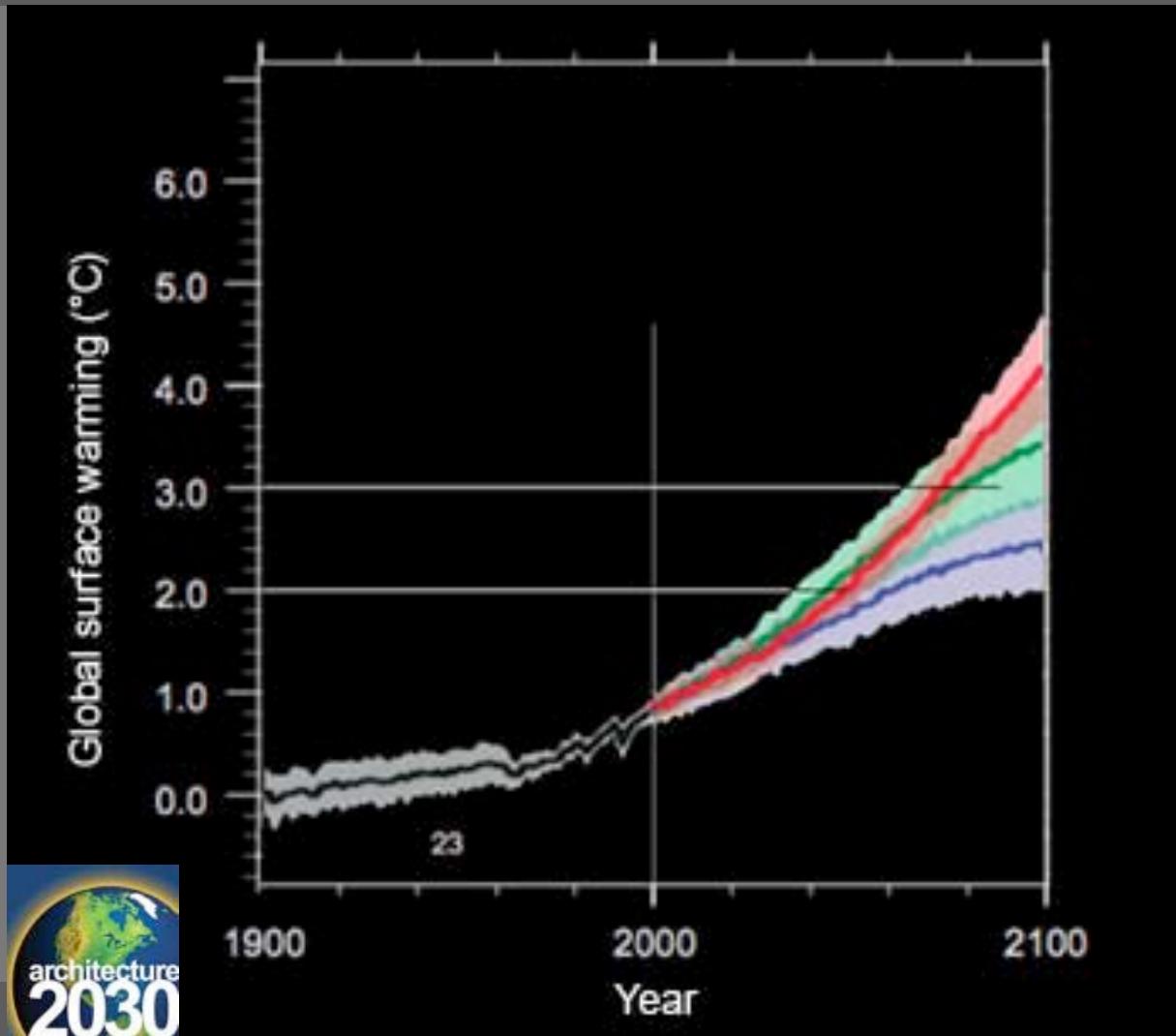
**“Want what you have.
Do what you can.
Be who you are.”**

**– Late Rev. Forest Church, All Soul’s Unitarian
Universalist Church in New York City, NY**

A photograph of a sunset or sunrise over a dark horizon. The sky is a gradient of blue, purple, and orange, with a bright sun partially obscured by the horizon. The bottom portion of the image is a solid black rectangle containing white text.

**Want what you have.
What do we have?
Enough. (of everything we need!)**

Want what you have. What do we have? Enough Time (just enough)



Global Warming

Currently, global warming is at 0.7°C above pre-industrial levels.

Scientists tell us that in order to avoid dangerous climate change we must keep global warming under 2°C above pre-industrial levels. If we reach 3°C, we could potentially cause catastrophic climate change.

Want what you have. What do we have? Enough Money.

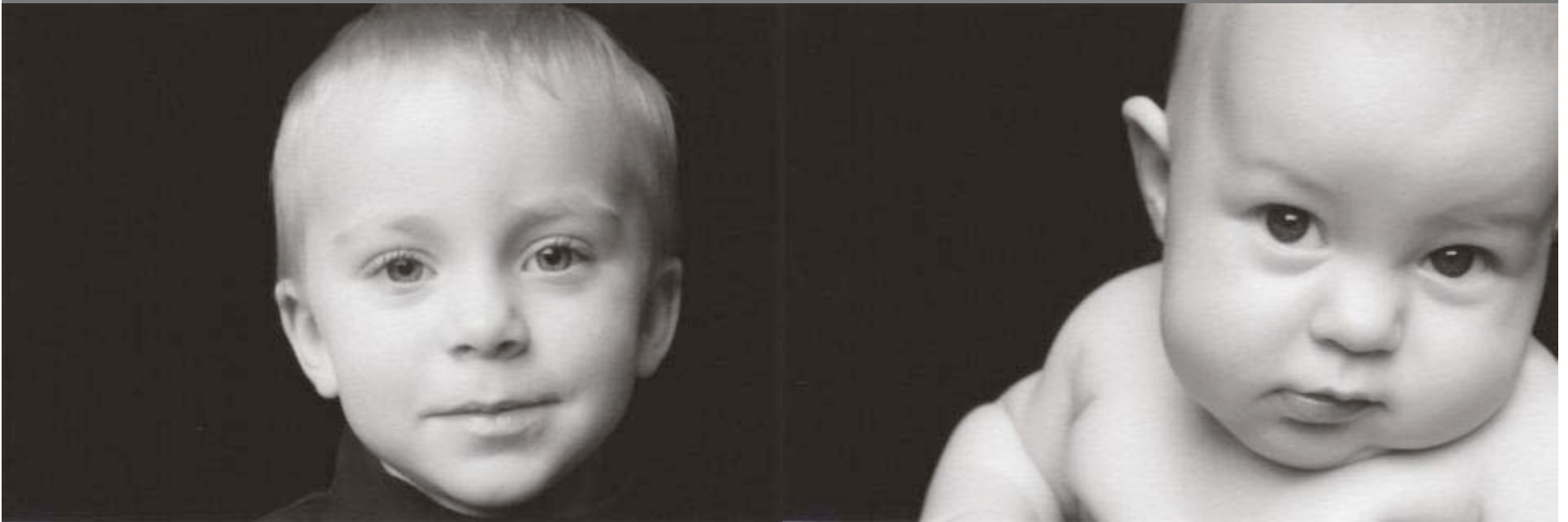


We have some money to invest, and that is why we are here today.

Who does that money belong to again?

Want what you have. What do we have? Enough Money.

I know who I will have to answer to for what all of us accomplish here today and in the coming year.



Want what you have. What do we have? Enough Money.



What did our Grandfather's tell us?

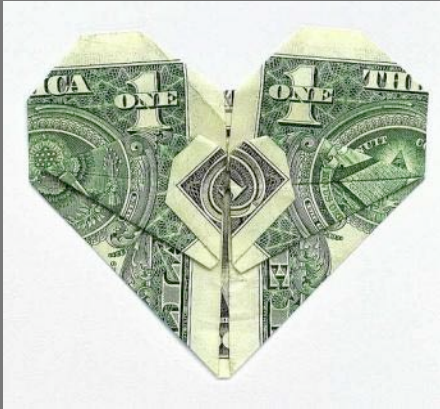
- “The fastest way to double your money is to fold it in half and put it back in your pocket.”
- “A penny saved is a penny you never have to earn.”

Order of operations:

- Take advantage of the ideas that are free
- Invest a little to save a lot
- Invest in things that will prove what is possible and inspire others to do the same
- Cooperate to do more with less
- Re-invest our savings to save more



Want what you have. What do we have? Enough Money.



How much does our community spend on:

- Petroleum?
- Coal?
- Natural Gas?
- Water treatment?
- Pollution clean-up?
- Un-health care?
- Unemployment?

Where does the money go?

What if we could keep these resources local and leverage them to build our internal capacity so that we never need the thing on this list in the future?



Want what you have. What do we have? Collective Will (Just enough)

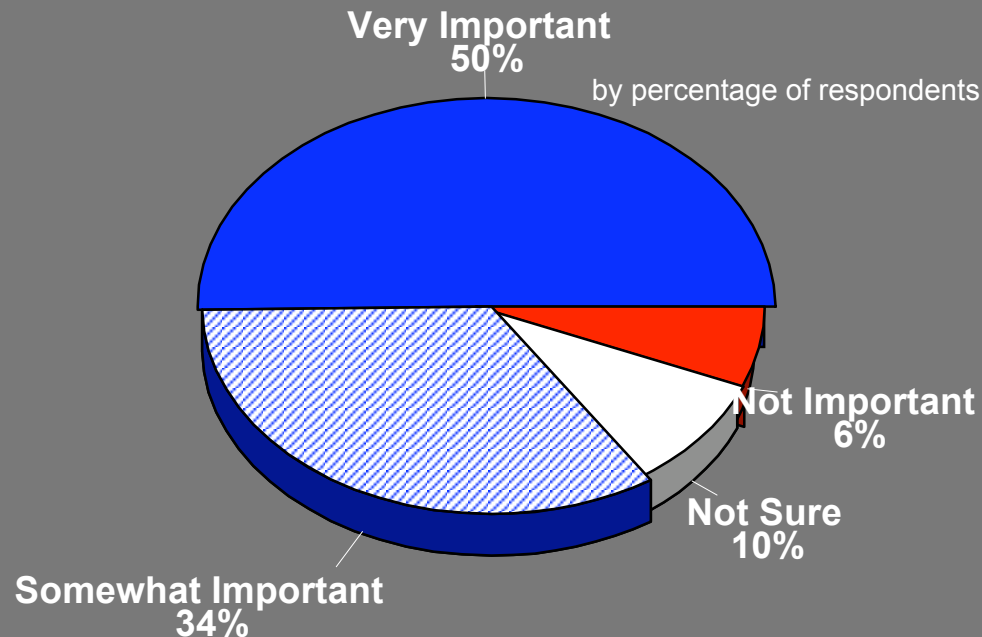
“The Will to do the Soul to dare.”

– Sir Walter Scott

Want what you have. What do we have? Will (Just Enough)

Downtown Area Plan 2008

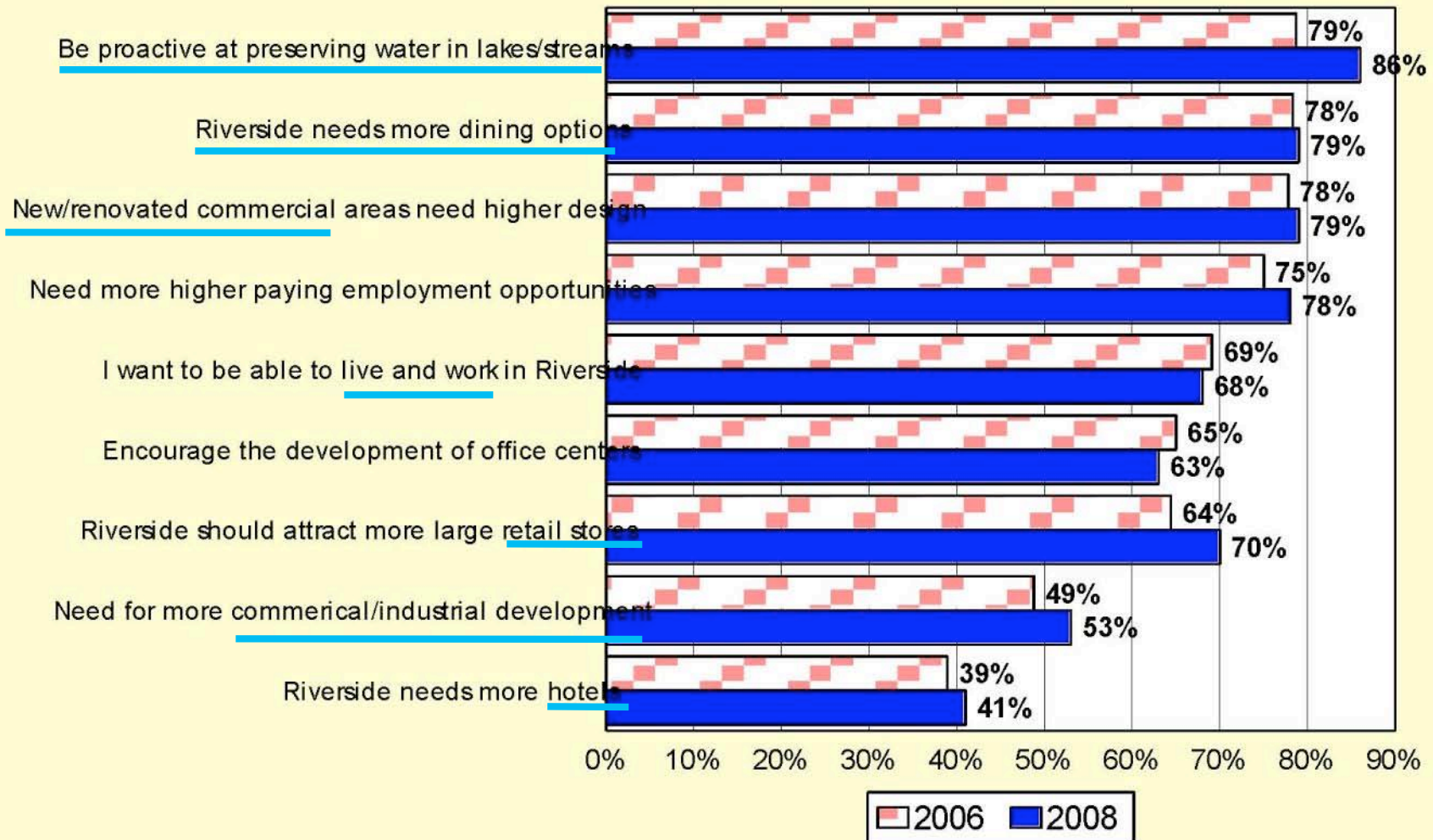
Q21. How Important is it to Establish Building Guidelines for Energy Efficiency and Environmental Performance for both New and Existing Development in the Greater Downtown Area?



Source: ETC Institute (August 2008 - Downtown Kansas City, MO -

Level of Agreement on Various Issues - 2008 vs 2006

by percentage of respondents who rated the item as a 4 or 5 on a 5-point scale



Trends

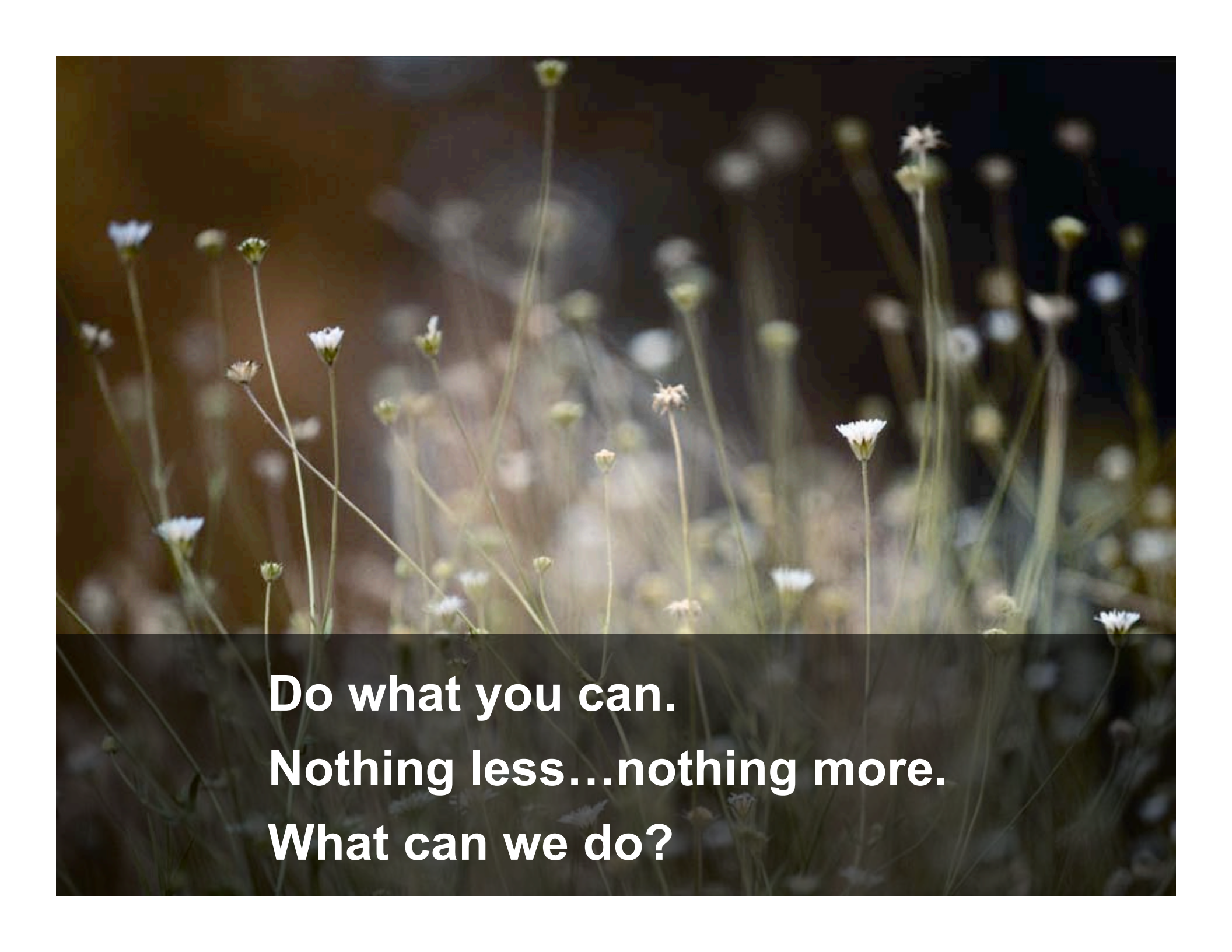
Source: ETC Institute DirectionFinder (2008 - Riverside, MO)

Want what you have. What do we have? Will (Just Enough)

MARC survey's in 2009 tell a different story

- Our region currently ranks sustainability issues in last place after a host of immediate economic concerns.
- As a nation, people who a couple of years ago believed climate change was the most urgent problem of our time have shifted back into denial that it is real.
- Is this a long term trend? Is this temporary amnesia? Is this simply denial in the face of economic exhaustion?
- If the current economic situation, or issue fatigue, or an overwhelming sense of peril is responsible for this shift...it is our job to stay the course and prove that these strategies will relieve our burdens and improve our collective wellbeing

Source: ETC Institute (August 2008 - Downtown Kansas City, MO -

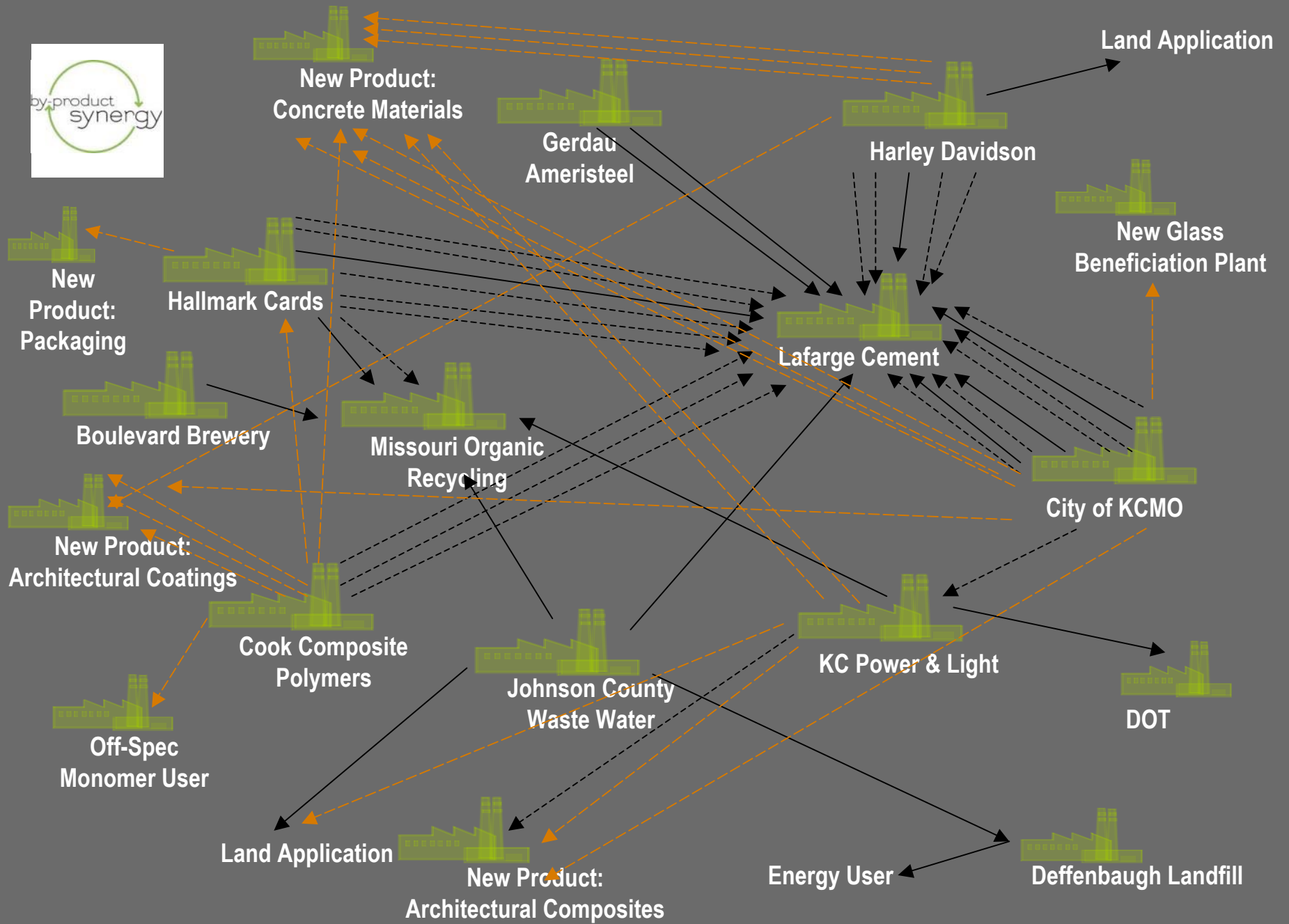
A photograph of a field of small white flowers with thin green stems, set against a dark, blurred background. The flowers are in various stages of bloom, some fully open and some as buds. The lighting is soft, highlighting the delicate structure of the plants.

**Do what you can.
Nothing less...nothing more.
What can we do?**

Do what you can. What can we do?

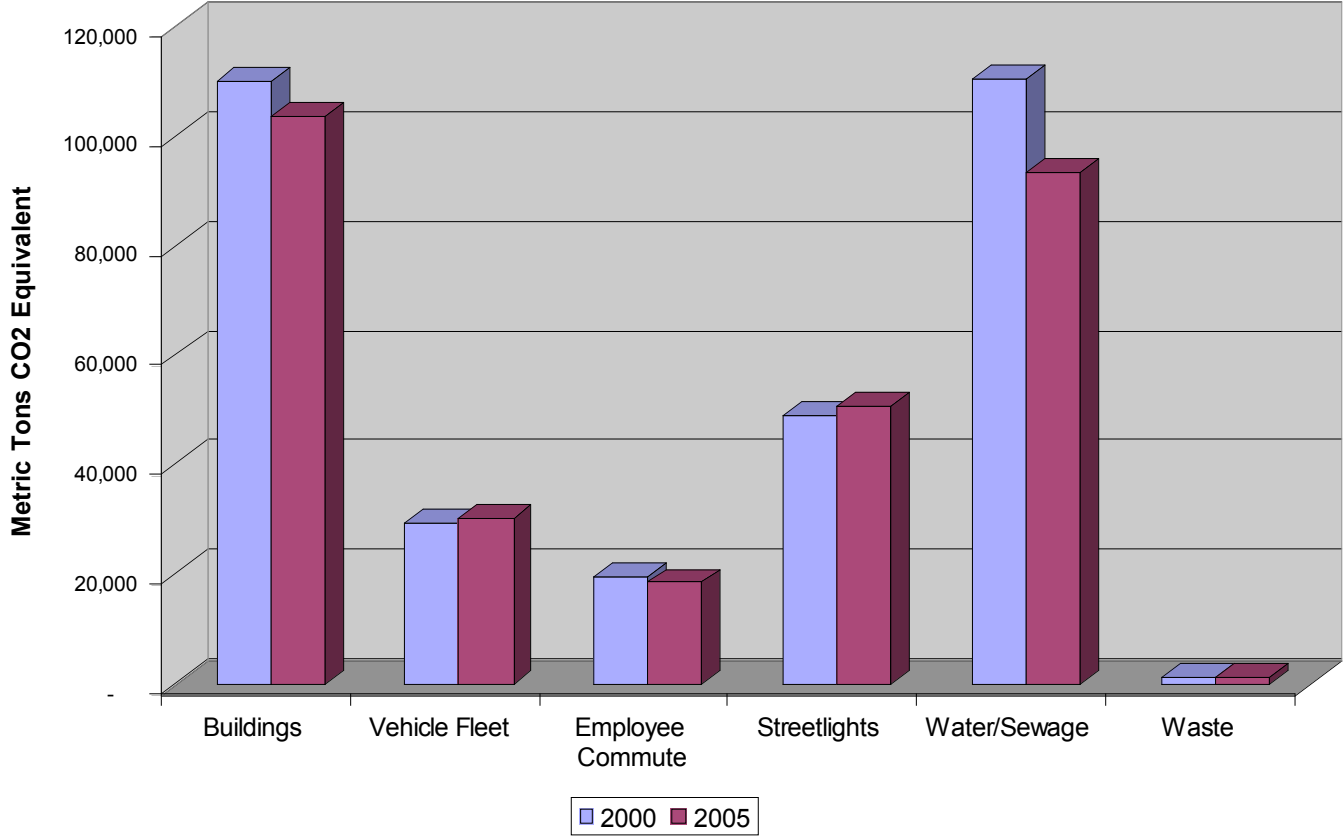
Do what you can - no more and no less :

- Pilot projects needed...make something work.
- Benchmarks needed...start measuring and recording.
- Policies, standards and toolkits needed...start cooperating
- Find synergies and partnerships
- Use the money we have wisely
- Leverage the capital we export to become more resilient here and now



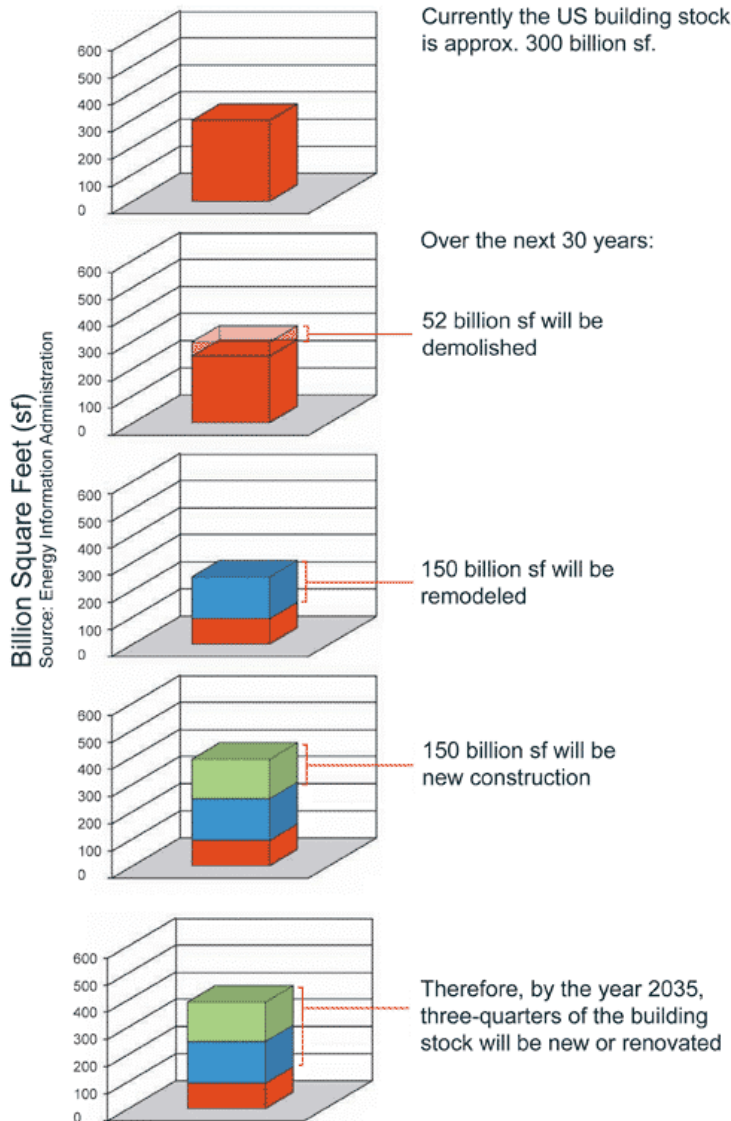
KCMO – Emissions by Source – Government Activities

**Greenhouse Gas Emissions by Source
from City of Kansas City Government Activities**



Source: Kansas City Climate Protection Plan 2007

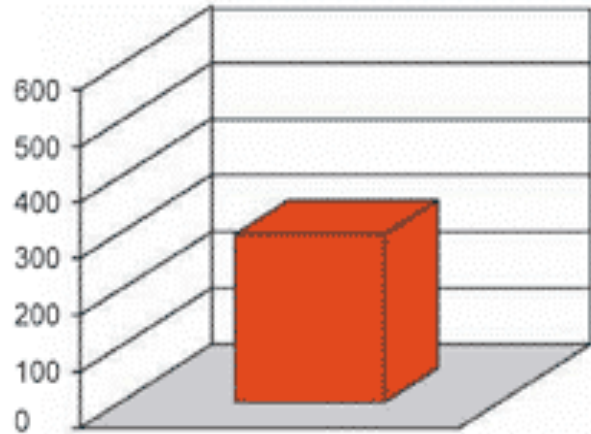
Do what you can. What can we do? Fix existing buildings!



- The total US building stock equals approximately 300 billion square feet.
- In the US every year, we tear down approximately 1.75 billion square feet of buildings.
- Every year, we renovate approximately 5 billion square feet.
- Every year, we build new approximately 5 billion square feet.
- Herein lies the hope. By the year 2035, approximately **three-quarters** (75%) of the built environment will be either new or renovated.
- This transformation over the next 30 years represents a historic opportunity for the architecture and building community to avoid dangerous climate change.



Do what you can. What can we do? Fix existing buildings!



- The total US building stock equals approximately 300 billion square feet.
- Every year, we build new approximately 5 billion square feet.
- We would have to build all 5 billion square feet to be 60% more energy efficient in order to equal a 1% improvement in the 300 billion square feet of existing buildings
- Fixing existing buildings!



Do what you can. What can we do? Demonstrate what is possible.



Manheim:

- Urban Renewal Area (BCCP)
- ARRA-Neighborhood Stabilization
- ARRA-CDBG
- ARRA-Justice Assistance
- ARRA-Job Training
- ARRA-Weatherization

- \$27 Million BRT on Troost (KCATA)

-AARA-KCHA Greening
Brush Creek Towers

- Plaza East TIF
- Brush Creek TIF
- \$375,000 Climate Center Planning Grant (EDA/Parks)
- Innovation Center (Civic Council)
- \$8 Million Troost Bridge (MARC)
- \$5 Million Troost Bridge (MoDOT)

- \$475,000 Beautification Brush Creek at Troost
- \$980,000 Beautification Cleaver, II and Troost

- Greening of Paseo High (Summer 2009)
- Greening of KC Middle for Arts (Summer 2009)

- Underway or Planned Now
- Potential Additional Stimulus Funding

Potential Federal Stimulus Funding



Ivenhoe:

- 39th and Paseo TIF
- 31st and Baltimore TIF
- 2nd Chance-Crime Commission
- Neighborhood Safety Program
- ARRA-Neighborhood Stabilization
- ARRA-CDBG
- ARRA-Justice Assistance
- ARRA-Job Training
- ARRA-Weatherization

-GreenWorks campus to
Brush Creek Community Center

Blue Hills:

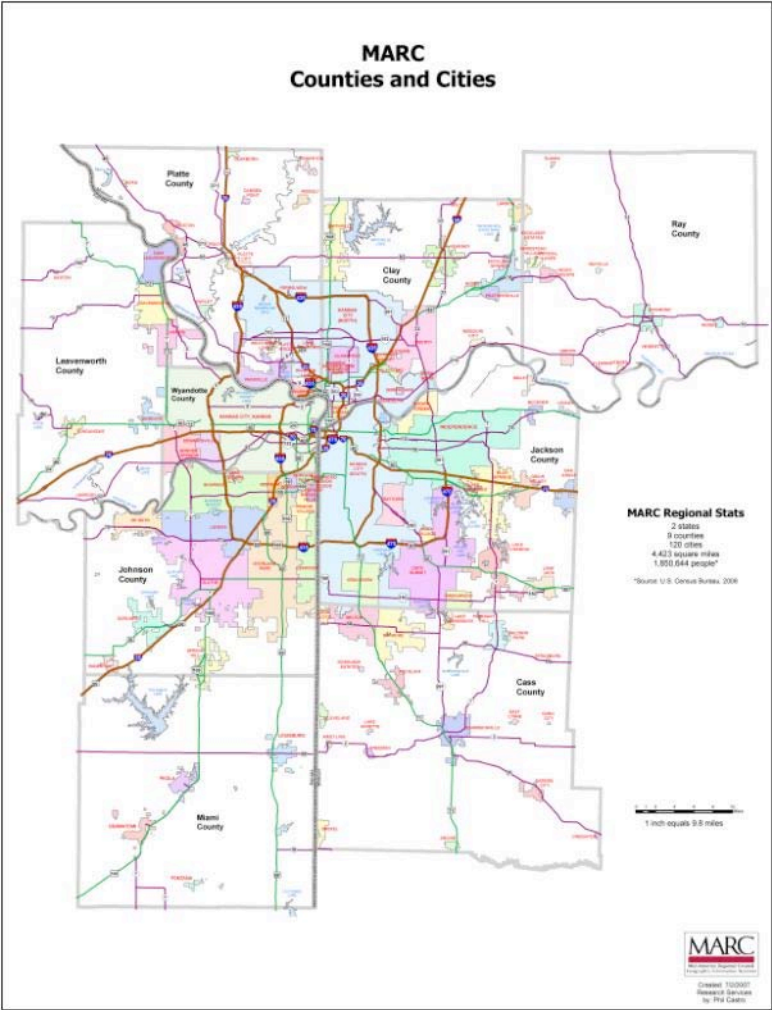
- 31st and Baltimore TIF
- Olive Street Homes-Energy Star
- Wabash Village-Energy Star (plan)
- Neighborhood Safety Program
- ARRA-Neighborhood Stabilization
- ARRA-CDBG
- ARRA-Justice Assistance
- ARRA-Job Training
- ARRA-Weatherization

-Reviving Baseball in the Inner City (RBI) - Satchel Paige Stadium (Parks)



**Be who you are.
Who are we?**

Be who you are. Who are we? Neighbors.



Be who you are. Who are we? We share the same rain.



Be who you are. Who are we? We share the same rain.

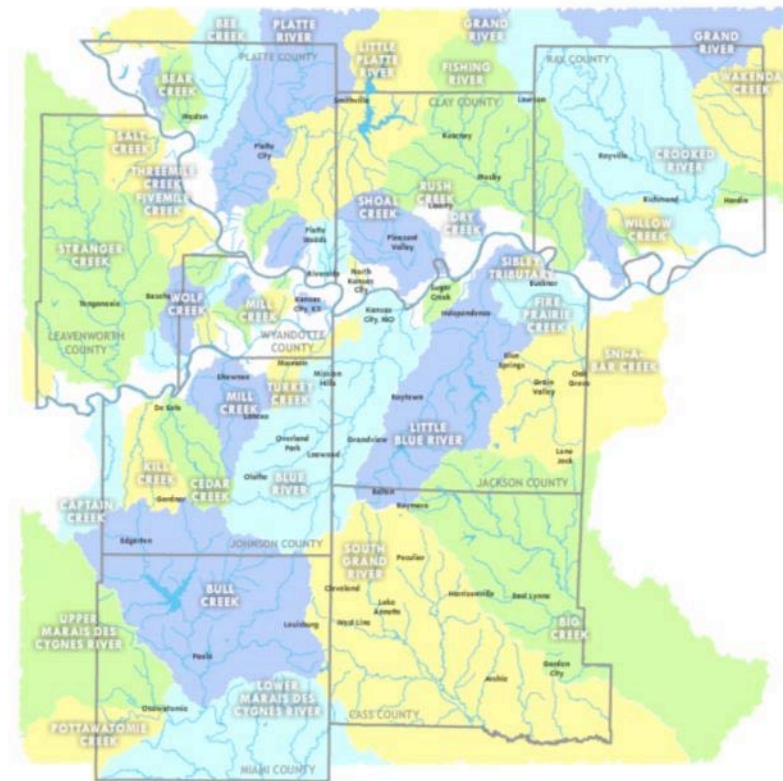
Watersheds of the Kansas City Region

what's a watershed? | watershed list | metrogreen® | what you can do

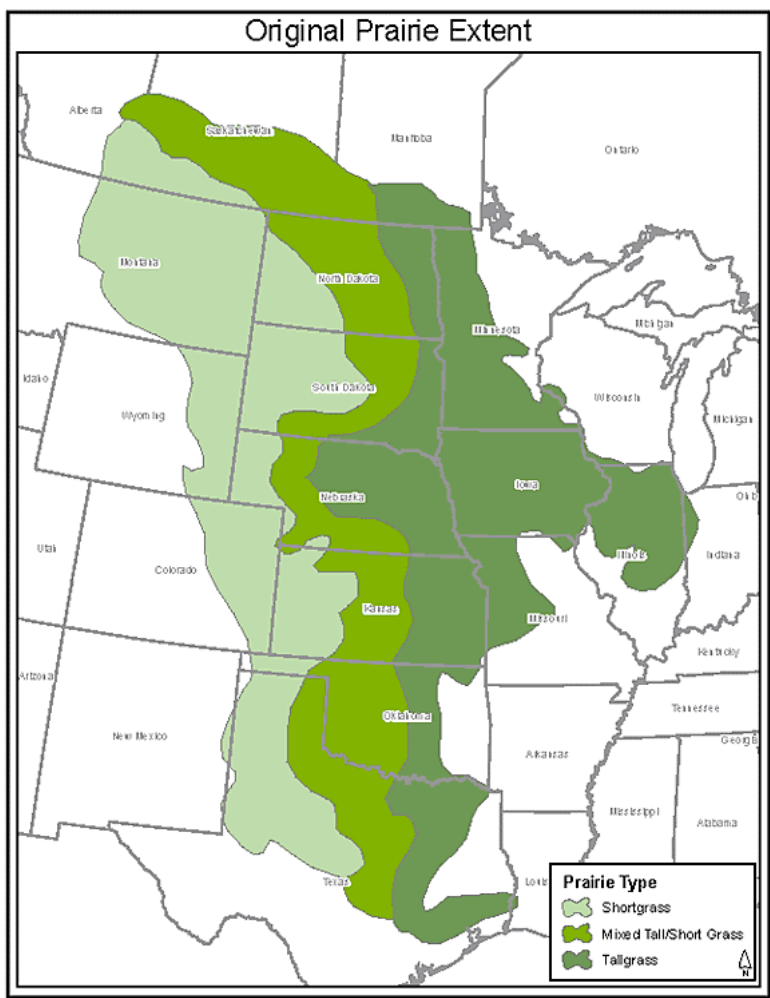
Which watershed do you live in?

Enter your address:

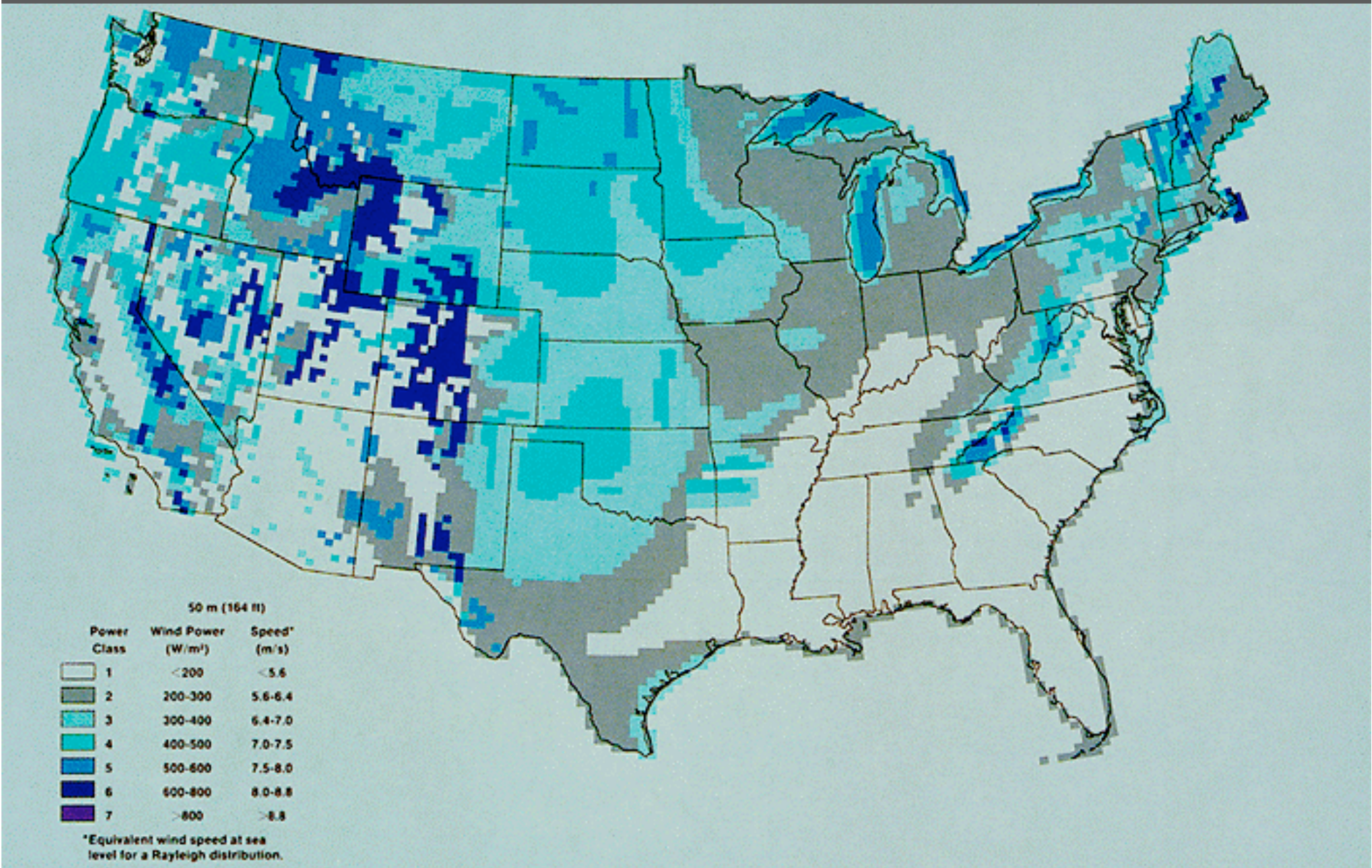
find my watershed



Be who you are. Who are we? We share the same sun.



Be who you are. Who are we? We share the same gentle breeze.



Be who you are. Who are we? We share the same resources.

On the Map:

Conservation Planning for the Kansas City Region

The Mid-America Regional Council and partners inventoried valuable natural resource assets and ecological features in the Kansas City region. The results, shown on this map, provide a framework for area conservation plans and policies.



Grassland

Native prairie and replanted native plants



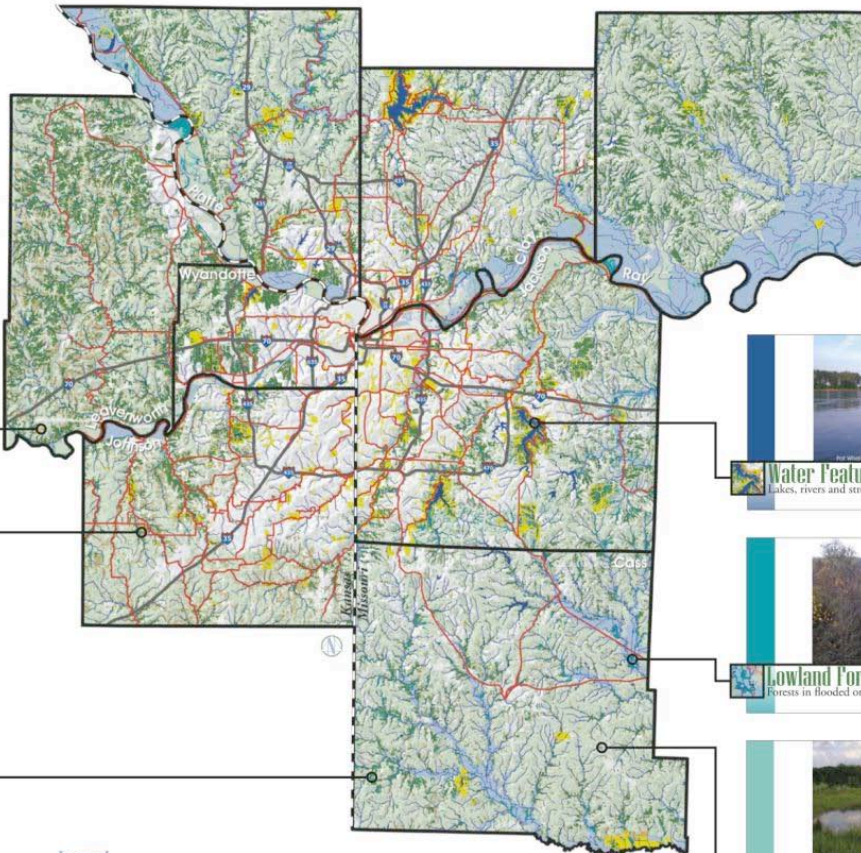
Woodlands

Immature deciduous trees, often growing on former prairie or savanna



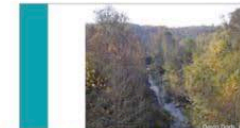
Forests

More mature forests, includes some junipers and former savanna



Water Features

Lakes, rivers and streams



Lowland Forests

Forests in flooded or wetland areas



Wetlands

Known wetlands and hydric soils

Legend:

- County Boundaries
- Interstate Highways
- State Line
- Metropolitan Trails
- Parks

- 100-Year Flood Plain
- Developed Land
Commercial, industrial, and residential land, includes urban forests
- Undeveloped Land
Cropland, pasture, non-native grasslands, and unclassified land

Data represented on this map were derived from multiple sources, and MARC makes no guarantee regarding the accuracy or currency of any data shown. This map is intended for regional-scale planning only. Data should be ground-verified for site planning or any other applications using a scale greater than 1:100,000. Flood plain data are incomplete, and not displayed for Lawrence or Wyandotte counties. Data developed for the Natural Resource Inventory include additional land cover classifications and data layers. Please refer to the Natural Resource Inventory Technical Report for more information: www.marc.org/ncr.



Be who you are

Be who you really are...it is enough.

- We come from different neighborhoods, but we are all neighbors
- We all share the same rain, sun and wind
- We all have people to shelter, business to be done, roadways to fix, stormwater to infiltrate, and wastewater to treat
- We all consume...we all waste
- We all want what is best for our children
- We all share a fierce Midwestern drive to compete and be the best at....

A Regional Framework

**“Want what you have.
Do what you can.
Be who you are.”**

**– Late Rev. Forest Church, All Soul’s Unitarian
Universalist Church in New York City, NY**



Transforming Our Community by Design: This is our Defining Moment | [BNIM Architects](#) | [people. innovation. design.](#)

Small Group Work: What do we want to do and be?

E: Energy Efficiency

C: Energy Conservation

R: Renewable Energy

- List strategies /policies/ projects in development or under consideration (10 minutes)
- Brainstorm potential projects (15 minutes)
- Refine / categorize into actionable, measureable projects (25 minutes)
- Prioritize the list (10 minutes)
- Share (5 minutes each group)
- Large group dialog: Where are there synergies?

May 14th 2010 and beyond

Two potential categorization strategies

- By type of project
 - Policy
 - planning/design
 - Operations & Maintenance
 - Education
 - Finance
- By type of opportunity/impact
 - Local government or policies needed
 - Business & economic development opportunities
 - Opportunities for integration with other sustainability goals

May 14th 2010 and beyond

Develop & Refine Priority Projects

- Highlight the priorities and keep track of all ideas for future consideration in a report following today's session
- Participants on May 14th will self select around the priority projects they are most passionate about to:
 - Uncover the barriers to implementation
 - Determine the tools needed to overcome the barriers
 - Define potential synergies and partnerships
 - Develop action plans
 - Assign metrics and indicators of success
- Throughout the year teams will work to implement the strategies / polices/ tools / projects