

BRIGHT FUTURES



BRIGHT FUTURES

Meeting Goal

- To begin building consensus on a regional framework that supports local government actions to meet regional energy efficiency, energy conservation (EEC) and renewable energy goals



BRIGHT FUTURES

Regional Sustainability Initiatives

- Sustainability Vision (MARC Board)
- Long Range Transportation Plan Principles
- Clean Air Action Plan
- Metro Green
- Smart Moves



BRIGHT FUTURES

Regional Sustainability Initiatives

- 30% reduction in GHG by 2020 (KCMO)
- 60 – 70ppb ground level ozone (EPA)
- 80% waste diversion by 2023 (MARC)
- 300 MW energy efficiency (KCPL)
- 88% capture sewer overflows (KCMO)
- 1,144 greenway miles (MARC)
- Regional transit system (MARC)



BRIGHT FUTURES

EEC Strategic Framework

Developed by area jurisdictions in 2009

- Lead by example
- Policy and planning
- Education
- Sustainability linkages
- Leverage
- Partnerships
- Assessment and monitoring



BRIGHT FUTURES

EEC Strategic Framework Sponsoring Jurisdictions

- City of Kansas City, MO
- City of Blue Springs, MO
- City of Independence, MO
- City of Lee's Summit, MO
- City of Lenexa, KS
- City of Olathe, KS
- City of Shawnee, KS
- Johnson County, KS
- Jackson County, MO
- Unified Government
- Clay County, MO



BRIGHT FUTURES

What local tools might comprise a flexible regional EEC framework?

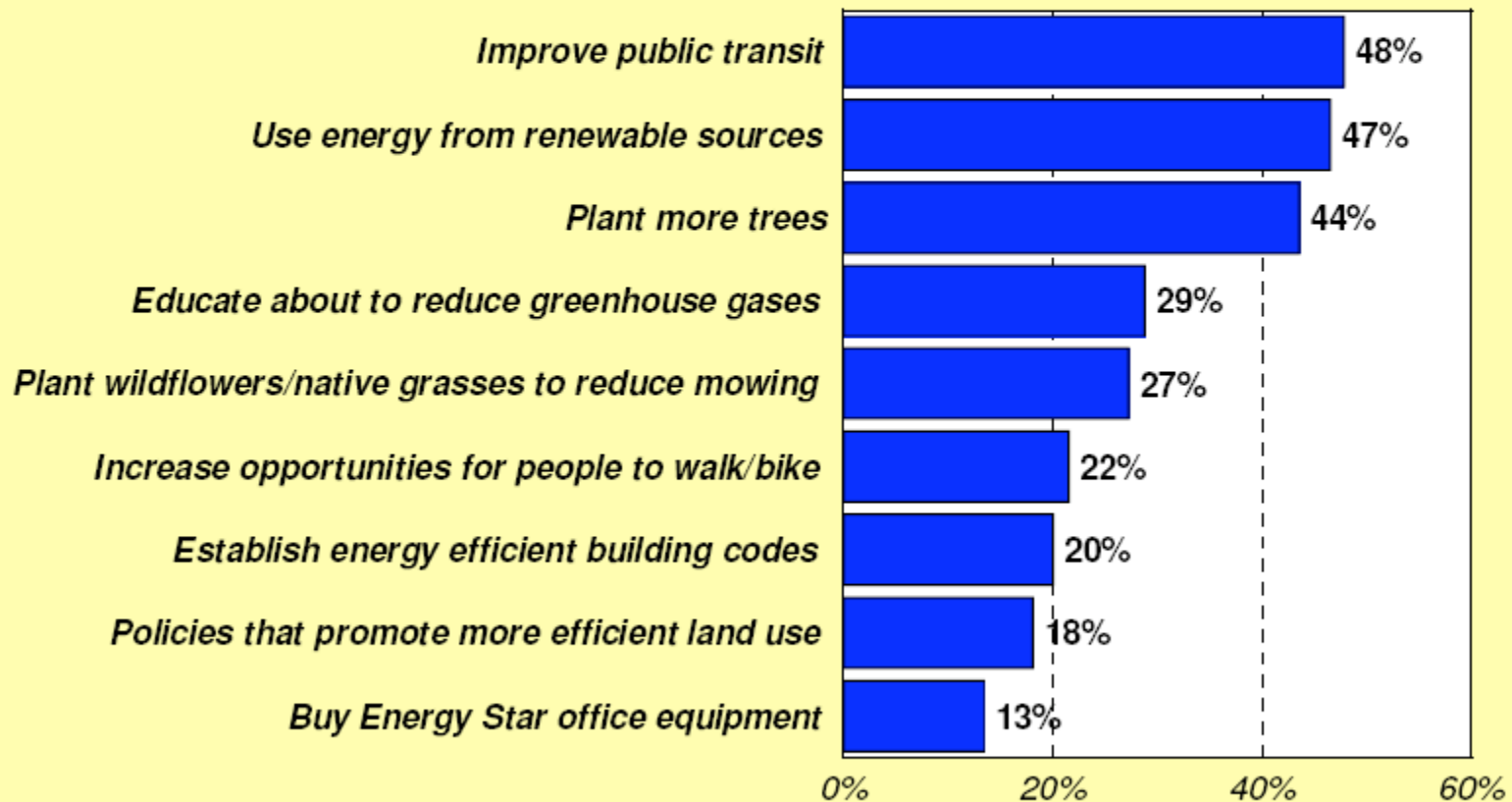
- Model ordinances
- Incentives
- Planning guidelines
- Codes, regulations, standards
- Engineering design (streets, parking lots, water resource management, lighting)
- Natural resource management
- O&M practices



BRIGHT FUTURES

Q20a: Which of the following do you think should be the top strategies your municipal or county government should use to reduce greenhouse gas emissions?

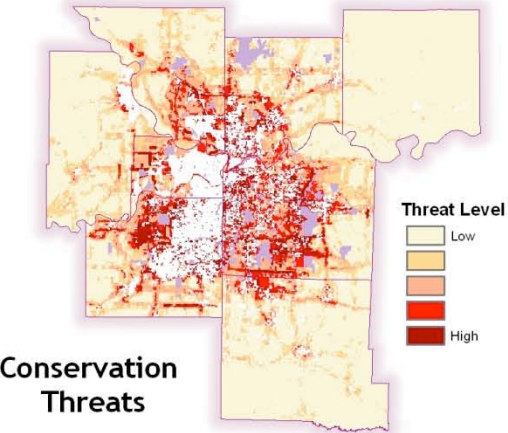
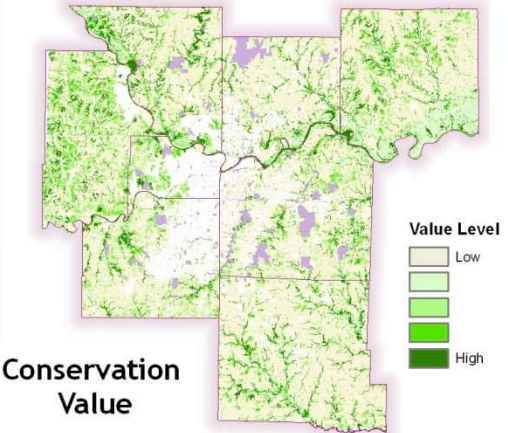
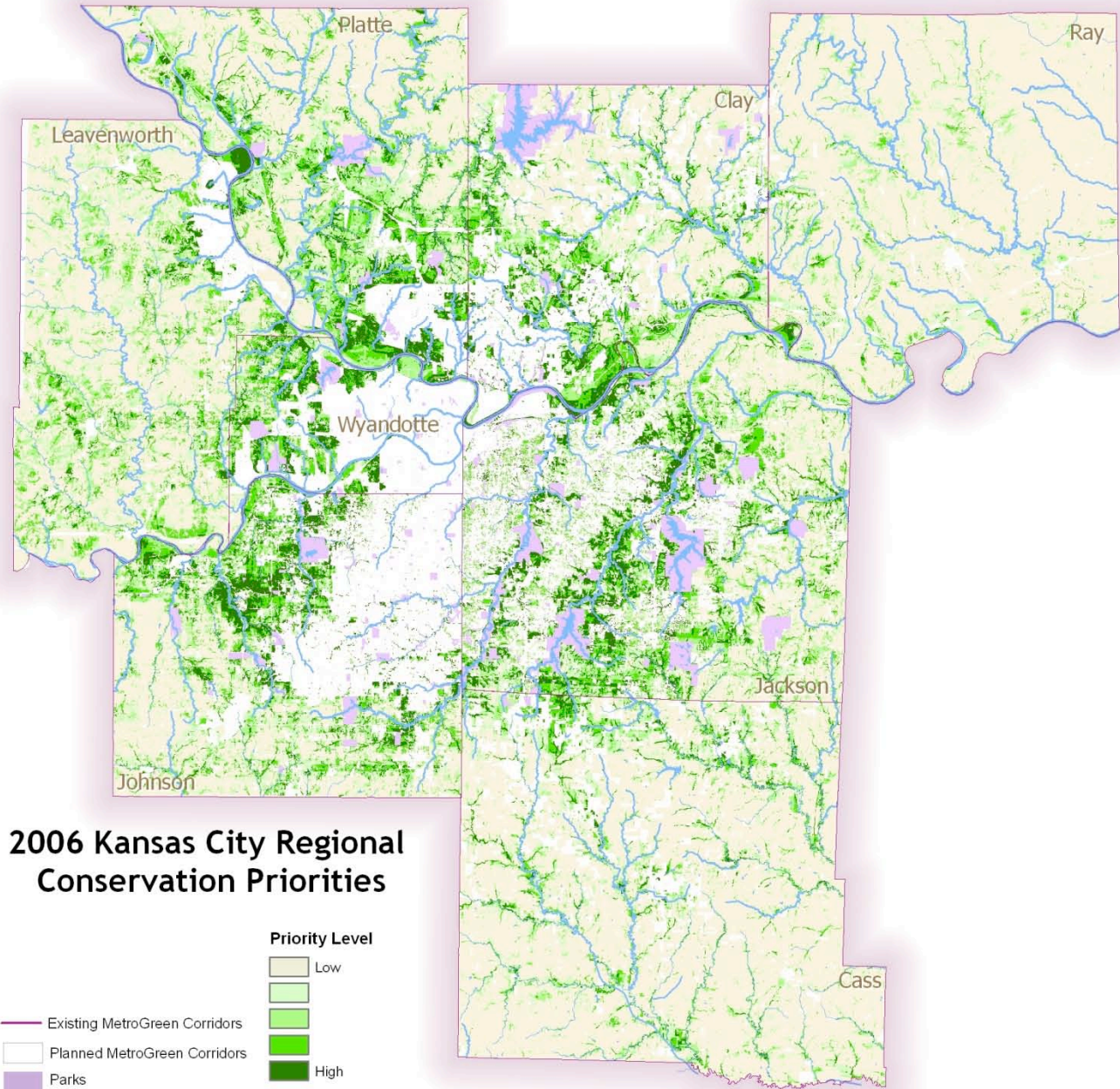
By Percentage of Respondents



Sources: ETC Institute Survey (Fall 2009)



2006 Kansas City Regional Conservation Priorities



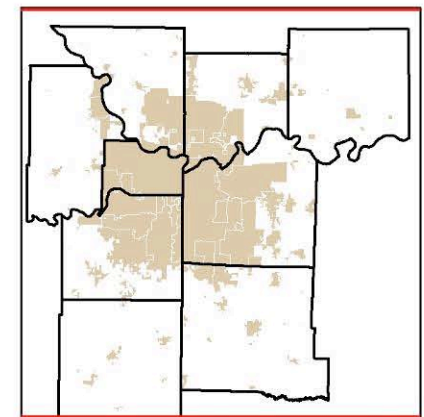
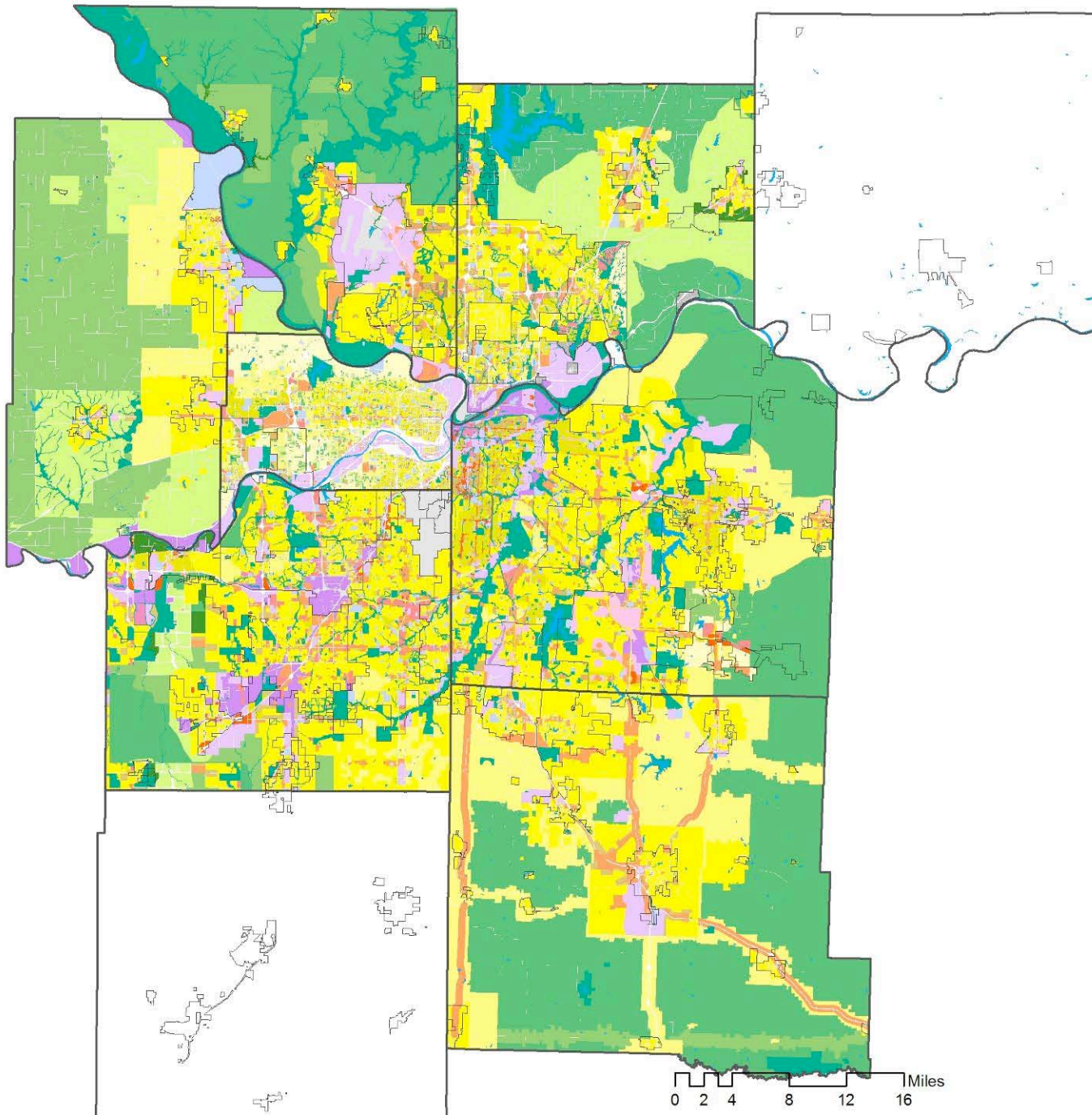
Future Land Use

DRAFT January 2008.
 Land use data is from city and county plans and 2005 appraiser's data. All recent future land use data changes may not be included. MARC has converted all local land use types to a common set of classes.

Legend

Future Land Use Type

- Agriculture/Vacant
- Rural Policy Area - .1 Units per Acre (UPA)
- Rural Residential - .2 UPA
- Urban Fringe - .5 UPA
- Residential SF Large Lot - 1 UPA
- Residential SF Very Low - 1.5 UPA
- Residential SF Low - 2.5 UPA
- Residential SF Medium - 5 UPA
- Residential MF Low - 8 UPA
- Residential MF Low-Med - 12 UPA
- Residential MF Medium - 15 UPA
- Residential MF High - 20 UPA
- Residential MF Very High - 30 UPA
- Protected/Parks
- Public/Semipublic (Low) - .22 Floor Area Ratio (FAR)
- Public/Semipublic (High) - .3 Floor Area Ratio (FAR)
- Commercial (Low) - .2 FAR
- Commercial (High) - .3 FAR
- Office (Low) - .25 FAR
- Office (Medium) - .275 FAR
- Mixed Use (Low) - .17 FAR
- Mixed Use (High) - .65 FAR
- Industrial/Bus. Park (Low) - .2 FAR
- Industrial/Bus. Park (High) - .24 FAR



BRIGHT FUTURES

Thoughts on change and leadership

- Change through ... policy, education, creativity, persistence, vision, networks
- How can we be more collaborative? integrative? restorative?
- Leadership is key – and it's everywhere!
- In the face of ARRA, can we be both pragmatic and wise?



BRIGHT FUTURES

Today's Agenda

- Introductions
- Presentations: National/local trends
- Small group discussion
- Small group presentations
- Full group review

