

Linking Environmental and Transportation Planning



Lee Ann Kell – District Planning Manager
Gayle Unruh – Environmental and Historic
Preservation Manager

MARC
November 24, 2008



Environmentally Responsible

- ◆ Facilities and Employees
- ◆ Maintenance and Operation
- ◆ Construction



Trees for Tomorrow

STRETCH YOUR **POWER**



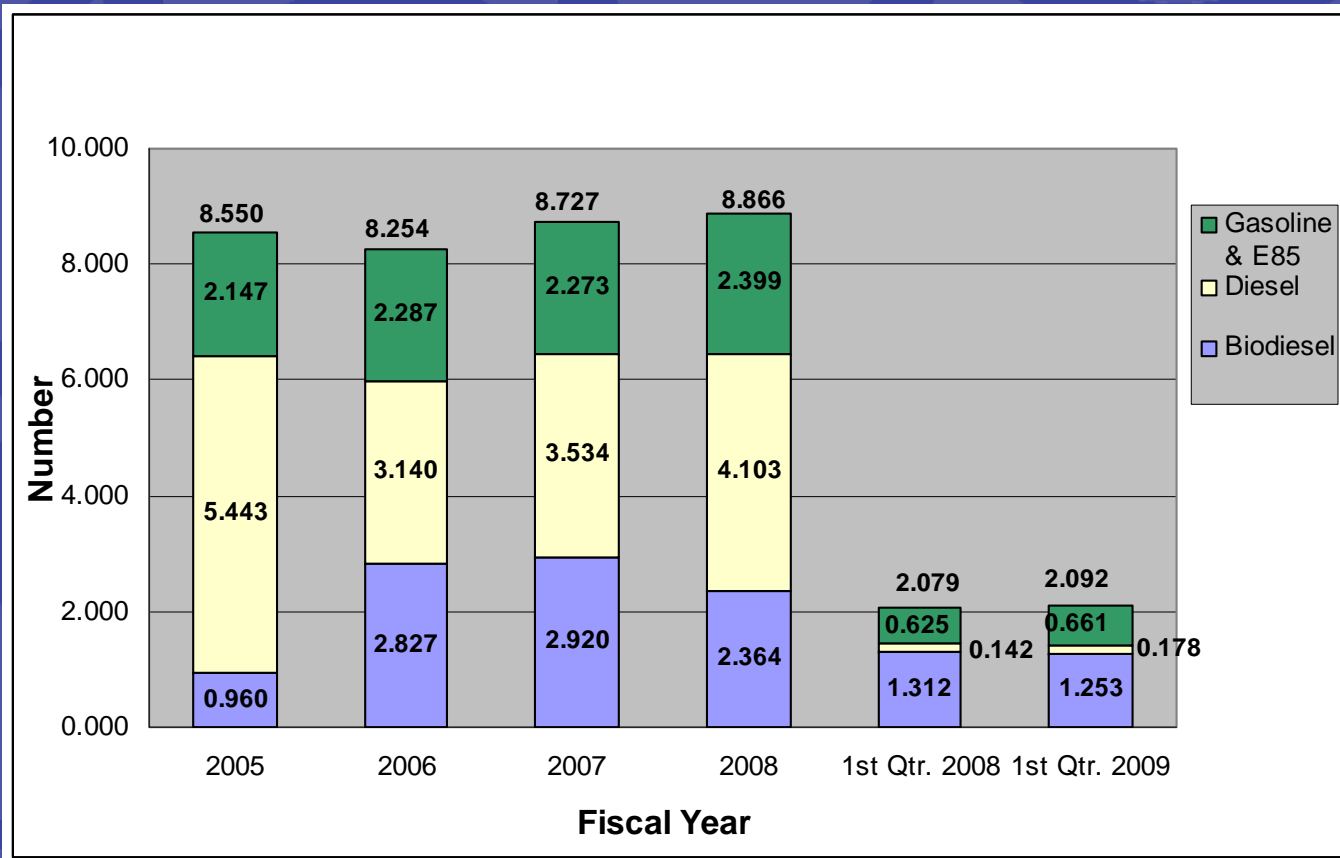
Bright Ideas

MoDOT and DNR are joining forces so our metro areas can breathe easier. Together, we have secured a \$727,000 federal grant that will help pay for MoDOT to retrofit a portion of its fleet with new technologies that will improve public health and reduce diesel emissions by approximately 288 tons per year, or about enough to fill 426 Goodyear blimps! These upgrades will also increase the fleet's fuel efficiency.



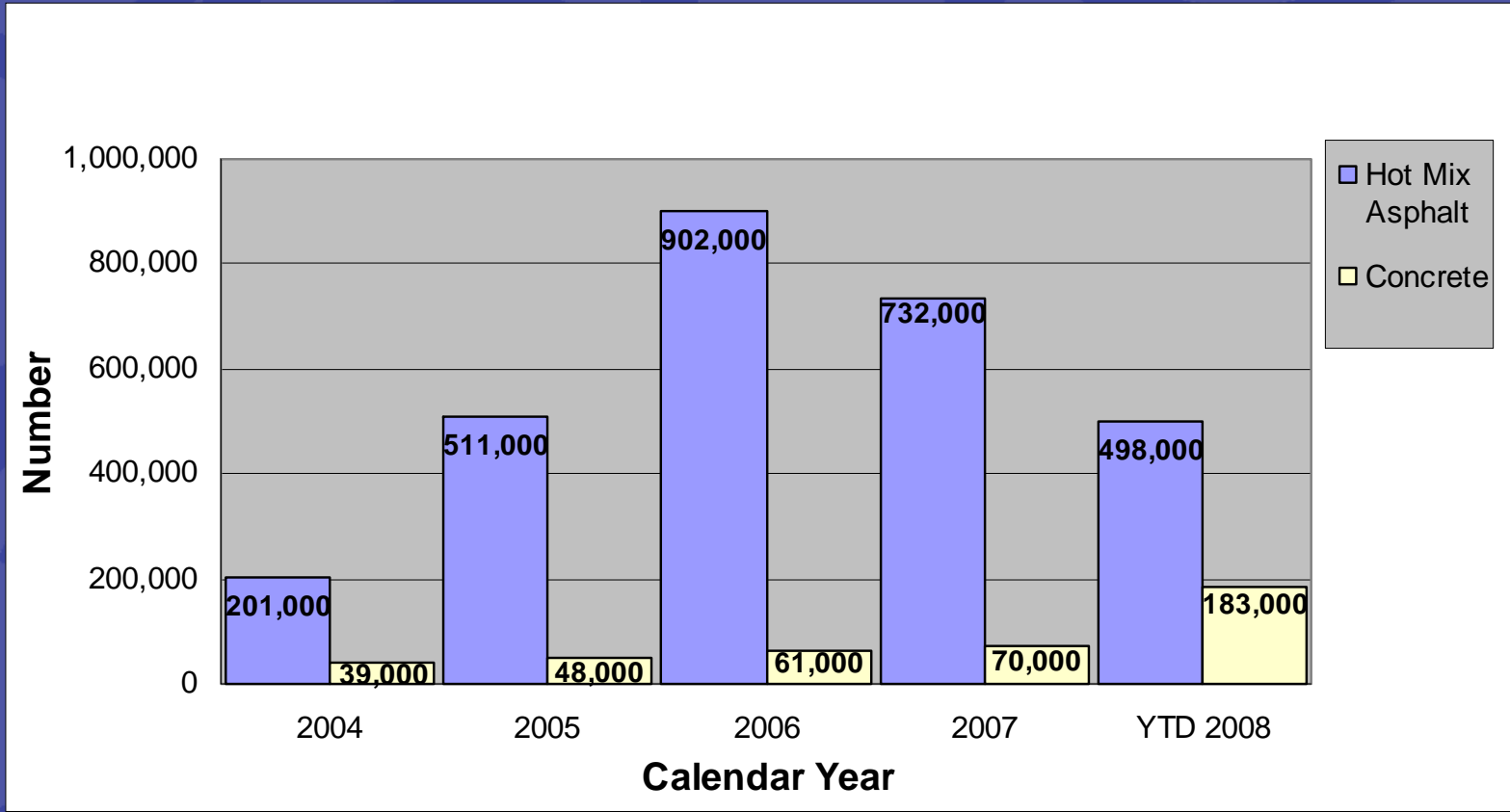



TRACKER - Number of Gallons of Fuel Consumed (in millions)



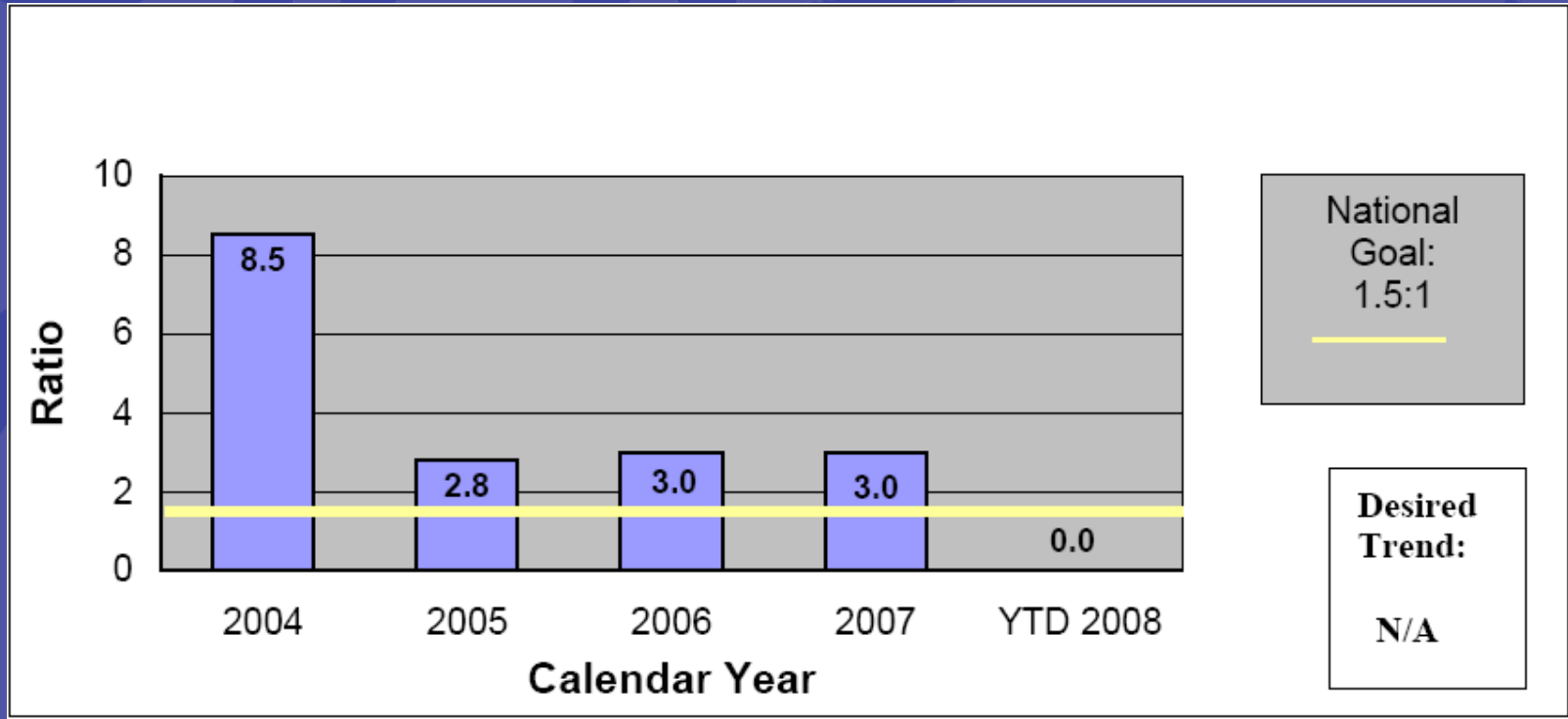


TRACKER - Number of Tons of Recycled/Waste Materials Used in Construction Projects



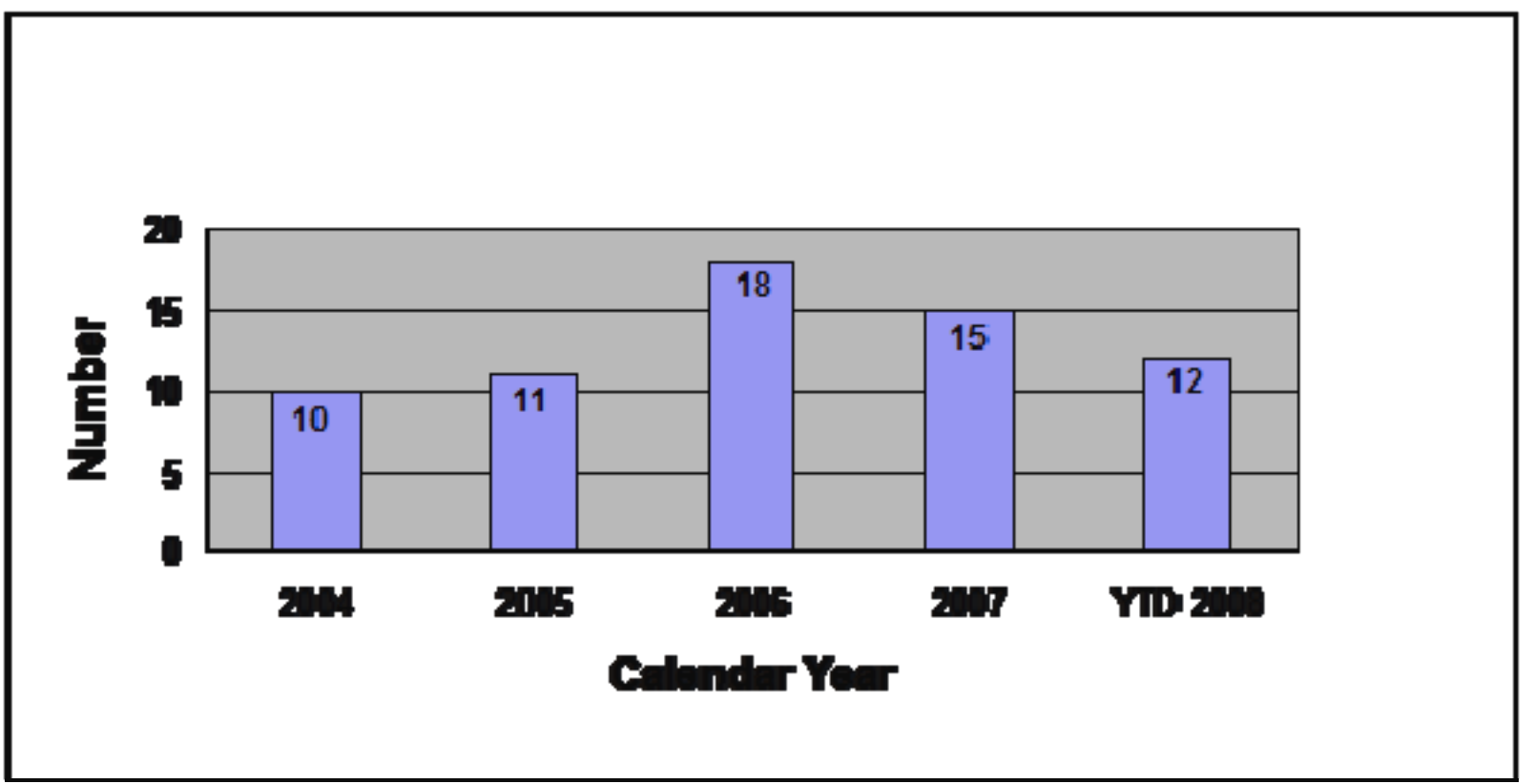


TRACKER - Ratio of Acres of Wetlands Created Compared to Acres of Wetlands Impacted



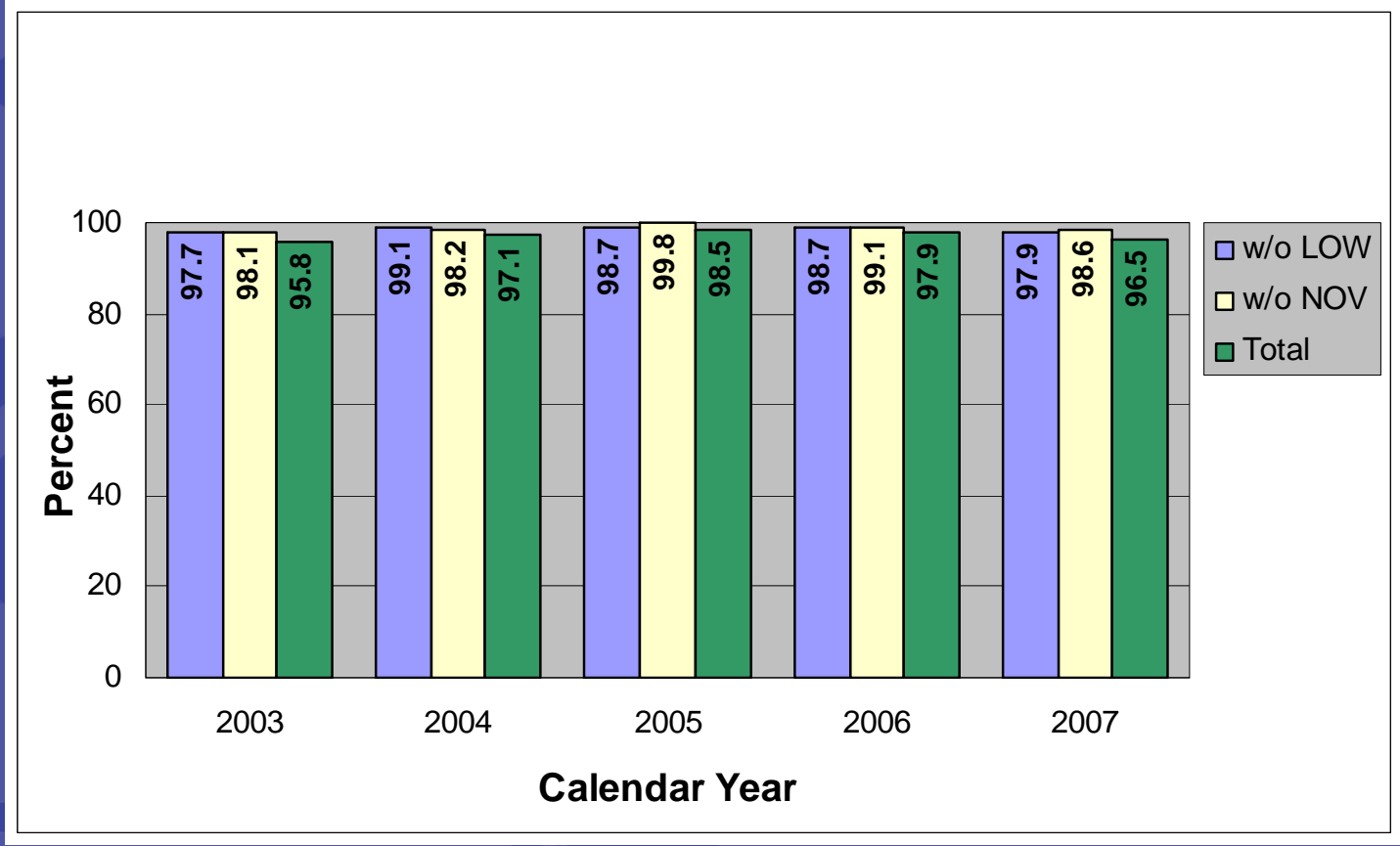


TRACKER - Number of Projects MoDOT Protects Sensitive Species or Restores Habitat



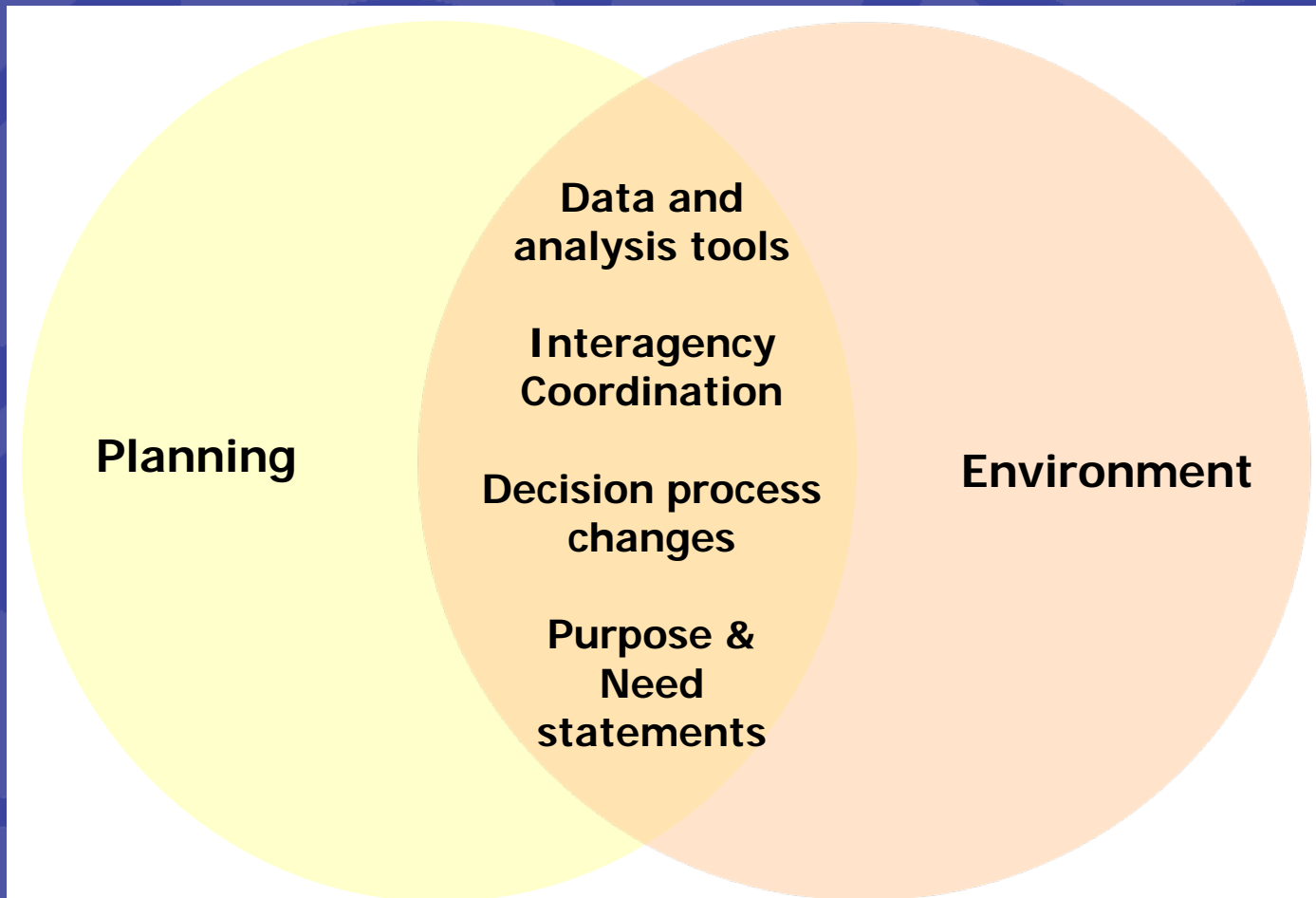


TRACKER - Percent of Projects Completed without Environmental Violation



Planning & National Environmental Policy Act (NEPA)

the intersections



Transportation Project Development

Planning

System considerations, coordination, conformity, project need

NEPA

Need alternatives and impact analysis, public/agency coordination, documentation (CE, EA/FONSI, EIS/ROD)

NEPA Approval: Location, design concept acceptance

Final Design

Right-of-Way

Construction

**Post NEPA
Project Development
Activities**

Tools, Analysis, and Coordination

- ◆ GIS
- ◆ Interagency Meetings
- ◆ Agreements
 - ◆ To share information
 - ◆ To collaborate on mitigation
 - ◆ On programmatic approaches

Best Practices

MoRAP

- ◆ Agreement and funding for MoRAP
- ◆ Agreement with MoRAP and DNR for archaeological resource mapping

MO Department of Conservation

- ◆ Consideration of aquatic conservation opportunity areas in mitigation
- ◆ Trees for Tomorrow Program

Best Practices

USACE

- ◆ Low-water crossing mitigation banking -- calculation of credits
- ◆ Programmatic mitigation strategy for Safe and Sound bridge replacement program

Tribes

- ◆ MOU with Tribes



Discussion and questions

Contacts: lee.kell@modot.mo.gov
gayle.unruh@modot.mo.gov

10/4/2004