

PLANT SCHEDULE

QTY	SYM	BOTANICAL NAME	COMMON NAME	SIZE
OVERSTORY TREE				
3	AS	<i>Asplenium nidus</i>	Spider Moss	3' Cal.
2	PA	<i>Platanus x acerifolia</i>	Biological London Planeleaf	3' Cal.
4	CB	<i>Quercus laevis</i>	Swamp White Oak	4' Cal.
6	UP	<i>Ulmus americana</i>	Live Oak	3' Cal.
ORNAMENTAL TREE				
4	AG	<i>Amelanchier canadensis</i>	Apple Serviceberry	2 1/2 H.
2	CC	<i>Crataegus mollis</i>	Thornless Crataegus Hawthorn	2 1/2 H.
EVERGREEN TREE				
27	TD	<i>Thuja canadensis</i>	Canadian Hemlock	2 1/2 H.
27	PS	<i>Pinus strobus</i>	White Pine	2 1/2 H.
PERENNIALS				
37	BM	<i>Bouteloua curtipendula</i>	Wheatgrass Bluestem	2 1/2 H.
41	RL	<i>Ribes alpinum</i>	Green Mountain Currant	2 1/2 H.
86	HC	<i>Hydrangea quercifolia</i>	Oakleaf Hydrangea	2 1/2 H.
73	BA	<i>Beta amaris</i>	Beetroot	2 1/2 H.
187	TM	<i>Taxus media</i>	Medium Spruce	2 1/2 H.
PERENNIALS				
38	AL	<i>Androsace</i>	Androsace	1-GAL.
138	AN	<i>Anemone nemorosa</i>	Wood Anemone	1-GAL.
62	AV	<i>Aconitum napellus</i>	Monarch Flower	1-GAL.
24	AC	<i>Aconitum napellus</i>	Monarch Flower	1-GAL.
40	AA	<i>Aster novae-angliae</i>	New England Aster	1-GAL.
20	BC	<i>Bouteloua curtipendula</i>	Wheatgrass Bluestem	1-GAL.
21	CS	<i>Carex stricta</i>	Tuckermans Sedge	1-GAL.
31	CO	<i>Chamaenerion</i>	Red Turtleneck	1-GAL.
103	CP	<i>Cornus rugosa</i>	Purple Spicebush	1-GAL.
137	EA	<i>Echinacea purpurea</i>	Purple Coneflower	1-GAL.
28	EV	<i>Erythronium albidum</i>	White Anemone	1-GAL.
80	EV	<i>Erythronium albidum</i>	White Anemone	1-GAL.
24	HA	<i>Helleborus x hybridus</i>	Wintergreen	1-GAL.
13	IV	<i>Iris versicolor</i>	Blue Flag Iris	1-GAL.
74	LA	<i>Lavandula angustifolia</i>	English Lavender	1-GAL.
121	LP	<i>Lupinus albus</i>	White Lupine	1-GAL.
43	LS	<i>Lobelia spicata</i>	Great Blue Lobelia	1-GAL.
15	MM	<i>Monarda mollis</i>	Spicebush	1-GAL.
181	PR	<i>Prunella spicata</i>	Russian Sage	1-GAL.
87	VA	<i>Verbena hastata</i>	Blue Verbena	1-GAL.
34	VB	<i>Verbena stricta</i>	Hairy Verbena	1-GAL.
27	VF	<i>Verbena stricta</i>	Hairy Verbena	1-GAL.

TRANSPLANT TABLE

EXISTING TREE	NEW TREE LOCATION
1' - 8" SW	17L
2' - 8" SW	27L
3' - 8" SW	37L
4' - 8" SW	47L
5' - 8" SW	57L
6' - 8" SW	67L
7' - 8" SW	77L
8' - 8" SW	87L
9' - 8" SW	97L

LANDSCAPE REQUIREMENTS

DESCRIPTION OF LANDSCAPE BUFFER	EXISTING TREE FRONTAGE PER 100' OF STREET	REQUIRED	TREE CREDITS	PROVIDED
Private Drive Parkway Buffer (50' Wide Landscape Area & 50% of Street Frontage)	3 Shade Trees	3 8" x 3' Shade Trees = 11 Shade Trees Required	8 Shade Trees (4-Less than 10" Cal.)	8 Shade Trees
50' Wide Landscape Area & 50% of Street Frontage	50 Shrubs	50 Shrubs	11 Ornamental Trees (5-Less than 10" Cal.)	6 Ornamental Trees
50' Wide Landscape Area & 50% of Street Frontage	50 Shrubs	50 Shrubs	11 Ornamental Trees (5-Less than 10" Cal.)	6 Ornamental Trees
50' Wide Landscape Area & 50% of Street Frontage	50 Shrubs	50 Shrubs	11 Ornamental Trees (5-Less than 10" Cal.)	6 Ornamental Trees
50' Wide Landscape Area & 50% of Street Frontage	50 Shrubs	50 Shrubs	11 Ornamental Trees (5-Less than 10" Cal.)	6 Ornamental Trees
50' Wide Landscape Area & 50% of Street Frontage	50 Shrubs	50 Shrubs	11 Ornamental Trees (5-Less than 10" Cal.)	6 Ornamental Trees
50' Wide Landscape Area & 50% of Street Frontage	50 Shrubs	50 Shrubs	11 Ornamental Trees (5-Less than 10" Cal.)	6 Ornamental Trees
50' Wide Landscape Area & 50% of Street Frontage	50 Shrubs	50 Shrubs	11 Ornamental Trees (5-Less than 10" Cal.)	6 Ornamental Trees
50' Wide Landscape Area & 50% of Street Frontage	50 Shrubs	50 Shrubs	11 Ornamental Trees (5-Less than 10" Cal.)	6 Ornamental Trees
50' Wide Landscape Area & 50% of Street Frontage	50 Shrubs	50 Shrubs	11 Ornamental Trees (5-Less than 10" Cal.)	6 Ornamental Trees

JOB NUMBER
- 0010

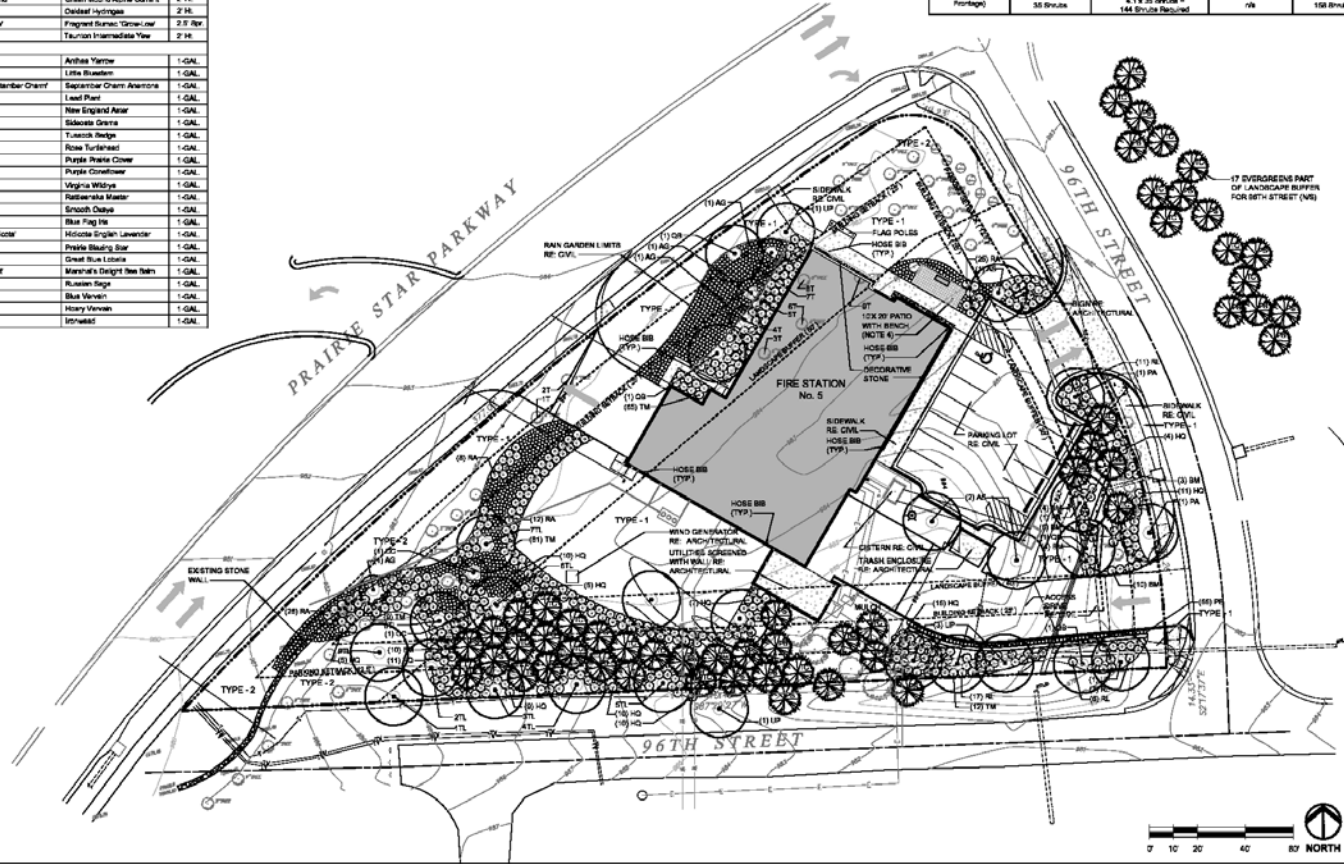
ISSUE DATE
- 08/28/08

REVISIONS

NO.	DATE	DESCRIPTION

FOR PLAN ROOM
FILE UNDER
PROJECT NUMBER

Williams Surgeon
Kuhl & Freshnook
Landscape Architects



- NOTES:**
- ALL OUTLINED AREAS NOT OTHERWISE COVERED BY BUILDING FOOTPRINT OR LANDSCAPE RED SHALL BE SOCCOED WITH BUFFALO GRASS (TYPE-1)
 - TYPE-1: BUFFALO GRASS SOCCO TYPE-2: BUFFALO GRASS SOCCO DISTURBED BY CONSTRUCTION
 - TEMPORARY IRRIGATION SHALL BE PROVIDED FROM BUILDING HOSE BIB THAT MEET THE SW ACCESS REQUIREMENT.
 - PER THE OPEN SPACE REQUIREMENTS A 10' x 20' PATIO SPACE HAS BEEN PROVIDED AT THE FRONT ENTRY OF THE BUILDING. THIS INCLUDES A BRICK DECORATIVE PAVING AND PERENNIALS SURROUNDING THE PATIO.
 - EXISTING TREES TO BE PROTECTED WITH FENCING THROUGH THE ENTIRE PROJECT AND SHALL BE INSTALLED AT THE DIAMETER OF THE TREE CANOPY
 - DECORATIVE STONE TO BE A 1'-3" RANGE OF RIVER ROCK

LENEXA FIRE STATION 5

Williams Surgeon
Kuhl & Freshnook
Landscape Architects

LANDSCAPE PLAN

L-101





