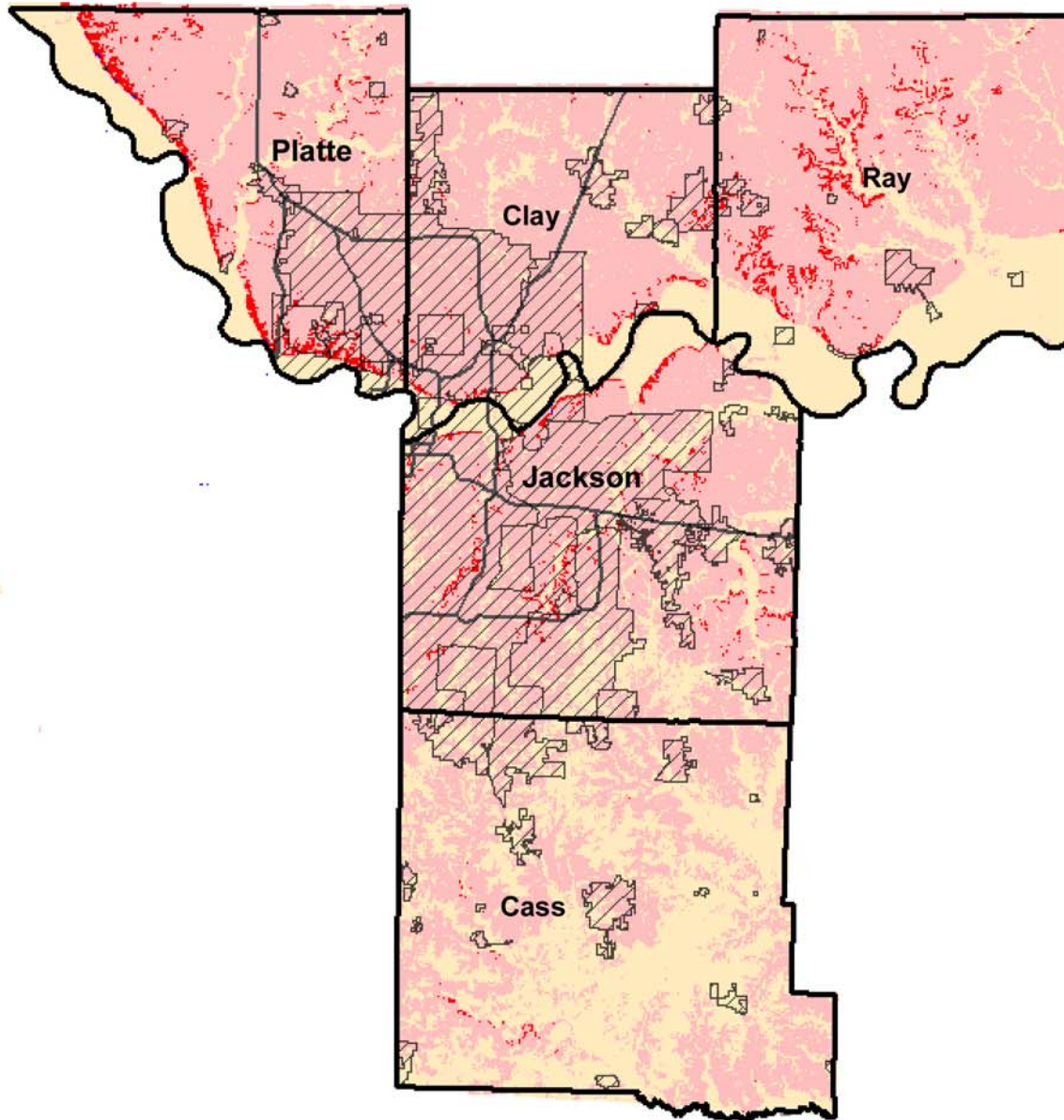


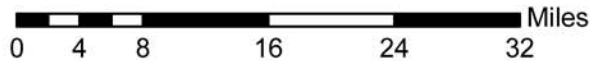
Slope Map

Legend

- Interstate Highways
- Minimal slopes
- Moderate slopes
- Steep slopes
- Extreme slopes



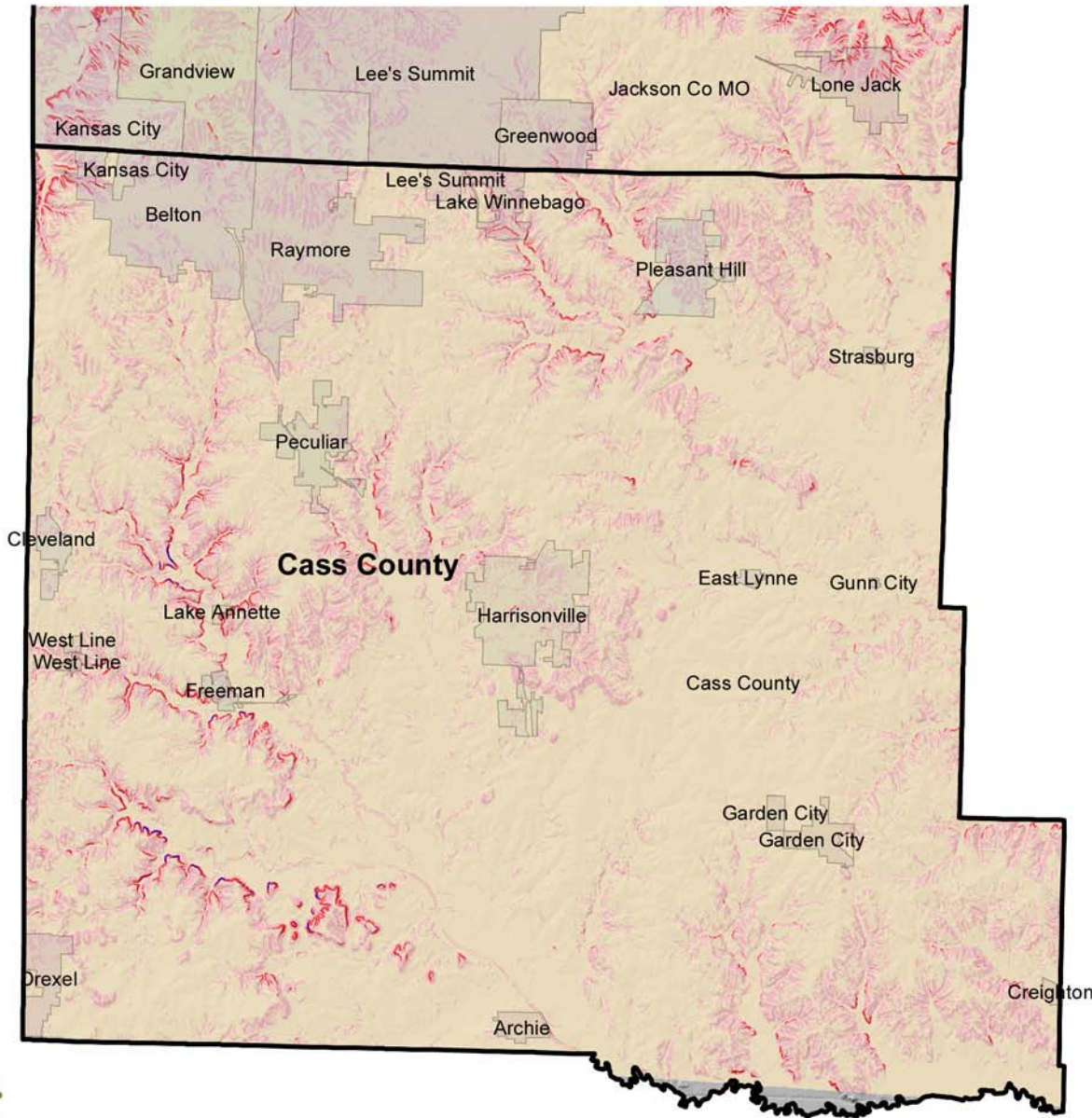
scale



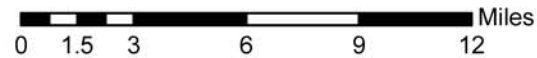
Slope Map

Legend

- Interstate Highways
- Slope Severity**
 - Minimal slopes (0-3%)
 - Moderate slopes (3-8%)
 - Steep slopes (8-16%)
 - Extreme slopes (16-36%)



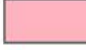




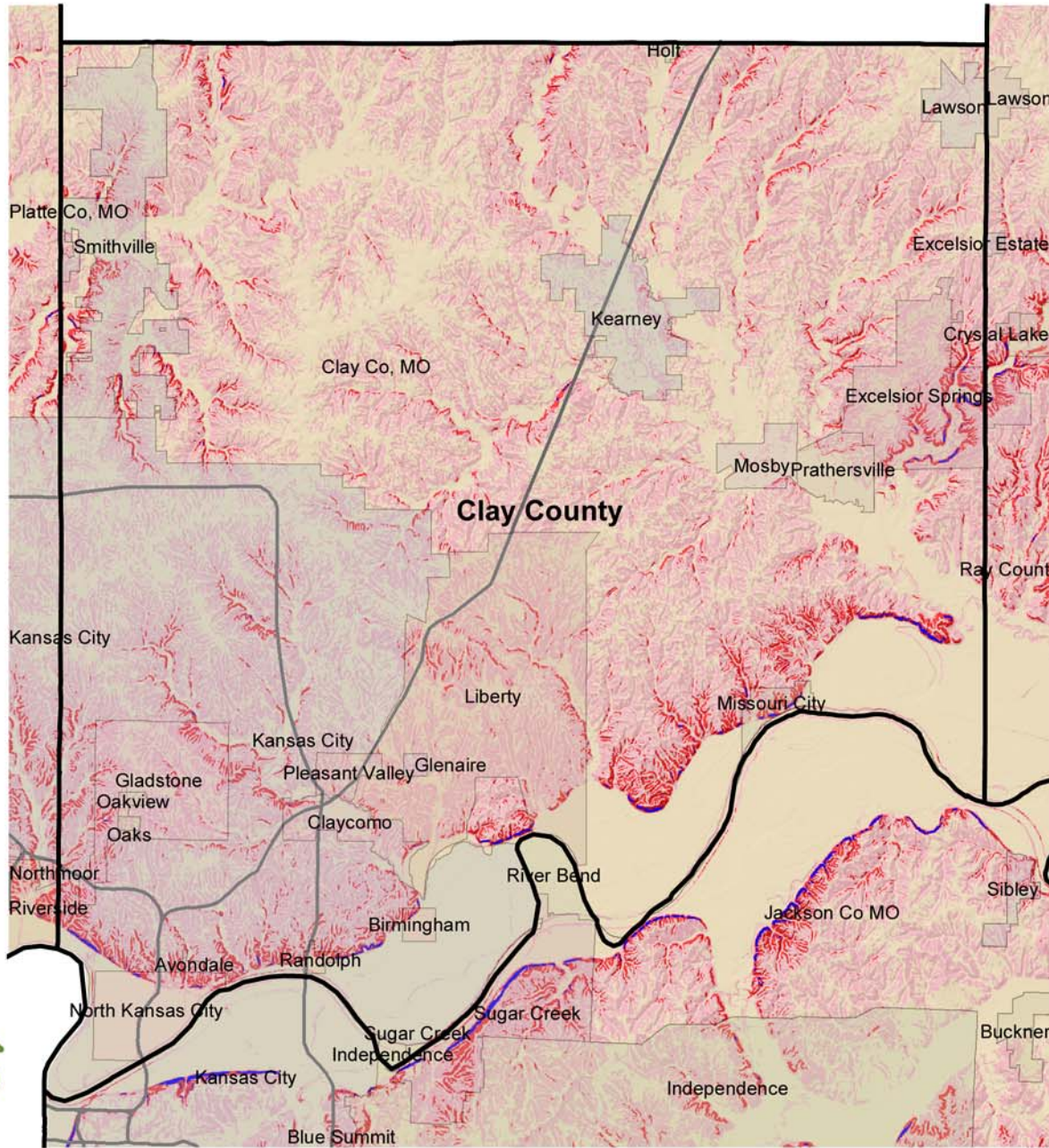
Data Sources: MARC, U.S. Environmental Protection Agency



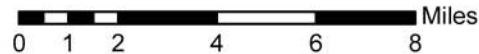
Slope Map

Legend

-  Interstate Highways
- Slope Severity**
-  Minimal slopes (0-3%)
-  Moderate slopes (3-8%)
-  Steep slopes (8-16%)
-  Extreme slopes (16-36%)



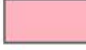




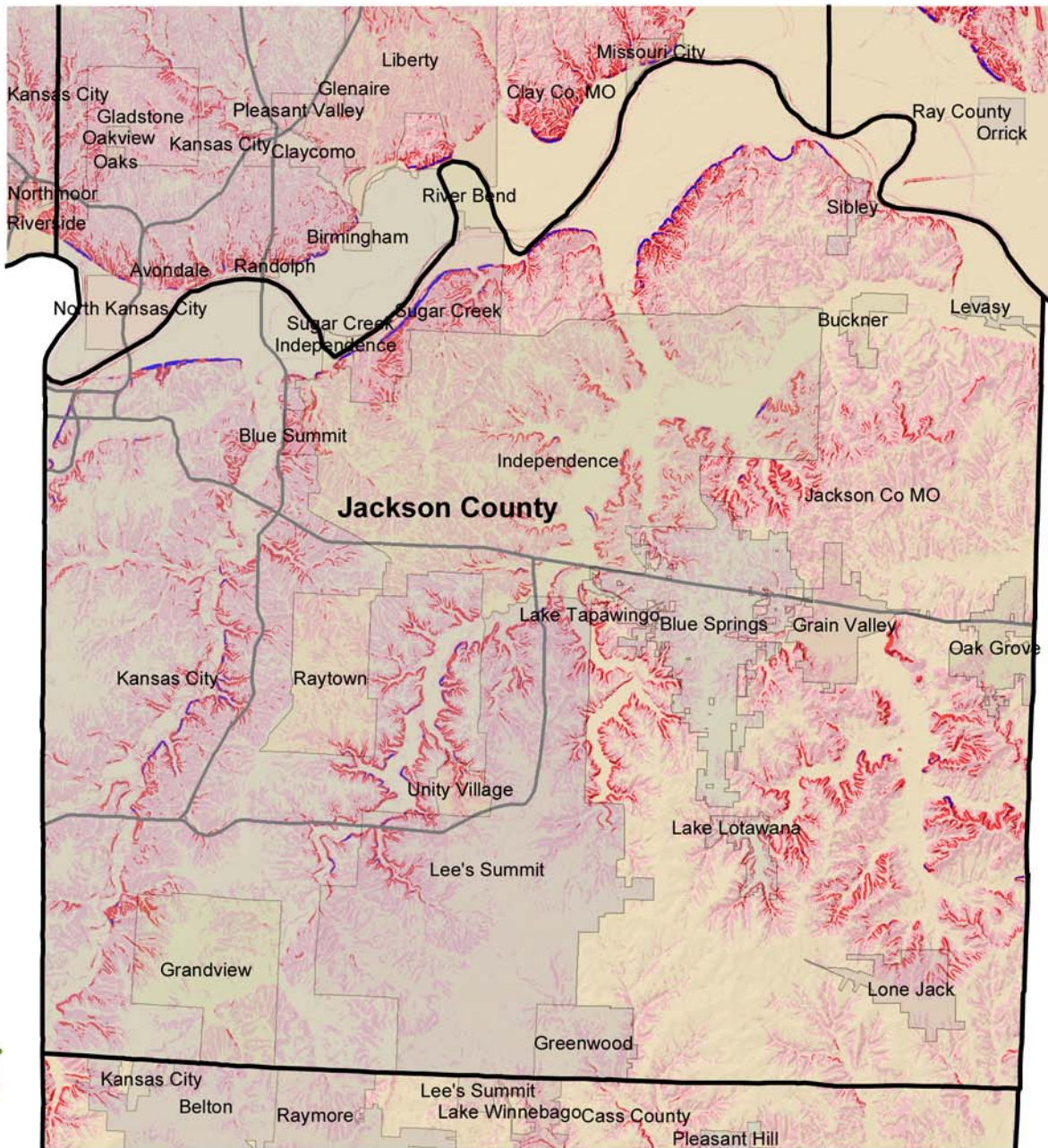
Data Sources: MARC, U.S. Environmental Protection Agency



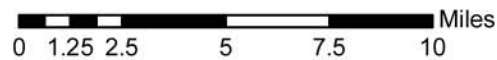
Slope Map

Legend

-  Interstate Highways
- Slope Severity**
-  Minimal slopes (0-3%)
-  Moderate slopes (3-8%)
-  Steep slopes (8-16%)
-  Extreme slopes (16-36%)



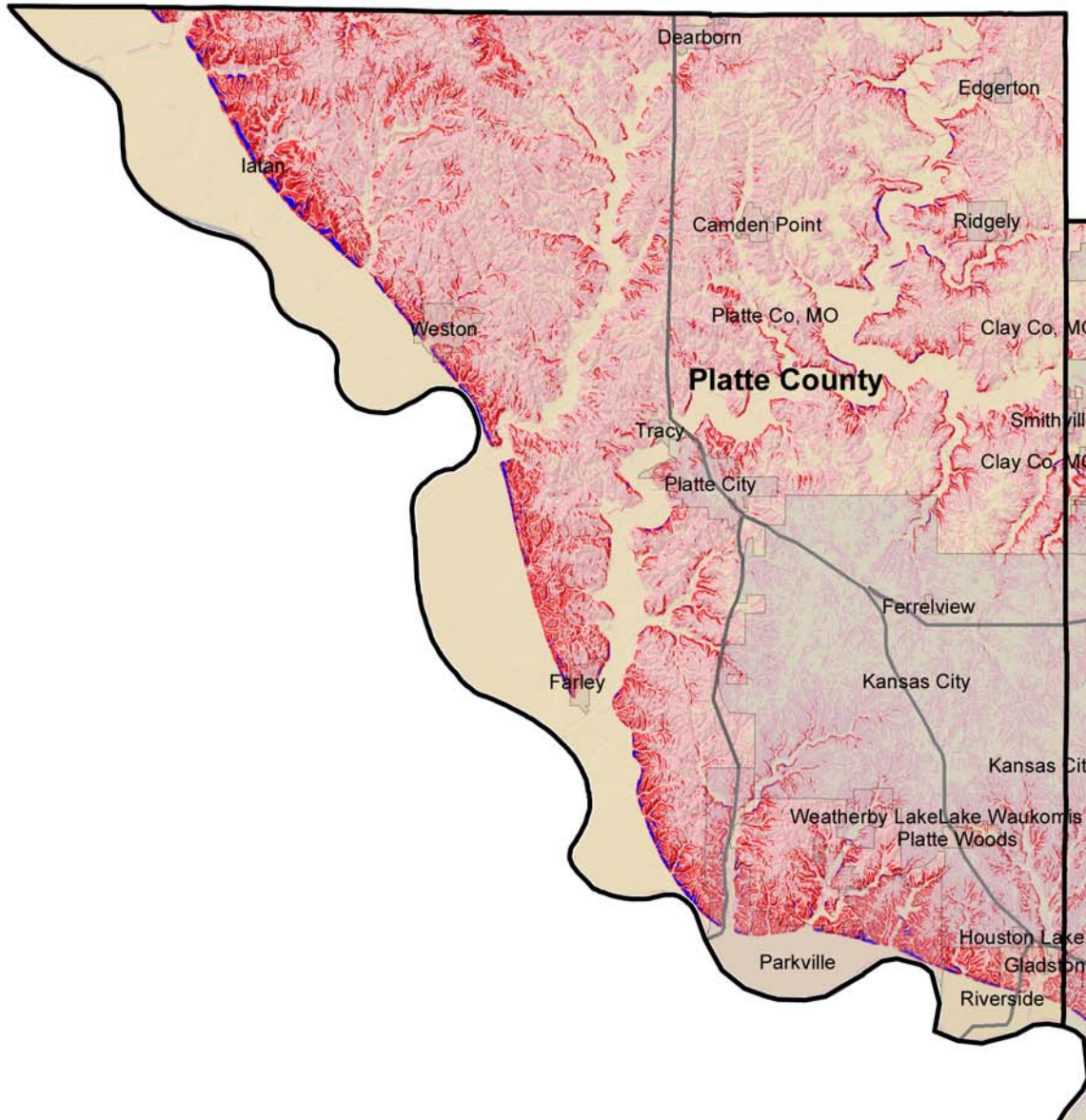
Data Sources: MARC, U.S. Environmental Protection Agency



Slope Map

Legend

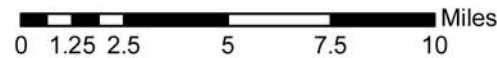
- Interstate Highways
- Slope Severity**
 - Minimal slopes (0-3%)
 - Moderate slopes (3-8%)
 - Steep slopes (8-16%)
 - Extreme slopes (16-36%)



Data Sources: MARC, U.S. Environmental Protection Agency



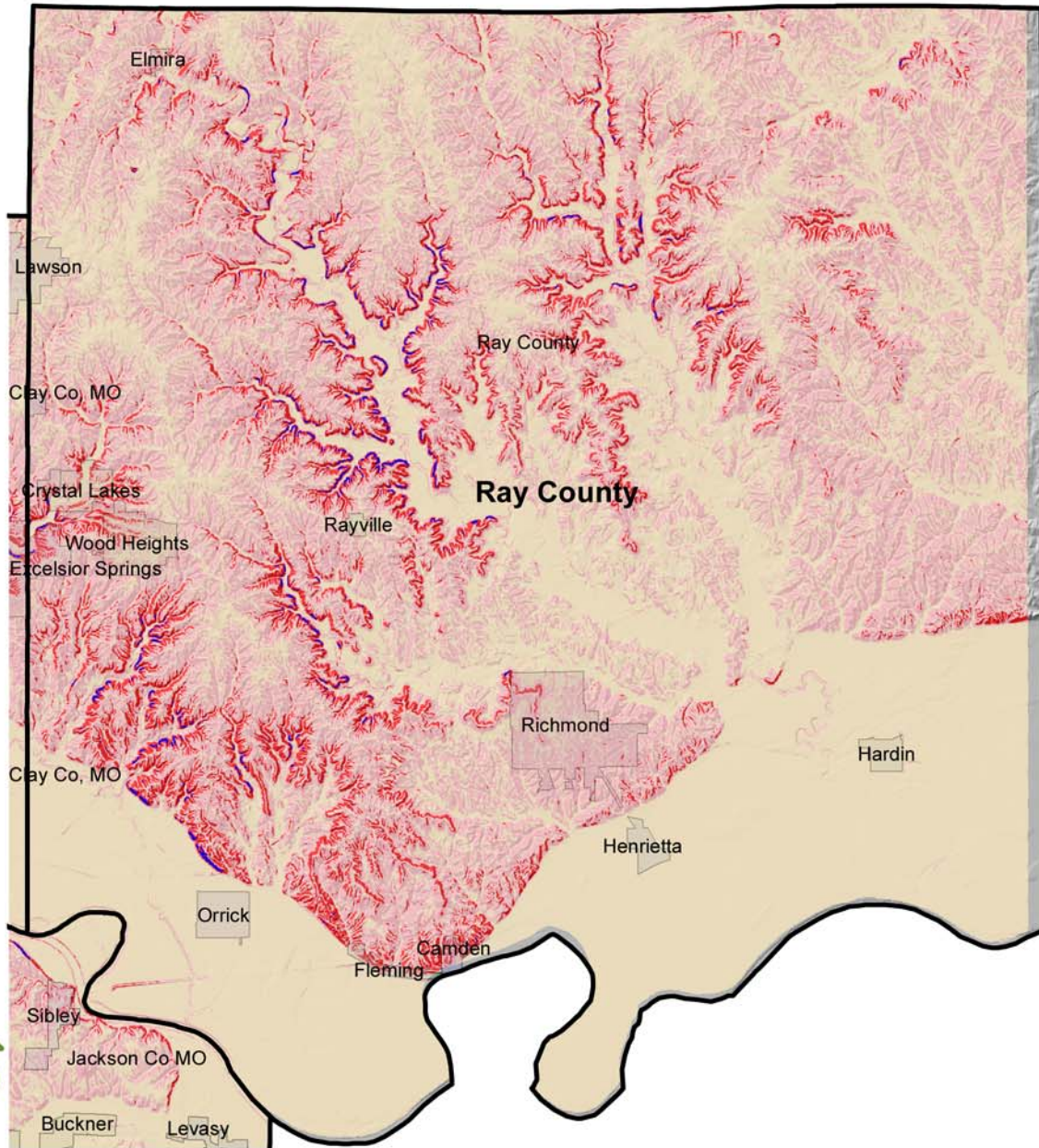
scale



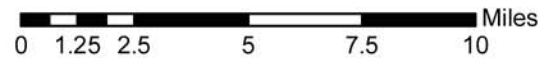
Slope Map

Legend

- Interstate Highways
- Slope Severity**
 - Minimal slopes (0-3%)
 - Moderate slopes (3-8%)
 - Steep slopes (8-16%)
 - Extreme slopes (16-36%)








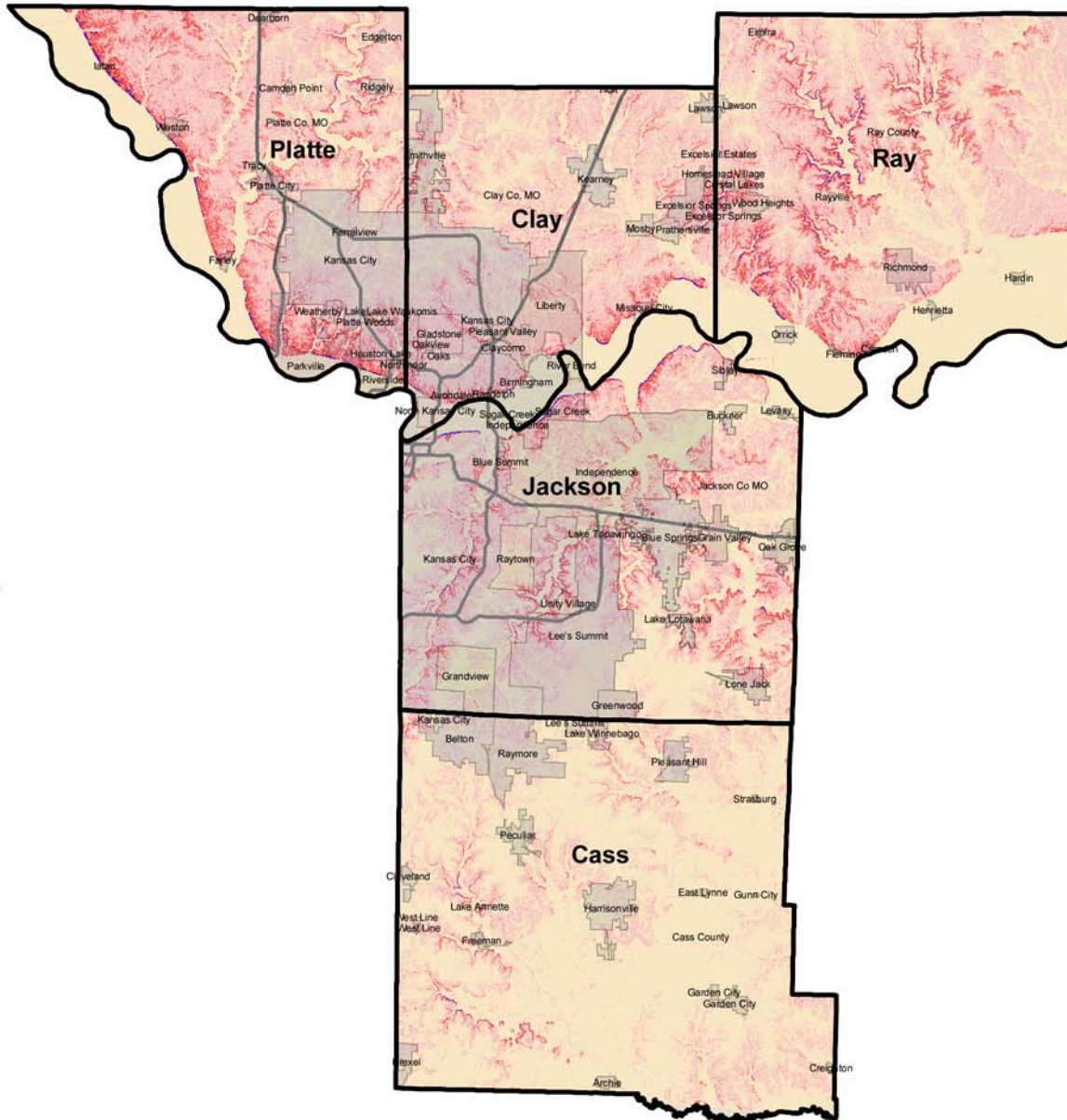
Data Sources: MARC, U.S. Environmental Protection Agency



Slope Map

Legend

-  Interstate Highways
- Slope Severity**
-  Minimal slopes (0-3%)
-  Moderate slopes (3-8%)
-  Steep slopes (8-16%)
-  Extreme slopes (16-36%)



Data Sources: MARC, U.S. Environmental Protection Agency



scale

