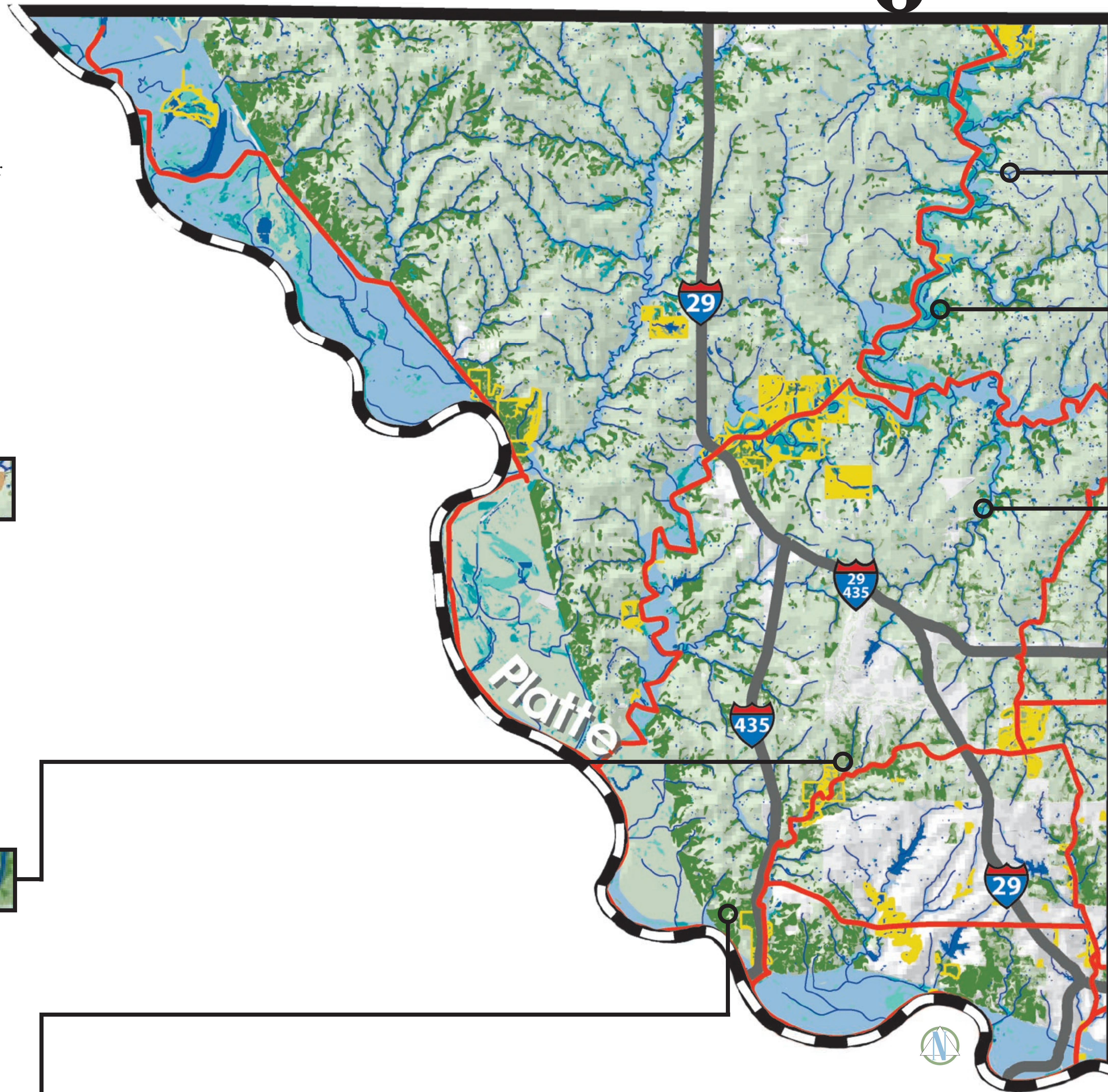


On the Map:

Conservation Planning for the Kansas City Region

The Mid-America Regional Council and partners inventoried valuable natural resource assets and ecological features in the Kansas City region. The results, shown on this map, provide a framework for area conservation plans and policies.

Platte County



Grassland

Native prairie and replanted native plants



Woodlands

Immature deciduous trees, often growing on former prairie or savanna



Forests

More mature forests, includes some junipers and former savannas



Water Features

Lakes, rivers and streams



Lowland Forests

Forests in flooded or wetland areas



Wetlands

Known wetlands and hydric soils

Legend:

- County Boundaries
- Interstate Highways
- State Line
- MetroGreen Trails
- Parks
- 100-Year Flood Plain
- Developed Land
Commercial, industrial, and residential land, includes urban forests
- Undeveloped Land
Cropland, pasture, non-native grasslands, and unclassified land

Mid-America Regional Council

PLATTE COUNTY BOARD OF APPOINTED COMMISSIONERS

Applied Ecological Services, Inc.

U.S. ENVIRONMENTAL PROTECTION AGENCY

Data represented on this map were derived from multiple sources, and MARC makes no guarantee regarding the accuracy or currentness of any data shown. This map is intended for regional-scale planning only. Data should be ground-verified for site planning or any other applications using a scale greater than 1:100,000. Flood plain data are incomplete, and not displayed for Leavenworth or Wyandotte counties. Data developed for the Natural Resource Inventory include additional land cover classifications and data layers. Please refer to the Natural Resource Inventory Technical Report for more information: www.marc.org/nri.