



# **KANSAS CITY, MISSOURI CLIMATE PROTECTION PLAN IMPLEMENTATION UPDATE**

## **Air Quality Forum**

June 10, 2009

**Gerald Shechter**

Sustainability Coordinator

KCMO Office of Environmental Quality





# Questions we should be asking

**For all those aspects of life that this community needs to sustain itself and thrive, how do we:**

- **dramatically reduce carbon emissions  
(in response to climate change)**
- **significantly increase resilience  
(in response to peak oil)**
- **greatly strengthen our local economy  
(in response to economic instability)?**

-Transition Boulder



*We can no longer import our lives in the form of food, fuel and fundamentalism. Life is homegrown, always has been. So is culture. And so too are the solutions to global problems.*

-- Paul Hawken



# KCMO Getting Started

Mayor Barnes signed the U.S. Conference of Mayor's Climate Protection Agreement in 2005



Kansas City, MO City Council passed an ordinance in 2006 authorizing the Mayor to undertake a Climate Protection Planning Process





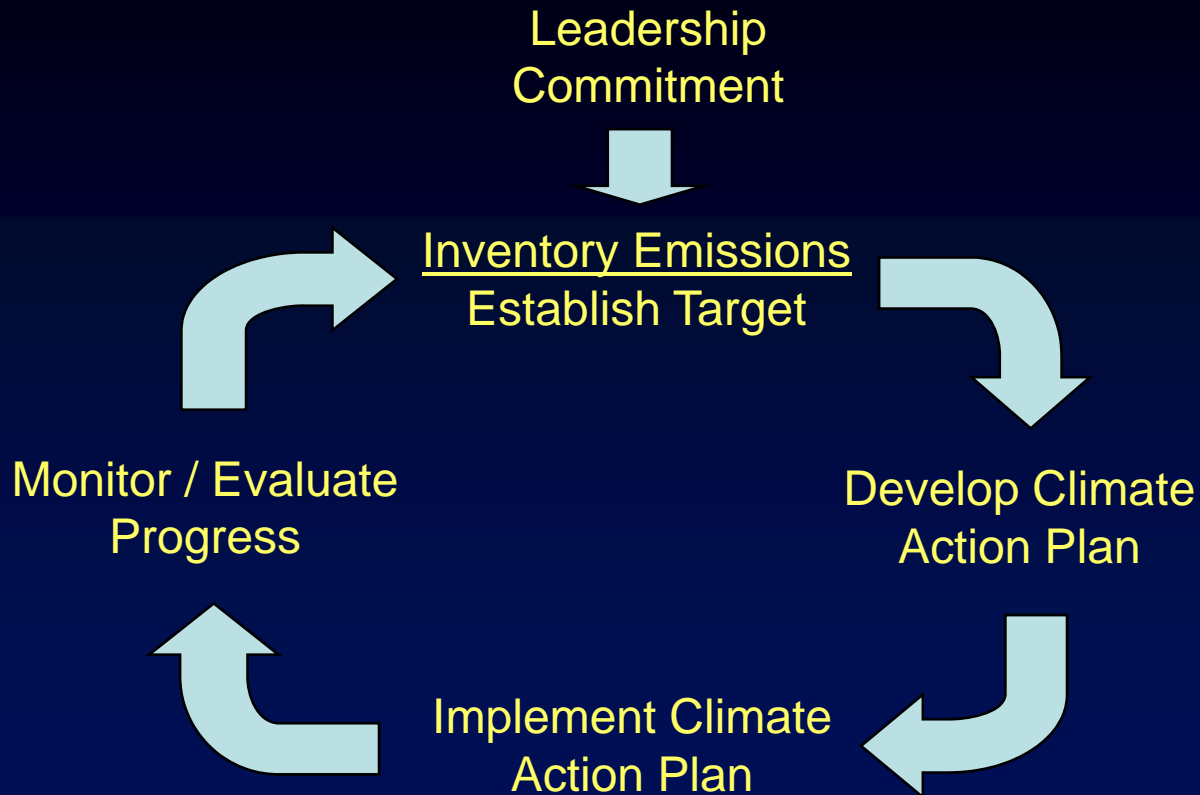
# CLIMATE PROTECTION PLANNING PROCESS

- Develop a baseline inventory
- Establish a greenhouse gas (GHG) reduction goal
- Prepare an action plan to achieve the GHG reduction goal
- Implement action plan recommendations
- Monitor, evaluate, revise





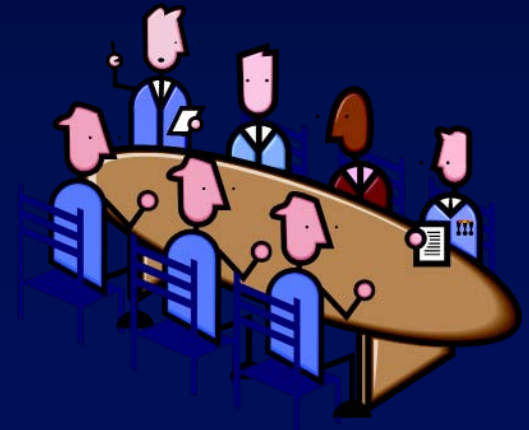
# CLIMATE PROTECTION PLANNING PROCESS ICLEI 5-Milestone Methodology





# Mayor Barnes appointed a Steering Committee in September 2006

- Oversee the planning process
- Establish a GHG reduction goal
- Make recommendations to City Council for actions to be included in the KC plan





# Steering Committee

Joanne Collins, Chair

J C Alonzo - Environmental Management Commission (Phase 1)

Bob Berkebile - Environmental Management Commission , BNIM

Scott Burnett - Jackson County Legislature

Bill Downey - Kansas City Power & Light Co.

Dee Evans - Beacon Hills Neighborhood Association

John Franklin - Assistant City Manager/WSD (Phase 2)

Pete Levi - Greater KC Chamber of Commerce

Karen McCarthy - Former US Congresswoman (Phase 2)

Bob Mann - Founding Director, Bridging The Gap

Frank Pogge - Water Services Department (Phase 1)

David Warm - Mid-America Regional Council

Bridgette Williams - Heart of America Labor Council, AFL-CIO





# Work Groups created to develop suggested action plans in specific areas

## Phase 1

- Energy
- Transportation
- Carbon Offsets & Waste Management
- Policy and Outreach



## Phase 2

- Buildings & Infrastructure
- Transportation





# Work Groups

- Consider list of possible actions & suggest additional ideas — Began with list of best practices in “Natural Capitalism Solutions – Climate Protection Manual for Cities”; November, 2006
- Evaluate GHG reduction estimates for various actions
- Make recommendations





## City Staff



- Develop baseline inventory of GHG emissions
- Identify current City programs, activities, policies relevant to GHG reductions
- Identify current regional initiatives relevant to GHG reductions
- Identify initiatives from KCMO Environmental Management Commission Report, other City plans, & Climate Protection Manual for Cities





# Steering Committee

- Review baseline inventory of GHG emissions
- Review and revise work group recommendations
- Adopt greenhouse gas emission reduction recommendations to be sent to Mayor and City Council
- Adopt policy statement to be sent to Mayor and City Council





# GHG Emission Analysis 2000-2005

City government GHG emissions



6.8%

while

Community-wide GHG emissions

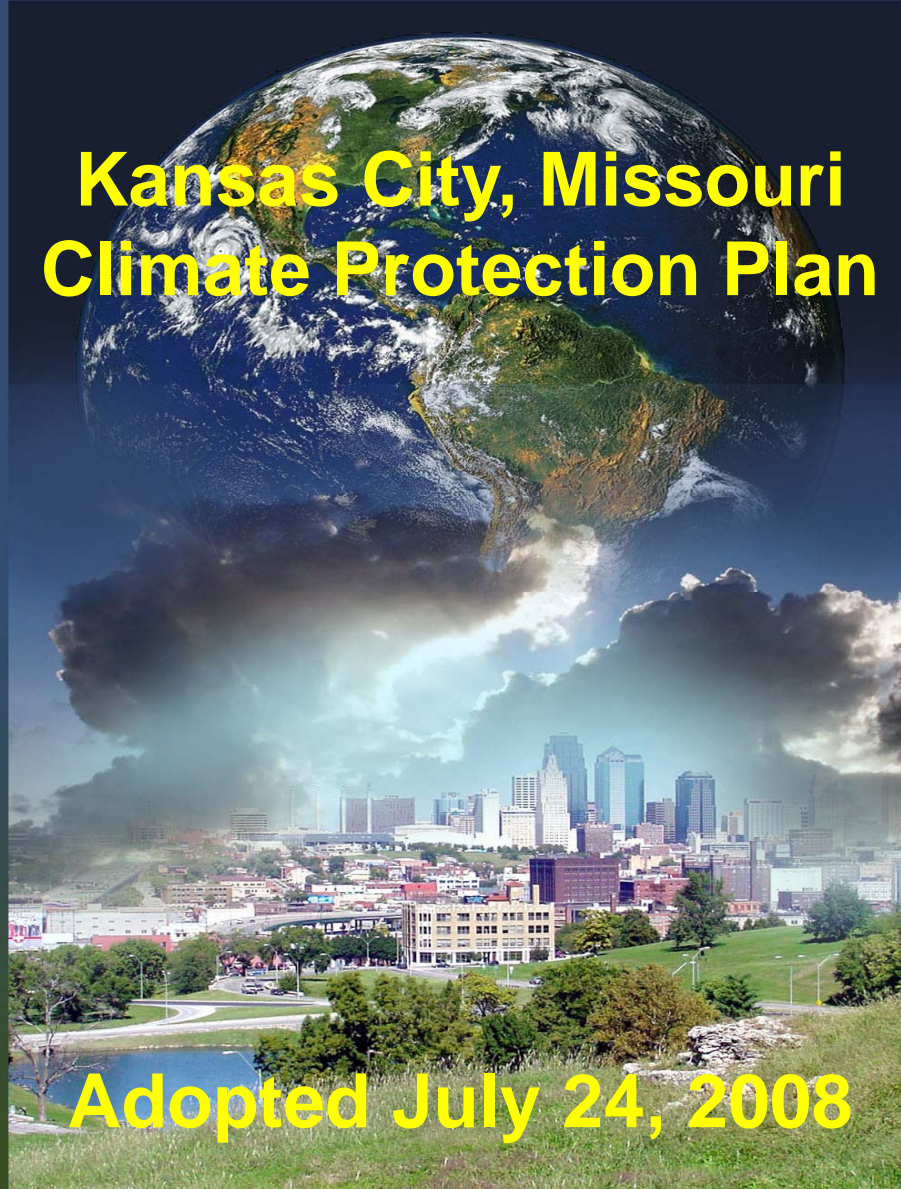


3.8%





# Kansas City, Missouri Climate Protection Plan



**Adopted July 24, 2008**





# Recommendations Adopted by Mayor and City Council - July, 2008

- Climate protection & GHG emission reduction a key factor in all City decisions
- GHG emissions reduction goals
  - City operations by **30%** below 2000 levels by 2020
  - Community-wide by **30%** below 2000 levels by 2020
  - **Community-wide by 80% below 2000 levels by 2050**
  - **KC aspires to be a climate-neutral city**
- Adopt the recommendations with flexibility to implement in a timely & workable manner
- Support the continuation of the Steering Committee as an ongoing oversight entity for implementation of Kansas City's Climate Protection Plan.





## Policies & Programs

- ✓ Climate Protection Planning
- ✓ Green Solutions Policy
- ✓ Economic Development Incentives Policy
- ✓ IECC 2006 – upgraded energy codes
- ✓ Climate Protection Partnership
- ✓ Green Solutions Team
- ✓ Sustainable Skylines Initiative
- ✓ America's Green Region





## Policies & Programs

- ✓ Contribute to a Sustainable KC
- ✓ Energy Star Housing
- ✓ LEED-Silver
- ✓ Stream Buffer
- ✓ Open Space & Conservation Development
- ✓ Overflow Control Plan to EPA
- ✓ Show Me Green Sales Tax Holiday
- ✓ Green Impact Zone





# Greenhouse Gas (GHG) Emission Reduction Measures





# GHG Reduction Measures

- Energy efficiency improvements in City buildings save over \$2 million annually in utility expenses
- Bartle Hall Ballroom Expansion achieved LEED-Silver rating by USGBC
- Four more construction projects in process  
3 – LEED-Silver, 1 – LEED-Gold
- Million Lights campaign exceeded its goal of 1 million CFLs by over 50% projecting at least 375,000 tons of GHG reductions over life of bulbs
- Water Services Dept. initiatives
  - Energy efficient pumps & motors
  - Methane recovery from wastewater treatment
  - Purchase & use of waste CO<sub>2</sub>





# GHG Reduction Measures (cont'd)

- Continue to replace street lights & traffic signals with energy efficient technology
- Alternative Fuels – SustainLane rated KC #3 of the 50 largest cities for vehicles operating with alternative fuels (50%)
- Parks & Recreation “Nature First” program to convert turf grass to native plants
- Completion of a Comprehensive Solid Waste Management Plan
- Trails KC/Bike KC - Master Plans for a city-wide system of bike/ped trails





# GHG Reduction Measures (cont'd)

- Plant additional 120,000 trees & increase urban canopy from 32% to 40% across entire city
- Install green roofs on municipal buildings
- Convert turf grass to native plants
- Promote Rain gardens
- Disconnect downspouts





# Regional Initiatives

- Clean Cities Coalition
- KCP&L/Sierra Club/Concerned Citizens of Platte County agreement to offset 6 million tons/year of GHG emissions
- Strategy to Become America's Green Region
- Conversations on the Environment
- Bi-state group of 18 metro area mayors has signed the US Conference of Mayors Climate Protection Agreement
- Greater KC Chamber of Commerce established the Climate Protection Partnership of businesses and institutions – 167 partners at 4/06/09 – committing to assess their energy and carbon footprint and to take action
- Sustainable Skylines Initiative
- MARC –OneKC Voice - ImagineKC





# Climate Protection Plan

## Major Areas of Emphasis

- Reduce vehicle emissions
- Reduce GHG impacts of current & future building stock
- Enhance and expand energy efficiency & renewable energy initiatives and programs
- Public education & outreach promoting energy efficiency goals and leading to citizen engagement & action





# GHG Emission Reduction Measures

Work has begun on 48 of the 55  
greenhouse gas reduction measures  
outlined in the Climate Protection Plan





# ARRA - EECBG

American Recovery & Reinvestment  
Act of 2009 (ARRA)

Energy Efficiency and Conservation  
Block Grant

Energy Efficiency and Conservation  
Strategy

Nine programs/projects





## **EECBG – Based on CPP**

1. Blue River Athletic Field Trail
2. Development Code / Area Plan Revisions for Transportation Efficiency
3. Energy Codes Upgrade
4. Energy Conservation Project 1
5. PC Power Management
6. Public Education and Outreach
7. Signal Lamp Conversion to LED
8. Strategic Regional Planning for EE & C
9. Traffic Signal Synchronization Center





# KCMO Climate Protection Plan

Developed to Advance Sustainability  
In City Government and Community-wide



Social Equity - Economy – Environment  
(People – Prosperity – Place)





# Climate Protection Benefits for Local Governments

- ✓ Save taxpayer dollars through energy efficiency and transportation initiatives
- ✓ Build the local economy and create jobs (demand for energy efficient services and products, competitive edge)
- ✓ Improve air quality and public health (global warming and air pollution hand in hand)
- ✓ Invest in long-term community livability
- ✓ Connect cities with national leaders and Resources
- ✓ Inspire community engagement
- ✓ Create a legacy of leadership





# Kansas City, Missouri Climate Protection Plan and Seven Appendices

Accessible in pdf at:

[www.kcmo.org/manager.nsf/web/cpp](http://www.kcmo.org/manager.nsf/web/cpp)

(816) 513-3401

Gerald\_Shechter@kcmo.org



