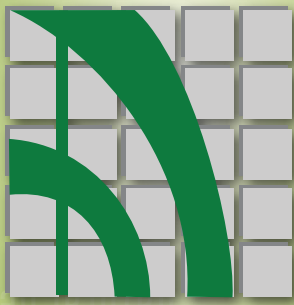


two states • seven counties • one regional greenway system

metrogreen



lakes
wildlife
heritage
PRESERVATION
parks
watersheds
COMMUNITY
connections
sustainability
HEALTH
TRANSPORTATION
accessibility
GREENWAYS
walking
nature
natural resources
streams
hiking
ENVIRONMENT
TWO
states
SEVEN
counties
ONE
regional greenway system

www.marc.org/metrogreen

MARC mid-america regional council
600 broadway, suite 200
kansas city, mo 64105
816/474-4240 • www.marc.org

♻️ printed on recycled paper

Funding for this project provided by the William T. Kemper Foundation and by U.S. Environmental Protection Agency Region 7 through the Missouri Department of Natural Resources. Partial funding provided under Section 604(b) of the Clean Water Act. MoDNR Subgrant G09-WQM-02.



The Kansas City region has always been trail-wise. Beginning in the early 1800s when a restless population of immigrants migrated west across the American frontier, all trails led through Kansas City. MetroGreen® provides a greenprint for a metropolitan trails system that connects urban and rural green corridors throughout seven counties in the Kansas City region. The plan is also designed to protect and improve water quality in the region, conserving and enhancing the region's existing natural elements. Above all, MetroGreen exists to ensure that area residents continue to enjoy a high quality of life.

GREENWAYS sustainability

what is METROGREEN®?

MetroGreen® is an interconnected regional greenway system for the Kansas City metropolitan area. It principally consists of linear corridors of land found along streams, roadways and within abandoned rail corridors. Many of these corridors include hiking and biking trails that connect users to adjoining natural areas and important destinations. MetroGreen is a natural extension of the Kansas City area's trails heritage. The plan currently covers Leavenworth, Johnson and Wyandotte counties in Kansas, and Cass, Clay, Jackson and Platte counties in Missouri.

The concept of a metro greenway system is not new. MetroGreen extends the "parkways and boulevards" concept of the 1894 Kessler Plan for Kansas City, Missouri, and builds on existing local greenway plans and systems. MetroGreen was launched in 1991 by the Prairie Gateway Chapter of the American Society of Landscape Architects.

MetroGreen includes more than 75 separate corridors that form a regional network to connect many of the area's most valuable assets. Over 200 miles of the system's trails have been constructed and an additional 100 miles are planned for construction in the next 10 years.

natural resources ENVIRONMENT

METROGREEN® will:

- Offer recreation and alternative transportation opportunities;
- Enhance the value of adjacent properties and bolster the region's economic competitiveness;
- Provide close-to-home and close-to-work access to popular destinations such as schools, parks and shopping centers;
- Promote the conservation of our region's precious natural heritage in urban, suburban and rural settings;
- Protect important natural resources and landscapes, water resources and wildlife habitat;
- Preserve open space in advance of development to alleviate potential flooding problems and guide future growth;
- Serve as a focal point for redevelopment and reinvestment in the urban core and in brownfield areas along primary streams;
- Influence the pattern of land use by protecting green corridors and open-space resources;
- Provide educational resources for youth and adults and encourage them to celebrate the historic, cultural and environmental attributes of the metro region.

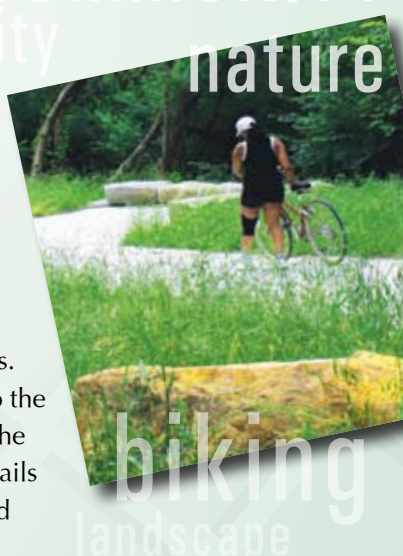


accessibility water quality COMMUNITY nature

who will use METROGREEN®?

In regional citizen satisfaction surveys, area residents continually express their desire to have more places to walk and bike in their communities. MetroGreen will provide improved accessibility to the outdoors for residents and visitors alike. Many of the corridors in the MetroGreen system will contain trails for hiking, bicycling, jogging, horseback riding and other activities.

The majority of MetroGreen corridors are off-road and adjacent to streams, area lakes and the Missouri and Kansas rivers. The stream corridors will provide new opportunities for the region to protect water quality, reduce problems from flooding and preserve important natural habitats. Some MetroGreen corridors will be developed adjacent to or connected to roadways, making them available for commuting or other daily trips.



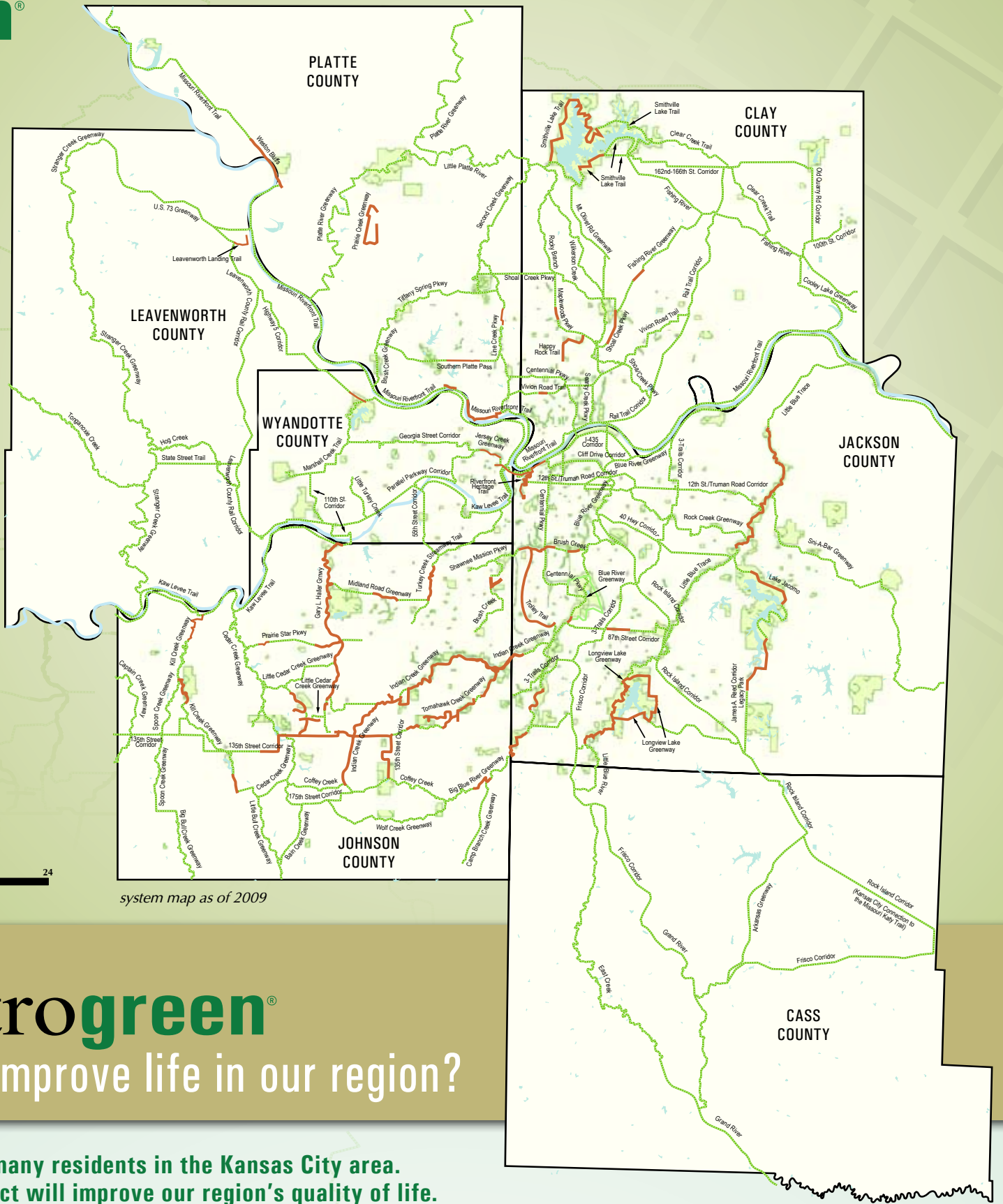
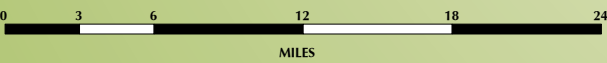
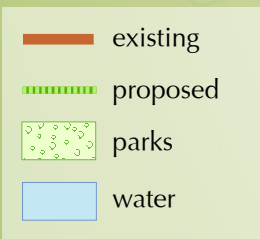
connections natural heritage walking TRANSPORTATION

• Learn how MetroGreen will improve life in our region
• View the MetroGreen system map

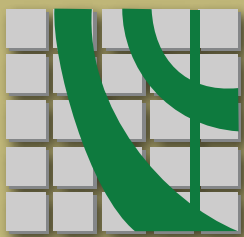
metrogreen[®] SYSTEM MAP



View the detailed and interactive MetroGreen[®] system map at www.marc.org/metrogreen



system map as of 2009



how will metrogreen[®] improve life in our region?

MetroGreen[®] will touch the lives of many residents in the Kansas City area. Here are some of the ways this project will improve our region's quality of life.

Water Quality Benefits

Greenways preserve wooded open spaces along creeks and streams which absorb flood waters and filter pollutants from stormwater. MetroGreen corridors serve as primary flood water storage zones during periods of heavy rainfall, keeping businesses and homes safe. Greenways also improve the surface water quality of local rivers and creeks. The floodplain forests and wetlands contained within greenway corridors filter pollutants from stormwater. By preserving these greenway corridors, MetroGreen protects residential and commercial property and improves regional water quality.

Air Quality Benefits

Greenways serve as alternative transportation corridors that reduce traffic congestion and improve air quality. MetroGreen offers people the option to walk or bicycle to locations within a short distance from their homes, thereby reducing congestion and automobile emissions.

Habitat Benefits

Greenway corridors provide essential food sources and access to water that is required by all wildlife. MetroGreen corridors serve as viable habitat for many species of plants and wildlife and help maintain gene pool integrity. MetroGreen promotes local programs to protect valuable existing forest and wetland areas and to reclaim and restore streams to support high quality habitat.

Transportation Benefits

MetroGreen corridors are designed to serve as extensions of road networks, offering realistic and viable opportunities for people to travel by foot and on bicycle to destinations throughout the metro region. MetroGreen provides a non-motorized alternative transportation system that allows close-to-home access to places where people live, work and play.

Economic Benefits

MetroGreen offers numerous economic benefits, including higher real estate values, increased tourism and recreation-related revenues, and cost savings for public services. MetroGreen improves the value of properties adjacent to corridors and encourages developers to provide pedestrian access to the corridor system. MetroGreen also enhances the role tourism plays in the local economy as it connects people to regionally significant natural resources and cultural destinations.

Cultural Benefits

Preserving and protecting our native landscapes improves our quality of life. Many MetroGreen corridors connect users to our region's most important cultural and historic facilities and sites. Greenway systems like MetroGreen enhance regional culture and protect historic resources in metropolitan areas.

Safety and Security Benefits

As recreation resources, alternative transportation corridors or areas where fitness activities take place, most greenways are safer and more user-friendly than local roads. Greenways have also proven to be an effective tool to encourage residents to participate in neighborhood watch programs. Crime statistics and reports from law enforcement officials have shown that parks and greenways typically have lower incidences of reported criminal activity. MetroGreen promotes more public activity in parks, trails and open space, making them safe for local residents.

Health and Recreation Benefits

Greenways contribute to public health by encouraging more people to walk or bike to short-distance destinations. MetroGreen provides opportunities for people to participate in these outdoor activities, which is an important component of living a healthy lifestyle.

