



# Regional Safety Blueprint Process

**A**  **Perspective**  
Mid-America Regional Council

**Michael Briggs**  
**Transportation Planner**  
**Mid-America Regional Council**

# The Kansas City Region



# Long Range Transportation Plan (LRTP)

- Developed by MPOs
  - 3 C's: Continuing, Cooperative, Comprehensive
  - Regional partnerships & input
  - Safety Conscious Planning (SCP)
- Blueprint for managing the region's transportation through 2030
- Direct decision-making process

# *Transportation Outlook 2030*

- Adopted in 2003
  - “...improve the safety, security and well-being of the traveling public.”
  - Modal elements
- Update of *Transportation Outlook 2030* in 2006
  - Year long process
  - New safety element

# Comprehensive Highway Safety Plans (CHSP)

- Developed by State DOTs
  - 3 C's: Collaborative, Coordinated, Comprehensive
  - Statewide partnerships & input
  - 2008 AASHTO Fatality Goal
- Umbrella guide for coordination, communication, & collaboration
- Proactive process

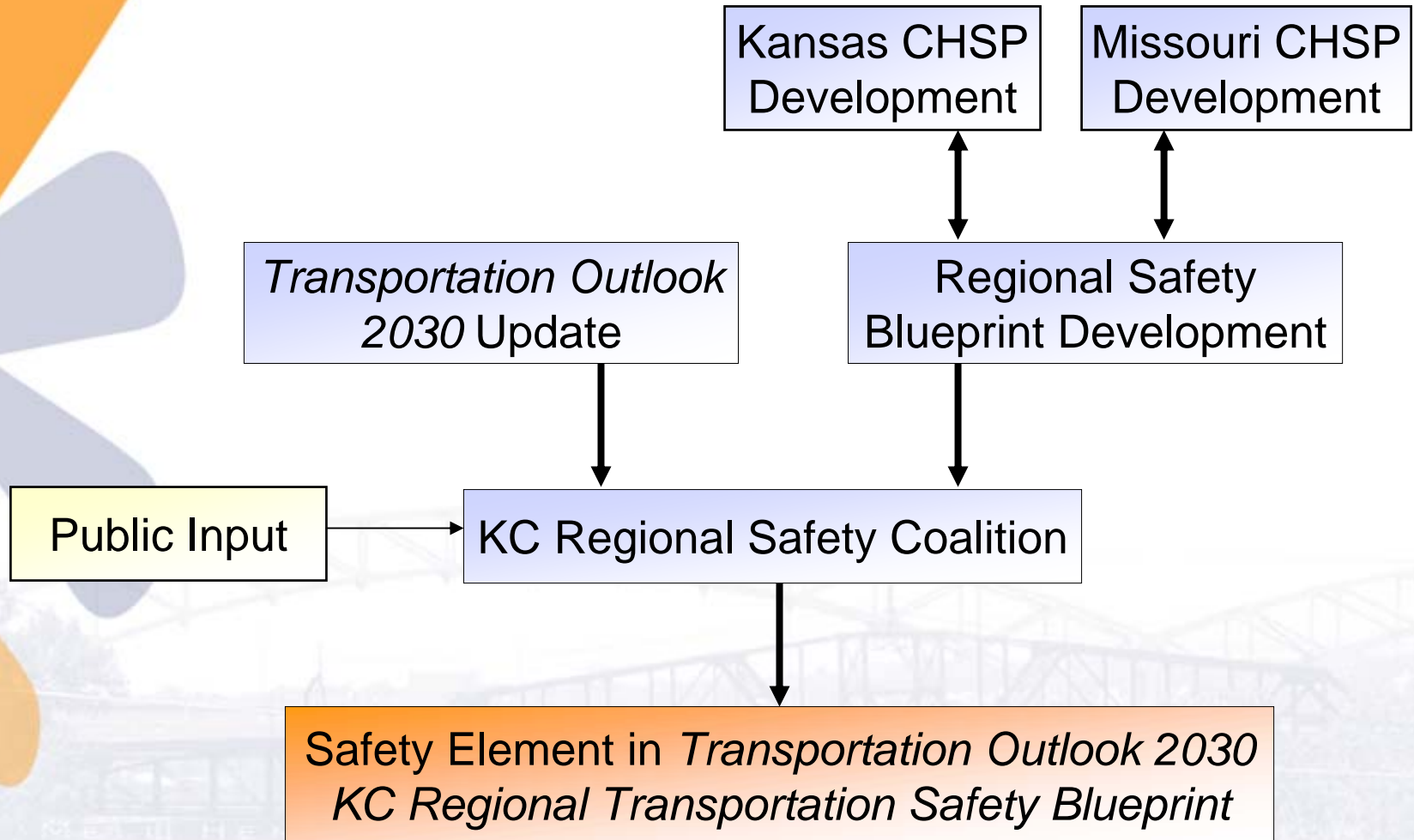
# *Missouri's Blueprint for Safer Roadways*

- Developed in 2004
  - “1,000 or fewer fatalities by 2008”
  - Emphasis areas
- Regional blueprint development
  - MoDOT 10 Highway Districts
  - Draft due February 2005



*Missouri Coalition  
for Roadway Safety*

# “One Regional Safety Plan”



# The Kansas City Region

- One Regional Blueprint
- One Regional Coalition
- One “C” Effort:  
Continuing, Cooperative,  
Comprehensive, Collaborative,  
and Coordinated Effort



# Contact Information

Michael Briggs

MARC

(816) 474-4240

[mbriggs@marc.org](mailto:mbriggs@marc.org)

[www.marc.org/transportation/safety](http://www.marc.org/transportation/safety)

Randy Johnson

MoDOT District 4

(816) 622-0321

[Randy.Johnson@modot.mo.gov](mailto:Randy.Johnson@modot.mo.gov)