

**G2U****GOVERNMENT-TO-UNIVERSITY  
NETWORK in Kansas City**

## Regional Coalition Summit

Thursday, Sept. 28, 2023

KU Edwards Campus – BEST Conference Center

**1:00 p.m. Check-in and Networking**

**1:30 p.m. Welcome — G2U Steering Committee Co-chairs**

**Carolyn McKnight**, *university co-chair, senior director of community engagement and business development, University of Kansas*

**Susan Sherman**, *government co-chair, deputy city manager, City of Olathe, KS*

**Strengthening the Talent Pipeline into Government: An Urgent National Priority**

**Sara Mogulescu**, *president, The Volcker Alliance*

**1:40 p.m. G2U in Review**

**Carolyn McKnight and Susan Sherman**

The G2U Steering Committee co-chairs will provide an overview of G2U priorities and accomplishments since the last regional summit.

**1:55 p.m. The Workforce Imperative: Forecasting Trends in Public Sector Employment**

**Frank Lenk**, *director of research services, Mid-America Regional Council*

Learn the latest labor statistics about public sector employment in our region. What are the current and future demands for talent to meet pressing social and political challenges? What are the implications for our government institutions and, in turn, our communities, if labor challenges are not addressed?

**2:30 p.m. Table Conversations**

*Introduced by Lukas Parrish, graduate management intern, Mid-America Regional Council*

Participants will engage in facilitated small group conversations at tables with university and government partners. Facilitators at each table will report out on conversations through PolLEV to capture input from the audience.

**3:00 p.m. Break**

---

3:15 p.m.

## Breakout Sessions

Participants pre-registered for one of three breakout sessions to attend from the options below.

### Breakout Sessions:

1. **Talent Connections Toolkit: Building and Sustaining Partnerships Between Government Employers and Higher Education** — Learn more about this great new resource and how to apply it to improve campus recruitment for government jobs. Panelists from the toolkit development team will share their insights on how the toolkit can help respond to recruitment challenges they identified in the stakeholder engagement process.

Room: BEST Conference Center

Moderator: **Beth Heslowitz**, *G2U talent connections project manager, MARC*, and **Lukas Parrish**, *graduate management intern, MARC*

Panelists:

- **Susan Sherman**, *G2U government co-chair, deputy city manager, City of Olathe, KS*
- **Goldie Gildehaus**, *employer relations assistant director, University of Missouri-Kansas City*
- **Danielle Frideres**, *career services coordinator, Kansas City Kansas Community College*
- **LaToya Black**, *human resources manager (talent acquisition), City of Kansas City, MO*

2. **Creative Approaches to Upskilling** — In an increasingly competitive job market, how can we develop and retain current public sector employees? Learn about three case studies of successful partnerships between government and higher education to improve opportunities for today's public workforce.

Room: BEST 215

Moderator: **Erika Vega**, *program manager, U.S. Office of Personnel Management*

Panelists:

- **Gary Kerr**, *associate vice president of strategic alliances and military/veterans affairs, Park University*
- **Marilu Goodyear**, *interim director, School of Public Affairs and Administration, University of Kansas*
- **Sandy Johnson**, *business solutions partner, Johnson County Community College*

3. **Broadening Recruitment for Public Service Careers** — Governments in our region have historically done well building relationships with public administration programs and similar fields to recruit students who are trained for government service. How can we expand recruitment for other public service disciplines: industrial technicians/building maintenance, construction management/public works, finance, accounting, engineering, IT, etc.?

Room: BEST 225

Moderator: **Becky Stuteville**, *assistant dean of academic affairs, K-State Olathe*

Panelists:

- **Tim DeWeese**, *director, Johnson County Mental Health, Johnson County, KS*
- **Ernestor De La Rosa**, *chief diversity, equity and inclusion officer, City of Topeka, KS*
- **Kelly Postlewait**, *assistant city manager, City of Kansas City, MO*

4:30 p.m.

## Networking Reception

---

---

## Presenter Information

**LaToya Black**, human resources manager (talent acquisition), City of Kansas City, MO — LaToya's journey with the city began in 2005 as a municipal management trainee in the recruitment division of human resources. She advanced from human resources specialist to senior human resources specialist. Later, she ventured into the technical realm of human resources as a senior human resources information systems analyst, playing a key role in implementing new functionalities within human resources systems. In early 2022, she assumed the role of talent acquisition manager.



**Ernestor De La Rosa**, chief diversity, equity and inclusion officer, City of Topeka, KS — Ernestor currently serves as the City of Topeka's first chief diversity equity and inclusion officer. Under this role, Ernestor also oversees the human resources and community engagement departments. Governor Laura Kelly appointed Ernestor to serve on the Kansas Hispanic & Latino-American Affairs Commission and the Kansas Racial Equity and Justice Commission. Ernestor graduated from Wichita State University in 2014 with a master's in public administration.



**Tim DeWeese**, director, Johnson County Mental Health, Johnson County, KS — Tim is the director of Johnson County Mental Health Center. He holds a Bachelor of Science in psychology from Missouri Southern State University and a master's of social work administration from the University of Kansas. He is a licensed mental health professional in Kansas and has over 30 years of experience in community mental health, where he has worked in various capacities. Tim also served more than 10 years as a commissioned officer in the Army Reserve and National Guard.



**Danielle Frideres**, career services coordinator, Kansas City Kansas Community College — Danielle Frideres is currently the career services coordinator for Kansas City Kansas Community College. She began her career in human resources and has spent the last 14 years in higher education, in both career services and academic advising. Her educational background is in organizational communication and business administration.



**Goldie Gildehaus**, employer relations assistant director, University of Missouri-Kansas City — Goldie Gildehaus has worked in higher education throughout her career with a focus on student leadership development and experiential and work-based learning programs. Currently, she is developing an on-campus internship program and works with public and private sector organizations to expand their on-campus recruitment strategies to connect and recruit Roos for internships and full-time positions.



**Marilu Goodyear**, interim director, School of Public Affairs and Administration, University of Kansas — Dr. Goodyear's work focuses on organizational analysis, organizational change, managing information and technology, and public management. Dr. Goodyear is a fellow of the National Academy of Public Administration and has served as a consultant to many universities and federal agencies. During the 2011-2012 year, she served as chair of the KU Office of the Provost Change Facilitators Committee. Formally, she held the position of vice provost for information services and chief Information officer at the university in which she led all campus-wide information technology and library services.

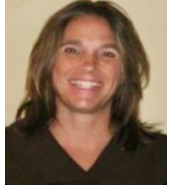


**Beth Heslowitz**, workforce development program director, Mid-America Regional Council — Beth Heslowitz, MARC's workforce development program director, convenes workforce stakeholders and directed a federal workforce grant. As part of the Government-to-University (G2U) initiative, she led the creation of a toolkit that fosters relationships between government employers and higher education, promoting public sector careers among new graduates.



---

**Sandy Johnson**, business solutions partner, Johnson County Community College — Sandy is a 30 year sales professional who collaborates with companies to implement strategies for increasing employee retention and engagement. Known for fostering excellent partnerships, she develops innovative ways for addressing today's workforce issues.



**Gary Kerr**, associate vice president of strategic alliances and military/veterans affairs, Park University — Gary is responsible for supporting the use of VA and tuition assistance educational benefits, developing programs, and managing transition and other resources to support over 5,000 military and veteran students located on 40 campuses across the nation. Gary is a retired army lieutenant colonel with over 23 years of service as an armor cavalry officer. During his career, he served in a variety of command and staff leadership positions. In his last assignment he served as professor and chair of the department of military science and leadership at the University of Missouri. He holds a Bachelor of Arts in History from Ohio State University and a Master of Science in adult education from Kansas State University.



**Frank Lenk**, director of research services, Mid-America Regional Council — Frank is director of research services for the Mid-America Regional Council, where he has worked for the past 44 years. Frank specializes in using a variety of technical tools to help understand social and economic issues. He has authored or co-authored numerous reports on the Kansas City area economy, including the workforce needs of the region's global design industry, the skilled trades, the tech sector and the public sector. A life-long resident of the Kansas City area, Frank earned his bachelor's and master's degrees in economics from Stanford University in 1978 and 1979 respectively. He obtained his interdisciplinary Ph.D. in Economics and Social Sciences from UMKC in 2015.



**Carolyn McKnight**, senior director of community engagement and business development, University of Kansas — Carolyn P. McKnight provides oversight for KU external relations in service of the promotion of research, credit, and non-credit programs. Carolyn also directs the KU Edwards campus advisory board, comprised of executive members, a workforce development advisory board with senior-level human resource professionals and six academic boards. In addition to her engagement work, she works on strategic initiatives for the university.



**Sara Mogulescu**, president, The Volcker Alliance — Sara Mogulescu was appointed president of the Volcker Alliance in January 2022. She has dedicated her career to the civic sector and has established an expansive record of working with leaders of public agencies, national foundations, and community organizations to achieve impact and implement change. She is a nationally recognized expert in program design, nonprofit management strategy, and innovation in city government. She holds a bachelor's in economics and government from Wesleyan University and a juris doctorate from the New York University School of Law.



**Lukas Parrish**, graduate management intern, Mid-America Regional Council — Lukas currently attends the University of Missouri-Columbia where he is in his final year of its accelerated Master of Public Affairs (MPA) program. Prior to his time with MARC, he has served as a legal assistant, legislative intern and graduate research assistant. Lukas was recently named a 2023 recipient of the Mel Carnahan Award for his outstanding dedication to public service. This past spring, he graduated from the University of Missouri-Columbia with a bachelor of journalism and a Bachelor of Arts in political science.





---

**Kelly Postlewait**, assistant city manager, City of Kansas City, MO — Kelly serves the city of Kansas City, Missouri's 4,500 employees as an assistant city manager. She joined the city of Kansas City, Missouri in 2016 as an attorney as a litigator. Prior to joining the city of Kansas City, Missouri she served as deputy chief of staff for New York State Assemblymember Jonathan Bing and practiced law in the private sector. Kelly is a certified workplace mediator and conflict resolution trainer and strives to navigate issues with a focus on solutions that are win-win. Throughout her career she has spearheaded many initiatives to promote diversity and equity in the workplace and is a believer in power growth through training and education.



**Susan Sherman**, deputy city manager, City of Olathe, KS — As deputy city manager, Susan is responsible for the day to day operations of the four areas of Olathe's 2040 Strategic Plan which are economy, exceptional services, infrastructure and quality of life. Susan has served in Olathe since 1989. Susan earned a bachelor's degree from Ohio Wesleyan University and a Master's in Public Administration from the University of Kansas. Susan has been serving on the Kansas City Government-to-University Steering Committee since its inception and was named a co-chair of the committee in August 2023. Susan and Fred live in Olathe, Kansas, and have two grown children.



**Becky Stuteville**, assistant dean of academic affairs, K-State Olathe — Becky Stuteville is the assistant dean of academic affairs, teaching associate professor in the school of applied and interdisciplinary studies, and director of the applied biosciences master's degree program. Becky is responsible for developing and delivering new academic programs and initiatives. She also improves the administrative policies and procedures related to the graduate-level academic programs at the campus. In addition to her guidance on academic programs, Becky teaches, mentors and advises students seeking their master's degree. She joined K-State Olathe in December 2017.



**Erika Vega**, program manager, U.S. Office of Personnel Management — Erika serves as the USAJOBS program manager. USAJOBS connects job seekers with federal employment opportunities across the United States and around the world. As the federal government's official employment site, USAJOBS helps recruit and retain a world-class government workforce for the American people.



---

## G2U Steering Committee – Members and Alternates

Nate Addington  
Erik Bergrud  
Angie Besendorfer Martin  
Matthew Bice  
Damien Boley  
Karla Bruntzel  
Teri Casey  
Bridgette Cobbins  
Stuart Day  
Myles Gartland  
David Gaston  
Cemal Gungor  
Pamela Hann  
Larry Hisle  
Laurel Hogue  
Lael Keiser

Gary Kerr  
Shelley Kneuvean  
Jeanie Lauer  
Kara Lowe  
Carolyn McKnight  
Davlon Miller  
Clint Robinson  
Susan Sherman  
Christopher Shobe  
Robin Smith  
Rebekkah Stuteville  
Leigh Anne Taylor Knight  
Erika Vega  
Mitchell Walker  
Mark White  
Hannes Zacharias

## G2U Regional Summit Planning Committee

Carmellya Anderson  
Raymart Dinglas  
Mary Dykmann  
William Fabian  
Beth Heslowitz  
Larry Hisle

Shelley Kneuvean  
Lauren Palmer  
Lukas Parrish  
Anna Wallman  
Hannes Zacharias

**Thank you to our sponsors, presenters, G2U steering committee and G2U regional summit planning committee for their commitment to the initiative.**

---