

Age of Celebration



AGING SERVICES FAIR

Presented by
Optum

MARC
MID-AMERICA REGIONAL COUNCIL

May 30, 2025

AARP
Kansas City

ArchWell
HEALTH

CenterWell
Senior Primary Care

Devoted
HEALTH PLANS

GIVING
HOME HEALTH CARE

Humana

IVANHOE
NEIGHBORHOOD COUNCIL

Medicare
Simplified KC



the Photo Bus

usbank

This event is supported in part by the City of Kansas City, Missouri Neighborhood Tourist Development Fund.

Welcome to Age of Celebration!

Please review all of the program information for the best experience.



Event tips

- **Outdoor activities**

Experience 54 community resource vendors, yard games, digital photobooth, food trucks and live music! See *the outdoor map on page 4 of this program*.

Each attendee will receive one ticket at check-in. You can use your ticket at one of the food trucks for a small plate and non-alcoholic beverage.

- **Indoor activities**

You'll find 35 community resource vendors and workshops on healthy aging inside the community center. See *the indoor map on page 6 of this program*.

- **Event passport**

You'll find an Event Passport on pages 13-14 of this program. Visit 20 resource vendors and have them sign your sheet, then submit it to be eligible for a raffle drawing. Prizes will be drawn after the event and we will contact you if you are a winner.

Composting

To minimize event waste, we have compost bins from KC Can Compost available for cups, plates, napkins, cutlery and food scraps. All serving items provided at the event can go into the orange compost bins. If you have trash or recycling that you brought in with you, please do not place those items in the compost bins — trash and recycling bins will be available.

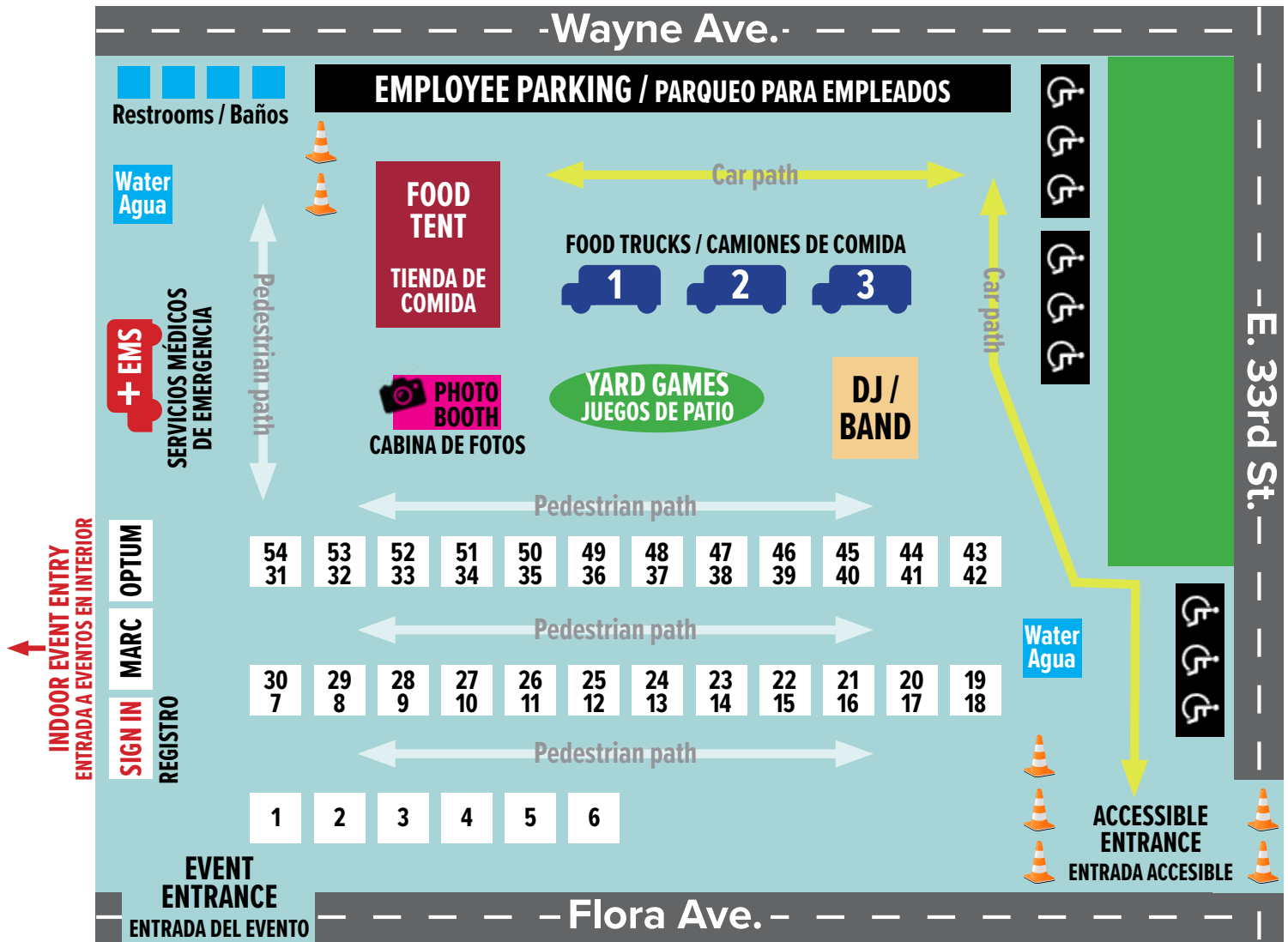
Emergency procedures

- In the event there is a dangerous weather situation, please go inside to the multipurpose room or auditorium.
- If you have a health emergency, please call 9-1-1 and then find a vendor or volunteer to notify the onsite EMS unit.
- In the event of criminal activity, please call 9-1-1 and then find a vendor or volunteer to notify the onsite security unit.

WORKSHOP SCHEDULE

Time	Auditorium	Ruth Ann Harper Room
11 a.m.	Reimagining and Reinventing Yourself as You Age, <i>Dr. Lee Norman, Optum</i>	Beneficiary Deeds Workshop <i>Maura Weber, Legal Aid</i>
11:30 a.m.	Caregiving: Creating the Care You Want — <i>Diane Hall, AARP — Kansas City</i>	Stand Sit and Be Fit (adaptive exercise), <i>Optum</i>
12 p.m.	Value-Based Healthcare <i>Peter Pulliam, Centerwell</i>	Identifying Common Scams and Fraud, <i>AARP</i>
12:30 p.m.	Medicare 101, <i>Optum</i>	Advanced Care Directives, <i>Odessa Sawyer, Center for Practical Bioethics</i>
1:30 p.m.	Caregiving: Creating the Care You Want — <i>Diane Hall, AARP Kansas City</i>	Chair Yoga, <i>Optum</i>
2 p.m.	Value-Based Healthcare <i>Peter Pulliam, Centerwell</i>	Beneficiary Deeds Workshop <i>Maura Weber, Legal Aid</i>

OUTDOOR VENDOR MAP / MAPA DE PROVEEDORES AL AIRE LIBRE

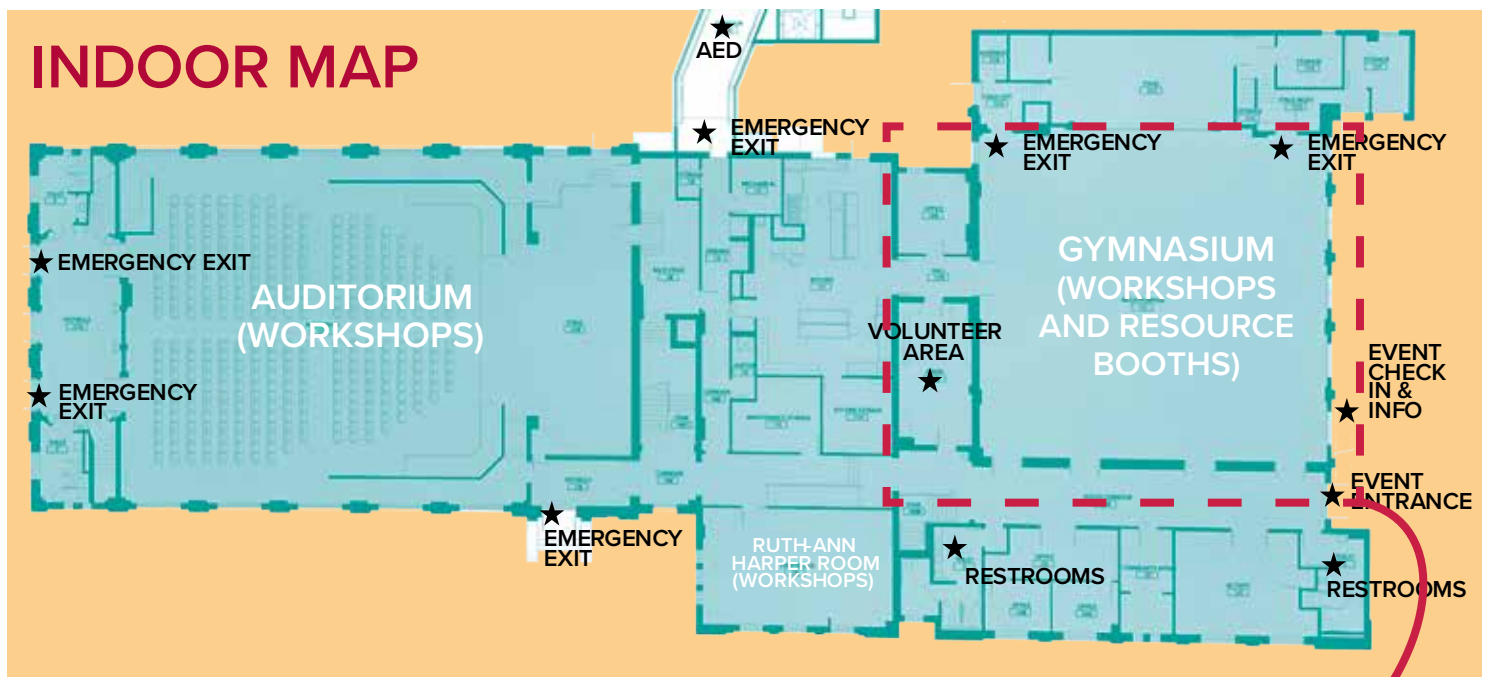


OUTDOOR VENDORS

- 988/Mobile Crisis Collaborative
- Aetna
- Alliance Personal Care
- Bishop Sullivan Center
- CIRCUL KC
- Guardant Health — Oncology Screening
- Center for Medicare and Medicaid Services
- Community Action Agency of Greater Kansas City
- Eitas
- Flourish: A Furniture Bank
- Gilda's Club Kansas City
- Grandparents Support Network KC
- CAPABLE — North Kansas City Hospital
- Habitat for Humanity of Kansas City
- Hillcrest Traditional Housing —Volunteer Program
- Home Instead, Inc.
- Hope Family Care Center
- Independence, Missouri, Health Department
- Kansas City Hospice and Palliative Care
- Kansas City Symphony
- Kansas City, Missouri, Parks and Recreation
- KC Lift and Elevator
- Lead to Read KC

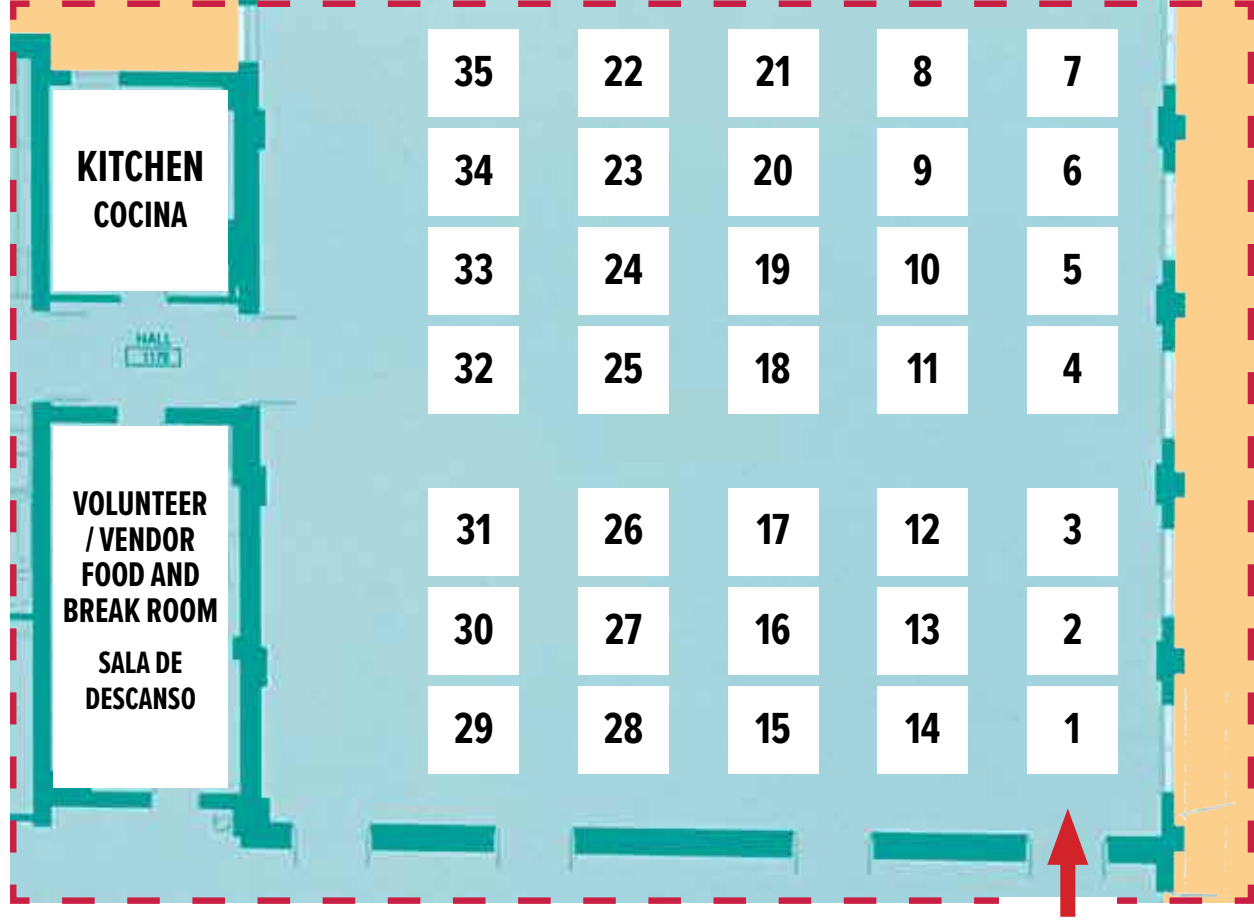
OUTDOOR VENDORS, cont.

24. League of Women Voters — Kansas City
25. Legal Aid of Western Missouri
26. Metropolitan Lutheran Ministry
27. Saint Luke's Bishop Spencer Place
28. Mid-Continent Public Library — Library-by-Mail
29. Missouri Assistive Technology
30. Missouri Housing Development Corporation
31. Missouri Kidney Program
32. Missouri SHIP
33. Missouri Department of Health and Senior Services, Division of Senior and Disability Services
34. Ivanhoe Neighborhood Association
35. Paraclete Manor Apartments
36. Lincoln University Cooperative Extension / Paula J. Carter Center on Health and Aging
37. Oak Street Health
38. Phoenix Home Care and Hospice
39. Reclamation Clubhouse, Pathway To Hope, Inc.
40. Foster Grandparents Program of Jackson, Clay and Platte Counties
41. Resort Lifestyle Communities
42. a. MARC Early Learning / Head Start
b. MARC AirQ Air Quality program
43. Sandwiched KC
44. Shalom Hospice
45. Temple Heights Manor
46. The Fountains at Greenbriar
47. The Love Law Group
48. The Salvation Army
49. Centerwell Senior Primary Care
50. Uncover KC
51. University Health / Truman Medical Center
52. Welcome Wellness Health Education Resource Center
53. Wolfpack Wellness
54. MU Extension



NOTE: See Indoor Vendor booth details on the next page.

RESOURCE BOOTHS LOCATED IN GYMNASIUM



VENDOR HALL ENTRY
ENTRADA AL SALÓN DE VENDEDORES

INDOOR VENDORS

- | | | |
|---|--|----------------------------------|
| 1. Swope Health Services | 12. Kansas City, Missouri, Health Department | 25. Vendor space |
| 2. University of Kansas Medical Center – Landon Center on Aging | 13. PACE KC | 26. Giving Home Health Care |
| 3. TVG Medulla LLC / Chiro One Wellness Centers | 14. Kansas City Metro Senior Softball League | 27. Devoted Health Plans |
| 4. AccessKC | 15. Parkinson’s Foundation | 28. Medicare Simplified KC |
| 5. Beacon Mental Health – Older Adult Program | 16. Rebuilding Together Kansas City | 29. Heart to Heart International |
| 6. Black Healthcare Coalition | 17. KC End of Life | 30. Heart to Heart International |
| 7. KC Shepherd’s Center | 18. Rings of Care | 31. Heart to Heart International |
| 8. Kanbe’s Markets | 19. RES-Q-YOU * RES-Q-HER | 32. Vendor space |
| 9. Kansas City Public Library – At Home Services | 20. Social Security Administration | 33. North Kansas City Hospital |
| 10. AARP – Kansas City | 21. CaptionCall by Sorenson | 34. North Kansas City Hospital |
| 11. Kansas Relay / T-Mobile Accessibility | 22. Humana | 35. North Kansas City Hospital |
| | 23. Archwell Health | |
| | 24. U.S. Bank | |

RESOURCE VENDORS

Vendor	Description	Phone	Website
988/Mobile Crisis Collaborative	988 Suicide and Crisis Line provides free, private support 24/7	988	www.marc.org/committees/988-mobile-crisis-response-steering-committee
AARP — Kansas City	Resources and activities for seniors and caregivers	866-389-5627	
AARP — Missouri	Workforce development for seniors	816-471-1884	https://states.aarp.org/missouri
AccessKC	Basic health services for individuals with low incomes	816-276-7517	www.AccessKC.org
Aetna	Medicare plan provider		www.Aetna.com
Alliance Personal Care	In-home personal care	816-743-0113	www.alliancehomehealth.com
Archwell Health	Primary care provider	816-209-1237	www.archwellhealth.com
Beacon Mental Health — Older Adult Program	Mental health, substance use treatment, prevention and wellness activities	816-468-0400	www.beaconmentalhealth.org
Bishop Sullivan Center	Food and employment support	816-561-8515	www.bishopsullivan.org
Black Healthcare Coalition	Blood pressure screenings, glucose screenings and health literature	816-444-9600	www.bhccckc.org/home
CAPABLE — North Kansas City Hospital	Home-based aging in place program	816-691-5394	www.nkch.org/community/outreach/capable
CaptionCall by Sorenson	Caption phone services for individuals who are deaf	877-557-2227	www.captioncall.com
Centers for Medicare and Medicaid Services	Medicare and Medicaid information		www.medicare.gov
Centerwell Senior Primary Care	Primary care provider	816-312-53023	www.centerwellprimarycare.com
CIRCUL KC	Senior volunteers and educators	816-703-7815	www.thecirculkc.org

Vendor	Description	Phone	Website
Community Action Agency of Greater Kansas City	Energy efficiency, health and safety home improvements	816-358-6868	www.caagkc.org
Devoted Health Plans	Medicare insurance provider	800-363-0723	www.devoted.com
Eitas	Training, transportation and support coordination for people with disabilities	816-363-1755	www.eitas.org
Flourish: A Furniture Bank	Collecting, repairing, and donating furniture and home essentials	816-946-8600	www.FlourishFurnitureBank.org
Foster Grandparents Program of Jackson, Clay and Platte Counties	Volunteer opportunities with youth with special and exceptional needs	816-931-4751	www.rs3101.org
Gilda's Club Kansas City	Support for people impacted by cancer	816-531-5444	www.gildasclubkc.org
Giving Home Health Care	In-home care for individuals impacted by their work in nuclear energy	816-654-6005	www.givinghomehealthcare.com
Grandparents Support Network KC	Mutual aid group for grandparents	816-235-2490	www.community.umkc.edu/engagements/grandparents-support-network-kc
Guardant Health — Oncology Screening	Colorectal cancer screening provided by Medicare	855-722-7335	www.shieldcancerscreen.com/order-shield
Habitat for Humanity of Kansas City	Affordable housing solutions, home repair program	816-924-1096	www.habitatkc.org
Heart to Heart International	Free point-of-care A1C testing and offering hygiene kits	913-764-5200	www.hearttoheart.org
Hillcrest Transitional Housing — Volunteer Program	Volunteer opportunities to alleviate homelessness	816-272-1976	www.hillcrestkc.org
Home Instead, Inc.	Professional caregiving services	816-753-3700	www.homeinstead.com
Hope Family Care Center	Blood pressure information	816-861-6500	www.HFFCC.org

Vendor	Description	Phone	Website
Humana	Medicare insurance provider		www.humana.com
Independence, Missouri, Health Department	Mental health, emergency preparedness, disease prevention and substance use resources	816-325-7182	www.independencemo.gov/government/city-departments/health
Ivanhoe Neighborhood Council	Programming for youth, families and seniors	816-921-6611	www.incthrives.org
Kanbe's Markets	Resource information on fresh produce availability	816-359-3622	www.kanbesmarkets.org
Kansas City Hospice and Palliative Care	Palliative and hospice services	816-363-2600	www.KCHospice.org
Kansas City Metro Senior Softball League	Recreation and fellowship for seniors		www.kcseniorsoftball.org
Kansas City Public Library — At Home Services	Library services, including at home services	816-701-3400	www.kclibrary.org
Kansas City Symphony	Performing arts information	816-471-0400	www.kcsymphony.org
Kansas City, Missouri, Health Department	Public health outreach and education	816-513-1313	www.kcmo.gov/city-hall/departments/health
Kansas Relay / T-Mobile Acessibility	Assistive devices for people who are deaf and/or have speech disabilities	800-676-3777	www.kansasrelay.com and www.tmobileaccess.com
KC End of Life	End of life doula professionals	816-797-1687	www.kcendoflife.org
KC Lift and Elevator	Full service accessibility equipment (stair, elevators, patient and wheelchair lifts)	913-327-5557	www.kclift.com
KC Shepherd's Center	Social programs, meals on wheels, health programs	816-444-1121	www.kcshepherdscenter.org
Kansas City, Missouri, Parks and Recreation	Community Center and recreational services	816-513-7500	www.kcparks.org

Vendor	Description	Phone	Website
Landon Center on Aging	Free fitness and educational programming	913-588-0798	www.kumc.edu/research/landon-center-on-aging.html
Lead to Read KC	Volunteer opportunities to read with students and collect book donations	816-543-7759	www.leadtoreadkc.org
League of Women Voters — Kansas City	Voter registration and voter education	816-464-1800	www.lwvkc.org
Legal Aid of Western Missouri	Free civil legal services	816-474-6750	www.LAWMO.org
Library-by-Mail	General library information, Library-By-Mail program	816-503-4175	www.mymcpl.org
Lincoln University Cooperative Extension / Paula J. Carter Center on Health and Aging	Literature on health issues for age 55 plus	573-681-5530	www.lincolnu.edu
Medicare Simplified KC	Medicare insurance provider	816-701-6661	www.medicaresimplifiedkc.com
Metro Lutheran Ministry	Minor home repair program, weatherization kits	816-931-0027	www.mlmkc.org
Mid-America Regional Council Aging and Adult Services	Supportive services for aging in place	816-421-4980	www.marc.org/aging
Mid-America Regional Council Air Quality	Information on clean air and protecting yourself from pollution	816-474-4240	www.AirqKC.org
Mid-America Regional Council Early Learning / Head Start	Early learning / Head Start information	816-474-4240	www.marc.org/early-learning
Missouri Assistive Technology	Medical assistance devices	816-655-6700	www.mo-at.org
Missouri Department of Health and Senior Services, Division of Senior and Disability Services	State unit on aging		www.health.mo.gov/abuse
Missouri Housing Development Corporation	Housing resources	816-759-6600	www.mhdc.com

Vendor	Description	Phone	Website
Missouri Kidney Program	Assistance for renal disease or kidney transplant patients	573-882-2506	www.mokp.org
Missouri SHIP	Medicare counseling and education	800-390-3330	www.missouriship.org
MU Extension – Senior Farmers Market Nutrition Program	Free farmers market vouchers for low-income seniors	573-884-5576	www.extension.missouri.edu/news/free-local-produce-for-low-income-seniors
North Kansas City Hospital – Community Health and Wellness	Grip strength, body composition scale, A1C and cholesterol checks	816-691-2000	www.nkch.org/community/impact/community-health-needs
Oak Street Health	Primary care provider	816-209-6906	www.oakstreethealth.com
Optum	Primary care, 55+ community centers		www.optum.com/en/care/locations/kansas/optum-kansas/community-centers.html
PACE KC	All-inclusive care for seniors in Jackson County, Missouri	816-321-3299	www.pacekc.org
Paraclete Manor Apartments	Independent living for seniors	816-861-3829	www.paracletemanor.com
Parkinson's Foundation	Information and resources for people with Parkinson's and their caregivers	913-416-4098	www.Parkinson.org
Phoenix Home Care and Hospice	In-home medical and personal care services	816-373-7442	www.phoenixhomehc.com
Rebuilding Together Kansas City	Home safety modifications for those in need	816-781-8985	www.rebuildingtogetherkc.org/give2rtkc
Reclamation Clubhouse, Pathway To Hope, Inc.	Mental health support group	913-397-8552	www.pathwaytohope.org/what-we-do/clubhouse
Resort Lifestyle Communities	Senior living community	816-399-0732	www.rlcommunities.com
RES-Q-YOU * RES-Q-HER	Women's empowerment network	913-972-0791	
Rings of Care	Supports for informal family caregivers	816-797-1687	www.ringsofcare.org
Saint Luke's Bishop Spencer Place	Independent, assisted and memory care living	816-931-4277	www.bishopspencerplace.org

Vendor	Description	Phone	Website
Sandwiched KC	Caregiver support	816-472-9178	www.sandwichedkc.com
Shalom Hospice	Hospice medical service	816-272-8181	www.shalomhospicemo.com
Social Security Administration	Information on Social Security benefits	800-772-1213	www.ssa.gov
Swope Health Services	Medicaid enrollment	816-599-5654	www.swopehealth.org
Temple Heights Manor	Apartments for seniors 55 and older	816-358-9533	www.st-residential.com/2022/10/14/temple-heights-manor
The Fountains at Greenbriar	Independent Living Senior Community	816-257-5100	watermarkcommunities.com/our-communities/missouri/independence/the-fountains-at-greenbriar
The Love Law Group	Elder law, estate planning, probate	816-554-3330	www.lovelawgroup.com
The Salvation Army	HUD-funded senior living communities, food assistance, rent/utility assistance	816-421-0910	www.centralusa.salvationarmy.org/mokan
TVG Medulla LLC/ Chiro One Wellness Centers	Chiropractic care	855-424-4761	www.chiroone.com
U.S. Bank	Personal banking		www.usbank.com/index.html
Uncover KC	Volunteer opportunities	816-200-2553	www.uncoverkc.org
University Health / Truman Medical Center	Health resources, fall prevention, motor vehicle safety	816-404-1000	www.universityhealthkc.org
Welcome Wellness Health Education Resource Center	Health literacy, adaptable fitness programs	816-979-3090	www.wwherc.com
Wolfpack Wellness	Health insurance agency	913-730-7730	www.hwadvisors.org

Vendor passport, cont.

See instructions on reverse.

Kansas City Public Library — At Home Services	Kansas City Symphony	Kansas City, Missouri, Health Department	Kansas Relay / T-Mobile Accessibility	KC End of Life
KC Lift and Elevator	KC Shepherd's Center	Kansas City, Missouri, Parks and Recreation	Landon Center on Aging	Lead to Read KC
League of Women Voters — Kansas City	Legal Aid of Western Missouri	Library-by-Mail	Lincoln University Cooperative Extension / Paula J. Carter Center on Health and Aging	Medicare Simplified KC
Metropolitan Lutheran Ministry	Mid-America Regional Council Aging and Adult Services	Mid-America Regional Council Air Quality	Mid-America Regional Council Early Learning / Head Start	Missouri Assistive Technology
Missouri Dept of Health and Senior Services, Division of Senior and Disability Services	Missouri Housing Development Corporation	Missouri Kidney Program	Missouri SHIP	MU Extension — Senior Farmers Market Nutrition Program
North Kansas City Hospital — Community Health and Wellness	Oak Street Health	Optum	PACE KC	Paraclete Manor Apartments
Parkinson's Foundation	Phoenix Home Care and Hospice	Rebuilding Together Kansas City	Reclamation Clubhouse, Pathway To Hope, Inc.	Resort Lifestyle Communities
RES-Q-YOU * RES-Q-HER	Rings of Care	Saint Luke's Bishop Spencer Place	Sandwiched KC	Shalom Hospice
Social Security Administration	Swope Health Services	Temple Heights Manor	The Fountains at Greenbriar	The Love Law Group
The Salvation Army	TVG Medulla LLC/Chiro One Wellness Centers	U.S. Bank	Uncover KC	University Health / Truman Medical Center
Welcome Wellness Health Education Resource Center	Wolfpack Wellness			

Vendor Passport / Pasaporte de Vendedor

1. Visit at least 20 vendor booths. *Visita al menos 20 puestos de vendedores.*
2. Ask 20 vendors to initial in their square below. *Pide a 20 vendedores que firmen sus iniciales en su casilla de abajo.*
3. Remove this page and put it in the box at the information table to be entered into a prize drawing! *¡Retire esta página y colóquela en la caja de la mesa de información para participar en una rifa!*

Don't forget to fill in your name and phone number!

¡No olvides completar tu nombre y número de teléfono!

Name _____

Phone _____

988/Mobile Crisis Collaborative	AARP — Kansas City	AARP — Missouri	AccessKC	Aetna
Alliance Personal Care	Archwell Health	Beacon Mental Health — Older Adult Program	Bishop Sullivan Center	Black Healthcare Coalition
CAPABLE — North Kansas City Hospital	CaptionCall by Sorenson	Centers for Medicare and Medicaid Services	Centerwell Senior Primary Care	CIRCUL KC
Community Action Agency of Greater Kansas City	Devoted Health Plans	Eitas	Flourish: A Furniture Bank	Foster Grandparents Program of Jackson, Clay and Platte Counties
Gilda's Club Kansas City	Giving Home Health Care	Grandparents Support Network KC	Guardant Health — Oncology Screening	Habitat for Humanity of Kansas City
Heart to Heart International	Hillcrest Transitional Housing — Volunteer Program	Home Instead, Inc.	Hope Family Care Center	Humana
Independence, Missouri, Health Department	Ivanhoe Neighborhood Council	Kanbe's Markets	Kansas City Hospice and Palliative Care	Kansas City Metro Senior Softball League