

2020 CENSUS PROFILE

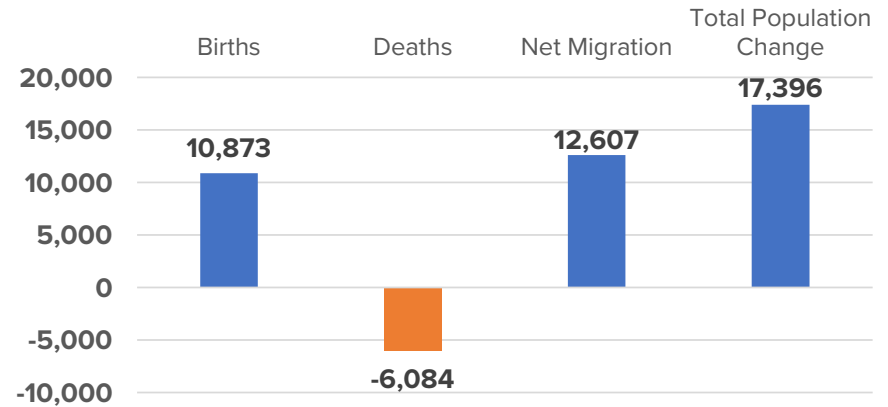
Platte County, Missouri

In 2020, Platte County, Missouri, was the sixth most populous county in the nine-county MARC Region with 106,718 persons. Representing 5% of the region's total residents, Platte County grew second fastest in the region, increasing its population by 14%.

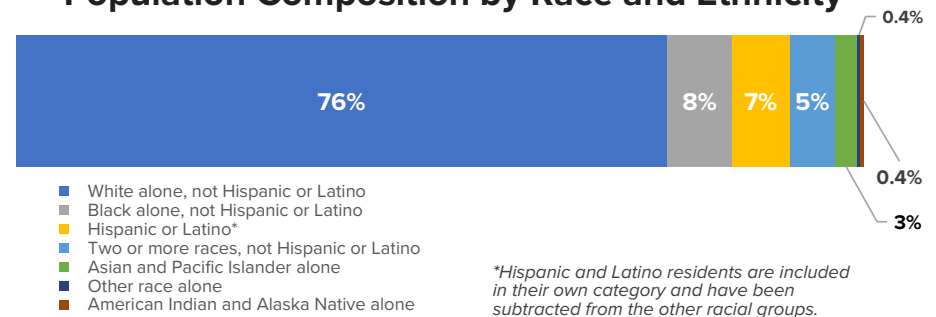
Platte County added 17,396 persons during the decade. This ranked fourth in the region and was due to both a natural increase (births over deaths) of 4,789 persons and a net in-migration of 12,607 persons. Population change by race and ethnicity mirrors the region's trend with most (64%) of the county's growth due to increases in persons of color. Persons of color saw their share of the county's population increase from 16% in 2010 to approximately 24% in 2020.

Unlike any other county in the region, though, white residents still accounted for the largest share of growth of any individual racial category. Among people of color, the largest increases in population were from individuals identifying as two or more races, Black alone and Hispanic.

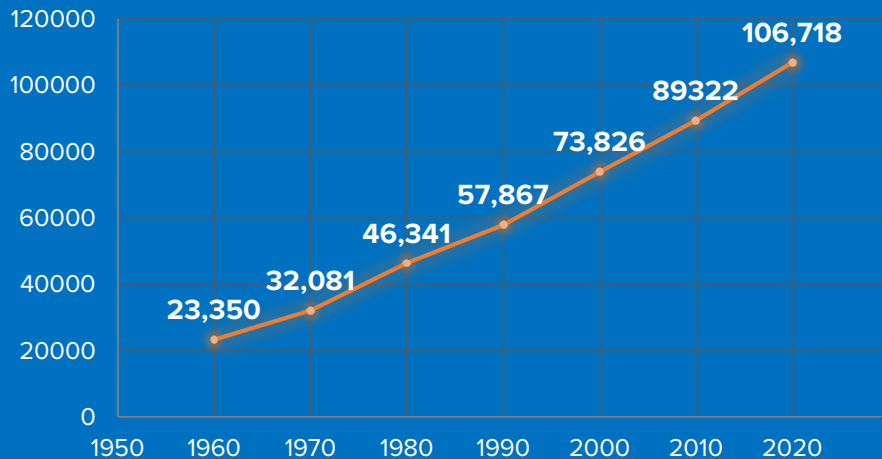
Components of Population Change, 2010–2020



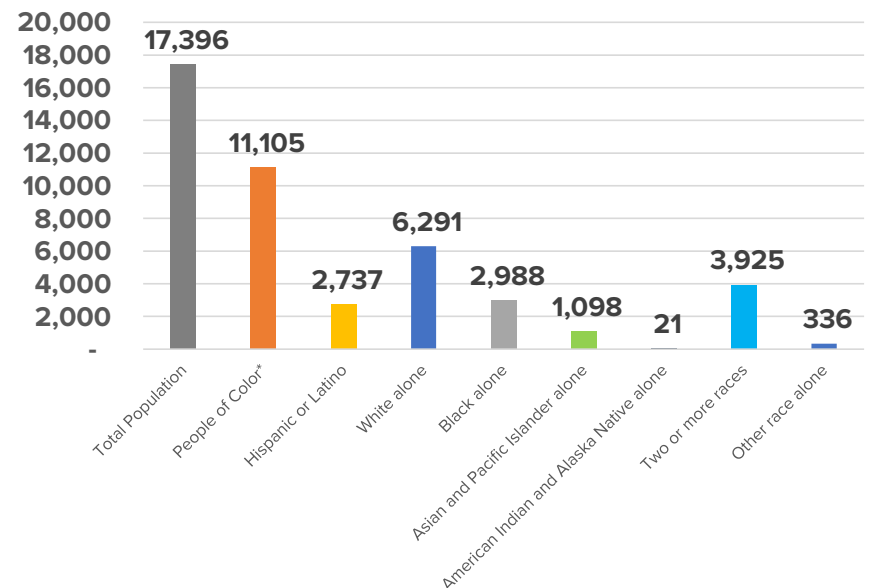
Population Composition by Race and Ethnicity



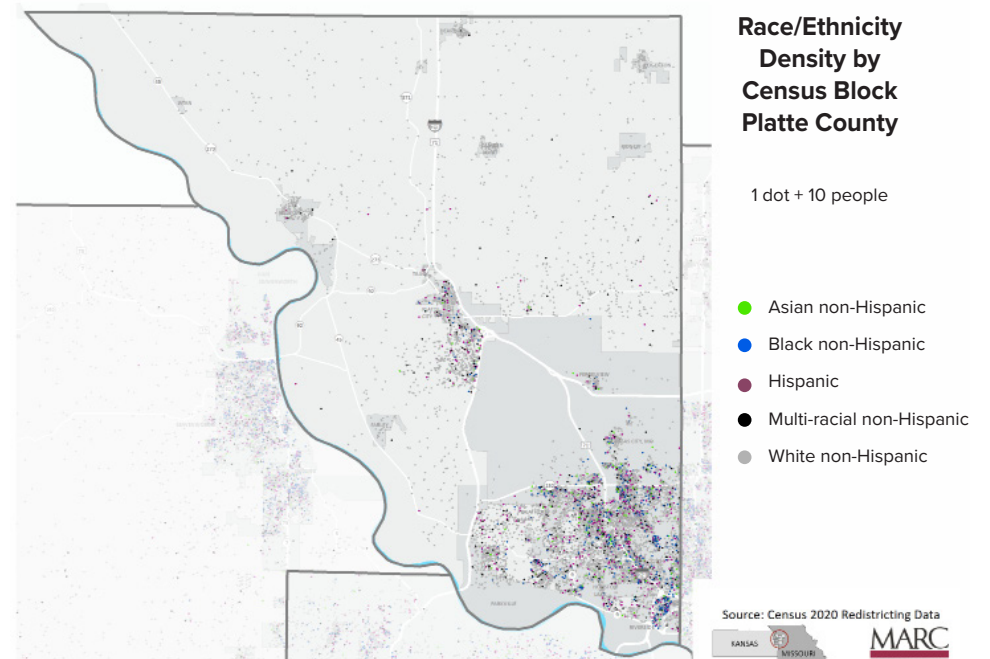
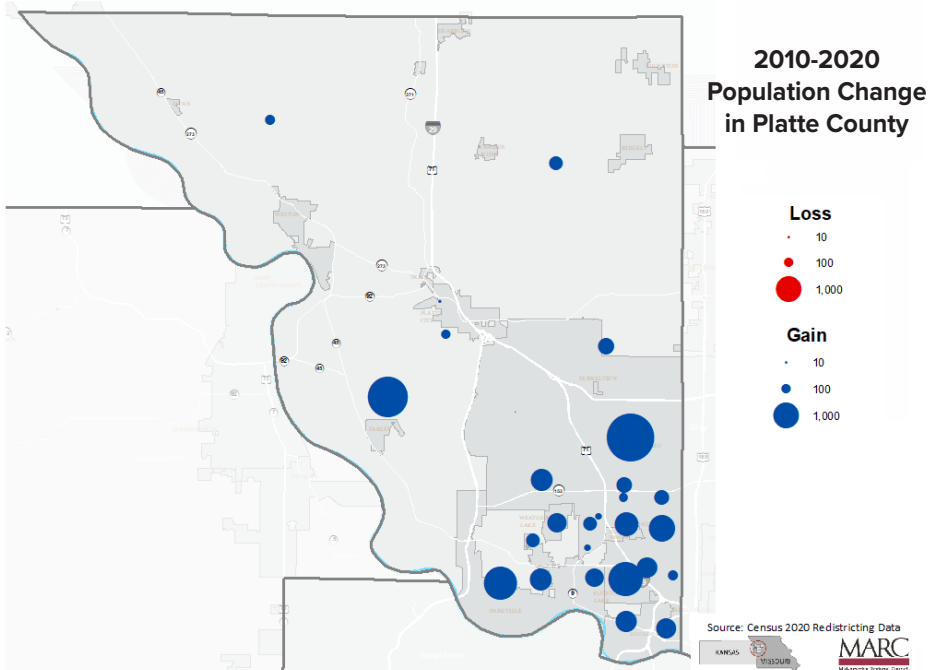
Platte County Total Population 1960 – 2020



Population Change, 2010–2020



Platte County, Missouri Population, Race/Ethnicity	2010 Census Population	2020 Census Population	Change, 2010-2020	Percent Change, 2010-2020	Share of 2010	Share of 2020	Difference in Share, 2010-2020
Total Population	89,322	106,718	17,396	19%	100%	100%	0%
Hispanic or Latino (of any race)	4,424	7,161	2,737	62%	5%	6.7%	1.8%
Not Hispanic or Latino	84,898	99,557	14,659	17%	95%	93.3%	-1.8%
White alone	75,135	81,426	6,291	8%	84%	76.3%	-7.8%
Black alone	5,147	8,135	2,988	58%	6%	7.6%	1.9%
Asian and Pacific Islander alone	2,318	3,416	1,098	47%	3%	3.2%	0.6%
American Indian and Alaska Native alone	370	391	21	6%	0%	0.4%	0.0%
Other race alone	123	459	336	273%	0%	0.4%	0.3%
Two or more races	1,805	5,730	3,925	217%	2%	5.4%	3.3%
People of Color*	14,187	25,292	11,105	78%	16%	23.7%	7.8%



* People of Color: Hispanic or Latino + Black alone + Asian and Pacific Islander alone + American Indian/Alaskan alone + Other race alone + Two or more races