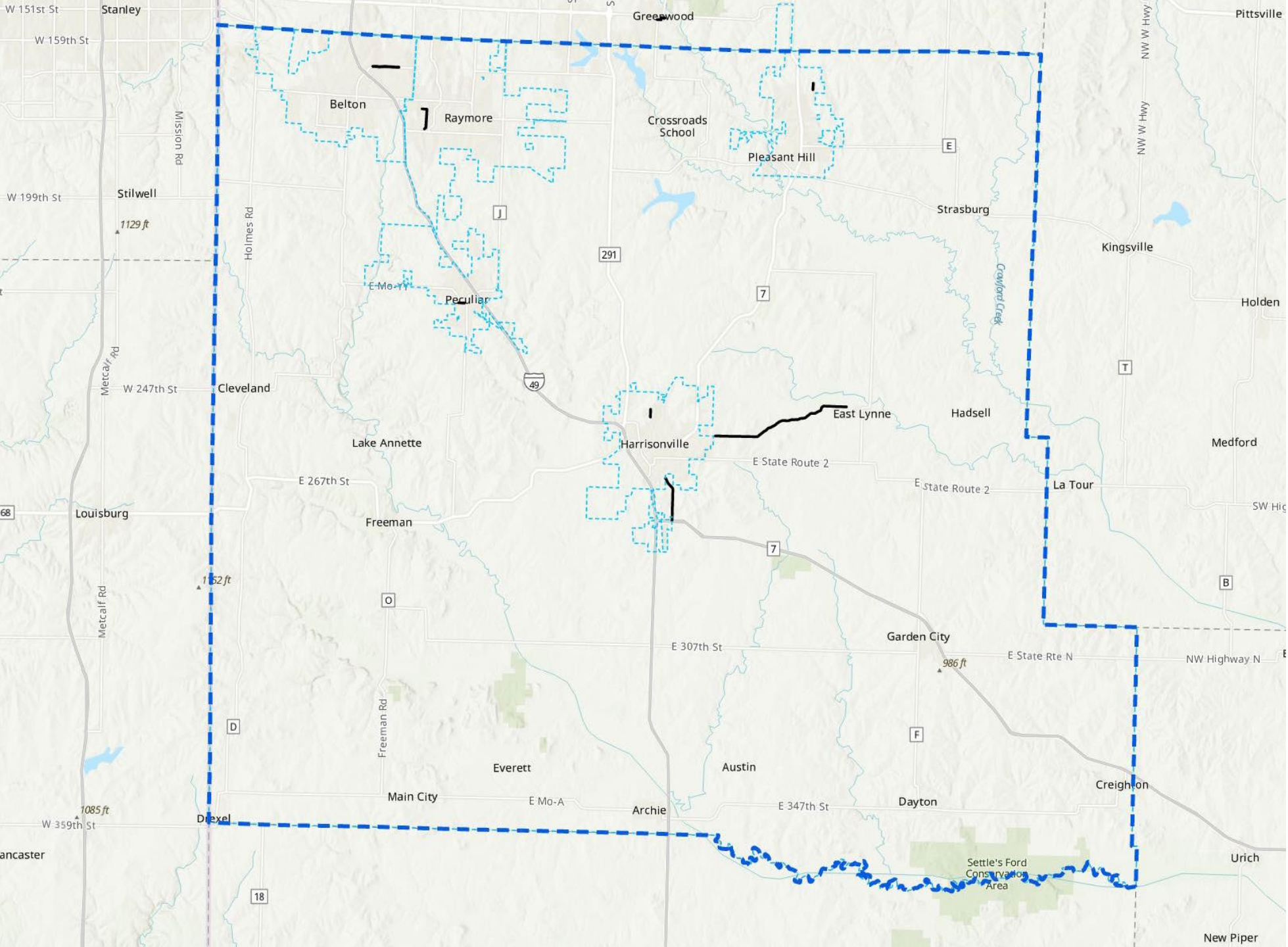


# RPM Program Update

- ▶ Work is focused on pavement maintenance
  - ▶ Asphalt mill & overlay (2")
  - ▶ Microsurfacing
  - ▶ Limited spot repair allowance
  - ▶ Pavement markings as needed
- ▶ Four bid packages to group work by county
  - (Cass, Clay, Jackson, Platte)

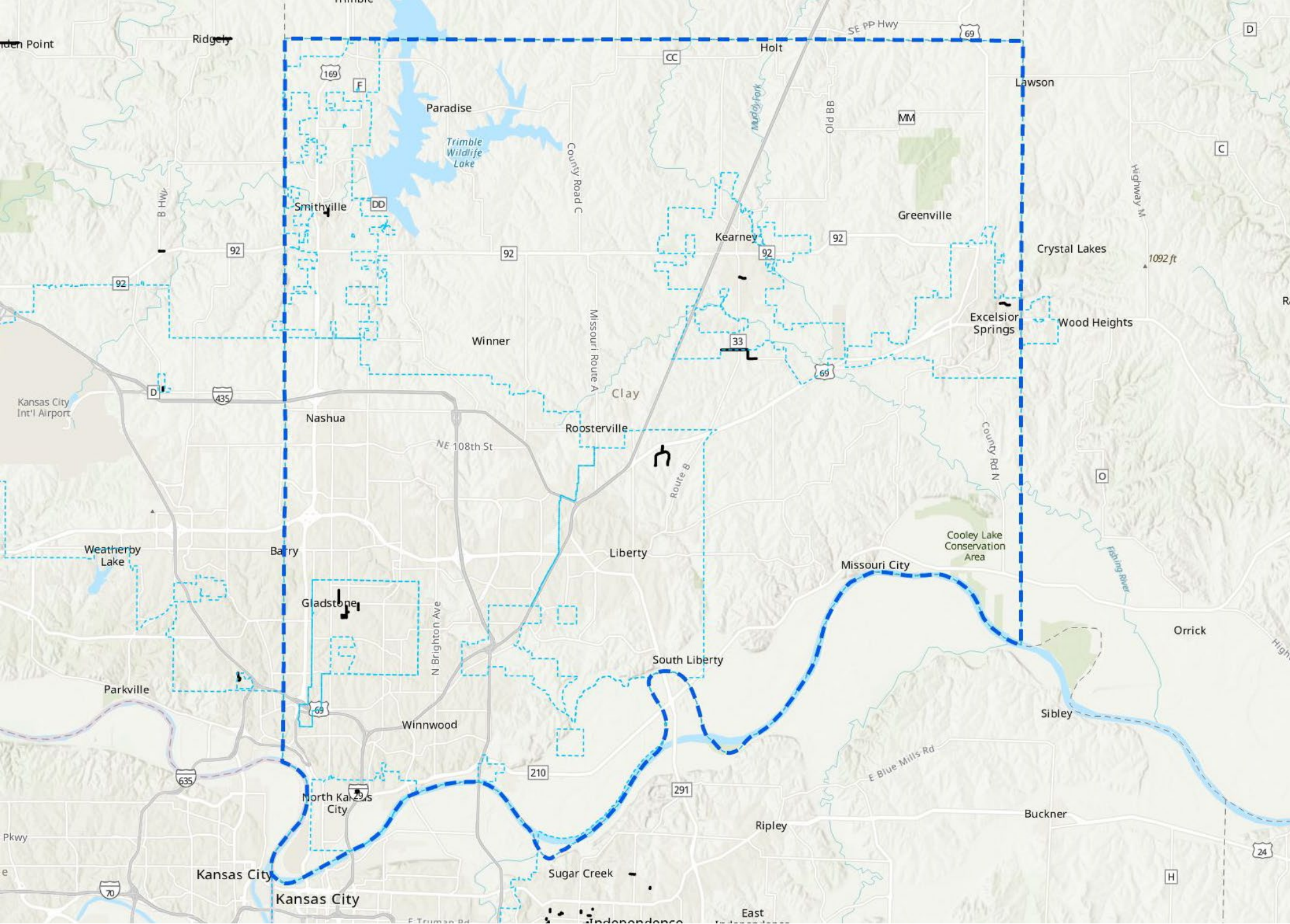
- 80+ miles of roadway
- \$7.1M estimated value



# Cass





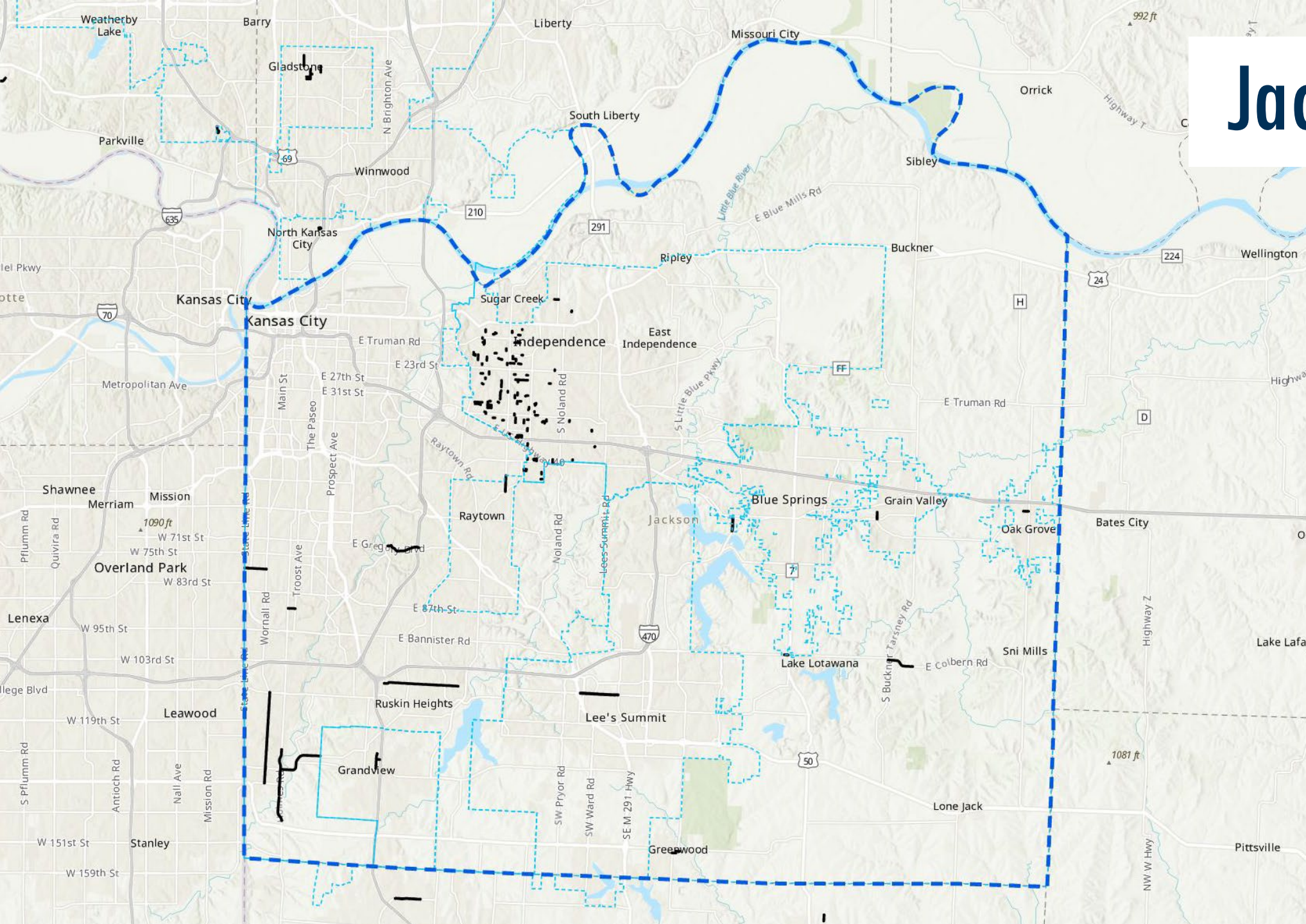


# Clay



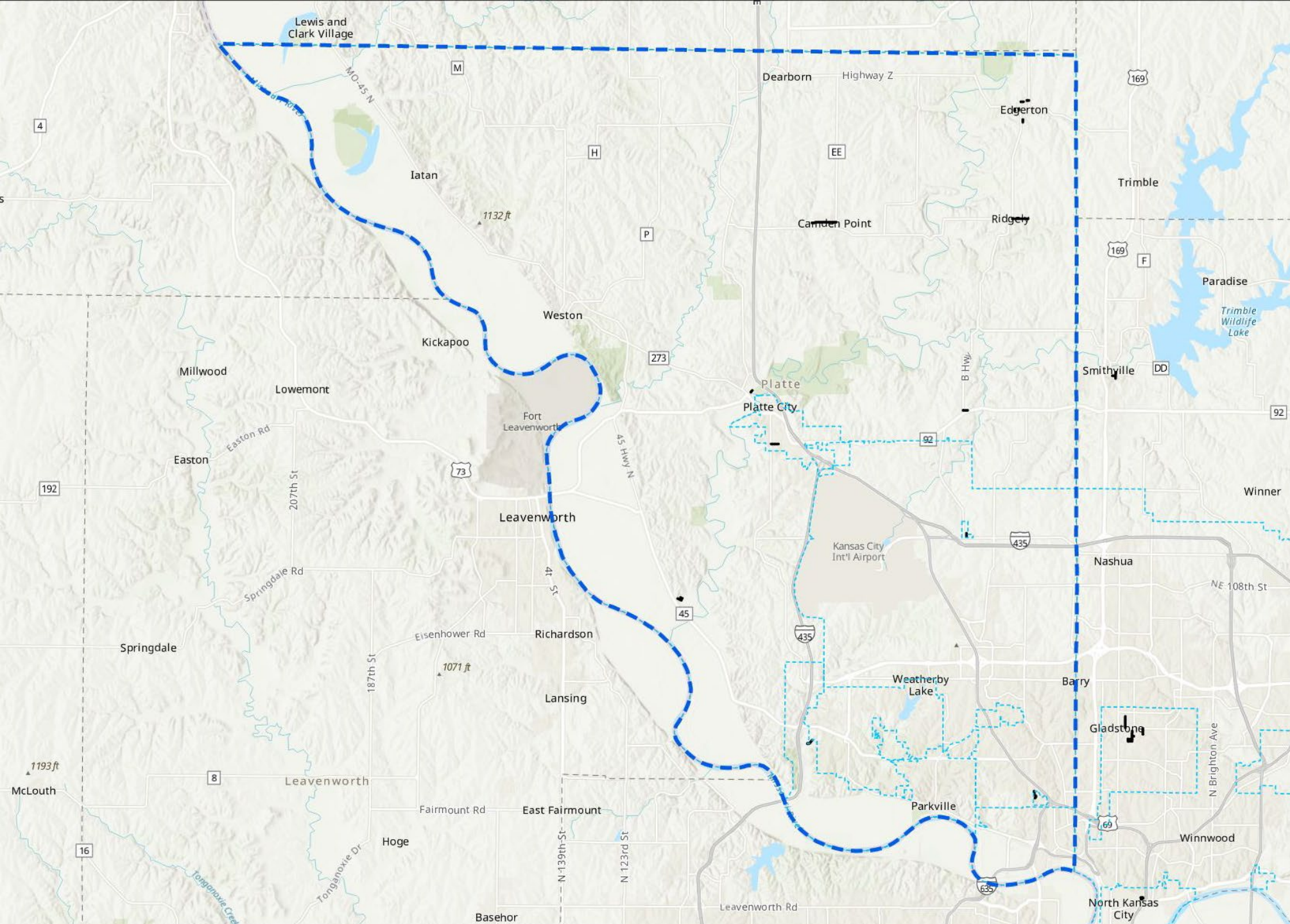


# Jackson





# Platte



# RPM Program Update

- ▶ **Bid Package Language Submitted — March 8, 2023**
- ▶ **MoDOT PSE Review Approval & Obligate \$ — estim. late May 2023**
- ▶ **Advertise, Bid, & Award — June 2023**
- ▶ **Construction NTP — mid/late July 2023**