

Greater Kansas City Community Child Care Exchange: An Opportunity to Support Families, Businesses & Communities

Community Child Care Exchange

Kansas City area employers struggle to recruit and retain employees because of a lack of affordable child care options for their employees.

The **Community Child Care Exchange** would help ensure that **working families have access to affordable, high quality child care**. Through the Exchange, an employee's child care costs would be shared between the employee, the employer, the state of Missouri (if eligible), and potentially other local funding sources. All of this would be coordinated at the local level by a community intermediary. In the KC region this is MARC.

Other states – like [Michigan](#) and [Kentucky](#) – have successfully implemented similar models.

State leaders in Missouri are currently exploring opportunities to provide state funding to support the Exchange.



For Employers

Employers could easily offer child care benefits to their employees through contributions to a community intermediary, who in turn would assist their employees to choose a spot at participating child care providers.



For Employees

Working families would benefit from government subsidy, employer contributions, and community intermediary coordination efforts to make care at their provider of choice more affordable and easier to enroll.



For Child Care Providers

Child care providers could take advantage of the coordination offered by intermediaries and employers to offer guaranteed spots for the children of employees.



For Communities

Community intermediaries would take on the responsibility to connect employers and child care providers to grow the number of child care options available, support workforce attraction for employers, and stabilize the child care marketplace in their community.

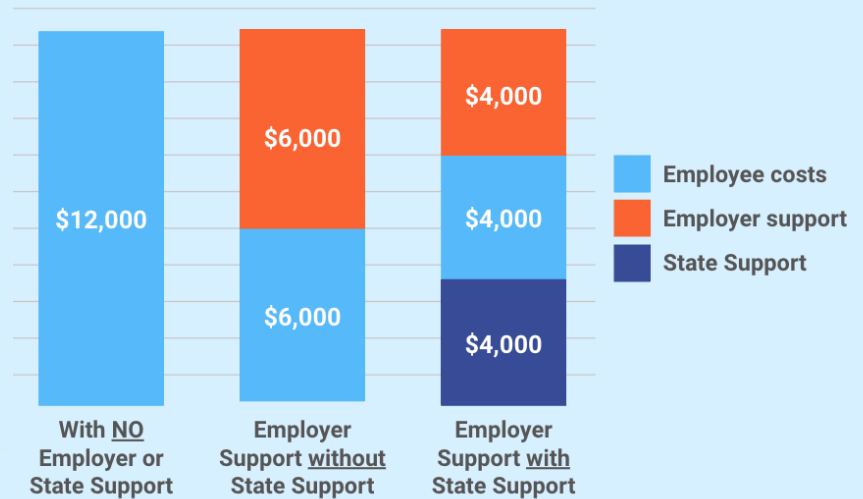
The Kansas City Community Child Care Exchange in Action

For employers

By participating in the Exchange, employers will be able to:

- Contribute to a meaningful solution for the community
- Address workforce needs by collaborating with local child care providers
- Discover innovative solutions to business challenges, such as partnering with other local businesses to pool resources and share the costs of creating dedicated child care slots to retain or attract employees

Even today, employers may be eligible for [Federal tax credits](#) related to their contributions to employee child care. By participating in the exchange, employers may not only benefit from these tax credits but also could potentially share annual child care costs with the State of Missouri, if applicable.

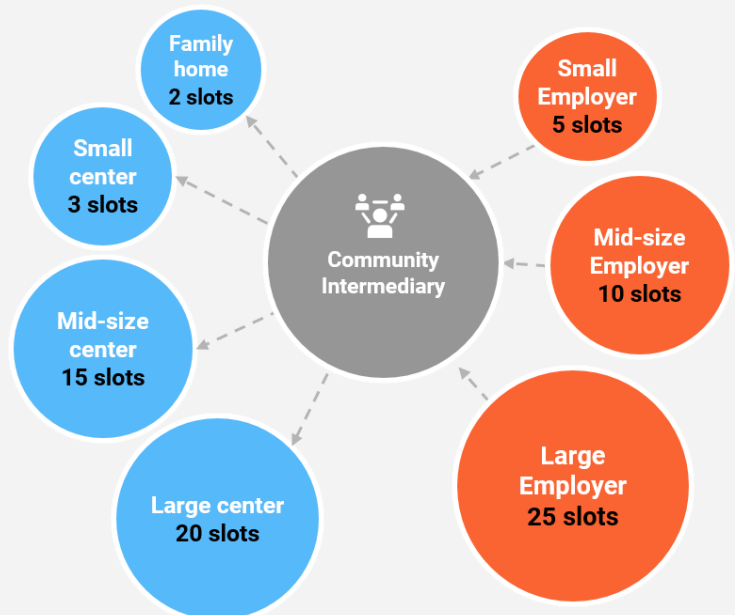


The Kansas City Community Child Care Exchange would benefit all communities and unique contexts in the region.

The Community Child Care Exchange is tailored to meet the unique needs of businesses, their employees, and local providers, whether they are in a rural, urban, or suburban setting. The community intermediary will:

- Conduct outreach to understand the specific needs of each business and its employees
- Facilitate partnerships between employers and local child care providers to ensure seamless solutions
- Gather and analyze data on child care supply and demand, working with community partners to address any gaps and support their workforce

Example: The community intermediary helps three employers enroll a total of 40 slots across four different child care providers in the community.



To learn more about this great way to support your employees, leverage resources and make a positive impact in our community, contact Toni Sturdivant, Director of Early Learning at tsturdivant@marc.org