



# Board of Directors MEETING NOTICE

Mid-America Regional Council • 600 Broadway, Suite 200 • Kansas City, Missouri 64105 • 816/474-4240

**April 22, 2025**

**Board Member Meeting: 12:00 p.m.**

**In-person attendees in MARC's Board Room with a remote option via Zoom**

**Members of the public who wish to participate in this meeting: please email [marcinfo@marc.org](mailto:marcinfo@marc.org) by 9:00 a.m. on Tuesday, April 22, 2025, for instructions to join the teleconference.**

## AGENDA

1. Brief Self-Introductions
  - a. Introducing Ashley Hand as the Director of Local Government Services
2. THRIVING OLDER ADULTS AND COMMUNITIES
  - a. REPORT: Status of Community Support Network of community service providers and health entities, Dan Cranshaw, KC Health Collaborative Executive Director
3. QUALITY EARLY LEARNING
  - a. REPORT: Overview of efforts to develop a Kansas City Regional Child Care Exchange
  - b. REPORT: Celebrating Head Start at the Family Fun Resource Fair on May 9, 2025
4. COMPETITIVE ECONOMY
  - a. REPORT: Current known impacts of federal workforce layoffs to the Kansas City region.
5. BRIEF REPORTS
  - a. REPORT: Update of Mid-America Regional Council federal grants and pass-through funds
  - b. VOTE: Authorize a consulting contract with Cambridge Systematics-WSP-Insight Transportation Team for the Development of an Activity-Based Travel Demand Model for Kansas City region.
  - c. VOTE: Authorize an update to the memoranda of agreement with seven local government partners to administer additional funds for phase two of the Little Blue River Watershed Feasibility Study with the U.S. Army Corps of Engineers.
6. Executive Director's Report

## CONSENT AGENDA (ADMINISTRATIVE MATTERS)

7. VOTE: Approve Consent Agenda
  - a. VOTE: Approve Minutes of the March 25, 2025, Board Meeting
  - b. VOTE: Approve the 2025 2nd Quarter Amendment to the 2024-2028 Transportation Improvement Program.
  - c. VOTE: Approve the 2025 Unified Planning Work Program - Amendment #2.
  - d. VOTE: Authorize consultant agreements for four 2025 Planning Sustainable Places studies.
  - e. VOTE: Approve receipt of funds from the Institute for Market Transformation for educational resources for building owners.
  - f. VOTE: Approve renewal of Mid-America Regional Council's contract for the Learning Genie platform to support Head Start child outcomes.



# Board of Directors MEETING NOTICE

---

Mid-America Regional Council • 600 Broadway, Suite 200 • Kansas City, Missouri 64105 • 816/474-4240

- g. VOTE: Authorize contract amendment and lease negotiations with a current Head Start partner to occupy the Thomas Roque facility.
- h. VOTE: Approve an agreement with Bluebird Network to provide circuit connections supporting the Public Safety Answering Point at American Medical Response's new location.

8. Other Business

9. Adjournment

**MARC Board of Directors - Members and Alternates**

<b>Name</b>	<b>Jurisdiction</b>	<b>Title</b>
Anderson, Jalen	Jackson County	County Legislator - Designee for County Executive Frank White Jr.
Bacon, John	Olathe, KS	Mayor
Baird, Bill	Lee's Summit, MO	Mayor
Boley, Damien	Smithville, MO	Mayor
Bunch, Eric	Kansas City, MO	Councilmember
Burroughs, Tom	Unified Government of WyCo/KCK	Commissioner
Caiharr, Carolyn	Edwardsville, KS	Mayor
Carpenter, Jon	Clay County	Commissioner
Culbertson, Jeff	Leavenworth County	Commissioner
Dove, Willie	Leavenworth County	Commissioner
Duncan, Johnathan	Kansas City, MO	Councilmember
Fast, Becky	Johnson County	Commissioner - Designee for Commission Chair Mike Kelly
Fears, Jared	Independence, MO	Councilmember
Fricke, Scott	Platte County	Presiding Commissioner
Garner, Tyrone	Unified Government of WyCo/KCK	Mayor/CEO
Grummert, Holly	Overland Park, KS	Councilmember
Hanzlick, Janee	Johnson County	Commissioner
Hardy, Jeff*	MoDOT	Asst. District Engineer
Heley, Logan	Overland Park, KS	Councilmember - Designee for Mayor Curt Skoog
Hill, Dr. Evelyn	Unified Government of WyCo/KCK	Commissioner
Hurlbert, Victor	Clay County	Auditor
Huston, Bob	Cass County	Commissioner
Jones, Leonard	Mayor	Grandview, MO
Kane, Mike	Unified Government of WyCo/KCK	Commissioner - Designee for Mayor/CEO Tyrone Garner
Kelly, Mike	Johnson County	Commission Chairman
Lopez, Beto	Lee's Summit, MO	Mayor Pro Tem – Designee for Mayor Bill Baird
Lucas, Quinton	Kansas City, MO	Mayor
Marshall, Megan	Jackson County	Legislator
McCandless, Bridget	Independence, MO	Councilmember – Designee for Mayor Rory Rowland
McDonough, Mike	Raytown, MO	Mayor
McGee, DaRon	Jackson County	Legislator
Meyers, Jeff	Johnson County	Commissioner
Mikkelson, Eric	Prairie Village, KS	Mayor
Moriarty, Michael**	KDOT	Chief of Transportation Planning
Nolte, Jerry	Clay County	Presiding Commissioner
Pogue, Randy	Kearney, MO	Mayor
Poppa, Michael	Johnson County municipalities	Mayor
Pretz, George	Miami County	Commission Chairman
Ramirez, Christian	Unified Government of WyCo/KCK	Commissioner
Redline, Chris**	MoDOT	District Engineer
Rowland, Rory	Independence, MO	Mayor
Sandifer, Mickey	Shawnee, KS	Mayor
Skoog, Curt	Overland Park, KS	Mayor
Stephens, Tom	Bonner Springs, KS	Mayor
Stieben, Mike	Leavenworth County	Commissioner
Tracy, Sheila	Ray County	Presiding Commissioner
Turnbow, Kristofer	Raymore, MO	Mayor
Vaughan, Tyler	Miami County	Commissioner
Vogt, Marge	Olathe, KS	Council member - Designee for Mayor John Bacon
Wagner, Scott	Clay County	Commissioner
Walker, Rick	De Soto, KS	Mayor
White III, Frank**	KCATA	President/CEO
White Jr., Frank	Jackson County	County Executive
Willett, Nathan	Kansas City, MO	Council member
Wright, Chris	Platte County	Recorder of Deeds
Younis, Inas	Overland Park, KS	Council member

\*Public Transit Representatives (Voting)    \*\*Public Transit Advisory Representatives (Non-Voting)

## AGENDA REPORT

---

MARC Board of Directors

April 2025  
Item No. 1

**ISSUE:**

Introductions and Board Sharing Time

**BACKGROUND:**

Time has been reserved on the agenda for introductions and items of interest to Board members. The Board Chair encourages board members to raise matters for discussion at future meetings or other issues of general concern or interest.

## AGENDA REPORT

---

MARC Board of Directors

April 2025

Item No. 2a

Thriving Older Adults and Communities

### **ISSUE:**

**REPORT:** Status of Community Support Network of community service providers and health entities, Dan Cranshaw, KC Health Collaborative Executive Director

### **BACKGROUND:**

The Community Support Network (CSN) is a community care hub model designed to strengthen a network of community-based organizations (CBOs) and contract with health care entities. Beginning in 2018 key stakeholders across the bi-state region launched the CSN. The Mid-America Regional Council (MARC) serves as the backbone organization for the network providing centralized administrative and contracting support.

Recognized as one of twenty community care hubs across the country, the CSN was chosen for an infrastructure and innovation grant and is partnering with community collaborators like the KC Health Collaborative to convene CBOs and health care entities. The CSN was also selected as one of seven out of the twenty awardees for an additional care transitions evaluation grant.

As federal funding becomes less certain, the CSN fosters collective efforts to maintain an infrastructure of CBOs providing nutrition, transportation, and other supportive services that impact health outcomes. At the meeting, Dan Cranshaw, Executive Director of KC Health Collaborative will provide a presentation about the CSN and how planning is progressing in the network.

### **BUDGET CONSIDERATIONS:**

None.

### **RELATED JURISDICTIONS:**

This item impacts all counties in the MARC region.

### **RECOMMENDATION:**

None. Information only.

### **STAFF CONTACT:**

Kristi Bohling-DaMetz, Director of Aging and Adult Services  
Dan Cranshaw, Executive Director, KC Health Collaborative

## AGENDA REPORT

MARC Board of Directors

April 2025  
Item No. 3a  
Quality Early Learning

### ISSUE:

DISCUSSION: Overview of efforts to develop a Kansas City Regional Child Care Exchange

### BACKGROUND:

In February of 2024, the Mid-America Regional Council (MARC) Early Learning program engaged in a regional strategic planning initiative, Connecting the P.I.E.C.E.S. (Plans to Improve the Early Childhood Education System) KC with numerous stakeholder groups and entities in Kansas and Missouri. The process began with data collection which indicated that 96% of surveyed employers reported employees were taking time off or terminating employment because of strains caused by child care. Additionally, most families are paying 14% or more of their income for one child.

During this process, the steering committee and workgroups arrived at suggested solutions to include employers, families, and the state sharing the cost of childcare to increase access to care and allow providers to charge the actual cost of quality childcare in the form of a Community Childcare Exchange. The Childcare Exchange is a strategy that allows for multiple parties to share the tuition costs for young children in our community. The Mid-America Regional Council (MARC) is providing leadership and development of this idea and depending on the final design, could play a role in its administration. We are now in the development stage of the Exchange and are beginning conversations with providers, employers and the public. Other parts of the plan are being put into implementation as well.

### ISSUES FOR DISCUSSION:

- Is there an opportunity for local government funds to feed into the Exchange system?
- Are any localities interested in serving as a funding employer?
- Are any localities interested in serving as a part of a committee of employers helping to design the system?

### BUDGET CONSIDERATIONS:

None.

### COMMITTEE ACTION:

Connecting the P.I.E.C.E.S. KC identified this funding model as a strategy to improve services, funding and coordination in the region.

### RELATED JURISDICTIONS:

Employers and providers across the metropolitan area would be eligible to participate.

### EXHIBITS:

[Greater Kansas City Community Child Care Exchange Early Learning Regional Strategic Plan](#)

### RECOMMENDATION:

None. Information only.

### STAFF CONTACT:

Toni Sturdivant, Ph.D., Director of Early Learning

# Greater Kansas City Community Child Care Exchange: An Opportunity to Support Families, Businesses & Communities

## Community Child Care Exchange

Kansas City area employers struggle to recruit and retain employees because of a lack of affordable child care options for their employees.

The **Community Child Care Exchange** would help ensure that **working families have access to affordable, high quality child care**. Through the Exchange, an employee's child care costs would be shared between the employee, the employer, the state of Missouri (if eligible), and potentially other local funding sources. All of this would be coordinated at the local level by a community intermediary. In the KC region this is MARC.

Other states – like [Michigan](#) and [Kentucky](#) – have successfully implemented similar models.

**State leaders in Missouri are currently exploring opportunities to provide state funding to support the Exchange.**



### For Employers

Employers could easily offer child care benefits to their employees through contributions to a community intermediary, who in turn would assist their employees to choose a spot at participating child care providers.



### For Employees

Working families would benefit from government subsidy, employer contributions, and community intermediary coordination efforts to make care at their provider of choice more affordable and easier to enroll.



### For Child Care Providers

Child care providers could take advantage of the coordination offered by intermediaries and employers to offer guaranteed spots for the children of employees.



### For Communities

Community intermediaries would take on the responsibility to connect employers and child care providers to grow the number of child care options available, support workforce attraction for employers, and stabilize the child care marketplace in their community.

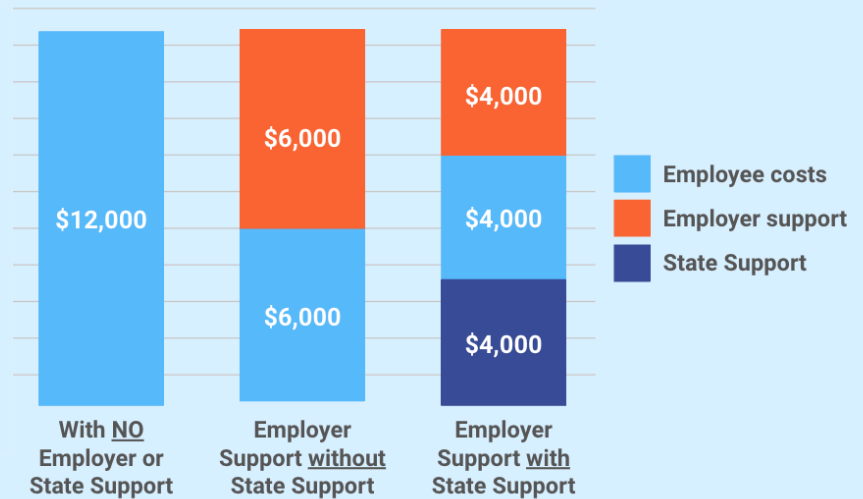
# The Kansas City Community Child Care Exchange in Action

## For employers

By participating in the Exchange, employers will be able to:

- Contribute to a meaningful solution for the community
- Address workforce needs by collaborating with local child care providers
- Discover innovative solutions to business challenges, such as partnering with other local businesses to pool resources and share the costs of creating dedicated child care slots to retain or attract employees

Even today, employers may be eligible for [Federal tax credits](#) related to their contributions to employee child care. By participating in the exchange, employers may not only benefit from these tax credits but also could potentially share annual child care costs with the State of Missouri, if applicable.

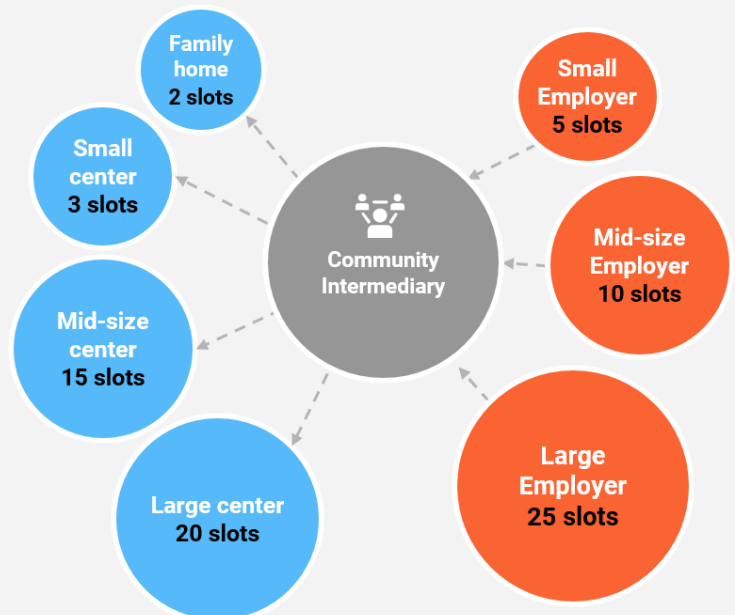


## The Kansas City Community Child Care Exchange would benefit all communities and unique contexts in the region.

The Community Child Care Exchange is tailored to meet the unique needs of businesses, their employees, and local providers, whether they are in a rural, urban, or suburban setting. The community intermediary will:

- Conduct outreach to understand the specific needs of each business and its employees
- Facilitate partnerships between employers and local child care providers to ensure seamless solutions
- Gather and analyze data on child care supply and demand, working with community partners to address any gaps and support their workforce

*Example:* The community intermediary helps three employers enroll a total of 40 slots across four different child care providers in the community.



To learn more about this great way to support your employees, leverage resources and make a positive impact in our community, contact Toni Sturdivant, Director of Early Learning at [tsturdivant@marc.org](mailto:tsturdivant@marc.org)



## AGENDA REPORT

---

MARC Board of Directors

April 2025  
Item No. 3b  
Quality Early Learning

**ISSUE:**

REPORT: Celebrating Head Start at the Family Fun Resource Fair

**BACKGROUND:**

You're invited to the MARC Head Start Family Fun Resource Fair on May 9.

To celebrate the 60<sup>th</sup> anniversary of the national Head Start program, MARC Head Start will host a [Family Fun Resource Fair](#) from 5 to 8 p.m. on Friday, May 9, at the MARC office, 600 Broadway Blvd. in Kansas City, Missouri.

The resource fair is free and open to children and families of the MARC Head Start Preschool and Early Start programs, and to families of young children throughout the metropolitan area. The event will feature activities that promote family unity and engagement. Resource vendors also will be available to provide a wide range of services and educational opportunities.

Current vendors include:

- 988/Mobile Crisis Collaborative
- Hold 'em Up 4 Care
- Jackson County CASA
- Kansas City Health Department
- Kansas City Kansas Community College
- MARC Air Quality/MARC Way to Go
- MARC Climate Action Plan
- MARC Solid Waste Management District
- Missouri Department of Conservation
- Missouri River Bird Observatory
- PBS Kids
- Show Me KC Schools
- SWOPE Health

Thanks to our sponsors Constructive Playthings, Lakeshore Learning, and United Healthcare.

**BUDGET CONSIDERATIONS:**

None.

**RELATED JURISDICTIONS:**

This item impacts Jackson, Clay and Platte counties in Missouri.

**RECOMMENDATION:**

None. Information Only.

**STAFF CONTACT:**

Kasey Lawson, Head Start Director  
Toni Sturdivant, Ph.D., Director of Early Learning

## AGENDA REPORT

---

MARC Board of Directors

April 2025  
Item No. 4a  
Competitive Economy

### ISSUE:

REPORT: Current known impacts of federal workforce layoffs to the Kansas City region.

### BACKGROUND:

The Kansas City metropolitan area is a regional center for federal employment, employing 29,300 civilian workers as of January 2025. Since then, the Department of Government Efficiency (DOGE) has announced the layoff of 280,000 federal employees nationwide, or roughly 10% of the federal workforce. The size of this reduction raises the question what its impact might be on the Kansas City region. The Mid-America Regional Council (MARC) has responded to many inquiries from the press as a result.

Staff will report on the findings to date, focusing on the size of the potential impact of the impact on the regional economy and the occupations most likely to be affected.

### ISSUES FOR DISCUSSION:

- What potential civic collaborations might help retain the talent being laid off? What roles could local government play to catalyze and advance such an effort?

### RELATED JURISDICTIONS:

This item impacts all counties in the MARC region.

### EXHIBITS:

Presentation materials will be provided after the Board meeting.

### RECOMMENDATION:

None. Information only.

### STAFF CONTACT:

Frank Lenk, Director of the Office of Economic Research

## AGENDA REPORT

---

MARC Board of Directors

April 2025  
Item No. 5a  
Effective Local Government

**ISSUE:**

**REPORT:** Status of Mid-America Regional Council federal grants, pass-through funds and other funding.

**BACKGROUND:**

Changes in the federal government continue to impact MARC's work. Staff will present another update at this meeting.

General changes we have seen over the past few weeks include:

- "Suspension" and cancellation of active and future grants
- Threats of significant changes in the upcoming budget
- Slow or no response to inquiries

**BUDGET CONSIDERATIONS:**

Staff continue to monitor cash flow, grants at risk, partner contracts and staffing. We have begun a risk analysis and will initiate the 2025 Revised/2026 Budget process early. However, it is difficult to create funding projections because change continues to happen rapidly.

**RELATED JURISDICTIONS:**

This item impacts all counties in the MARC region.

**RECOMMENDATION:**

None. Information only.

**STAFF CONTACT:**

David Warm, Executive Director

Carol Gonzales, Director of Finance and Administration

# AGENDA REPORT

MARC Board of Directors

April 2025

Item No. 5b

Efficient Transportation and Quality Places

## ISSUE:

VOTE: Authorize a consulting contract with Cambridge Systematics-WSP-Insight Transportation Team for the Development of an Activity-Based Travel Demand Model for Kansas City region.

## BACKGROUND:

Over the past 30 years, the Mid-America Regional Council (MARC) has developed and maintained a regional Travel Demand Forecast Model (TDFM) for our bi-state planning area. This model analyzes travel patterns and plays a critical role in the development of long-range transportation plans and making informed decisions about our transportation system. According to the Federal Highway Administration, the next MARC Metropolitan Transportation Plan (MTP) will be due by 2030, with a planning horizon of 2060. In light of significant shifts in travel patterns observed in the post-pandemic era, we are preparing to transition to a next-generation Activity-Based Travel Model. This advanced model will provide greater insight into key issues such as traffic congestion, remote work trends, community impacts analyses, and multimodal transportation planning.

On March 3, 2025, MARC published a Request for Proposals (RFP) seeking responses from qualified firms to develop the next generation regional travel model. MARC received only one proposal in response to the RFP. A selection committee made up by MARC, KDOT, MoDOT and KCATA staff reviewed and evaluated the proposal submitted by the Cambridge Systematics-WSP-Insight Transportation Team for the Development of an Activity-Based Travel Demand Model in MARC region. An in-person interview was conducted on April 11, 2025. The selection committee recommends selection of the Cambridge Systematics-led team for this project.

## BUDGET CONSIDERATIONS:

This project will use 2025 budgeted CPG funds not to exceed \$1,100,000

REVENUES	
Amount	\$1,100,000
Source	Consolidated Planning Grant funds (CPG)
PROJECTED EXPENSES	
Personnel (salaries, fringe, rent)	
Contractual	\$1,100,000
Pass-Through	
Other (supplies, printing, etc.)	

## RELATED JURISDICTIONS:

This item impacts all counties in the MARC region.

## RECOMMENDATION:

Authorize a contract with Cambridge Systematics-WSP-Insight Transportation Team to develop the next generation Regional Travel Demand Model with a length of 18 months and a contract amount not to exceed \$1,100,000.

## STAFF CONTACT:

Martin Rivarola, Assistant Director of Transportation and Land Use  
Eileen Yang, Transportation Modeling Manager

# AGENDA REPORT

## MARC Board of Directors

April 2025  
Item No. 5c  
Healthy Environment

### ISSUE:

VOTE: Authorize an update to the memoranda of agreement with seven local government partners to administer additional funds for phase two of the Little Blue River Watershed Feasibility Study with the U.S. Army Corps of Engineers.

### BACKGROUND:

The Little Blue River Watershed is a 224 square-mile watershed, comprised of 12 jurisdictions with 81% of the land area in the watershed located in the Missouri jurisdictions of Kansas City, Jackson County, Lee's Summit, and Independence. The watershed includes many substantial regional assets, including Longview and Blue Springs Lakes, and important recreational and habitat assets tied to the Little Blue Trace Trail. Significant challenges in the watershed include flooding, water quality, sedimentation in the lakes, and erosion in the banks and bed of the main stem of the Little Blue and its tributaries.

At the request of local jurisdictions, the U.S. Army Corps of Engineers launched a watershed feasibility study in 2021. The study evaluates the causes and dynamics of those identified challenges and will formulate alternative solutions. Once the study is completed in 2027, the Corps will work with local communities to implement solutions, with an anticipated cost share rate of 65%/35% (federal/local).

In June 2021, the Mid-America Regional Council (MARC) Board approved MARC serving as the formal study sponsor on behalf of participating communities, and entering into a Federal Cost Share Agreement with the Corps. In this role, MARC administers and manages the project and facilitates discussions among the Corps and participating communities. The participating communities of Blue Springs, Independence, Jackson County, Kansas City, Missouri, Grandview, Lee's Summit and Raytown contributed the 50% project share based on land area in the watershed.

The overall project at that time was estimated to cost three million dollars, with fifty percent contributed by local partners. Phase 1 funds for initial project scoping were approved in June 2021 and Phase 2 funds for the full study were approved in September 2022 by the MARC Board. At this time, the Corps requests an additional \$500,000 in local funds (matched by an equal amount of federal funds) to address emergent issues related to risk, public safety and geotechnical feasibility that were not included in the initial scope of work. All project partners concur with the need for additional funds. The full project budget, including phase two additional funds, is shown below. Partners agreed to compensate MARC with an additional \$60,000 for project coordination and facilitation services.

### BUDGET CONSIDERATIONS:

This additional amount will result in a total project cost of \$4,000,000 with \$2,000,000 of federal funds and \$2,000,000 from contributing local jurisdictions.

REVENUES	
Amount	\$560,000
Source	Local community contributions
PROJECTED EXPENSES	
Personnel (salaries, fringe, rent)	\$60,000
Contractual	\$500,000
Pass-Through	
Other (supplies, printing, etc.)	



## **AGENDA REPORT**

---

MARC Board of Directors

April 2025  
Item No. 7a

**ISSUE:**

VOTE: Approve minutes of the March 25, 2025, Board meeting

**BACKGROUND:**

The minutes of the March 25, 2025, meeting are enclosed.

**RECOMMENDATION:**

Approve the minutes of the March 25, 2025, meeting.

**STAFF CONTACT:**

David Warm, Executive Director  
McKenzie Neds, Executive Assistant

# MARC

MID-AMERICA REGIONAL COUNCIL

## BOARD OF DIRECTORS MEETING SUMMARY

MARCH 25, 2025

12:00 p.m.

### BOARD MEMBERS PRESENT

Commissioner Janeé Hanzlick, Johnson County, KS - MARC Board Chair  
Mayor Pro Tem Lopez, Lee's Summit, MO - MARC Board 1<sup>st</sup> Vice Chair  
Mayor Damien Boley, Smithville, MO - MARC Board 2<sup>nd</sup> Vice Chair  
Council member Holly Grummert, Overland Park, KS - Treasurer  
Council member Bridget McCandless, Independence, MO - Secretary  
Council member Eric Bunch, Kansas City, MO  
Commissioner Tom Burroughs, Unified Government of Wyandotte County and Kansas City, KS  
Commissioner Jeff Culbertson, Leavenworth County, KS  
Council member Johnathan Duncan, Kansas City, MO  
Commissioner Becky Fast, Johnson County, KS  
Council member Jared Fears, Independence, MO  
Commissioner Scott Fricker, Platte County, MO  
Council member Logan Heley, Overland Park, KS  
Commissioner Dr. Evelyn Hill, Unified Government of Wyandotte County and Kansas City, KS  
Victor Hurlbert, Auditor, Clay County, MO  
Mayor Eric Mikkelson, Prairie Village, KS  
Commissioner Jerry Nolte, Clay County, KS  
Mayor Michael Poppa, Roeland Park, KS  
Mayor Mickey Sandifer, Shawnee, KS  
Mayor Tom Stephens, Bonner Springs, KS  
Commissioner Mike Stieben, Leavenworth County, KS  
Commissioner Shelia Tracy, Ray County, MO  
Mayor Kris Turnbow, Raymore, MO  
Commissioner Tyler Vaughn, Miami County, KS  
Mayor Pro Tem Marge Vogt, Olathe, KS  
Mayor Rick Walker, De Soto, KS

### STAFF PRESENT

Executive Director David Warm and other MARC staff

### OTHERS

Jeff Hardy, MODOT  
Mayor Dana Webb, Oak Grove, MO

### INTRODUCTIONS AND BOARD SHARING TIME

Commissioner Janeé Hanzlick called the meeting to order at 12:05 p.m. and welcomed attendees. Due to the meeting being held remotely and in-person, Commissioner Hanzlick provided instructions for participation. She reported that staff would present on all the agenda items, provide an opportunity for comments and questions after each item, and ask for approval of all agenda items as they appear on the agenda. The consent agenda will be voted on at the end of the meeting. Members will have an opportunity to abstain or object to any items necessary during each vote.



## PRESENTATION: World Cup Communications Update and introduction of Tracy Whelpley, KC2026.

David Warm, MARC's Executive Director introduced Tracy Whelpley and Maggie Collins from KC2026 who gave a communication update for the local elected leaders on the MARC Board and in the broader community. Ms. Whelpley reminded the board of the three pillars the KC2026 team are using as they plan for the World Cup to arrive in Kansas City: deliver the Kansas City magic, rise on the world stage, and leave a lasting legacy. These three pillars are used in every facet of planning, from small business engagement to transit opportunities, to Fan Fest execution.

Local elected leaders and city staff are encouraged to utilize the [event portal](#) that is hosted by MARC by entering in potential events that will be hosted by the various jurisdictions throughout the area. This high-level view of activity will provide the best experience for users and the best way to coordinate needs across jurisdictions. Cities and counties who are not currently using the portal should contact [marcinfo@marc.org](mailto:marcinfo@marc.org) for more information on how to get started.

Ms. Whelpley played the recently released sonic id for Kansas City and showed a 2025 timeline for events happening around the World Cup including: April the Kansas City poster reveal of local artists, June and July will mark the one-year countdown until the games begin sparking activations throughout the area, September will launch volunteer opportunities, and in December the final draw for teams will occur.

Ms. Collins spoke briefly about how KC2026 is advocating funding at the federal, state, and local levels. KC2026 is acting with the other host cities as a coalition both for funding from these groups and for safety and security needs for each host city. She indicated that the delegation on both sides of the state line are excited and ready to help plan and organize the region around this event which brings added momentum to the Midwest cause. KC2026 is waiting for confirmation from Congress and Capital Hill that there will indeed be funding for all the host cities for this major event. There are currently commitments from both Missouri and Kansas for funding streams and there is also strong local jurisdictional support. KC2026 is ready and willing to help any jurisdictions to support them now and into the future.

Commissioner Mike Stieben asked if KC2026 was aware of the KCATA bus route cancellations and how it could potentially effect resources for the event and he also expressed concern about the surrounding Amtrak rails between Union Station and Independence Ave because of the trash and general aesthetics of the area. Ms. Collins acknowledged the latter issue first and commented that they are brainstorming creative solutions to that type of issue so that all areas of the event deliver the magic of Kansas City. Ms. Collins commented that while the KCATA announcement will effect the transit situation if the gap isn't filled by the time of the event, Kansas City has already secured a bus contract specifically for the corridors outlined by FIFA (airport to stadium, stadium to Fan Fest, etc.). KC2026 is especially interested in the development of these altered transit lines because lack of daily transportation for citizens is likely to cause stress on the event specific transportation system that is being planned. She mentioned that Jason Sims is the Director of Transportation for KC2026 and he has been deeply involved with the current shifts.

## REPORT: Aging Services Update

Kristi Bohling-DaMetz, Director of Aging and Adult Services, provided an update about several facets of the Aging program at MARC. She asked the board to save the date for two events coming up, the Age Positive Conference (May 2, 2025) and the Age of Celebration (May 20, 2025). More details for these events can be found on the MARC website. Ms. Bohling-DaMetz announced that the public comment period for the 2026 Area Plan for the aging program has closed and the plan was finalized. She also mentioned that there will be a virtual public hearing for the plan on April 7, 2025 and Board members are encouraged to attend if

interested. She also was pleased to announce that the State of Missouri was able to pass an early supplemental in the budget so that the existing federal funding can continue to flow to Area Agencies on Aging and communities across Missouri. Ms. Bohling-DaMetz also announced that the Consumer Directed Services (in-home maker and care giver services) has to be sunset by the end of the state fiscal year due to a return to pre-COVID funding amounts. The program was extremely popular and the MARC Aging team is happy to discuss any of these changes with members of the community. She encouraged the Board to reach out to her if their constituents contact them. She also mentioned that the Community Support Network (CSN), a national community care hub model, has convened a CSN Advisory and CBO Coalition to inform network design and funding mechanisms into the future. And the renovations for the nutrition repack facility in North Kansas City are nearly complete which will allow fresh fruits and vegetables and grains be added to the home delivered meal program.

#### REPORT: Connected KC 2025 regional transportation plan update

Ron Achelpohl, Director of Transportation and Environment, briefly shared an update regarding the Connected KC 2050 transportation plan with the MARC Board. This plan will be presented for public review and comment in April this year. Connected KC 2050 serves as the region's long-range metropolitan transportation plan and is required to be updated at least every five years under the Federal Infrastructure Investment and Jobs Act of 2022 (IIJA). Mr. Achelpohl outlined the key completed steps and takeaways from public and committee engagement, the adjusted policy framework and project prioritization that includes housing, digital connectivity and updated language, the work staff are doing to reframe policy framework in light of shifting federal policy landscape, and the next steps prior to plan update in June 2025. Mr. Achelpohl highlighted that transit funding and implementation are key priorities in the plan due to the current need for a regional funding mechanism. He also mentioned that the new plan would be hosted on the website in a different format which will include fewer PDFs and more dynamic story maps. The full plan can be found on the website: <https://connectedkc.org/>

Commissioner Mike Stieben asked where the maintenance and expansion of intercity passenger rail fit into the plan? Mr. Achelpohl stated that intercity passenger rail is an element of the plan, but it is funded through the state. There are priorities listed for a new Amtrak service, and the state of Missouri is considering an additional route of the River Runner in and out of the Kansas City area but it will require federal and state funding.

#### BRIEF REPORTS:

##### REPORT: Update of Mid-America Regional Council federal grants and pass-through funds.

Carol Gonzales, Director of Finance and Administration, provided another update on the status of several federal funding streams that MARC programs use. Since the last Board meeting MARC staff have seen a reversal of pause on some grants, new grant opportunities withdrawn for future applications, changes to reimbursement submittal processes, and slow or no response to inquiries for certain administrations. Other concerns that were mentioned were a delay in the 2025 ICAP rate and a that the new social security ID requirements may require more support to clients and constituents across the region.

Ms. Gonzales also mentioned that MARC staff have compiled an inventory of current foundation funded work and are working across the organization on strategies regarding foundation grants going forward. And the team has heard from foundation partners that they have been overwhelmed with requests from community-based organizations across the region whose federal funding is being reduced or eliminated. MARC staff are beginning the 2025 revised and 2026 budget process early this year in light of the fluctuation in funding and they will continue to keep the board updated as things change.

Commissioner Janeé Hanzlick asked if we knew the timing of the social security ID change in requirements. Staff reported that the changes go into effect April 1, 2025. Commissioner Hanzlick spoke words of encouragement directly to the MARC staff during the time of

uncertainty.

REPORT: Community data tools for regional planning

Amanda Graor, Director of Data and Digital Services, presented digital tools that are housed on the MARC website that are free to use for planning purposes. These tools can be found on the MARC website <https://www.marc.org/data-maps/data-tools-and-interactive-maps> and can be shared widely as a resource for municipalities. Ms. Graor specifically showed the [Population Explorer](#) and [Community Views](#) tools and their functions as this data is frequently requested by jurisdictions. She also mentioned that the MARC team is happy to meet with teams that may have specific data questions and find solutions to their needs.

EXECUTIVE DIRECTORS REPORT

David Warm, MARC's Executive Director, reminded the board to save the date of the MARC Regional Assembly and Regional Leadership Awards on June 13, 2025. Mr. Warm also announced to the Board that the YMCA of Greater Kansas City recently made public the decision to withdraw from the Head Start program. MARC staff are working with the YMCA on transition families, students, and teaching staff to other locations within the region.

CONSENT AGENDA (ADMINISTRATIVE MATTERS)

VOTE: Approve Consent Agenda

- a. VOTE: Approve Minutes of the February 25, 2025, Board Meeting
- b. VOTE: Approve changes to employee fringe benefit package effective July 1, 2025.
- c. VOTE: Authorize a grant application to the Darr Family Foundation for \$300,000 dollars to support the Double Up Food Bucks Program.
- d. VOTE: Approve submission of Amendment #1 of the SFY 2025 Area Plan and Budget to the Missouri Department of Health and Senior Services.
- e. VOTE: Authorize an application to the Missouri Department of Health and Senior Services for the KC Regional Community Health Worker Collaborative.
- f. VOTE: Approve 2024 federally required performance measures
- g. VOTE: Approve 2024 functional classification system updates
- h. VOTE: Authorize consultant agreement with Toole Design Group for the Greater Kansas City Regional Bikeway Plan update.
- i. VOTE: Authorize consultant agreements for four 2025 Planning Sustainable Places studies.
- j. VOTE: Authorize an application for the Municipal Investment Fund opportunity through International Council for Local Environmental Initiatives - Local Governments for Sustainability.
- k. VOTE: Approve actions taken on the March 11, 2025, Head Start Advisory Committee meeting.
- l. VOTE: Approve the acquisition of additional Motorola VESTA 911 workstations to support emergency communications operations.
- m. VOTE: Approve an agreement with Segra (formerly United Private Networks - UPN) to provide circuit connections supporting the PSAP at American Medical Response's new location.
- n. VOTE: Authorize an agreement with CommCARE to provide Applied Suicide Intervention Skills Training for first responders, mental health professionals, school counselors and hospital staff in Clay, Jackson, Platte and Ray counties in Missouri.

MOTION: Council member Holly Grummert moved for approval of all agenda items and the consent agenda and Council member Bridget McCandless seconded. Commissioner Hanzlick asked if any member wanted to abstain or object to any of the agenda items.

The motion passed.

OTHER BUSINESS

There was no other business.

ADJOURNMENT

The meeting was adjourned at 1:23 p.m.

## AGENDA REPORT

### MARC Board of Directors

April 2025  
Item No. 7b  
Efficient Transportation and Quality Places

**ISSUE:**

VOTE: Approve the 2025 2<sup>nd</sup> Quarter Amendment to the 2024-2028 Transportation Improvement Program.

**BACKGROUND:**

The Transportation Improvement Program (TIP) is the region's short-range program, identifying projects to receive federal funds and projects of regional significance to be implemented over the next three to five-year period. The Mid-America Regional Council (MARC) amends the TIP on both a quarterly cycle and as needed to accommodate changes to projects in the TIP.

The proposed 2025 2<sup>nd</sup> Quarter Amendment to the 2024-2028 Transportation Improvement Programs includes 26 total projects. 12 projects were modified based on scope, schedule or budget and 14 new projects requested to be added. Details of these projects are available for review on the Internet at: [www.marc.org/TIP](http://www.marc.org/TIP).

Also located in the amendment is the Downtown Gladstone North Oak Complete Streets project (TIP #518017) that has requested a second schedule modification to avoid conflict with potential World Cup plans. In accordance with the MARC Reasonable Progress Policy (which allows one automatic schedule modification), the second modification requires approval from TTPC and the MARC Board of Directors. It is included in the amendment to facilitate these approvals.

MARC's Public Involvement Plan requires that amendments to the TIP be released for public review and comment prior to adoption. Eleven comments were received during the comment period. The comments and responses from MARC are included for review.

Following the comment period, the Kansas Department of Transportation informed MARC of the cancellation of proposed project #980038 - Paratransit Vehicle for the Paola Senior Center. The center has notified KDOT of their intention to withdraw from the FTA 5311 Formula Grants for Rural Areas program and no longer needs the vehicle.

**BUDGET CONSIDERATIONS:**

None.

**EXHIBITS:**

[2nd Quarter Amendment](#)

**COMMITTEE ACTION:**

The Missouri STP Priorities Committee and the Total Transportation Committee have reviewed and approved the schedule modification to the Downtown Gladstone North Oak Complete Streets project.

**RELATED JURISDICTIONS:**

This item impacts all counties in the MARC region.

## AGENDA REPORT

---

MARC Board of Directors

### **RECOMMENDATION:**

Approve the 2025 2<sup>nd</sup> Quarter Amendment to the FFY 2024-2028 TIP.

### **STAFF CONTACT**

Marc Hansen, Principal Planner

**2024-2028 Transportation Improvement Program  
2025 2<sup>nd</sup> Quarter Amendment  
Public Comment and Response**

**Comment #1 – I-49**

“Please consider the widening of I49 into Case county. There is a bottleneck everyday and there have been numerous wrecks.”

**Response to Comment #1**

Thank you for your recent comment regarding the proposed 2025 2<sup>nd</sup> Quarter Amendment to the 2024-2028 Transportation Improvement Program (TIP). We shared your comments with the Missouri Department of Transportation, the MARC Total Transportation Policy Committee and the MARC Board of Directors for their consideration.

While not part of the proposed amendment to the TIP, a project to add travel lanes and repair bridges along Interstate 49 from 155<sup>th</sup> Street to Missouri Route 58 is already funded and included in the TIP. This project sponsored by the Missouri Department of Transportation is currently under design and preliminary engineering and is scheduled to begin construction in 2027/2028.

We look forward to your continued participation in the regional transportation planning process and encourage you to review the [Guide to Transportation Decision Making](#). This guide is designed to help area residents understand the complex process of transportation decision making and learn how they can more effectively provide input.

Sincerely,

Marc Hansen, AICP  
Principal Planner  
Mid-America Regional Council

**Comment #2 – Johnson County Transit**

“For the Johnson County Transit improvements, I hope some of the funds can go toward restoring a park & ride bus stop at or near downtown Overland Park. The park & ride at the prior Farmer's Market was removed and not replaced with anything except unsheltered bus stops with no park & ride near 80th & Metcalf. This change has caused unnecessary hardship to riders and made it impossible for people with mobility issues to ride the bus, since they can no longer park and get on the bus from a downtown Overland Park park & ride. Thank you.”

**Comment #3 – Johnson County Transit**

“Why are we worried about bus stop shelters, which would be nice, when the buses don't even show up. I don't know how anyone can use the bus here to get to work. They are extremely unreliable. You would lose your job and not even get home a lot of days. Things have to change to keep the buses running and drivers to drive them. Shelters would be nice, but they are not a priority.”

**Comment #4 - Johnson County Transit**

“Bus service in Johnson County is abysmal. I have a lung condition that prevents me from being able to walk to the nearest bus stop. The bus stop locations are non-existent. There are no shelters to provide protection from the elements. Spending more money on a failing transportation system will NOT generate new riders. It takes far too long to go from one place to another. I have no idea what the fares are even if I could get to a bus stop.”

#### **Response to Comments #2 - #4**

Thank you for your recent comment regarding the proposed 2025 2<sup>nd</sup> Quarter Amendment to the 2024-2028 Transportation Improvement Program. We shared your comments with Johnson County Transit, the MARC Total Transportation Policy Committee and the MARC Board of Directors for their consideration.

Extensive planning activities to support enhancement of transit services are currently under way in our region and in Johnson County. In 2025, Johnson County Transit is finalizing a Transit Strategic Plan which aims to serve as a guide for future services enhancements, support applications for grant funding, prepare for annual budget requests, etc.

Further, MARC and partners will also seek to advance a [Smart Moves Transit and Mobility Plan Update](#) this year. This plan details the transit system vision for the Kansas City area. This plan update will include an assessment of existing services, prioritization of existing and new routes services and programs, identification of potential capital and operating costs for system enhancement and review of governance and funding models for system enhancement. This work will be conducted with the assistance of local stakeholders and the public.

Both of these efforts will guide future capital investments (such as bus stops and park and ride lots) and operations of transit services (routes and frequency of services). We encourage your involvement and input into both of these processes as these efforts are underway.

We look forward to your continued participation in the regional transportation planning process and encourage you to review the [Guide to Transportation Decision Making](#). This guide is designed to help area residents understand the complex process of transportation decision making and learn how they can more effectively provide input.

Sincerely,

Marc Hansen, AICP  
Principal Planner  
Mid-America Regional Council

#### **Comment #5 – General Transit**

“Kck KCMO buses”

#### **Comment #6 – General Transit**

“I believe in people that are disabled need that bus. The people that are in Kansas City any bus time to tough nowadays when some people can't drive.”



**Comment #7 – General Transit**

“Personally I believe they should to charge to ride the buses. Senior citizen should be able to ride for free. Senior citizen show the driver a valid id wheather it be a state id with there picture and date of birth on it. The fare would minimal and a monthly bus pass would be twenty dollars. For those under sixth five.”

**Comment #8 – General Transit**

“Yes I live in Riverside Missouri in a nursing home and there's no bus schedules over here I was wondering could they put a bus stop over here cuz we had no way of getting around”

**Comment #9 – General Transit**

“We need it how can we go to work. and take care are biss”

**Comment #10 – General Transit**

“I want rides for people getting to work and handicapped person access to take priority over the street car. I believe street car riders have a far greater ability to pay their fares and willingness!”

**Comment #11 – General Transit**

“We like to pay for are fare. So want you let us pay. Then you will have the money.”

**Response to Comments #5 - #11**

Thank you for your recent comment regarding the proposed 2025 2<sup>nd</sup> Quarter Amendment to the 2024-2028 Transportation Improvement Program. We shared your comments with area transit providers, the MARC Total Transportation Policy Committee and the MARC Board of Directors for their consideration.

In 2025, MARC and partners will advance a [Smart Moves Transit and Mobility Plan Update](#). This plan details the transit system vision for the Kansas City area. This plan update will include an assessment of existing services, prioritization of existing and new routes services and programs, identification of potential capital and operating costs for system enhancement and review of governance and funding models for system enhancement. This work will be conducted with the assistance of local stakeholders and the public. We encourage your involvement and input once this work is underway.

We look forward to your continued participation in the regional transportation planning process and encourage you to review the [Guide to Transportation Decision Making](#). This guide is designed to help area residents understand the complex process of transportation decision making and learn how they can more effectively provide input.

Sincerely,

Marc Hansen, AICP  
Principal Planner  
Mid-America Regional Council

## AGENDA REPORT

### MARC Board of Directors

April 2025  
Item No. 7c

### Efficient Transportation and Quality Places

**ISSUE:**

VOTE: Approve the 2025 Unified Planning Work Program - Amendment #2.

**BACKGROUND:**

The Unified Planning Work Program (UPWP) describes the transportation planning activities the Mid-America Regional Council (MARC) and other agencies will undertake during the year; documents the proposed expenditures of federal, state and local funds in support of applications for various planning grants; and provides a management tool for MARC and the funding agencies in scheduling major transportation planning activities, milestones and products.

The proposed 2025 UPWP Amendment #2 will make the following modifications:

Adjust the 2025 funding for 3 projects to reflect current needs and allow for study completion.

- 5.10 Regional Freight Plan - Reduce 2025 funding by \$50,435.37 to a total of \$224,564.63 to match the actual amount needed for study completion
- 3.1 Modeling/Forecast Activities - Reduce 2025 funding for contractual activities by \$13,775.54. This reduction will not reduce the scope of work proposed in the UPWP.
- 5.9 Natural Hazard Transportation Risk Assessment - Increase funding by \$64,210.91 to a total of \$109,210.91 to match the amount needed for study completion.

Revise Appendix D as necessary to account for these revisions.

The revisions are attached for review. These revisions shift funding between previously approved activities to more accurately address the current needs and do not change the overall amount of MARC planning funds. No comments from the public were received during the comment period.

**BUDGET CONSIDERATIONS:**

None.

**EXHIBITS:**

[Amendment #2](#)  
[UPWP Appendix D - Schedule 1](#)

**RELATED JURISDICTIONS:**

This item impacts all counties in the MARC region.

**RECOMMENDATION:**

Approve Amendment #2 to the 2025 Unified Planning Work Program.

**STAFF CONTACT**

Marc Hansen, Principal Planner

**2025 Unified Planning Work Program  
Amendment #2 – Budget Adjustments**

**3.1 Modeling/Forecasting Activities – Lead Agency: MARC**

Objectives

- Development and refinement of model methodology and ensure MARC’s state of the art modeling analysis tool to support regional goals and objectives adopted by the MARC Board of Directors.
- Implement advance modeling development in response to priority policy analysis and comprehensive regional planning questions.
- Provide regional travel forecast and modeling analysis to partners.

\*Reduce funding by \$13,775.54 and shift funds to task 5.9

<u>Funding</u>	<u>Existing</u>	<u>Amended</u>	
Federal	\$1,703,129	<b>\$1,689,541</b>	FHWA/FTA CPG
Non-Federal	<u>\$ 23,671</u>	<b><u>\$ 23,483</u></b>	
Task Total	\$1,726,800	<b>\$1,713,024</b>	

**5.9 Natural Hazard Transportation Risk Assessment – Lead Agency: MARC**

Objectives

This work will launch a phased, multi-year study to conduct detailed analysis about:

- The risks to the region’s transportation system due to extreme weather and other natural hazards.
- Opportunities to mitigate community risks caused by the region’s transportation system.

\*Increase funding by \$64,210.91 using funds shifted from tasks 3.1 and 5.10

<u>Funding</u>	<u>Existing</u>	<u>Amended</u>	
Federal	\$44,383	<b>\$107,714</b>	FHWA/FTA CPG
Non-Federal	<u>\$ 617</u>	<b><u>\$ 1,497</u></b>	
Task Total	\$45,000	<b>\$109,211</b>	

**5.10 Regional Freight Plan – Lead Agency: MARC**

Objectives

Conduct a freight planning study that provides the current state and relative future of freight movement for the Lawrence-Douglas County MPO, Pioneer Trails (RPC) and MARC’s planning regions. The study will also develop a proactive planning process for port authorities, regional planning commissions (RPCs) and metropolitan planning organizations (MPOs) to identify, select and prioritize local, regional, state, and national multimodal freight projects.

\*Reduce funding by \$50,435.37 and shift funds to task 5.9

<u>Funding</u>	<u>Existing</u>	<u>Amended</u>	
Federal	\$271,230	<b>\$221,487</b>	FHWA/FTA CPG
Non-Federal	<u>\$ 3,770</u>	<b><u>\$ 3,078</u></b>	
Task Total	<b>\$275,000</b>	<b>\$224,565</b>	

**APPENDIX D - SCHEDULE 1  
DETAIL OF PLANNING PROGRAM BY STATE (FHWA PL AND FTA SEC 5305(d))**

Work Element	STATE and LOCAL				Federal				Total	
	MARC	KDOT	MoDOT	Other	CPG Funds		Other			
					KDOT	MoDOT	Amount	Agency		
1.1	Transportation Administration	\$8,564				\$210,386	\$405,800		\$624,750	
1.2	Public Participation	\$3,564				\$87,555	\$168,881		\$260,000	
2.1	Land Use, Demographic & Comprehensive Planning	\$7,888				\$193,766	\$373,746		\$575,400	
2.2	Metropolitan Transportation Plan	\$4,032				\$99,056	\$191,062		\$294,150	
3.1	Transportation Modeling/Forecasting	\$23,483				\$576,863	\$1,112,678		\$1,713,024	
3.2	Transportation Research & Database Management	\$8,517				\$209,223	\$403,560		\$621,300	
3.3	Air Quality Planning	\$1,543				\$37,901	\$73,106		\$112,550	
3.4	Safe and Accessible Transportation Options	\$6,964				\$171,069	\$329,967		\$508,000	
3.5	Complete Streets Activities <sup>1</sup>					\$274,935	\$509,565		\$784,500	
3.6	Transportation Technology	\$612				\$15,043	\$29,015		\$44,670	
3.7	Transportation Safety Planning	\$1,530				\$37,588	\$72,502		\$111,620	
3.8	Congestion Management System	\$909				\$22,326	\$43,065		\$66,300	
3.9	Performance Measurement & Target Setting	\$1,222				\$30,022	\$57,906		\$89,150	
4.1	Transportation Improvement Program	\$2,920				\$71,727	\$138,353		\$213,000	
5.1	RideKC Short-Range and Ongoing Transportation Planning				\$80,000		\$0	\$400,000	FTA 5307	\$480,000
5.2	RideKC Long-Range Transit and Capital Planning				\$130,000		\$0	\$650,000	FTA 5307, 5309	\$780,000
5.3	Goods Movement/Freight Planning	\$1,266				\$31,108	\$60,001		\$92,375	
5.4	Corridor Studies	\$173				\$4,242	\$8,185		\$12,600	
5.5	Aviation Planning	\$38				\$925	\$1,787		\$2,750	
5.6	MoDOT Traffic Studies			\$350,000					\$350,000	
5.7	RideKC Bi-State Green Corridor Planning Investments <sup>2</sup>							\$514,045	FTA Route Planning Restoration	\$514,045
5.8	RideKC Funding for Zero-Fare: Evaluating the Health and Economic Impacts <sup>2</sup>				\$55,555			\$500,000	FTA Areas of Persistent Poverty	\$555,555
5.9	Natural Hazard Transportation Risk Assessment <sup>2</sup>				\$1,497	\$36,777	\$70,937		\$109,211	
5.10	Regional Freight Plan <sup>2</sup>				\$3,078	\$75,623	\$145,864		\$224,565	
5.11	Bi-State Sustainable Reinvestment Corridor <sup>2</sup>				\$500,000			\$2,000,000	RAISE	\$2,500,000
5.12	Reconnecting Kansas City: Repairing Connections for Kansas City's Westside Neighborhood <sup>2</sup>				\$264,655			\$1,058,620	FHWA Reconnecting Communities Pilot Program	\$1,323,275
5.13	US-71 Reconnecting Neighborhoods <sup>2</sup>				\$2,500,000			\$5,000,000	FHWA-RAISE	\$7,500,000
5.14	Long Range Transportation Planning: Johnson County Transit Strategic Plan <sup>2</sup>				\$76,000			\$304,000	FTA-5307	\$380,000
5.15	Destination Safe Comprehensive Safety Action Plan <sup>2</sup>	\$40,750	\$29,250		\$30,000			\$400,000	FHWA-SS4A	\$500,000
5.16	KC Streetcar Extension Study				\$1,000,000					\$1,000,000
F.1	Operation Green Light				\$850,000			\$850,000	FHWA STBG	\$1,700,000
F.2	Air Quality Public Education				\$138,750			\$555,000	FHWA CMAQ	\$693,750
F.3	WAY TO GO							\$300,000	FHWA CMAQ	\$300,000
F.4	Active Transportation Programs				\$18,000			\$72,000	FHWA CMAQ	\$90,000
F.5	Planning Sustainable Places Program				\$405,000			\$1,620,000	FHWA STBG	\$2,025,000
F.6	Nation Road and 162nd Street Intersection (east) Safety and Operational Analysis				\$3,000			\$12,000	FHWA TEAP	\$15,000
F.7	Bynum Road Crosswalk Study				\$2,900			\$11,600	FHWA TEAP	\$14,500
F.8	Crooked Road Corridor Study				\$3,000			\$12,000	FHWA TEAP	\$15,000
		\$113,975	\$29,250	\$350,000	\$6,061,435	\$2,186,135	\$4,195,980	\$14,259,265		\$27,196,040

(1) Federal funds in this task are 100% federal and are not factored into match requirement calculations.

(2) Study was initiated in a prior year and extends into 2025.

## AGENDA REPORT

---

MARC Board of Directors

April 2025

Item No. 7d

Efficient Transportation and Quality Places

### ISSUE:

VOTE: Authorize consultant agreements for four 2025 Planning Sustainable Places studies.

### BACKGROUND:

For studies funded through Planning Sustainable Places (PSP), the Mid-America Regional Council (MARC) will hold the contracts on individual projects, although the project leads and local match will be provided by the local sponsors. Details for the projects are provided below. A qualifications-based competitive selection process was used in the selection of all consulting teams.

#### Basehor, KS - Basehor Town Center Trail and Recreation.

This study focuses on the planning for a 240-acre study area that will serve as the future Basehor downtown and plan for its future transportation infrastructure, trails, parks and other amenities. The final report will include a list of strategies and recommendations including potential funding mechanisms and strategies for implementation. The initial release of the RFP received a single submittal. The RFP was reviewed and rereleased but garnered a single submittal again. The responding team was interviewed to ensure alignment of the city and proposing firm's understanding of the study. Key components of the plan will include:

- **Trail Network Integration:** Establish an extensive, connected trail system within Basehor Town Center (BTC), linking to Basehor's existing downtown, Civic Campus, and the regional Metro Green Trail. This will promote active transportation options and foster connectivity throughout the city.
- **Sustainable Mixed-Use Development:** Implement a mixed-use development plan that balances commercial, residential, and recreational spaces, ensuring economic vitality and sustainable growth. The design will include housing options for various age groups and incomes while promoting a pedestrian-friendly environment.
- **Parks and Recreational Amenities:** Develop over 40 acres of parkland and recreational spaces within BTC, responding to community requests for expanded parks. These areas will host year-round events, provide gathering spaces, and offer both indoor and outdoor recreational opportunities.
- **Community Engagement and Economic Growth:** Foster public participation to align the development with local needs while driving job creation and attracting visitors through amenities like the community center, farmers market, and future commercial ventures.
- **Shared-Use Infrastructure and Accessibility:** Plan for shared-use parking facilities to accommodate downtown and BTC visitors, improving accessibility and encouraging foot and bike traffic between the areas. Ensure that all parks, trails, and public spaces are designed to be accessible and inclusive for all ages and abilities.

The consulting team of BHC, RDG Planning & Design, and Venice Communications was selected for this study.

#### Bonner Springs, KS - Bonner Springs Connectivity and Walkability Plan.

This study will identify valuable connections throughout Bonner Springs - to parks, activity/retail centers, downtown, or to job opportunities outside the city limits. Project deliverables will include an existing conditions assessment, and recommended improvements

## AGENDA REPORT

---

### MARC Board of Directors

with funding sources. Proposals from two prospective consulting teams were received. The two teams were interviewed. Key components of the plan will include:

- Evaluate connections (bike/ped): assess current - including condition, identify missing routes and connections, recommend improvements both to condition and new connections.
- Develop recommendations to improve connections (bike/ped).
- Examine and develop recommendations for transit both within and connecting Bonner Springs to the greater region.

The consulting team of Lamar Johnson Collaborative and Trekk Design Group, LLC was selected for this study.

#### Overland Park, KS - Overland Park Wayfinding Master Plan.

This study will develop a new wayfinding program to facilitate navigation and improve the trail user experience. The recommendations will address navigation, generalized placement, safety, enhance accessibility, encourage active transportation, boost engagement, support economic activity and strengthen the Overland Park brand/identity. The final report will include a recommendations including potential funding mechanisms and budget. Proposals from six prospective consulting teams were received. A shortlisting process was conducted with Four teams interviewed. Key components of the plan will include:

- **Definition:** Identify locations for all new signage located along the Indian and Tomahawk creek trail in accordance with other surrounding cities mile markers. Use clear symbols, color coding for different routes and difficulty levels. Provide multilingual or universally recognizable icons for users.
- **Safety and Accessibility:** Design signs that comply with ADA standards. Include reflective materials, emergency call locations or stations.
- **Connectivity:** Include maps, distances, restrooms, parking, landmarks and surrounding amenities. Integrate digital tools such as QR codes or apps for real-time navigation and updates. Show connections to public transportation, nearby attractions and overall trail networks.
- **User engagement:** Include educational or interpretive information about the environment, local culture, history or natural features.

The consulting team of Toole Design Group LLC and Venice Communications was selected for this study.

#### Kansas City Area Transportation Authority - Blue Ridge TOD and Transit Center Study.

This study will identify three locations for transit oriented development along with conducting an existing conditions analysis, broad stakeholder and community engagement, assess market conditions, and provide a TOD Development Plan for the KCATA #28 Blue Ridge transit route. The final deliverable will include goals and implementation strategies. Proposals from three prospective consulting teams were received. The three teams were interviewed. Key components of the plan will include:

- Identify potential TOD sites along the corridor.
- Analyze current land use and transportation infrastructure.
- Engage stakeholders and the community in the planning process.
- Identify 3 locations on the Blue Ridge Transit Corridor for a TOD with Transit Center, with one location being Blue Ridge Crossing.
- Develop a strategic plan for TOD implementation.
- Recommend policy changes and incentives to support TOD.

The team of WSP, Vireo and Confluence was selected for this study.

## AGENDA REPORT

---

### MARC Board of Directors

#### **BUDGET CONSIDERATIONS:**

The projects will use Planning Sustainable Places (Federal STP) funding with a required local match as follows:

Basehor, KS: Planning Sustainable Places (Federal STP) funding (\$34,000) with the required local match of \$41,000 provided by the City of Basehor.

Bonner Springs, KS: Planning Sustainable Places (Federal STP) funding (\$58,500) with the required local match of \$21,500 provided by the City of Bonner Springs.

Overland Park, KS: Planning Sustainable Places (Federal STP) funding (\$57,600) with the required local match of \$20,400 provided by the City of Overland Park.

Kansas City Area Transportation Authority: Planning Sustainable Places (Federal STP) funding (\$142,000) with the required local match of \$37,500 provided by the Kansas City Area Transportation Authority.

#### **COMMITTEE ACTION:**

The MARC Board authorized the award of the PSP funds for the project and the receipt of its local match on September 24, 2024.

#### **RELATED JURISDICTIONS:**

The consultant contracts involve the jurisdictions of: Basehor, KS; Bonner Springs, KS; Overland Park, KS; and the Kansas City Area Transportation Authority service area.

#### **RECOMMENDATION:**

Authorize the following agreements:

Basehor, KS: Agreement with BHC for the Basehor Town Center and Recreation study for an amount not to exceed \$75,000.

Bonner Springs, KS: Agreement with Lamar Johnson Collaborative for the Bonner Springs Connectivity and Walkability Plan for an amount not to exceed \$79,821.01.

Overland Park, KS: Agreement with Toole Design Group LLC for the Overland Park Wayfinding Master Plan for an amount not to exceed \$77,999.81

Kansas City Area Transportation Authority: Agreement with WSP for the Blue Ridge TOD and Transit Center Study for an amount not to exceed \$179,268.82

#### **STAFF CONTACT:**

Beth Dawson, Principal Planner

# AGENDA REPORT

MARC Board of Directors

April 2025  
Item No. 7e  
Healthy Environment

**ISSUE:**

VOTE: Approve receipt of funds from the Institute for Market Transformation for educational resources for building owners.

**BACKGROUND:**

Building Performance Standard Pathway Alternatives and Training Hubs Program (PATH) is a Department of Energy grant that supports the development of technical tools for improving the energy performance of buildings in the Kansas City metro area. In partnership with the Institute for Market Transformation and nonprofit building performance hubs across the country, this grant provides Kansas City metro building owners access to specialized technical resources to support energy efficiency and renewable upgrades to their buildings including connecting projects a growing workforce pipeline of service providers.

Mid-America Regional Council (MARC) will be contracted as a subrecipient with the Institute for Market Transformation for \$200,000 over the grant period of Jan. 2025 - Dec. 2027 to support educational resources for building owners.

**BUDGET CONSIDERATIONS:**

REVENUES	
Amount	\$200,000
Source	Institute for Market Transformation
PROJECTED EXPENSES	
Personnel (salaries, fringe, rent)	
Contractual	\$200,000
Pass-Through	
Other (supplies, printing, etc.)	

**RECOMMENDATION:**

Approve receipt of funds from the Institute for Market Transformation for \$200,000 for work to be performed over the course of Jan. 2025 - Dec. 2027 to support educational resources for building owners.

**RELATED JURISDICTIONS:**

This item impacts building owners in all counties of the MARC region.

**STAFF CONTACT:**

Tom Jacobs, Environment Director  
Ashley Sadowski, Building and Energy Program Director



# AGENDA REPORT

MARC Board of Directors

April 2025  
Item No. 7f  
Quality Early Learning

**ISSUE:**

VOTE: Approve renewal of Mid-America Regional Council’s contract for the Learning Genie platform to support Head Start child outcomes.

**BACKGROUND:**

The Learning Genie application supports implementation of the Desired Results Developmental Profile (DRDP) early childhood assessment system. Learning Genie provides an electronic portfolio for each child in Head Start. Evidence of the children’s learning and development can be entered into portfolios by educators, who are able to connect the evidence to DRDP measures. Educators can also rate children’s progress on each measure three times each year and run child outcomes reports for individuals and groups. This assessment of children’s progress and reporting of child outcomes is required for Head Start grantees. Children’s learning plans are adjusted when deficiencies are reported in order assist the child to progress appropriately. The Mid-America Regional Council (MARC) Head Start program began contracting with Learning Genie in 2017. Learning Genie has customized the application to meet the needs of MARC Head Start providers and has provided effective technical support to educators.

**BUDGET CONSIDERATIONS:**

REVENUES	
Amount	\$60,480
Source	Administration for Children and Families
PROJECTED EXPENSES	
Personnel (salaries, fringe, rent)	
Contractual	\$60,480
Pass-Through	
Other (supplies, printing, etc.)	

**RELATED JURISDICTIONS:**

Clay, Jackson and Platte counties in Missouri are impacted by this item.

**EXHIBITS:**

None.

**RECOMMENDATION:**

Approve the Learning Genie contract from July 1, 2025 - June 30, 2026 in the amount of \$60,480.

**STAFF CONTACT:**

Kasey Lawson, Head Start Director  
Dr. Toni Sturdivant, Director of Early Learning

## AGENDA REPORT

---

### MARC Board of Directors

April 2025  
Item No. 7g  
Quality Early Learning

#### **ISSUE:**

VOTE: Authorize contract amendment and lease negotiations with a current Head Start partner to occupy the Thomas Roque facility.

#### **BACKGROUND:**

On March 11, 2025, The YMCA of Greater Kansas City notified Mid-America Regional Council (MARC) that they will no longer continue with Head Start services in four locations that are located in the Missouri counties of Clay, Jackson, and Platte after May 2025. During this nearly 20-year partnership more than 8,000 children and families in the Kansas City region were provided services. MARC staff launched a Request for Qualification (RFQ) process to find new partners to serve the children and families for three of the four locations.

MARC is the owner of the fourth facility and has immediate responsibility for services there. Therefore, staff solicited responses from current Head Start providers to assume facility operations and early learning service. This separate process resulted in four current Head Start partners requesting a tour and expressing interest in operating at the Thomas Roque facility.

The MARC Head Start team created a standardized rubric, reviewed by MARC's Grants Compliance Manager, the Head Start Policy Council and Advisory Committee to assess each interested internal partner. The Head Start director and managers completed the rubric for each site. Assessment criteria included program philosophy, staffing, reimbursement rates, current enrollment, self-assessment data and child health and safety data. MARC staff are requesting authorization to enter into a contract with Guadalupe Centers who scored the highest during the assessment.

The Guadalupe Centers Early Childhood Center first opened its doors in 1985 and is accredited through the National Association for the Education of Young Children. Guadalupe Centers currently serves 96 Head Start children at its current location and would tentatively serve 126 Early Head Start and Head Start children if operations were moved to the Thomas Roque Facility.

If mutually agreeable terms for a contract amendment cannot be reached, we request permission to move forward with the next highest scoring current partner.

#### **COMMITTEE ACTION:**

The Head Start Policy Council and Advisory Committee approved this action on April 18, 2025.

#### **RELATED JURISDICTIONS:**

This item impacts Jackson County, Missouri.

#### **RECOMMENDATION:**

Authorize contract amendment and lease negotiations with a current Head Start partner to occupy the Thomas Roque facility.

## **AGENDA REPORT**

---

MARC Board of Directors

**EXHIBITS:**

None.

**STAFF CONTACT:**

Kasey Lawson, Head Start Director

Dr. Toni Sturdivant, Director of Early Learning

# AGENDA REPORT

MARC Board of Directors

April 2025  
Item No. 7h  
Safe and Secure Communities

## ISSUE:

VOTE: Approve an agreement with Bluebird Network to provide circuit connections supporting the Public Safety Answering Point at American Medical Response's new location.

## BACKGROUND:

The Mid-America Regional Council (MARC) 911 program provides emergency call delivery services to 43 Public Safety Answering Points (PSAPs) across an 11-county region. To ensure reliable and redundant connectivity, MARC 911 maintains two distinct pathways into each PSAP, ensuring uninterrupted call delivery in case of a network failure.

This agreement with Bluebird will establish the secondary circuit connections to support the relocation of American Medical Response's (AMR) PSAP. These new connections will ensure continued redundancy and system reliability at the new location.

The agreement with Bluebird Network is structured for a three-year (36-month) term with \$1,000 installation fee, per path and a monthly cost of \$660, resulting in a total cost of \$74,280 over the contract period.

<i>Location</i>	<i>Term</i>	<i>MRC</i>	<i>NRC</i>	<i>Total</i>
<i>Point A</i>	36	\$660.00	\$1,000.00	\$24,760.00
<i>Point B</i>	36	\$660.00	\$1,000.00	\$24,760.00
<i>Point C</i>	36	\$660.00	\$1,000.00	\$24,760.00
<b>Total</b>				<b>\$74,280.00</b>

## BUDGET CONSIDERATIONS:

Funding for these circuit connections is included in the 2025 911 Allocation Budget (Network) for the current and future fiscal years.	
<b>REVENUES</b>	
Amount	\$74,280
Source	911 Allocation Budget (Network)
<b>PROJECTED EXPENSES</b>	
Personnel (salaries, fringe, rent)	
Contractual	\$74,280
Pass-Through	
Other (supplies, printing, etc.)	

## COMMITTEE ACTION:

This expenditure is a routine, budgeted item within the 911 system Capital Projects plan and was approved by the Public Safety Communications Board on November 20, 2024.

## RELATED JURISDICTIONS:

This request directly supports American Medical Response's (AMR) PSAP relocation and strengthens the overall stability and reliability of the regional 911 network.

## **AGENDA REPORT**

---

MARC Board of Directors

**EXHIBITS:**

None.

**RECOMMENDATION:**

Approve the agreement with Bluebird Network to provide circuit connections for the AMR PSAP relocation at a total cost of \$74,280 over three years.

**STAFF CONTACT:**

Eric Winebrenner, Public Safety Communications Director