

Total Transportation Policy Committee meeting

September 16, 2025

Item #1

Welcome and introductions

Zoom attendees, please:

- **Sign into the chat box to register your attendance.**
 - **Use your full name for your screen name.**
 - **Mute your microphones unless speaking to the group.**
 - **Turn on your cameras when speaking to the group.**
 - **Type questions in the chat box.**
-

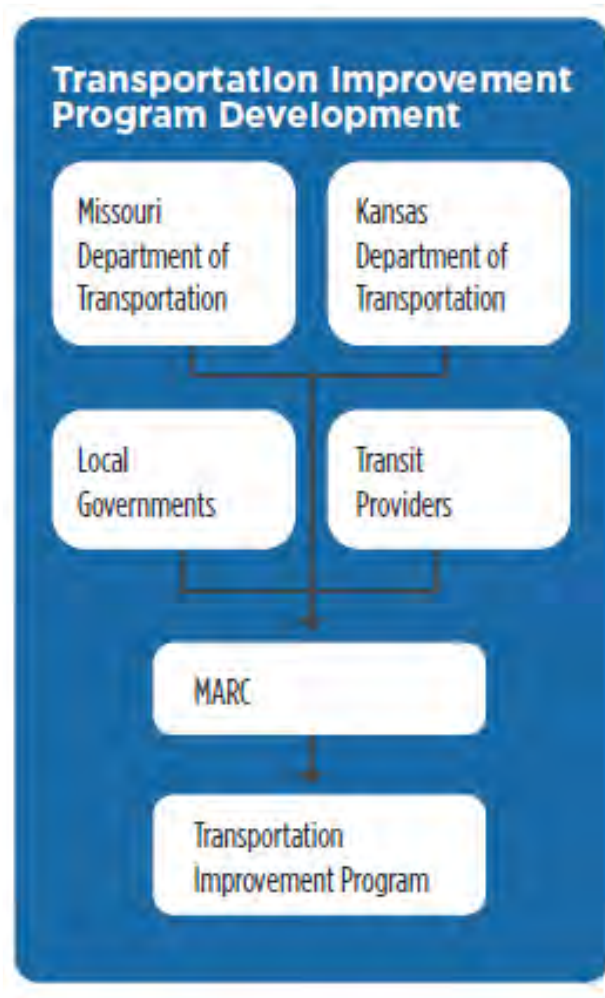
Item #2

VOTE: August 19, 2025, Meeting Summary

Item #3

VOTE: Draft 2026-2030 Transportation Improvement Program

Presenter: Marc Hansen, MARC



TIP Fundamentals

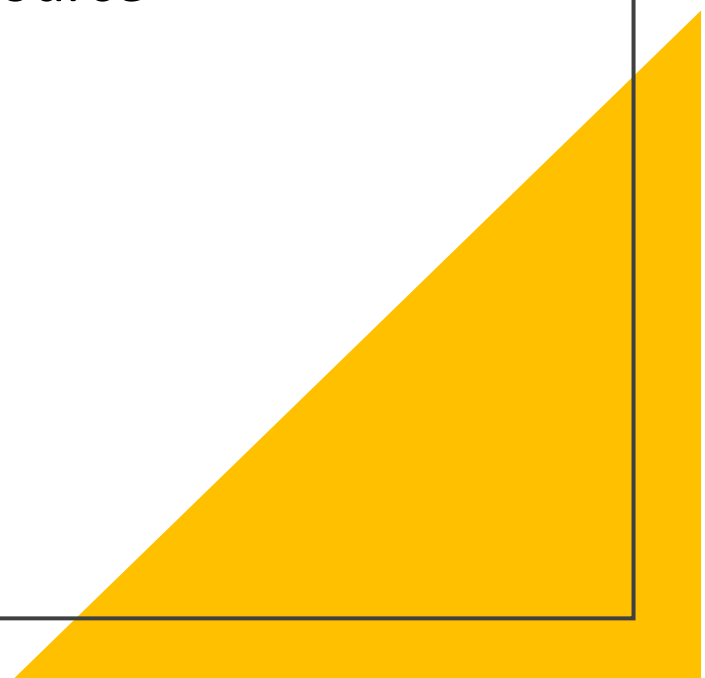
- One of the core products of the MPO process
- Short-range capital planning document
 - Covers a five-year period
 - Similar to a local government CIP
- Developed cooperatively
 - Local Governments
 - States
 - Transit Operators
- Amended quarterly
- Implements the policies & strategies of Connected KC 2050



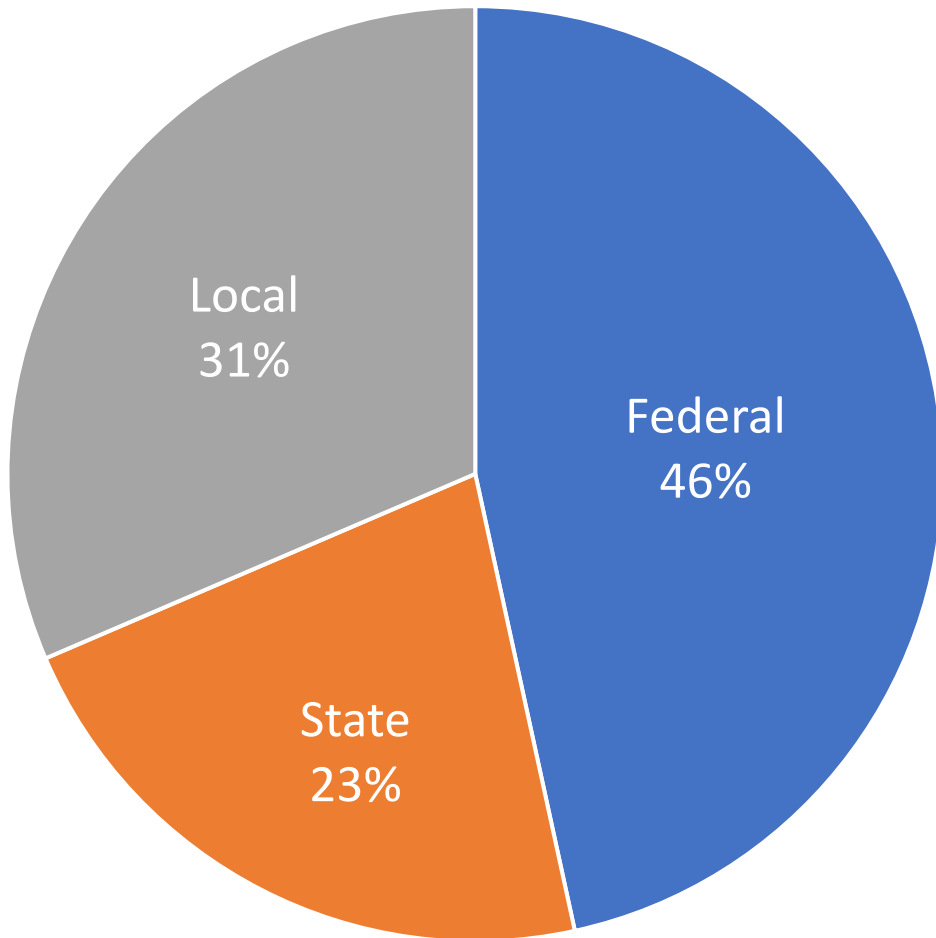
Connection to Connected KC 2050

- The 2026-2030 TIP is consistent with CKC 2050
 - ✓ Project Selection Processes
 - ✓ Programmed Projects
- CKC 2050 forms the financial foundation of the 2026-2030 TIP
- Translates the vision of CKC 2050 into specific projects & investments

TIP Contents

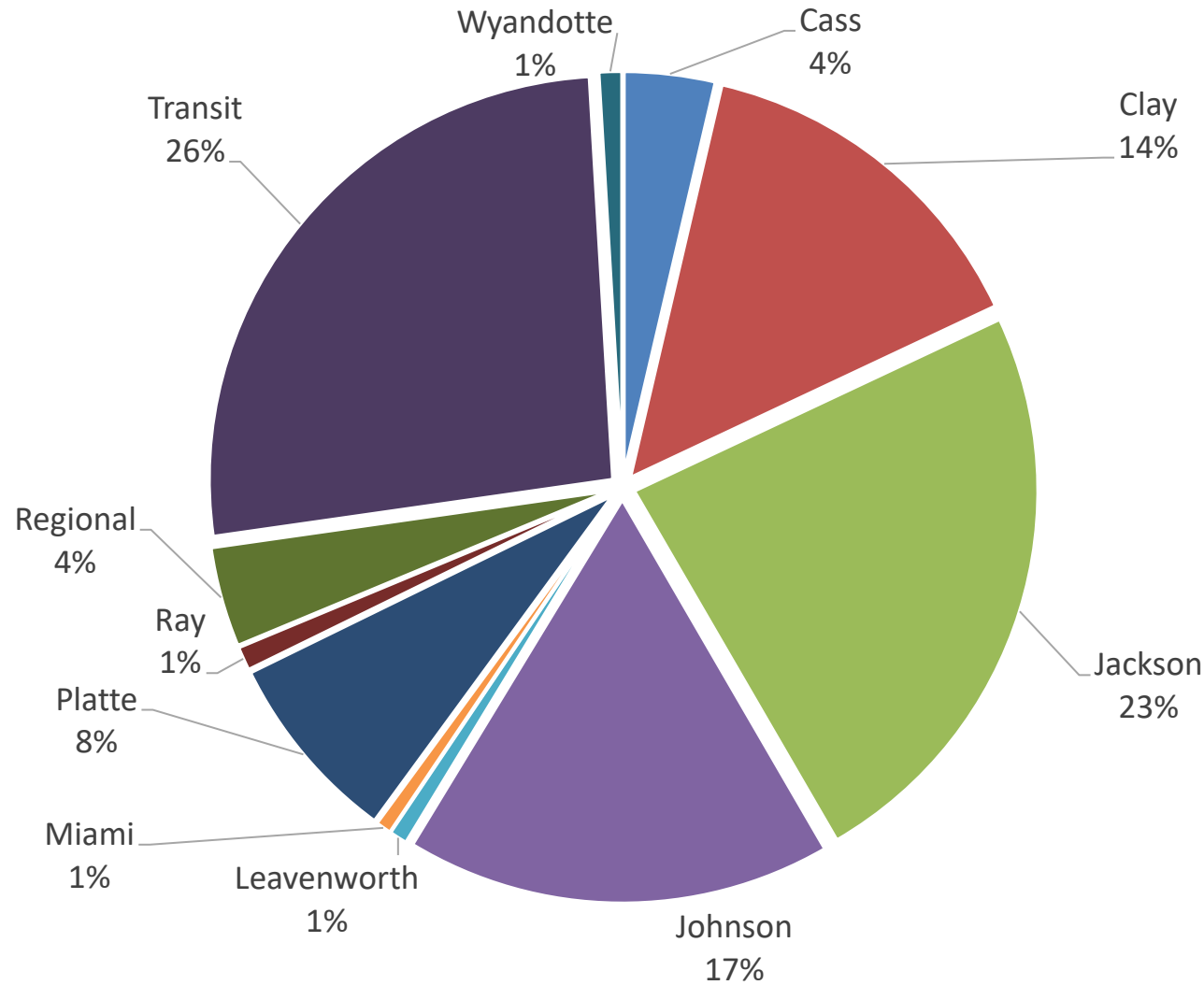
- Includes all surface transportation projects proposed to receive federal funding
 - All regionally significant projects, regardless of funding source
 - Project descriptive information
 - Fiscally constrained financial plan
 - Discussion of effect on performance targets
- 
- A large yellow triangle is positioned in the bottom right corner of the slide, pointing towards the top right.

2026-2030 TIP Details



- 54 Project Sponsors
- 441 Total Projects
- ~\$3.05B of documented expenditures

2026-2030 TIP Expenditures by County



Significant Projects

Transit

- #996071 - Fixed Route Line, Demand Responsive and BRT Service
KCATA - \$455,000,000
- #296001 – Unified Government Transit Service
KCATA - \$46,415,000

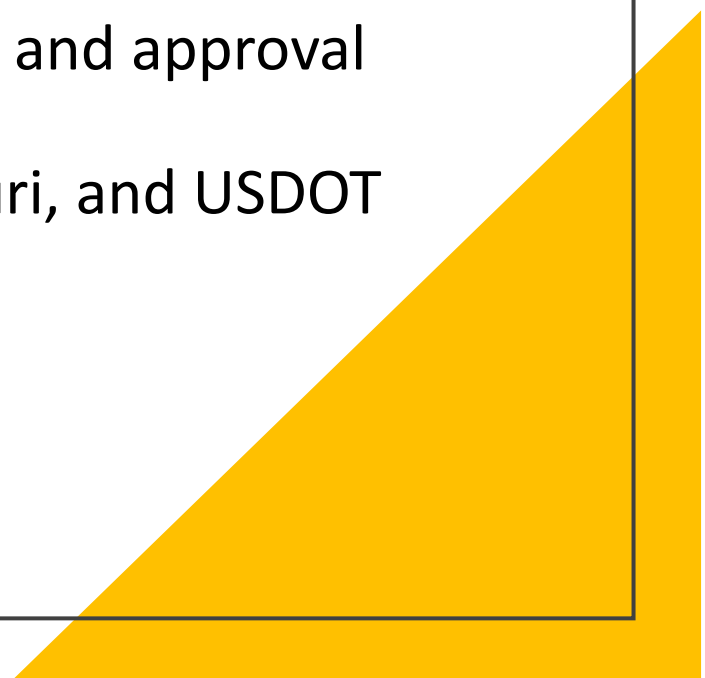
Road/Bridge

- #380232 – Johnson Co: I-35 and Santa Fe Interchange Improvement
KDOT - \$192,182,500
- #590295 – I-29; Bridge Rehabilitation over Guinotte Avenue
MoDOT - \$258,077,000
- #690374 I-49 – Rebuild & Add Lanes from 155th to M-58 in Belton
MoDOT - \$80,651,000

Non-Motorized

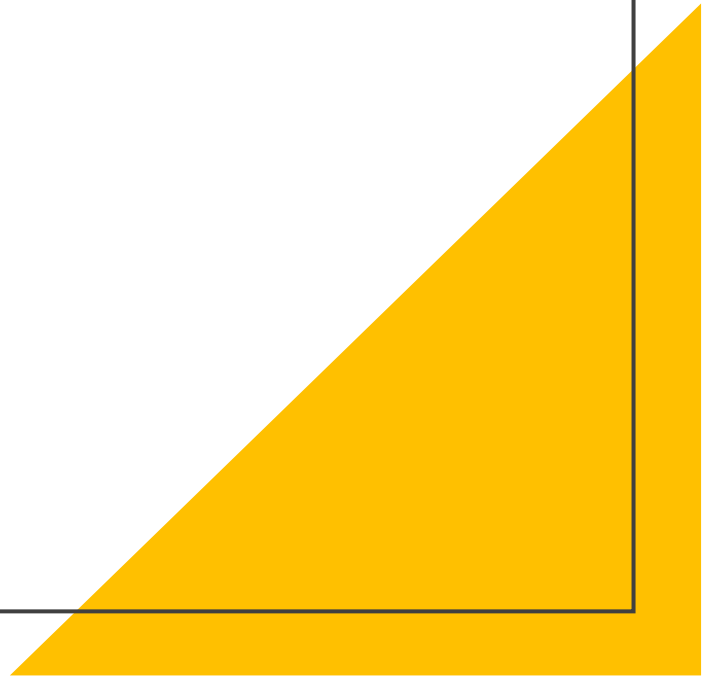
- #628153 – 23rd Street Mobility & Safety Improvement Project
Independence - \$13,800,920

Next Steps

- ✓ 9/16/2025 TTPC release for public review and comment
 - 10/21/2025 TTPC review of comments and approval of TIP
 - 10/28/2025 MARC Board review of comments and approval of TIP
 - November Approval of TIP by Kansas, Missouri, and USDOT
- 
- A large yellow triangle is positioned in the bottom right corner of the slide, pointing towards the top right.

Questions

Marc Hansen, AICP
Principal Planner
mhansen@marc.org
816/701-8317

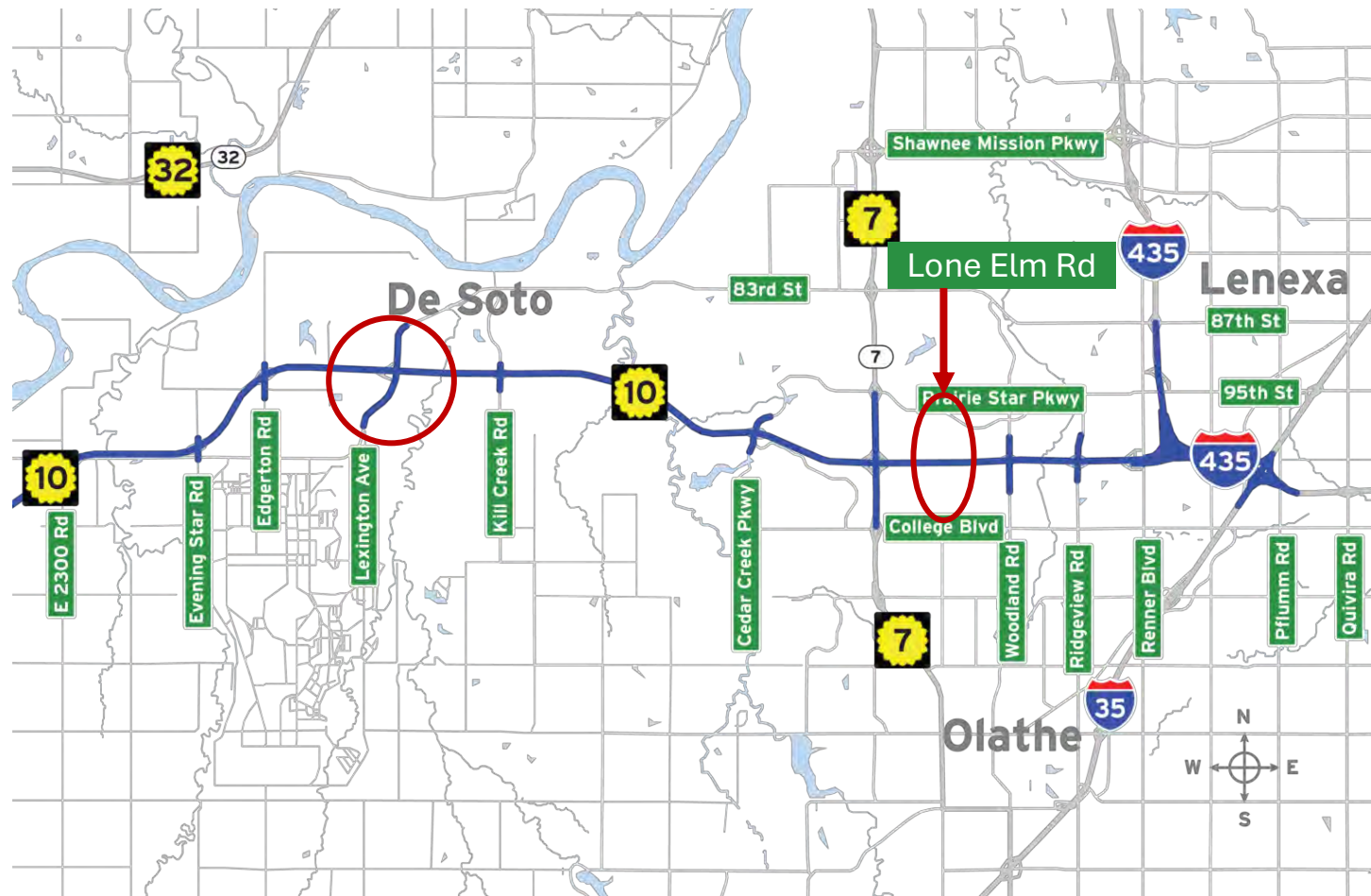


Item #4

VOTE: Connected KC 2050 Update Amendment #1

Presenter: Marc Hansen, MARC

KDOT MTP Amendment – Project #1592



KDOT MTP Amendment – Project #1592

Project ID	Project Location	Action	Anticipated Project Cost in MTP	
1592	K-10: from the Douglas/Johnson County line east to the K-10/I-435 interchange in Lenexa	N/A		\$500,000,000
	K-10: Lone Elm Rd with tie to the North and South auxiliary lanes along K-10 between K-7 and Woodland	KA-6549-03: Construction of a new interchange at K-10 and Lone Elm Road as determined by the discovery phase	\$40,930,750	
	K-10: Lexington Ave with tie to the North and South aux lanes along K-10 within De Soto city limits	KA-6549-04: Reconstruction of the interchange at K-10 and Lexington Avenue in Desoto as determined by the discovery phase	\$59,830,023	

Item #5

REPORT: Community Membership Update

- 4 Community Organization Seats
- 2-Year Terms
- Applications open July 15 – August 22
- 13 applications received

Item #5

2026-2027 Community Members



Item #5

Thank You!



Item #6

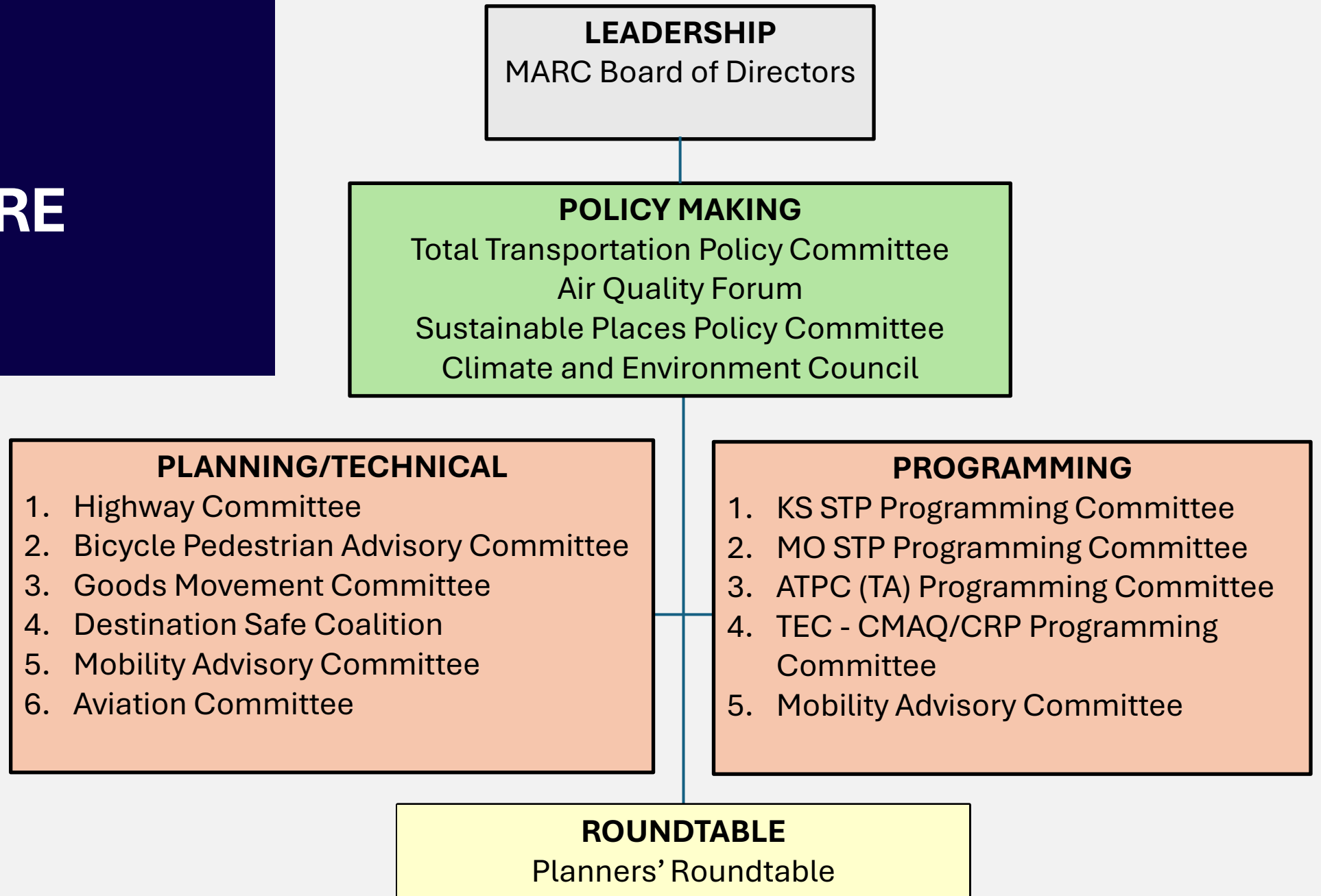
REPORT & DISCUSSION: MARC Transportation Committee & Process Update

Presenter: Ron Achelpohl, MARC

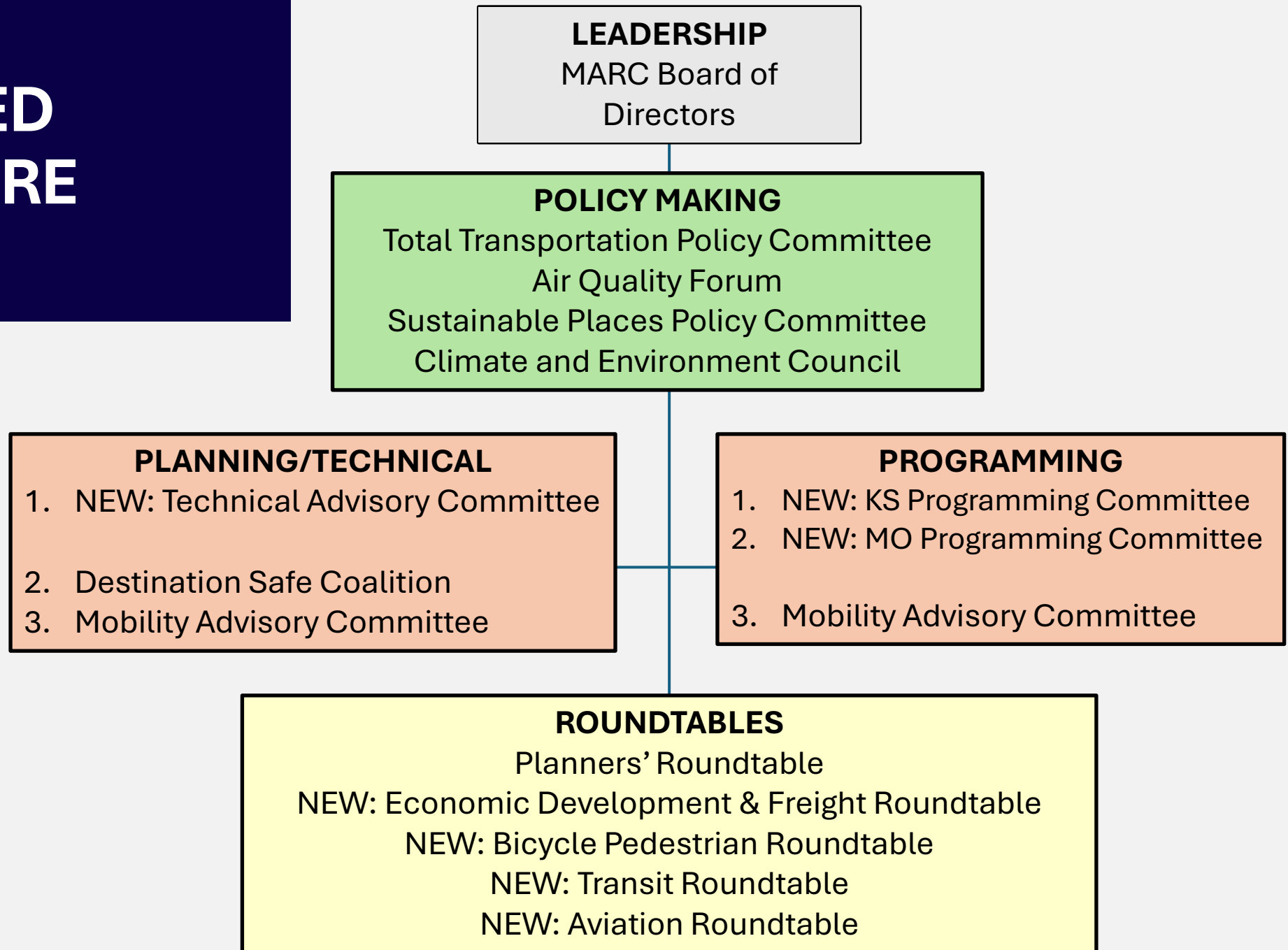
TIMELINE

- Committee leadership outreach: July/August
- TTPC and MARC Board Briefings: August
- Virtual workshops for committee members: August/September
- **Discussion with TTPC: Today**
- Recommendation to TTPC & MARC Board: October
- Recruit members & draft bylaws: October/December
- Convene new committees: Q1 2026

CURRENT STRUCTURE



PROPOSED STRUCTURE



Virtual Workshops

- 2 Virtual workshops (August 28 & Sept 3) for committee members:
 - 55 attended out of 92 registered RSVPs (60% participation)
 - 27 cities
 - 6 counties
 - FHWA / FTA / MODOT / KDOT
 - 10 private consulting / engineering / planning firms
 - 4 advocacy organizations
 - 3 economic development & business organizations

Virtual Workshops

- 2 Virtual workshops (August 28 & Sept 3) for committee members:
 - Cities and counties registered to attend:

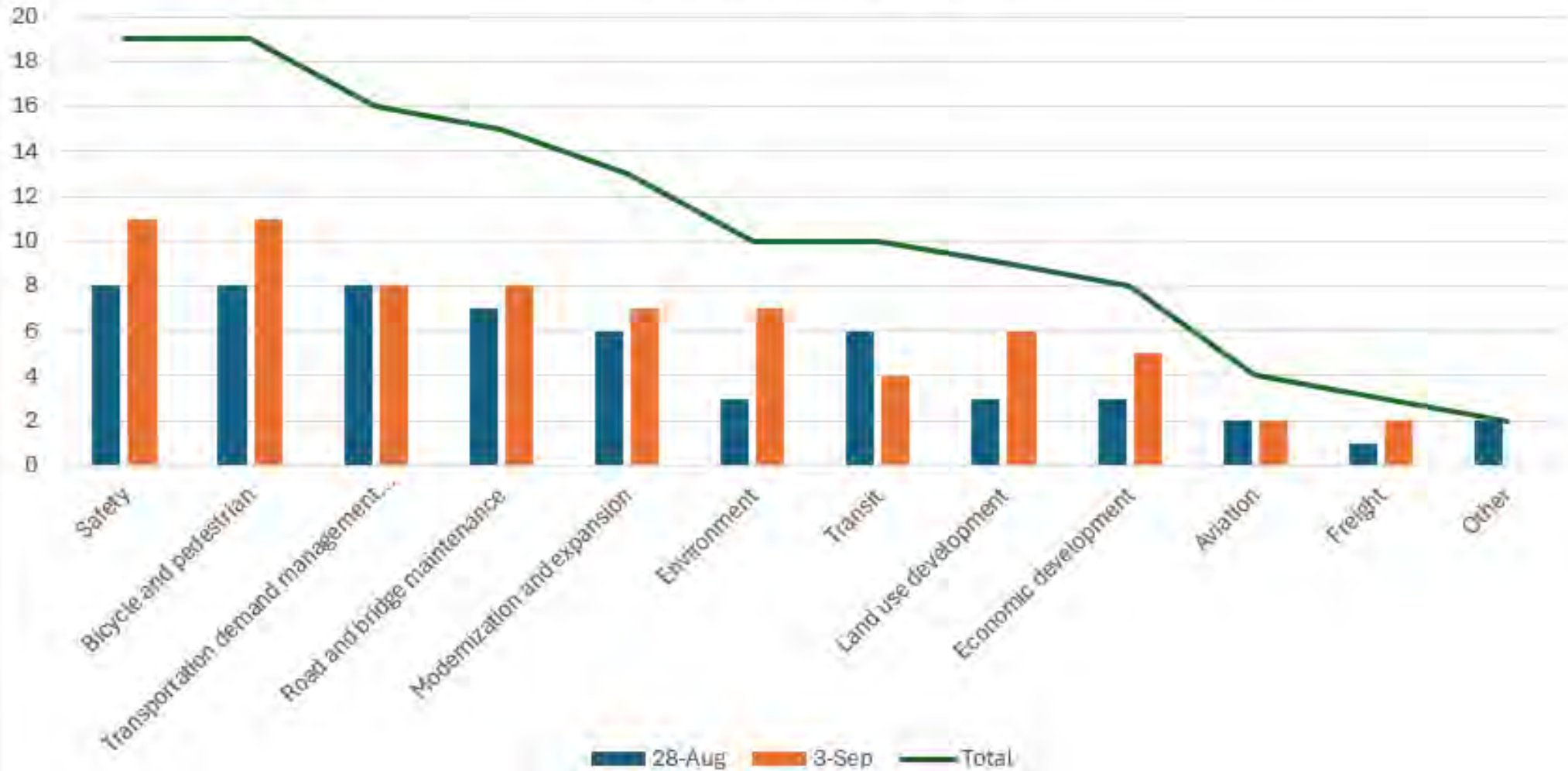
Basehor
Blue Springs
Bonner Springs
Clay County
Excelsior Springs
Gardner
Grain Valley
Independence
Jackson County
Johnson County
Kansas City, MO

Kearney
Lansing
Leavenworth County
Leawood
Lee's Summit
Lenexa
Liberty
Miami County
Mission
North Kansas City
Olathe

Overland Park
Platte City
Platte County
Prairie Village
Raytown
Riverside
Roeland Park
Shawnee
Smithville
Sugar Creek
Westwood

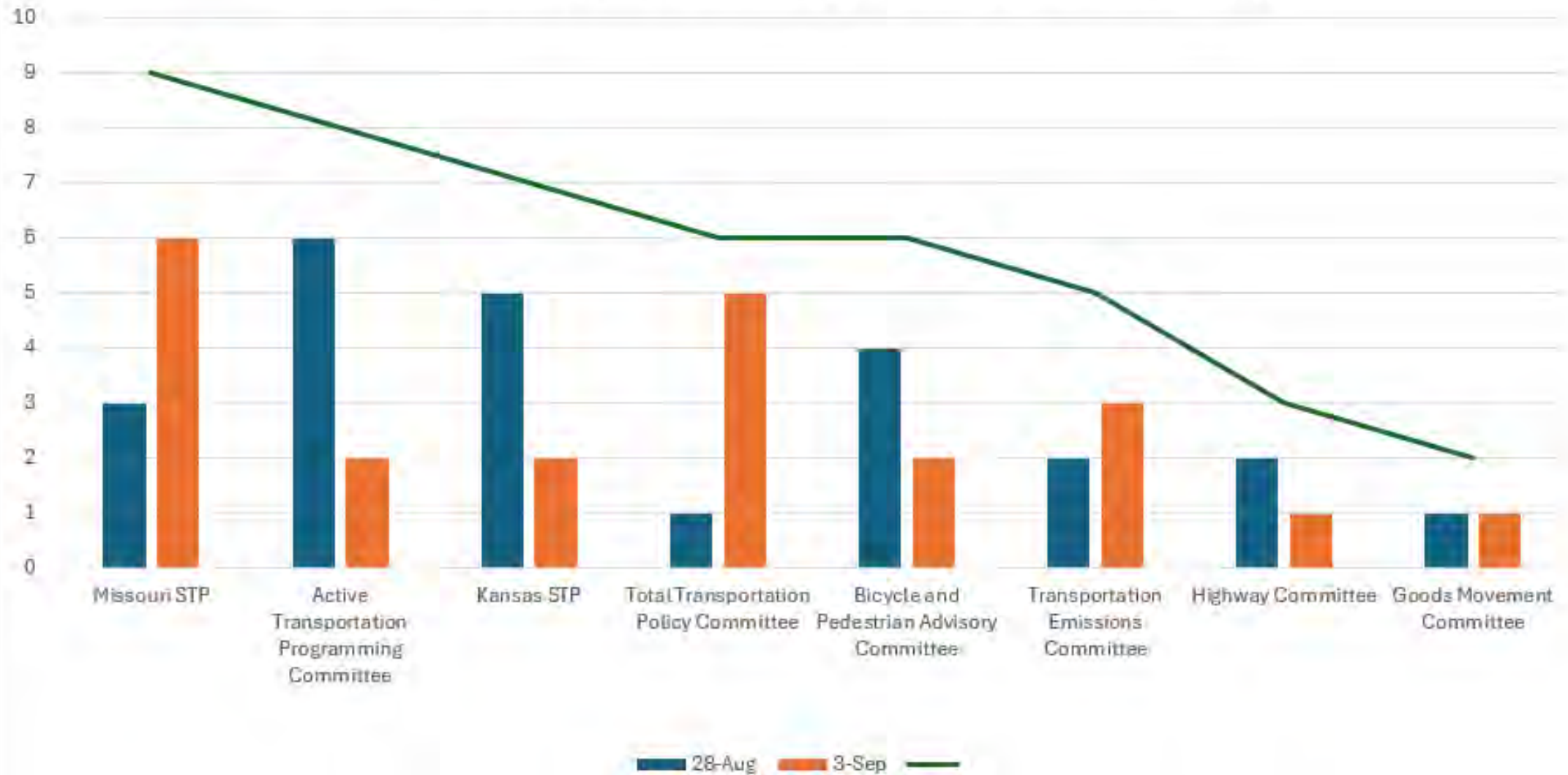
POLLING QUESTIONS

What are the interest groups you represent or topics you're interested in?
(Pick all that apply)



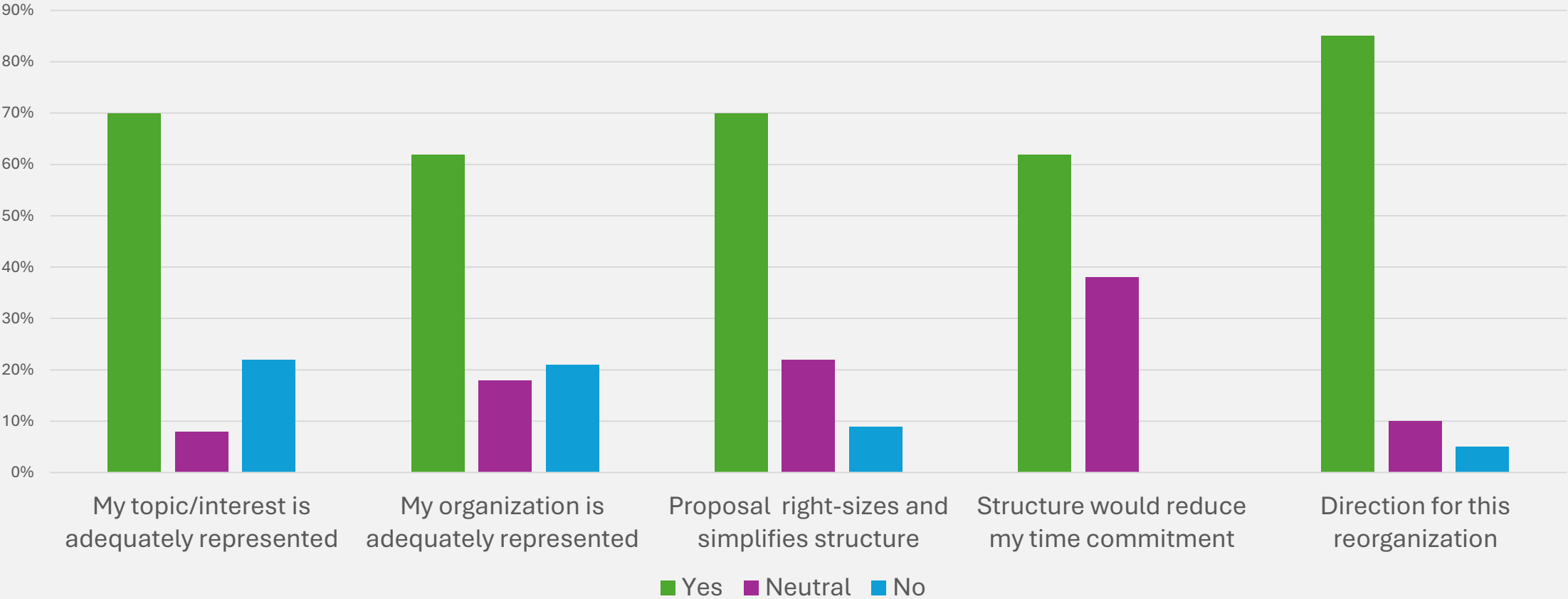
POLLING QUESTIONS

What committee(s) do you currently serve on? (Pick all that apply)



POLLING QUESTIONS

Agree / Disagree

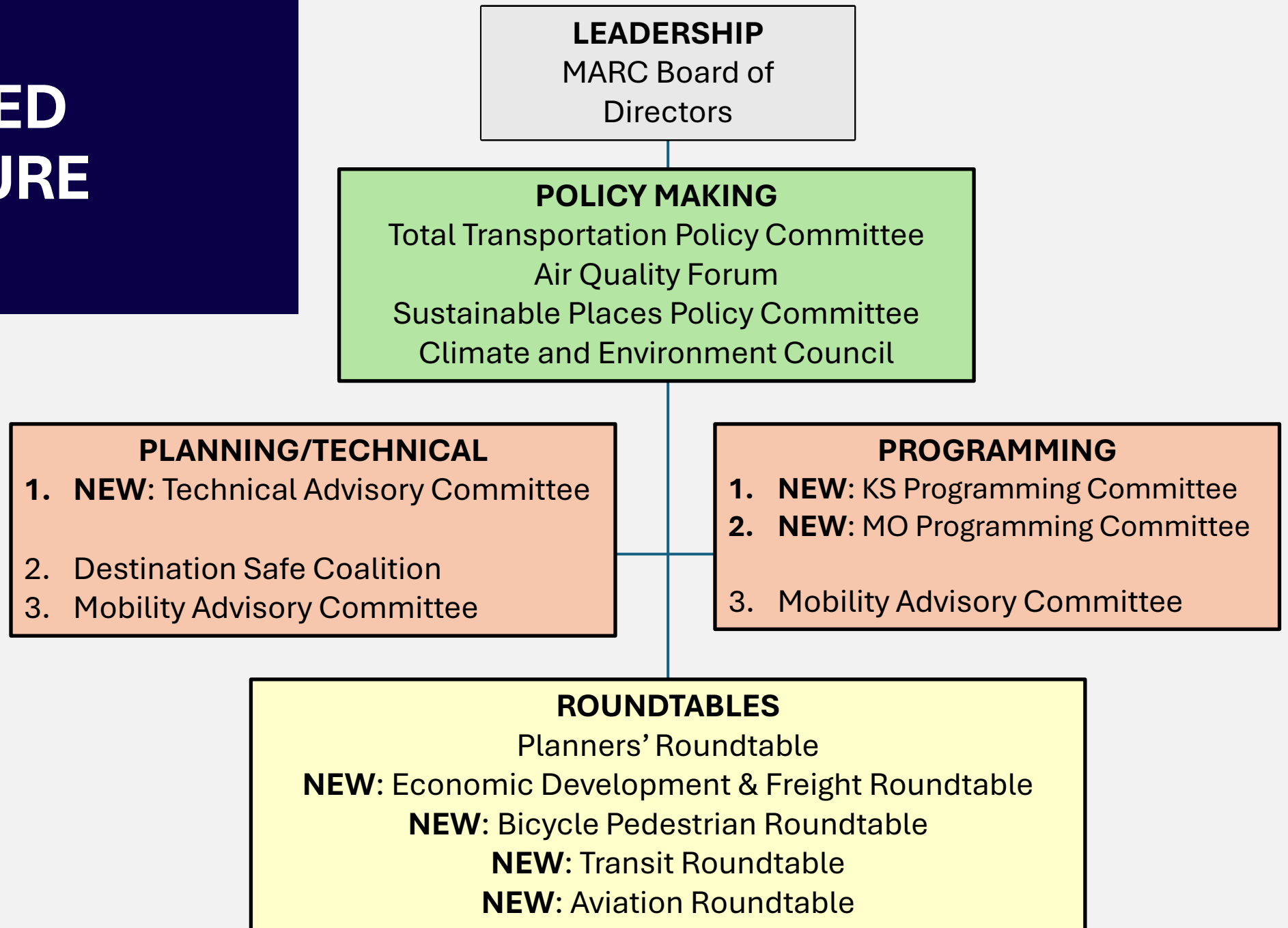


POLLING QUESTIONS

Any other thoughts you'd like to share with us?

- It's always good to evaluate everything periodically and update accordingly.
- Looks good just ensure small communities are still heard. Good work
- Thanks for your work on this. This should increase availability to keep tabs on all of the activities
- Thank you for the work on trying to streamline the processes.
- Thank you for working through this restructuring and working toward a goal of consolidation and less meetings.
- Thank you!! We appreciate everything MARC does for our community.
- A master plan for the whole Metro Area, 5, 10, 20 years from now is important to bring all the members to work together more. There may be one I don't know about
- Seems like Streetcar is given more priority than transit as a whole. Overall, good plan though. Seems to accomplish the objectives.
- Some concerns about being able to address topics in depth
- Have you considered grouping KC Streetcar with Group A?
- You got way to ensure that agencies with large #'s of seats are held accountable to fill those seats and have those meetings
- Concerned about the Group A/Group B majorities and proportional representation for MO STP. Small cities continue to be over-weighted in their representation under this structure.

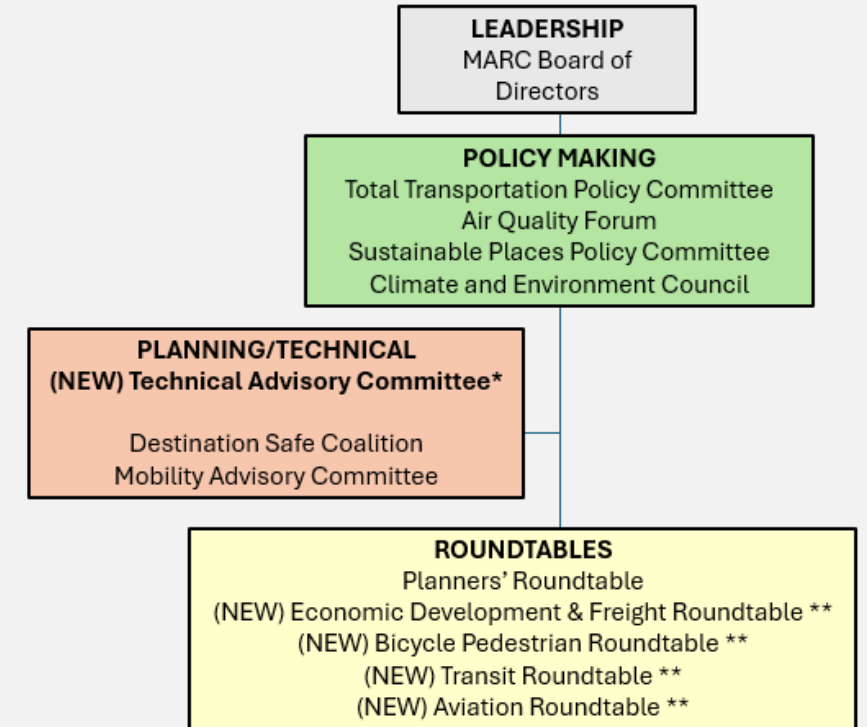
PROPOSED STRUCTURE



RECOMMENDED MEMBERSHIP

Technical Advisory Committee (TAC)

- 3 modal planning committees:
 - Current committee memberships
 - Highway = 29
 - Goods Movement = 17
 - BPAC = 23
- Consolidated into 1 committee + issue specific roundtables:
 - Future TAC committee membership
 - **Total = 33 ***



* **Note:** Committee membership would also include additional ex-officio membership of federal agency partners.

TECHNICAL ADVISORY COMMITTEE MEMBERSHIP

Goal — Ensure broad jurisdictional and topical representation

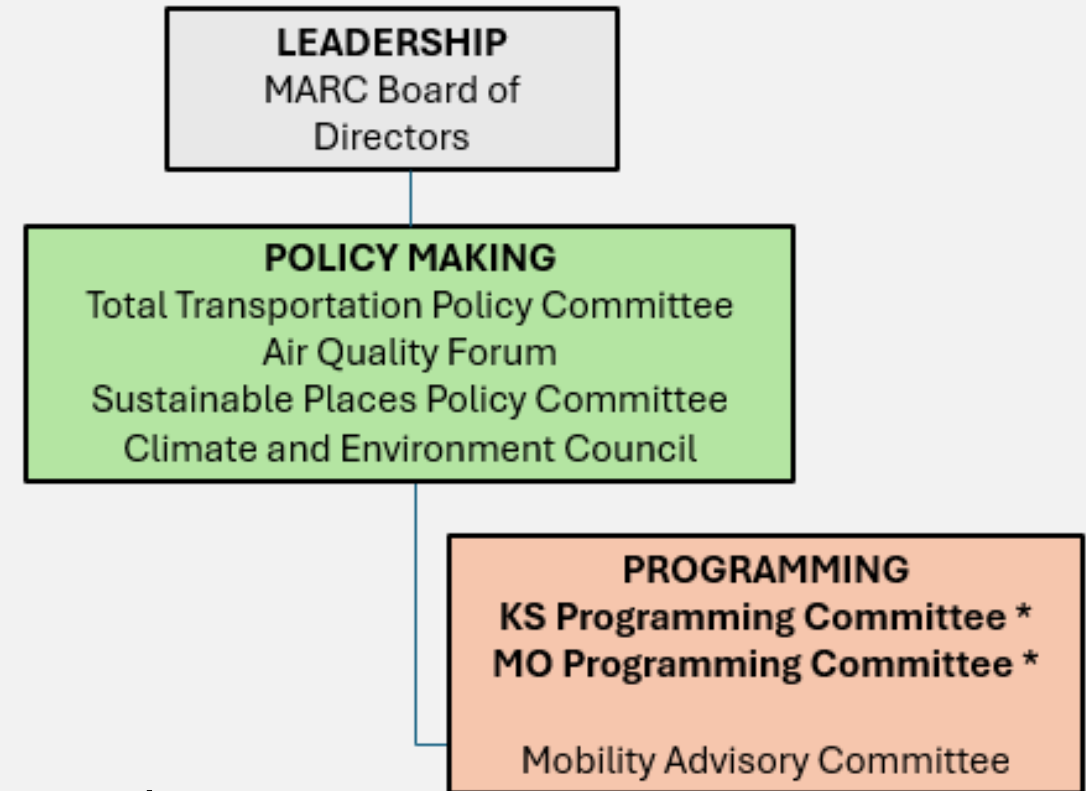
KS TTPC members	1 from each county	4
MO TTPC members	1 from each county	5
KDOT		1
MODOT		1
KCATA		1
KC Streetcar		1
Other transit (UG, JoCo, Ind)		1
KS city/county technical staff (non-TTPC) *		5
MO city/county technical staff (non-TTPC)*		5
Others *	Reps from non-governmental community organizations (bike/ped, environment, freight, business orgs, chambers, EDCs, etc.)	9
Total		33

*** Recruitment focus on expertise variety including traffic management & operations, parks & recreation, environment & public health, active transportation**

MEMBERSHIP FOR CONSOLIDATED COMMITTEES

Programming Committees

- Current programming committees:
 - Kansas (KS STP = 31; ATPC = 12; TEC = 15)
Overlapping members = 20
 - Missouri (MO STP = 41; ATPC = 15; TEC = 20)
Overlapping members = 24
- Proposed KS & MO Programming Committee members
 - Kansas = 35 *
 - Missouri = 49 *



* Would also include non-voting FHWA & FTA partners.

KANSAS PROGRAMMING COMMITTEE MEMBERSHIP

Goal — Ensure broad jurisdictional and topical representation

Cities (5,000 or greater population)	20
Counties (1 from each MPO county)	4
Small Cities (less than 5k. 1 rotating seat per county)	4
KCATA	1
KDOT	1
Technical Advisory Committee	1
Others (bike/ped, transit, environment, freight, etc.) *	4
Total	35

*** Membership recruitment will focus on under-represented expertise variety (active transportation, parks & recreation, environment & public health, economic development)**

MISSOURI PROGRAMMING COMMITTEE MEMBERSHIP

Goal — Ensure broad jurisdictional and topical representation

Group A	Kansas City	6
	Independence	2
	Lee's Summit	2
	Blue Springs	2
	KCATA	1
	KC Streetcar	1
	MoDOT	1
	Technical Advisory Committee	1
Group B	Cities (5–50k population and county seats)	19
	Counties (1 from each MPO county)	5
	Small Cities (less than 5k. 1 rotating seat per county)	5
	Others (bike/ped, transit, environment, freight, etc.)	4
Total		49

Process-related recommendations

- Programming recommendations - require affirmative vote by entire committee **and each of** Group A and Group B
- No *formula* for distribution of funds to Group A or B is to be established.

DISCUSSION

- TTPC Member Concerns?
- Suggestions for improvement?
- Other issues to consider?

Item #7

REPORT: Climate Action Plan Update

Presenter: Karen Clawson, MARC



Regional CLIMATE ACTION PLAN

-- UPDATE IN PROGRESS --

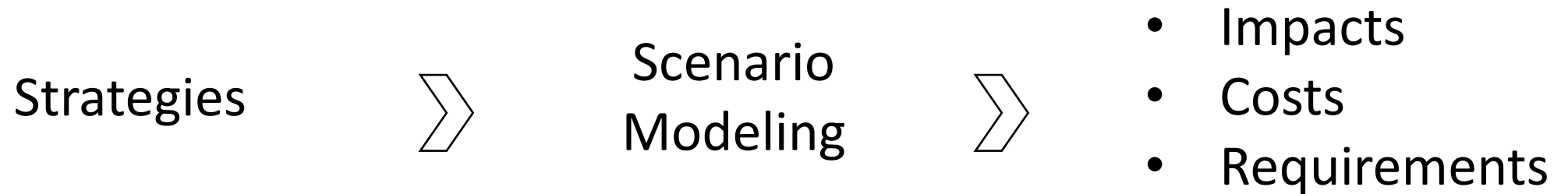
kcmetroclimateplan.org



NET ZERO
REGION
BY 2050



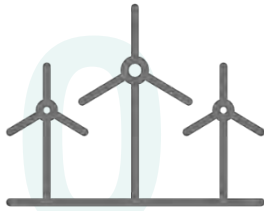
Climate Planning Scenario Modeling



- The final scenario represents *one* possible path forward to meet our region's adopted net zero target.
- It helps us understand the most effective way to optimize community benefits while also reducing emissions.

Climate Action Plan

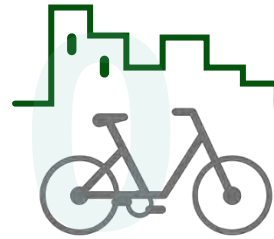
Action Areas



Energy



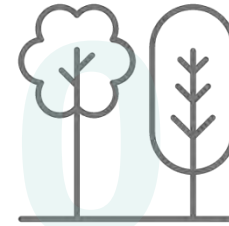
Buildings



Transportation
& Land Use



Food
& Agriculture



Urban
Greening



Circular Economy
& Waste



Industry



Collaboration
& Leadership

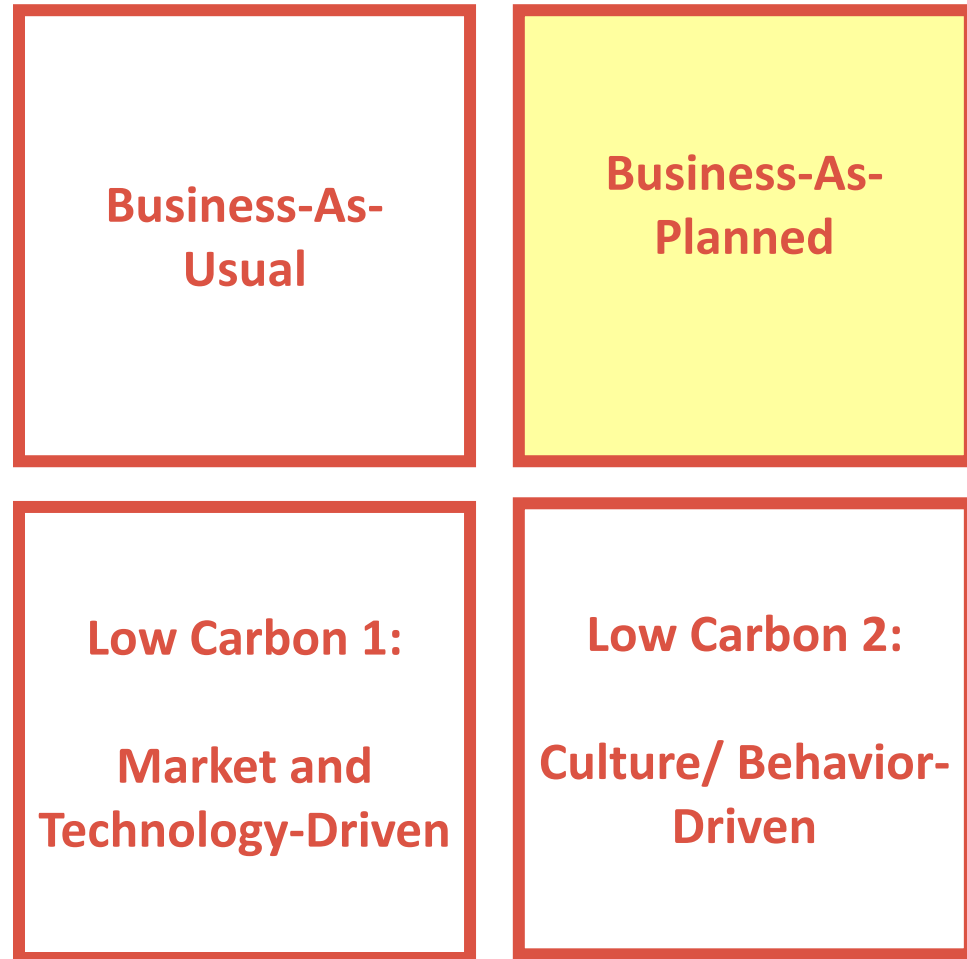


Innovation
& Finance



Community
Resilience

Climate Planning Scenario Modeling



- BAP assumptions:
 - Evergy's clean energy target: 70% redux by 2030, net zero by 2045.
 - One new data center in each county (doubling of energy demand)
- **Transportation**
 - Assumes 20% bus fleet electrification
 - Electric vehicle registration rate continues
 - Fuel economy and ghg standards for vehicles

Climate Planning Scenario Modeling

Low Carbon 1:

**Market and
Technology-Driven**

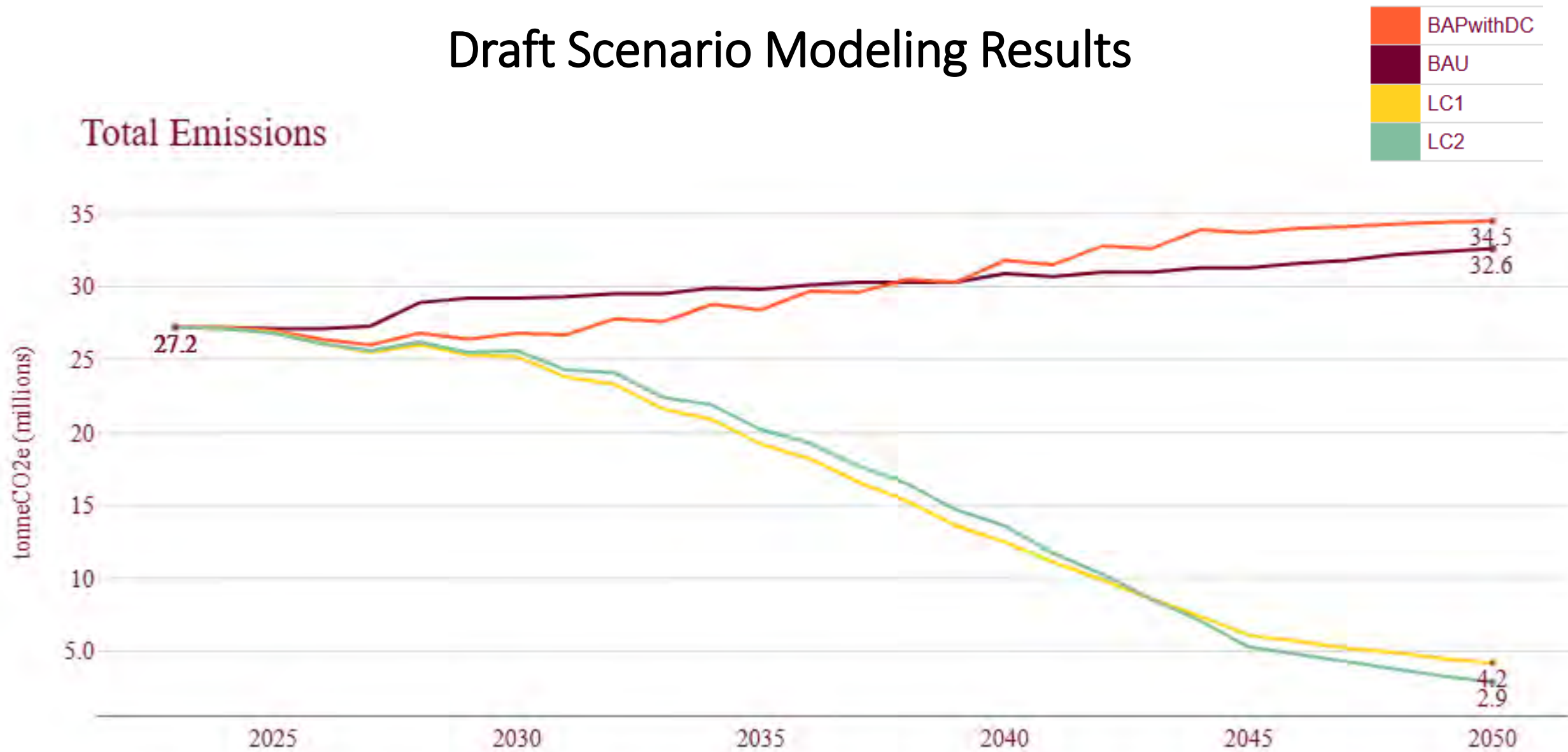
20% reduced “driving alone” trips
80% electric vehicles (personal)
70% electric fleet vehicles (commercial)
Fuel economy and ghg standards

Low Carbon 2:

**Culture/ Behavior-
Driven**

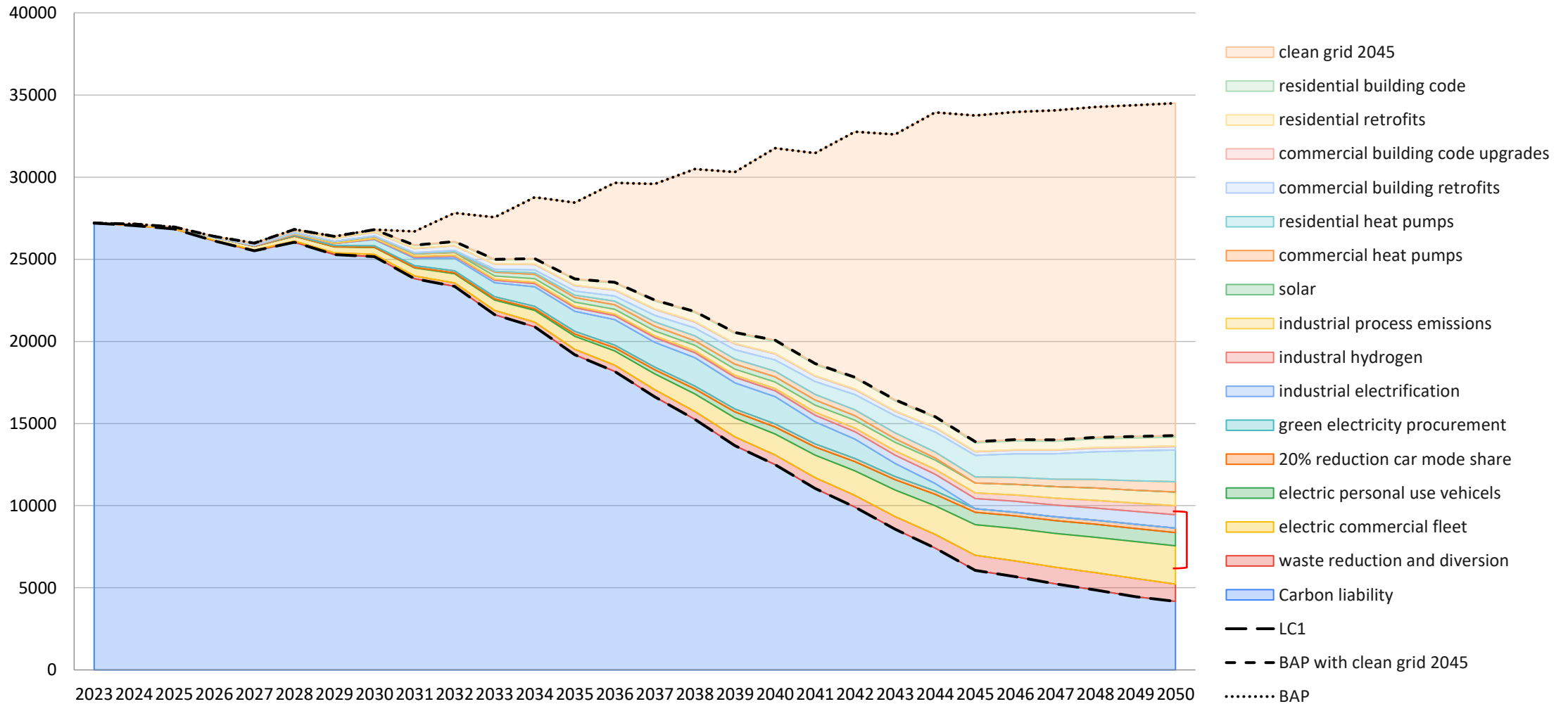
20% reduced “driving alone” trips
100% electric vehicles (personal)
70% electric fleet vehicles (commercial)
Fuel economy and ghg standards

Draft Scenario Modeling Results



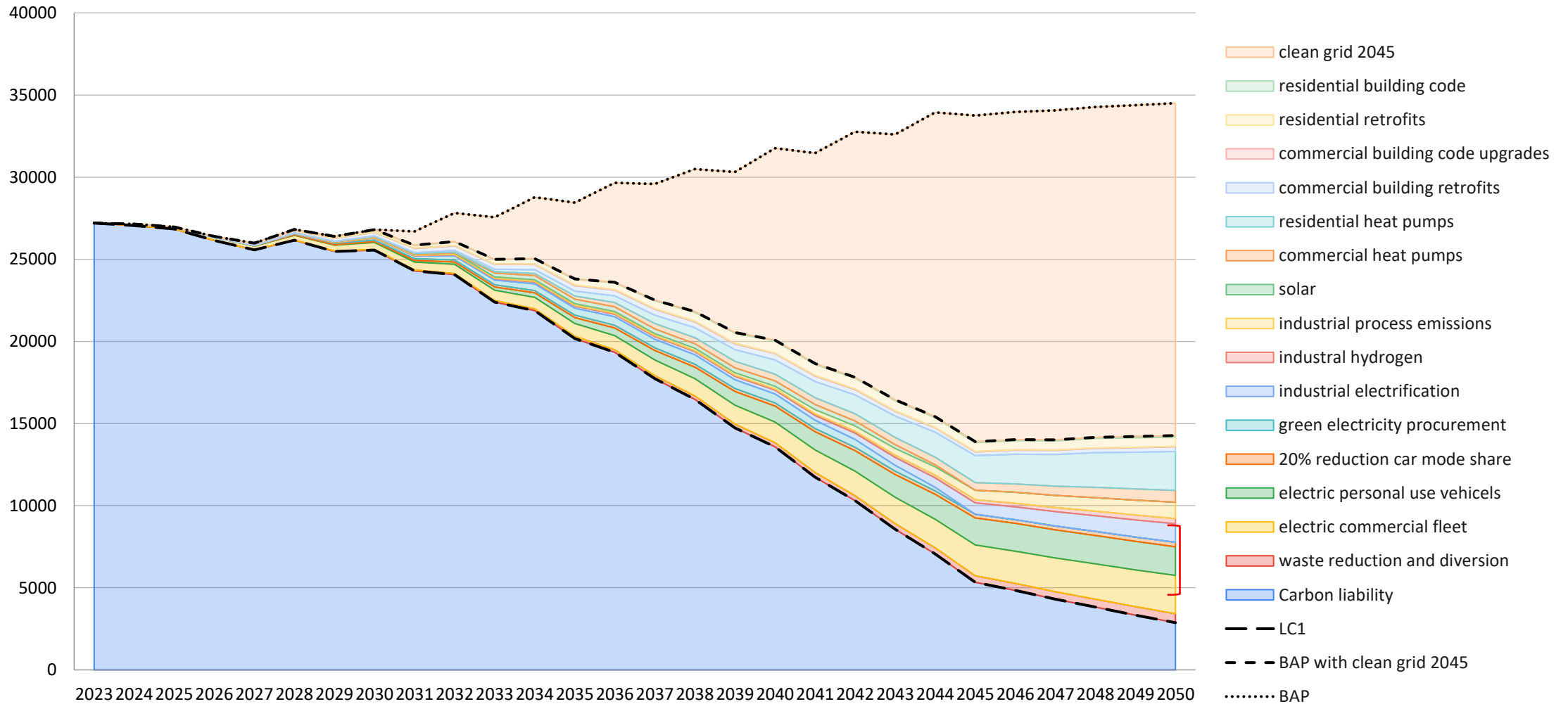
Draft Scenario Modeling Results – by strategy

LC1 wedges (kt CO₂e/year)

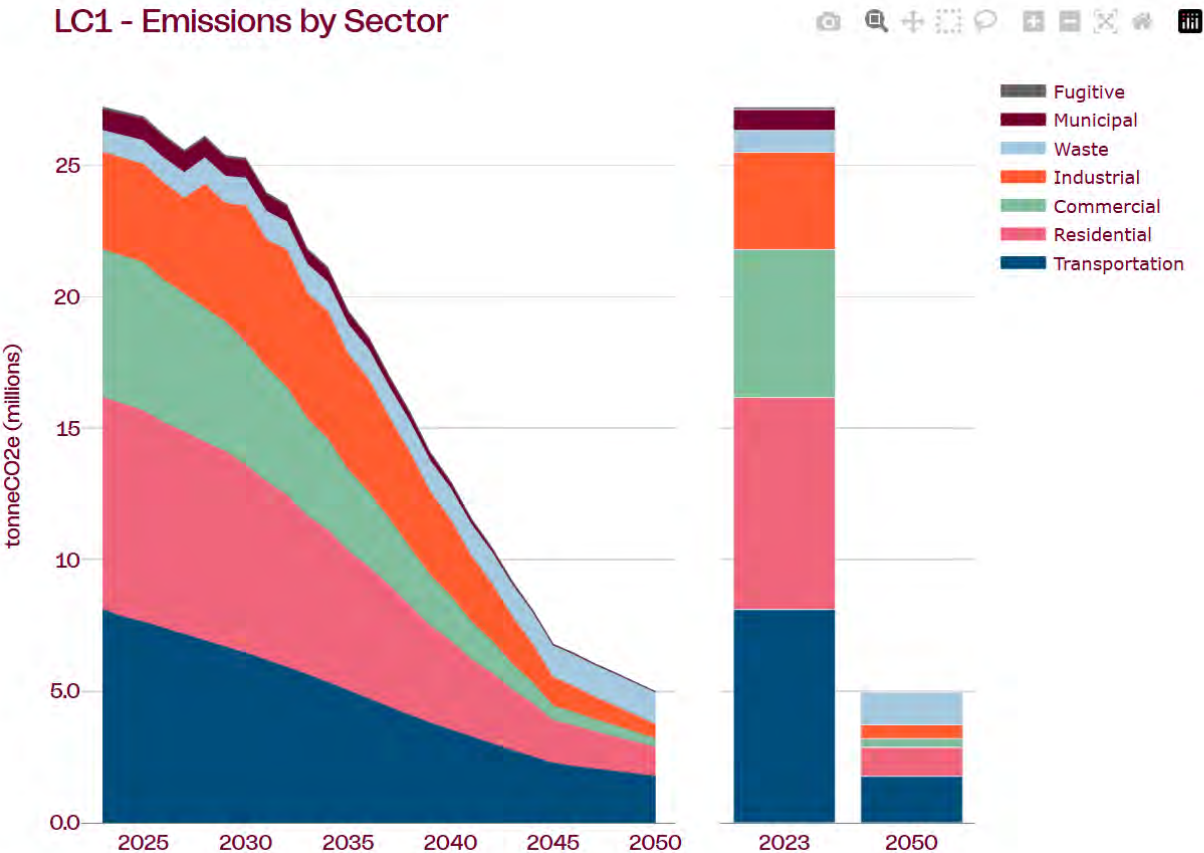


Draft Scenario Modeling Results - by strategy

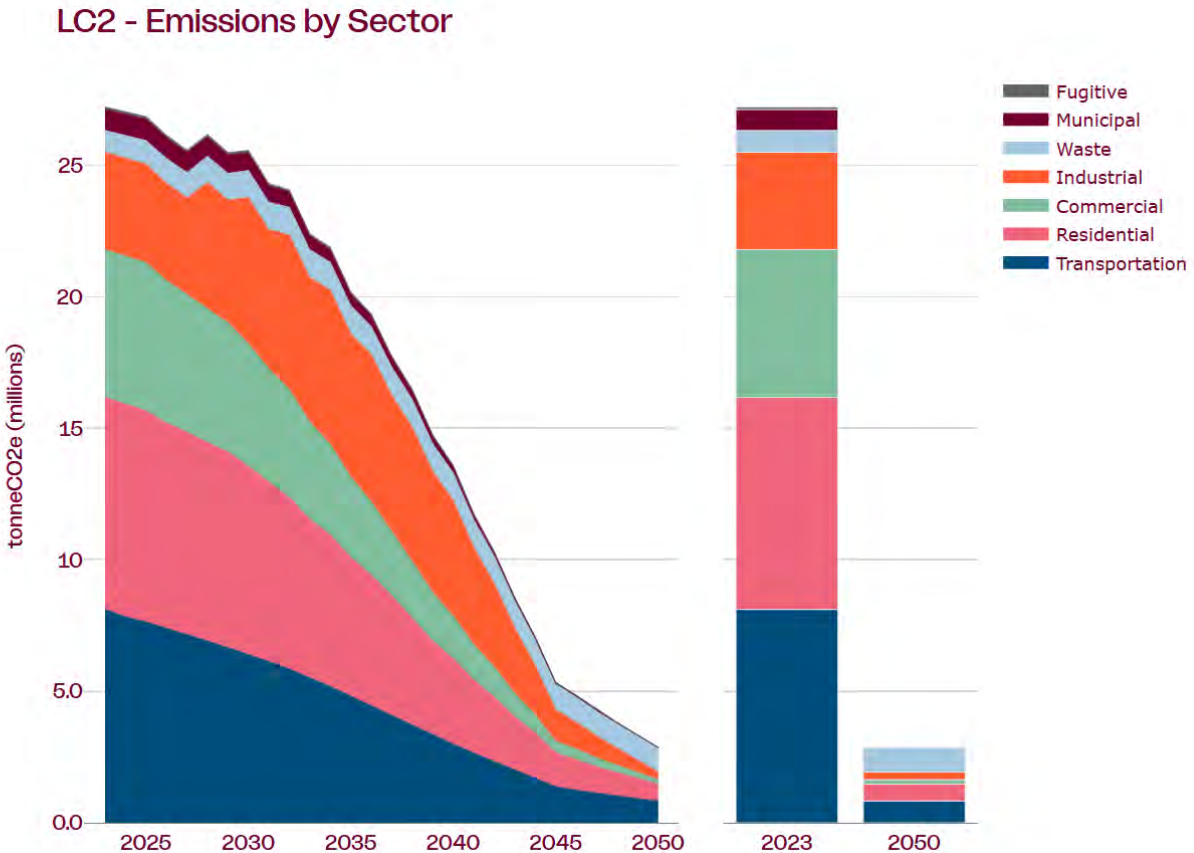
LC2 wedges (kt CO₂e/year)



Draft Scenario Modeling Results – by sector



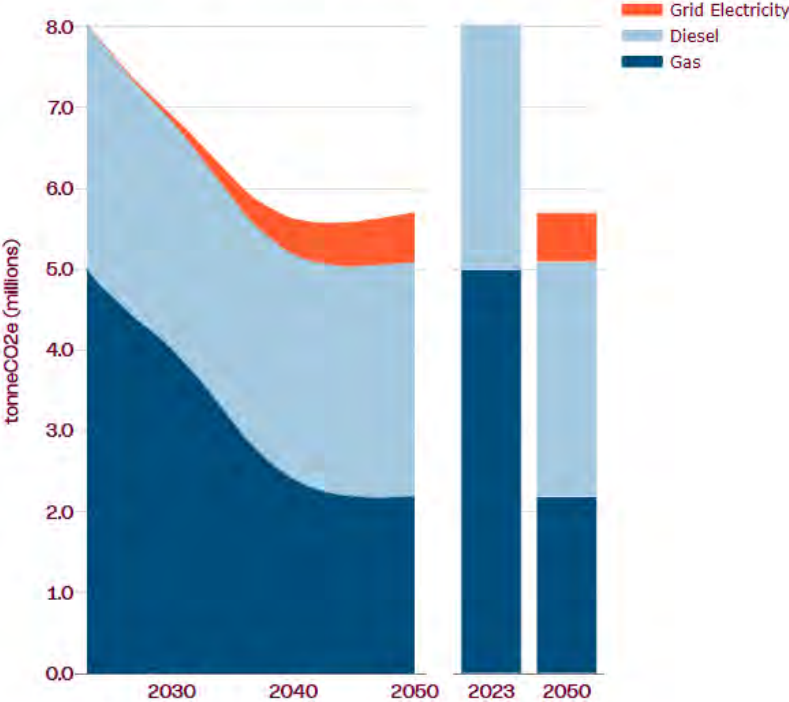
Transportation emissions: **-78.2%**
2023: **8.1** MMTCO₂e
2050: **1.8** MMTCO₂e (carbon liability)



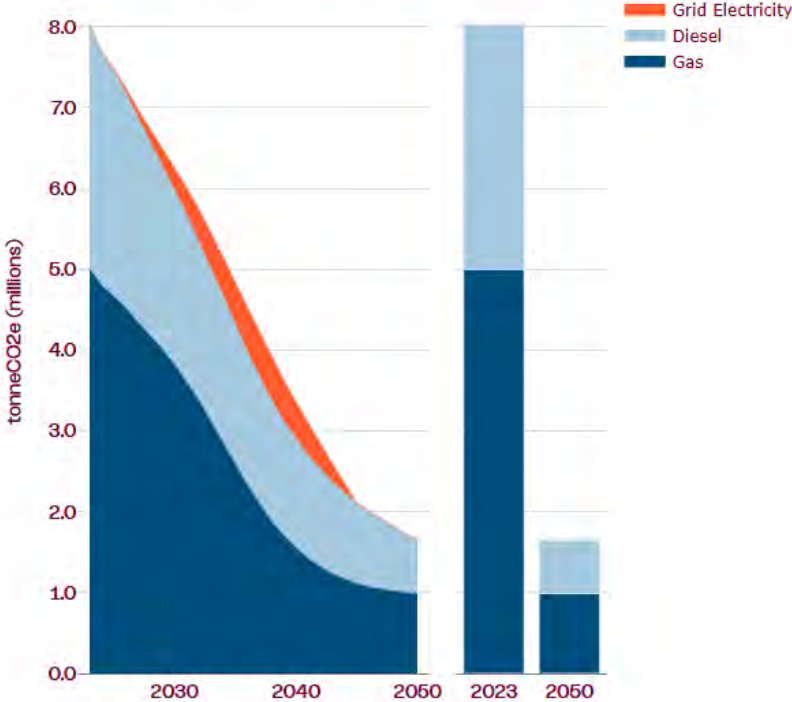
Transportation emissions: **-89.8%**
2023: **8.1** MMTCO₂e
2050: **.83** MMTCO₂e (carbon liability)

Transportation Emissions by Fuel Type

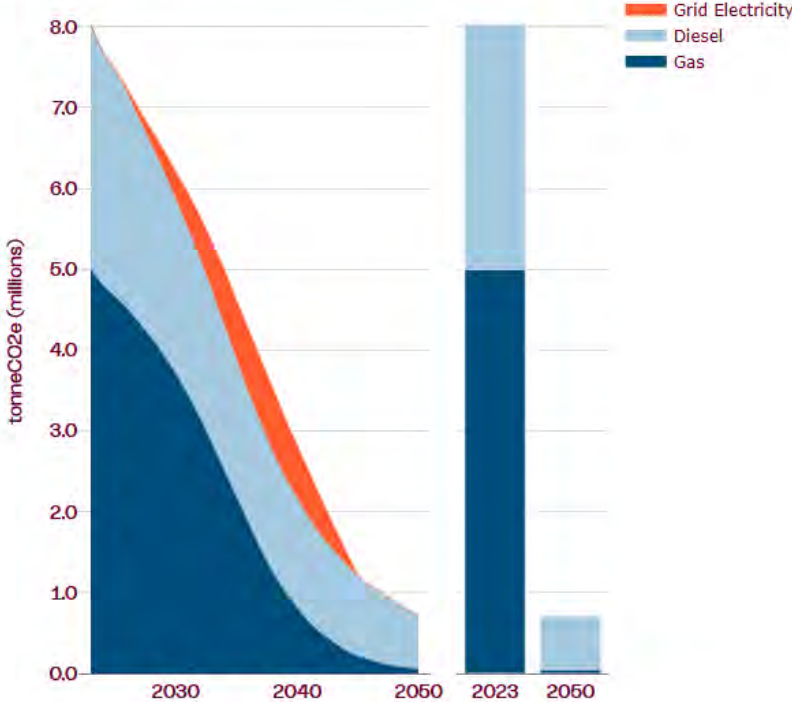
BAPwithDC - Transportation Emissions by Fuel Type



LC1 - Transportation Emissions by Fuel Type



LC2 - Transportation Emissions by Fuel Type



Observations:

- 1) Clean energy grid takes the biggest bite out of our total emissions, as expected.
- 2) Data centers and advanced technology driving up energy demand - easily expected to double compared to 2023.
- 3) Delays in cleaning the grid:
 - Increase the importance of energy efficiency measures
 - Decrease the effectiveness of electrifying homes, vehicles and processes
- 4) Diesel emissions still present in the transportation sector due to slower transition to zero-emission alternative fuel.

Recommendations for Final Scenario

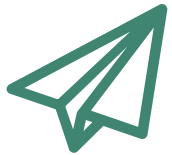
Building on “Culture/Behavior Shift Scenario” (LC2):

- 1) Increase mode split to 34% to match MTP modeling
- 2) Increase data center green electricity.
- 3) Consider technological advancements in converting waste to energy that captures emissions and provides renewable gas offset.
- 4) Incorporate sequestration measures (regenerative agriculture, trees, and native landscapes).



Regional CLIMATE ACTION PLAN

-- UPDATE IN PROGRESS --



Karen Clawson
kclawson@marc.org

kcmetroclimateplan.org



NET ZERO
REGION
BY 2050



Item #8

REPORT: Green Commute Challenge and Walktober

Presenter: Karen Clawson, MARC



WAY TO GO

Green Commute Challenge

October 1-31, 2025

Our Vision



We envision a region where sustainable transportation options are the best way to connect people to places.

Sustainable transportation options are affordable, accessible, build community health and support economic opportunity.

WAY TO GO

Green Commute Challenge

October 1-31, 2025

Log your green commute trips on the WAY TO GO app to win prizes. Points can be earned for:

- Carpooling
- Biking
- Walking
- Scooting
- Taking the Bus
- Riding the Streetcar



2024 Organizations

Commuters from more than 70 employers and universities participated this year.

4k Hauling LLC
Adient
AECOM
All Services Home Health
All Weather Control
Amazon
BikeWalkKC
BioLifeCascade Hotel
CBIZ
Cerner Corporation
City of Kansas City, MO
City of Mission, KS
City of Overland Park, KS
Commerce Bank
Cook Flatt & Strobel Engineers
Dake Wells Architecture
Diamon Merckens Hogan
Dwight D. Eisenhower VA Medical
Center
Eurofins
FORVIS LLP
Garmin
HDR Inc.

HNTB
HOK International
Homebase.ai
Hydrogeologic
infegy
Johnson County Community College
Johnson County Government
Johnson County Library
Kansas City Art Institute
Kansas City Public Library
Kansas City Zoo & Aquarium
Kansas City, Kansas Public Library
KCI Airport
Kearney R-1 School District
KinderCare Learning Centers
Linda Hall Library
LTD Signs and Graphics
Marriott
Mega Wash
Metro Lutheran Ministry
Mid-America Regional Council
Missouri Department of Conservation

MoDOT
Netsmart Technologies Overland Park
Regional Medical Center
Ozark National Life
SFS Architecture
Shook, Hardy & Bacon LLP
Signal Theory
SS&C
St. Teresa's Academy
Sumner Academy of Arts and Science
TranSystems
UMB Bank
UMKC – Center for Neighborhoods
Unified Government of Wyandotte
County and Kansas City, KS
University of Kansas
University of Kansas Cancer Center
University of Kansas Medical Center
University of Missouri-Kansas City
VA EASTERN KANSAS HEALTHCARE SYSTEM
WeWork
WSP



2024 STATS



263 participants **logged** 7,066 green commute trips!



\$6,000 in gas savings



7.8 tons of carbon emissions saved
(About double what the average American household emits annually from home energy usage)

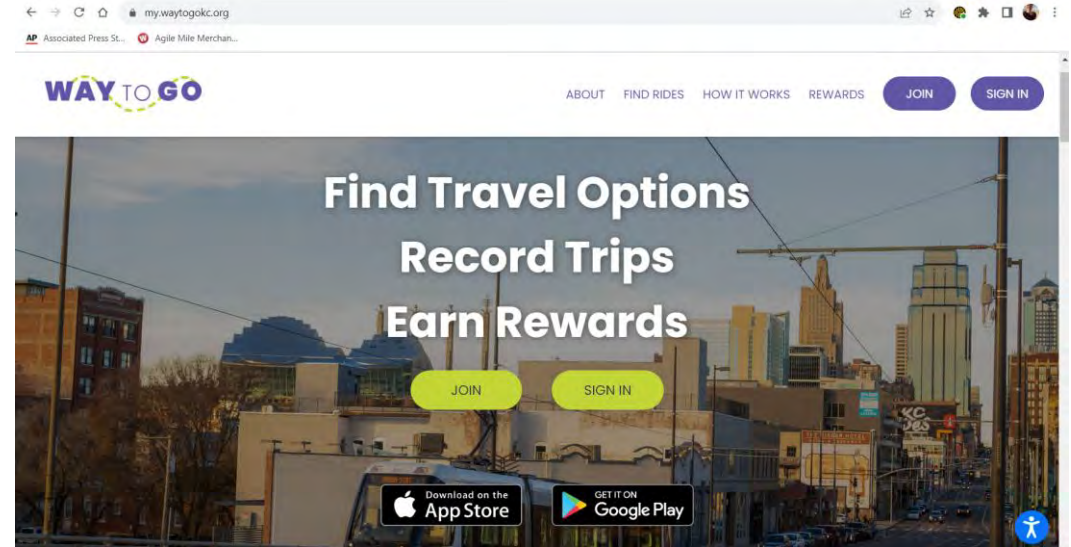


52,015 miles that could've been traveled in a single-occupancy vehicle



To Join the Challenge

- Create an account at my.waytogokc.org or the WAY TO GO iOS or Android app
- Complete your commuter profile, making sure your employer is filled in under 'Organization.'
- You'll automatically be added to your employer's team.
- Log your trips in October!

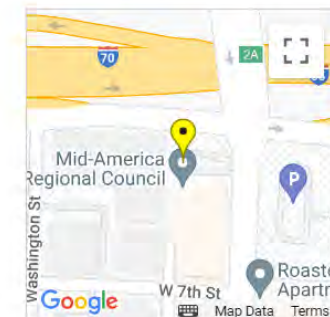


ORGANIZATION (your work or school)

Org. name:

Org. website: [View](#)

Org. address:



Prizes

Individual Prizes

Grand Prize

First place: Electra E-bike

Second place: Backpack and
Shokz headphones



Team Prizes

Team Challenge

First place: \$300

Second place: \$150

Local Government Challenge

First place: \$300 to donate to a
charity of their choice



waytogokc.org

Karen Clawson
Air Quality & Mobility
Program Manager
kclawson@marc.org



Win a gift card from Urban Hikes KC!



WALKS



marc.org/walk

Keep your mind and body healthy.

Item #9

Other Business

Item #10

Adjournment

Next meeting: Tuesday, October 21, 2025
