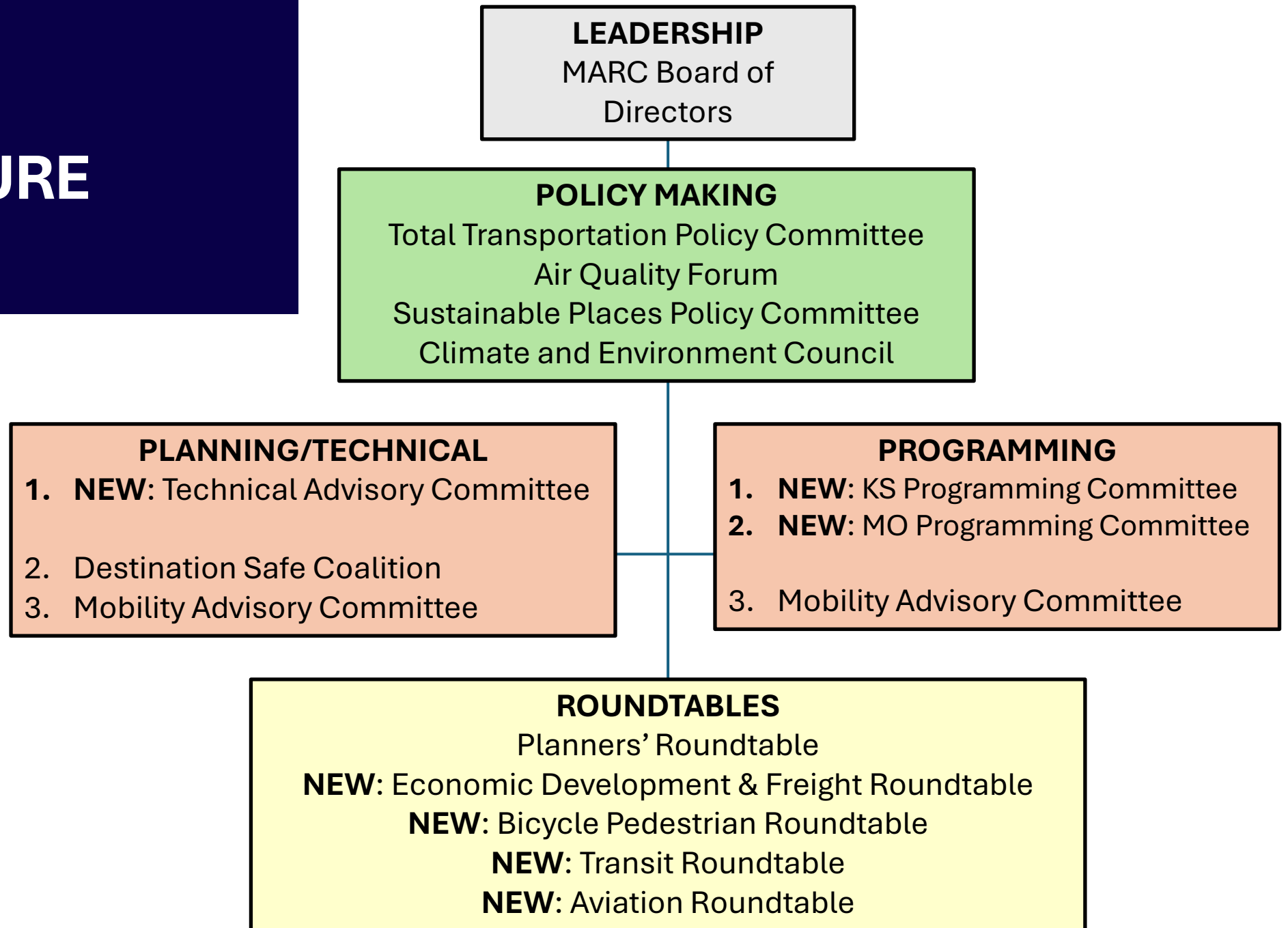


Item No. 4a

BRIEF REPORTS

- a.) REPORT: Review and approval of proposal for a new Missouri transportation programming committee.

NEW STRUCTURE



Missouri Programming Committee

Organization / Membership Category	# of Votes
Kansas City	6
Independence	2
Lee's Summit	2
Blue Springs	2
KCATA	1
KC Streetcar	1
MoDOT	1
Technical Advisory Committee (TAC)	1
Cities with populations 5–50k and county seats	19
Counties (1 per county)	5
Municipalities under 5,000 population (one seat by county)	5
Others (bike/ped, transit, environment, freight, etc.)*	4
Total	49

- * Membership recruitment for these seats will focus on specialized expertise such as active transportation, parks & recreation, environment & public health, freight, economic development, etc.

Missouri Programming Committee

- Dispute resolution process recommendations:
 - In the event that any six or more voting members submit a written appeal disputing a recommended programming scenario, TTPC cochairs will establish an ad hoc work group to evaluate and recommend a resolution.
 - Programming recommendations returned for revision to the MPC by the work group's recommendations will require a majority vote by both:
 - **Group A** (*KCMO, Independence, Lee's Summit, Blue Springs, KCATA, KC Streetcar, MoDOT and TAC*),
 - and **Group B** (*all other jurisdictions & voting members*)...before being submitted to TTPC.