

UPDATED STORMWATER DESIGN CRITERIA SECTION 5600/BMP MANUAL

For the Kansas City Metro Region



WHY DOES THIS MATTER?



Reduces flood damage



Supports development



Improves efficiency



Saves money

PROJECT PARTNERS

Blue Springs

Bonner Springs

De Soto

Excelsior Springs

Fairway

Gardner

Gladstone

Grandview

Independence

Johnson County

Kansas City

Lawrence

Leawood

Lenexa

Liberty

Merriam

Miami County

Mission Hills

Mission

North Kansas City

Olathe

Osawatomie

Overland Park

Parkville

Prairie Village

Riverside

Roeland Park

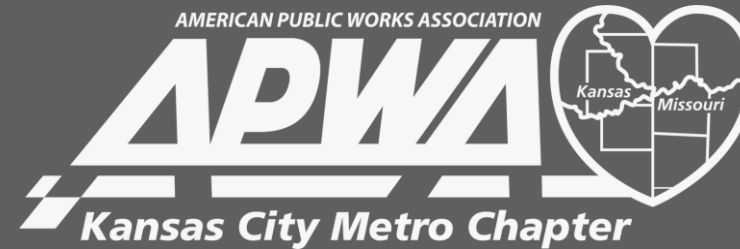
Shawnee

Spring Hill

Unified Government of Wyandotte County

Westwood Hills

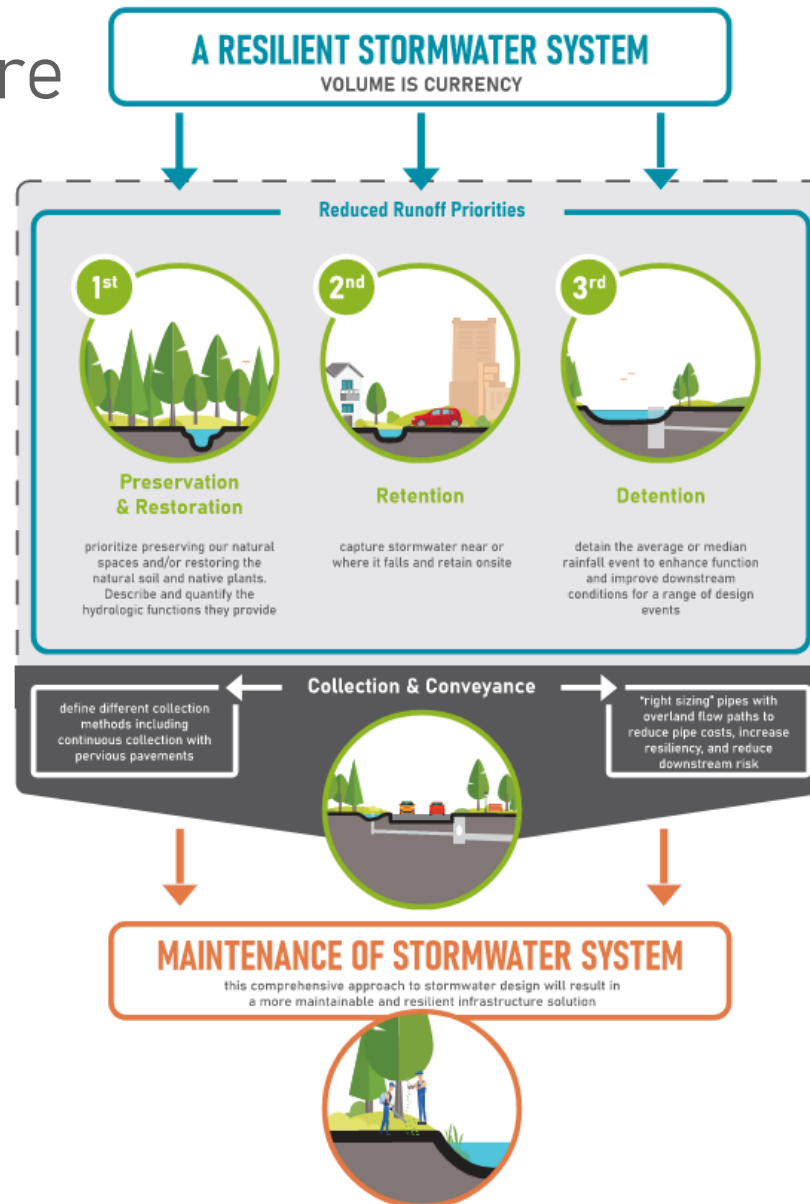
Westwood



PRIORITIES OF STORMWATER MANAGEMENT – A LAYERED APPROACH

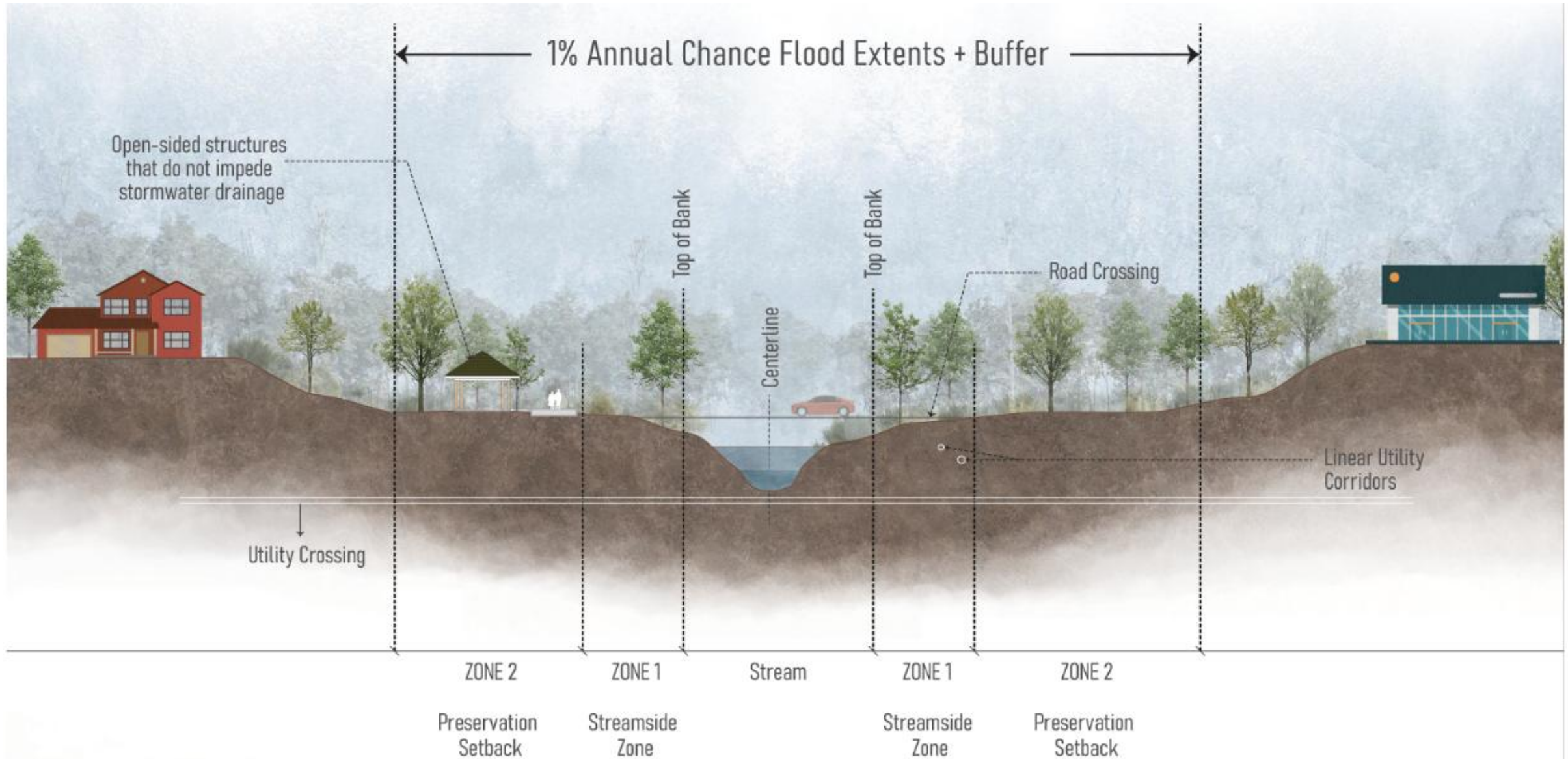
1. Preserve/Restore
2. Retain
3. Detain

+ Collection
+ Conveyance
+ Maintenance

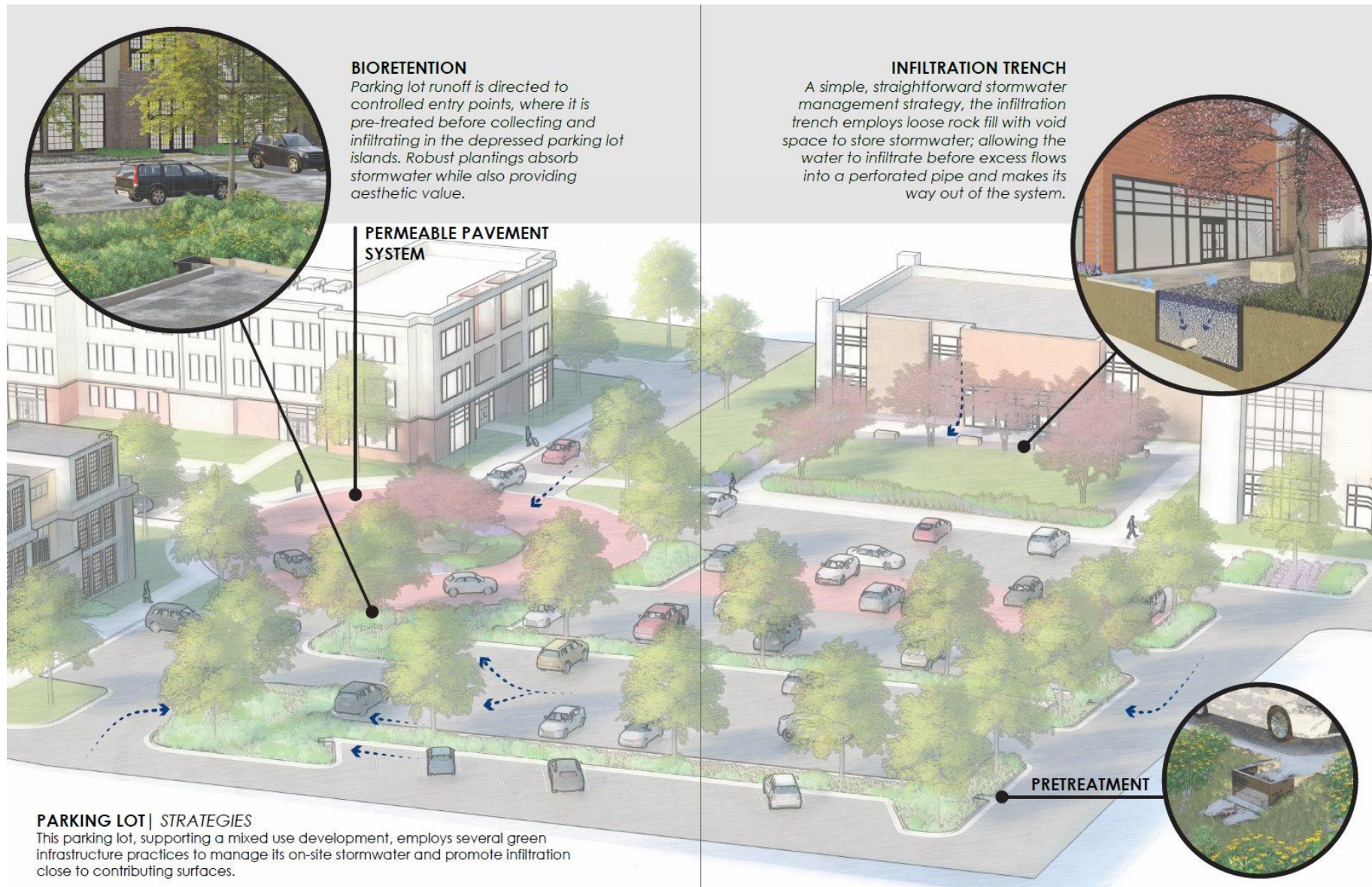


STREAM SETBACKS PERFORMANCE

5604.1



BETTER GUIDANCE FOR DEVELOPMENT



PLANNING FOR OPERATIONS & MAINTENANCE

5609.1

Table 5609-1: Storm Drainage System Typical Maintenance Tasks & Frequencies

Maintenance Tasks	Preservation/ Restoration of Natural Areas	Retention & Detention Practices	Collection Practices	Conveyance Practices
Inspect for Standing Water	N/A	Monthly	Monthly	Monthly
Inspect Structural Conditions	N/A	Monthly	Monthly	Monthly
Inspect Health & Appearance of Vegetation	Monthly	Monthly	N/A	N/A
Trash & Debris Removal	Monthly	Bi-Weekly	Monthly	Monthly
Sediment Removal	Monthly	Bi-Weekly	Semi-Annually	Semi-Annually
Clear Stormwater Flow Paths	Monthly	Monthly	Monthly	Monthly
Repair Erosion & Material Settlement	As-Needed	As-Needed	As-Needed	As-Needed
Pest & Disease Control	Monthly	Monthly	N/A	N/A
Prune Plants	N/A	As-Needed	N/A	N/A
Remove & Replace Dead Plants	As-Needed	As-Needed	N/A	N/A
Invasive Species and Weed Removal	Monthly	Monthly	N/A	N/A
Maintain Turf Grass Lawn	N/A	Weekly	N/A	Weekly
Refresh Mulch Areas	N/A	Semi-Annually	N/A	N/A

+ Submittals will:

- › List designed system components and associated maintenance.
- › Define responsible entities from construction to ownership.
- › Include maintenance manual with deed/plat.

MANUAL ADOPTION PROCESS

- + APWA membership approval enables adoption by regional governments.
- + Cities review and voluntarily adopt standards into ordinance.
- + MARC will host regional trainings.

View & download the Manual at [marc.org](https://www.marc.org)

› Share project page with staff and network



[https://www.marc.org/
environment/environment-
plans/stormwater-best-
management-practices](https://www.marc.org/environment/environment-plans/stormwater-best-management-practices)